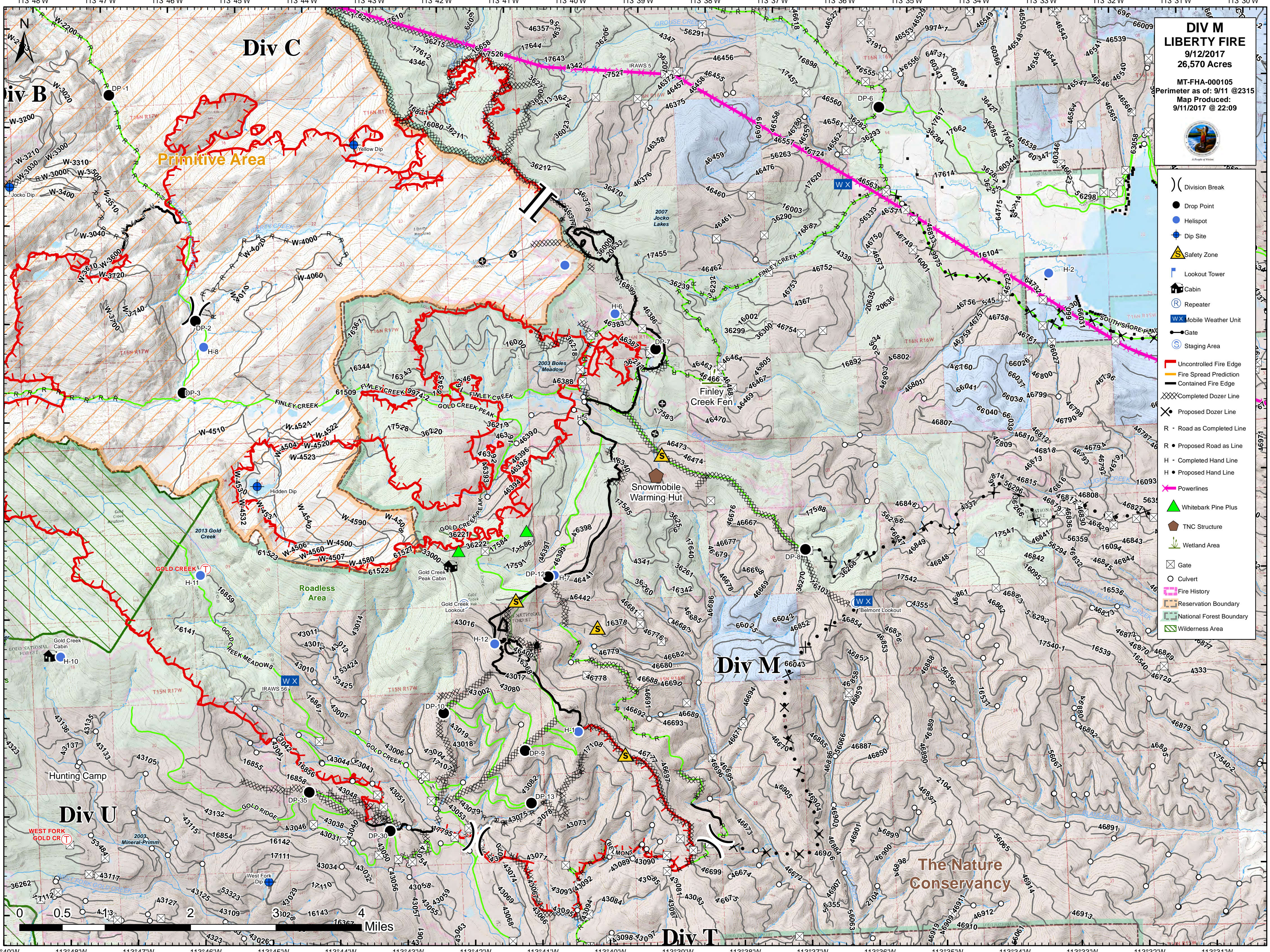


**DIV M**  
**LIBERTY FIRE**  
9/12/2017  
26,570 Acres

MT-FHA-000105  
Perimeter as of: 9/11 @ 2315  
Map Produced:  
9/11/2017 @ 22:09



- ( ) Division Break
- Drop Point
- Helispot
- Dip Site
- ▲ Safety Zone
- Lookout Tower
- Cabin
- Repeater
- WX Mobile Weather Unit
- Gate
- Staging Area
- Uncontrolled Fire Edge
- Fire Spread Prediction
- Contained Fire Edge
- XXX Completed Dozer Line
- × Proposed Dozer Line
- R - Road as Completed Line
- R • Proposed Road as Line
- H - Completed Hand Line
- H • Proposed Hand Line
- Powerlines
- ▲ Whitebark Pine Plus
- TNC Structure
- Wetland Area
- Gate
- Culvert
- Fire History
- Reservation Boundary
- National Forest Boundary
- Wilderness Area



Map labels include: Div C, Div B, Div M, Div U, Div T, Primitive Area, Roadless Area, The Nature Conservancy, Gold Creek Meadows, Snowmobile Warming Hut, Hunting Camp, West Fork Gold Cr, Jocko Dip, Yellow Dip, Hidden Dip, Gold Creek Peak Cabin, Belmont Lookout, and various road names like W-3200, W-3310, W-3400, W-3510, W-3610, W-3720, W-3830, W-3940, W-4050, W-4160, W-4270, W-4380, W-4490, W-4600, W-4710, W-4820, W-4930, W-5040, W-5150, W-5260, W-5370, W-5480, W-5590, W-5700, W-5810, W-5920, W-6030, W-6140, W-6250, W-6360, W-6470, W-6580, W-6690, W-6800, W-6910, W-7020, W-7130, W-7240, W-7350, W-7460, W-7570, W-7680, W-7790, W-7900, W-8010, W-8120, W-8230, W-8340, W-8450, W-8560, W-8670, W-8780, W-8890, W-9000, W-9110, W-9220, W-9330, W-9440, W-9550, W-9660, W-9770, W-9880, W-9990.