

LIBERTY & BLACK FIRE

MT-FHA-000105 & 125

Public Information Map

27,034 & 1,427 Acres

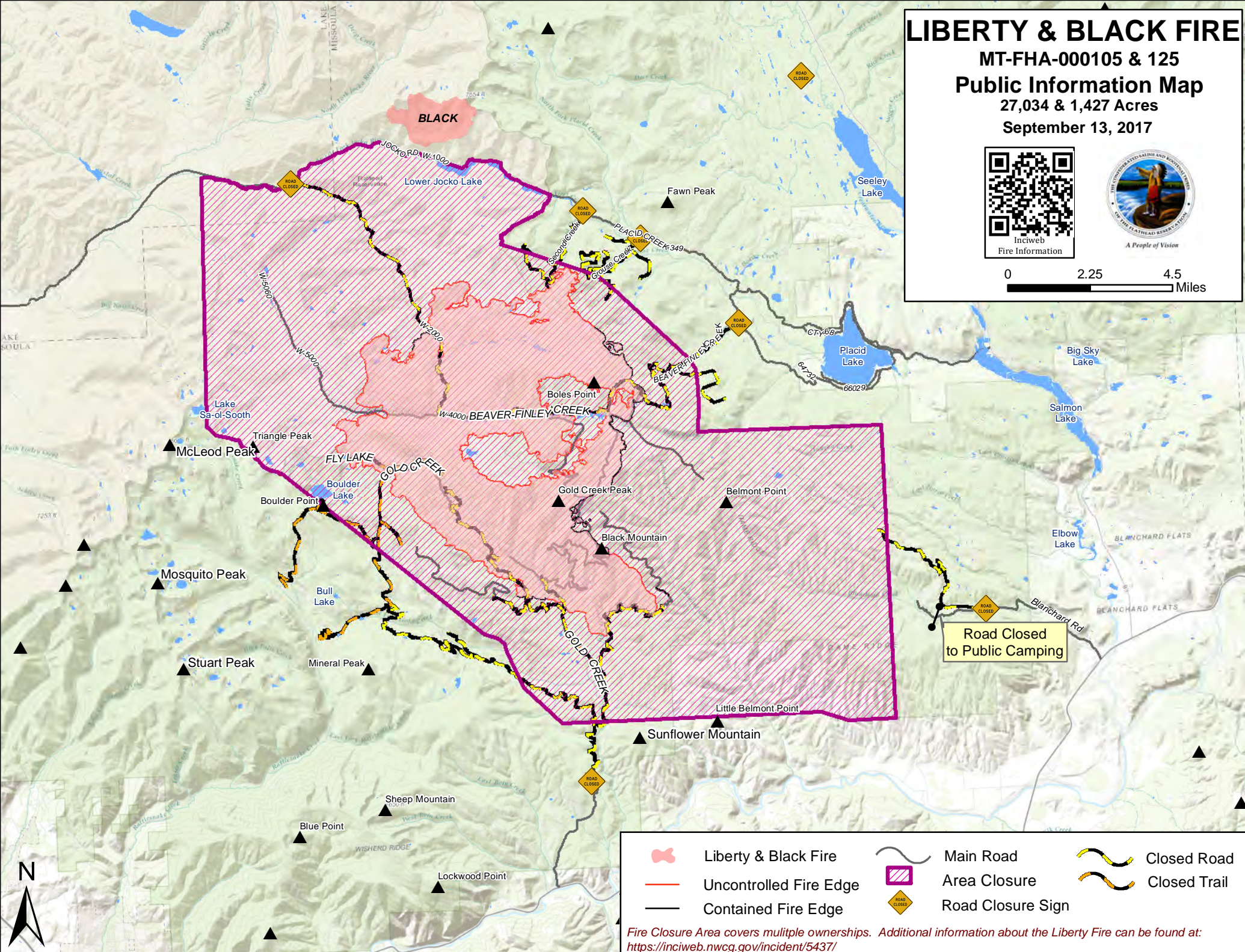
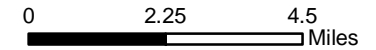
September 13, 2017



Inciweb
Fire Information



A People of Vision



Road Closed
to Public Camping



- | | | | | | |
|--|------------------------|--|-------------------|--|--------------|
| | Liberty & Black Fire | | Main Road | | Closed Road |
| | Uncontrolled Fire Edge | | Area Closure | | Closed Trail |
| | Contained Fire Edge | | Road Closure Sign | | |

Fire Closure Area covers multiple ownerships. Additional information about the Liberty Fire can be found at: <https://inciweb.nwcg.gov/incident/5437/>