










Legend

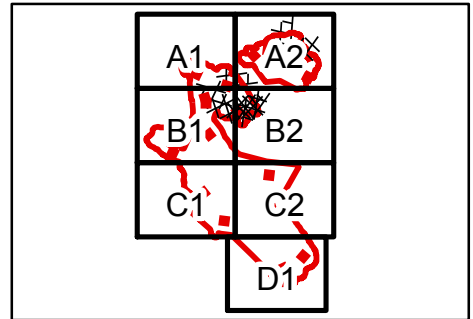
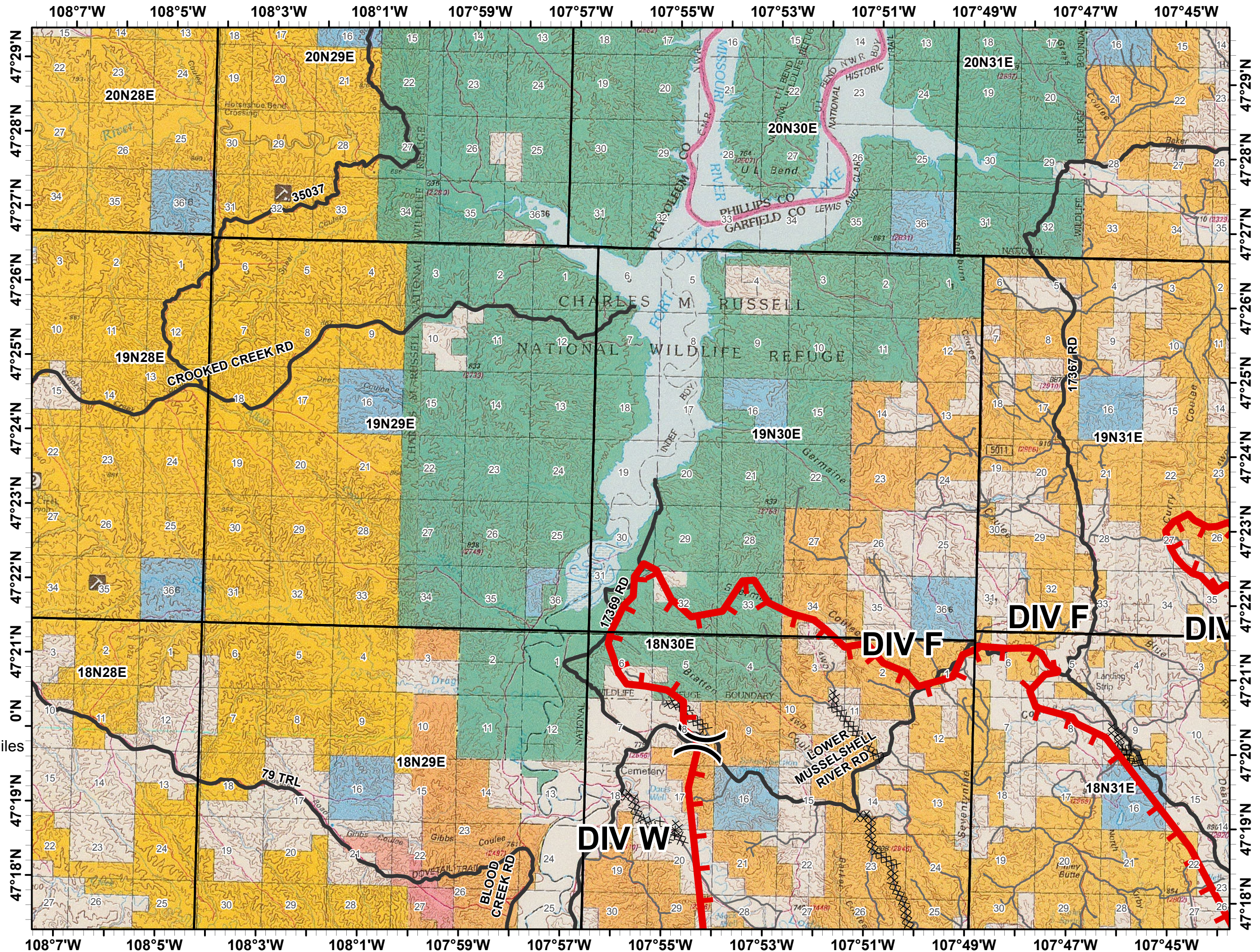
-  Air/Grnd Break
-  County Lines
-  Roads
-  Hwy 200
-  Primitive Roads

Owner



-  Private
-  MT State
-  BLM
-  FWS

 Division
 Drop Point
 Incident Command Post
 Uncontrolled Fire Edge
 Completed Dozer Line












Legend

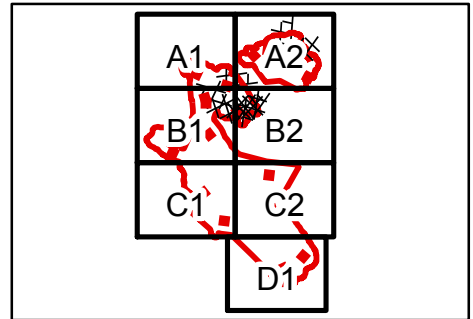
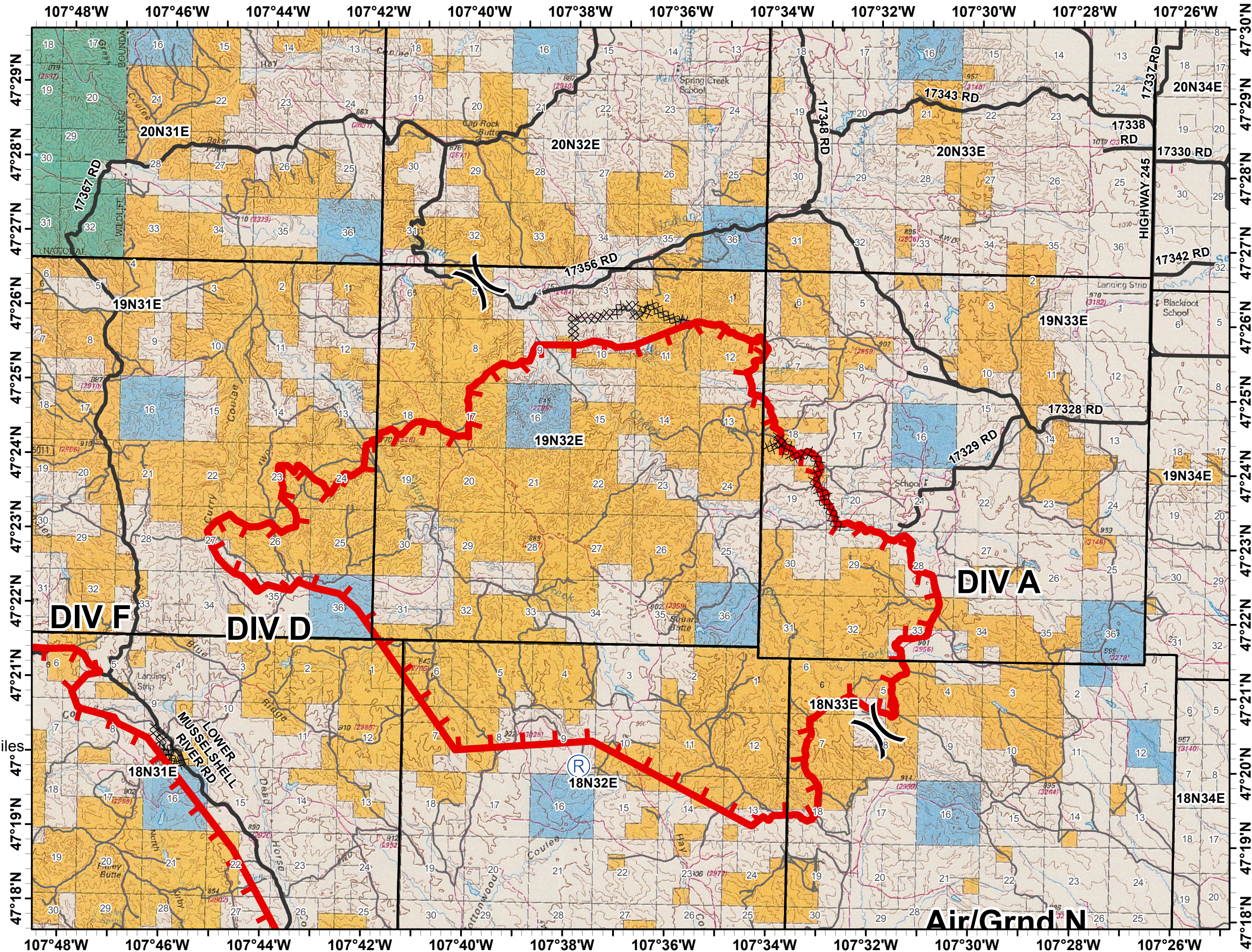
-  Air/Grnd Break
-  County Lines
-  Roads
-  Hwy 200
-  Primitive Roads

Owner

-  Private
-  MT State
-  BLM
-  FWS

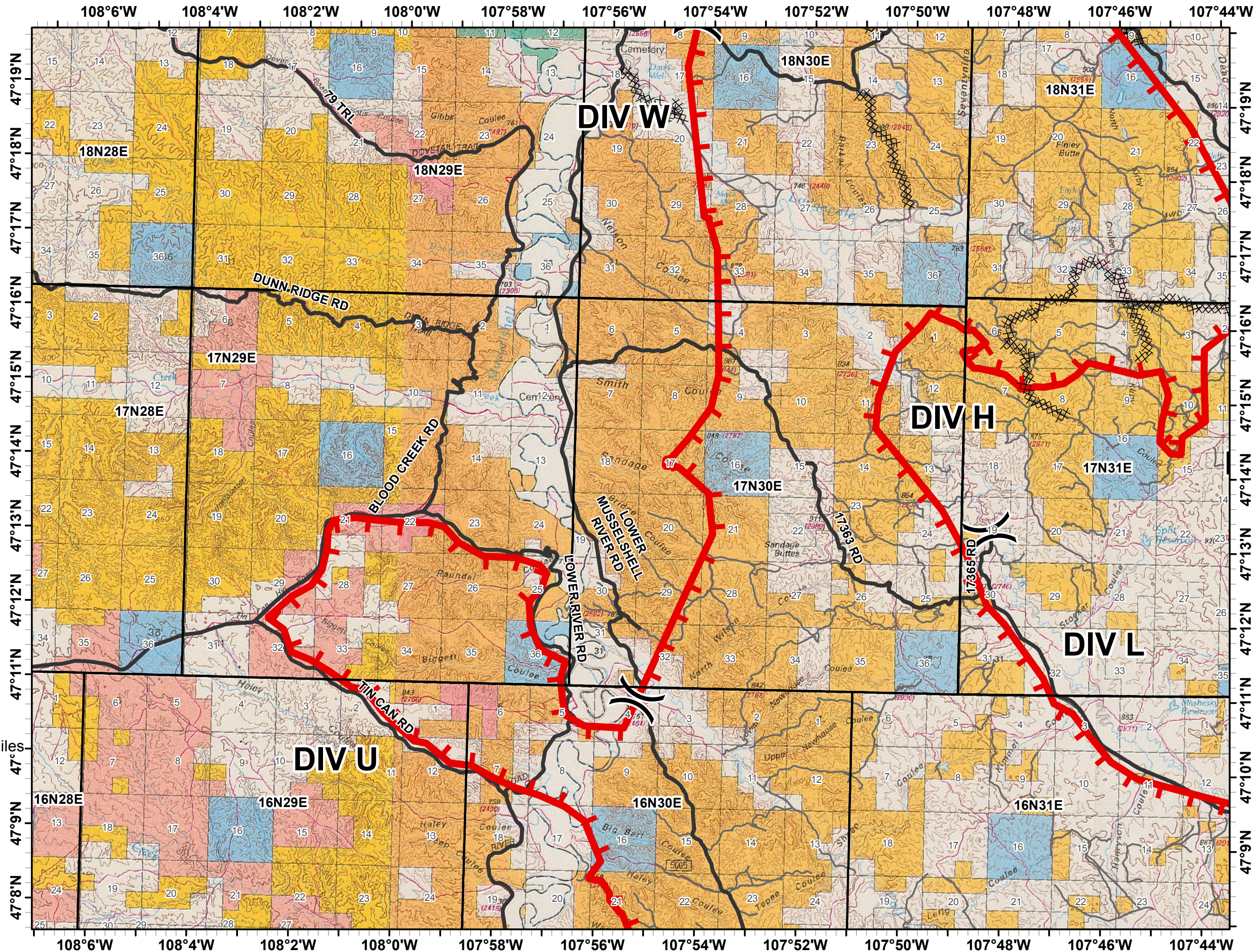
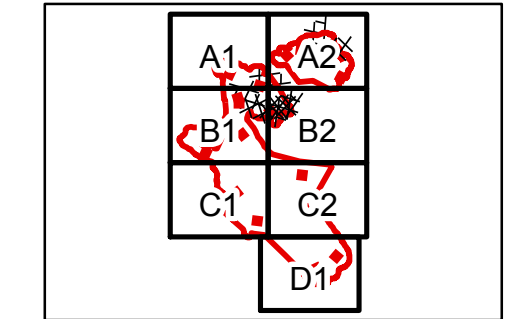
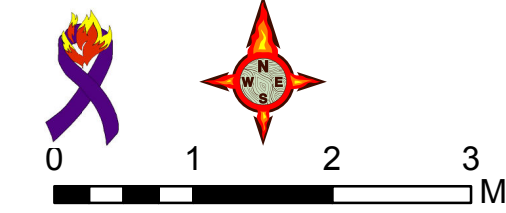
-  Division
-  Drop Point
-  Incident Command Post
-  Uncontrolled Fire Edge
-  Completed Dozer Line


 0 1 2 3 Miles

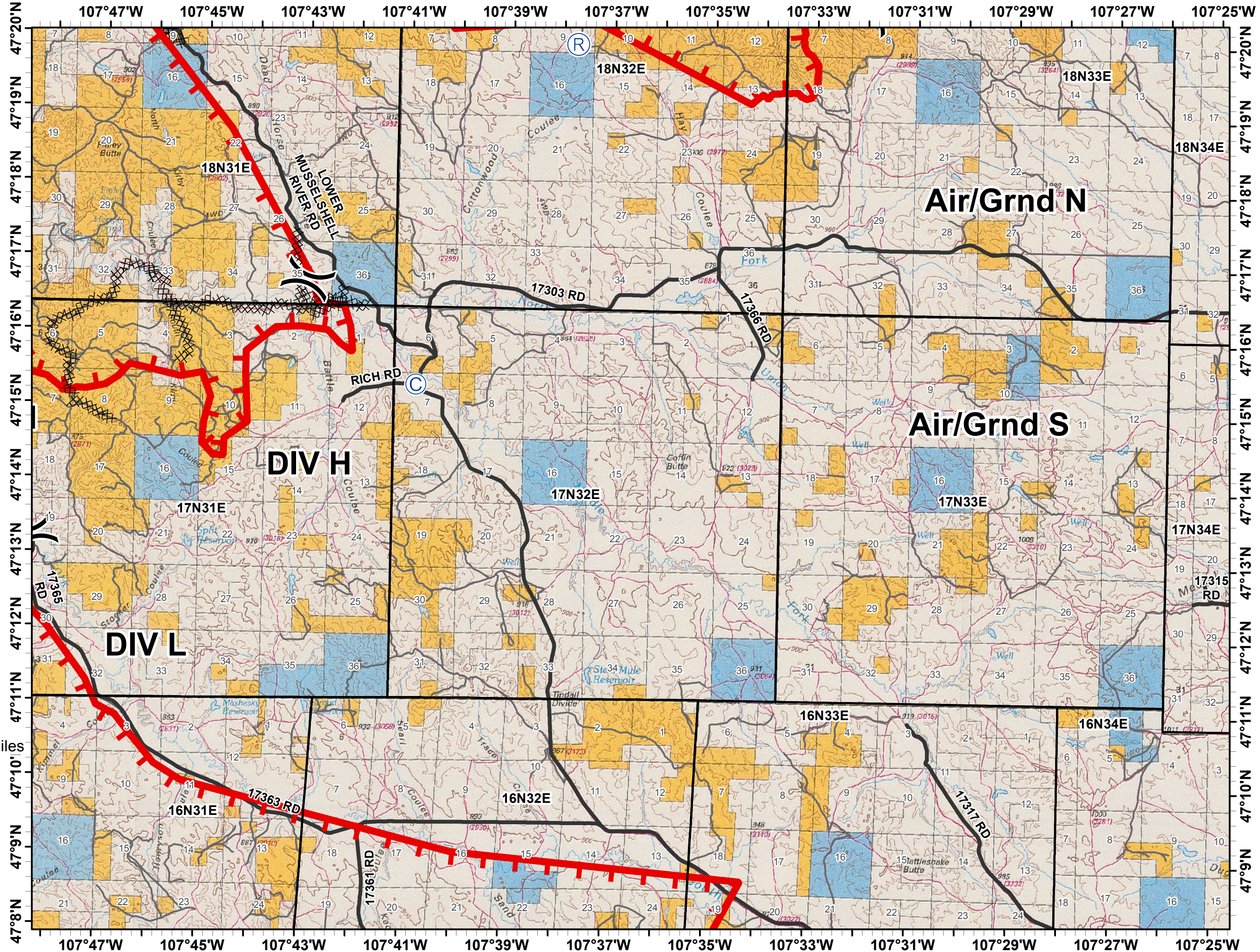
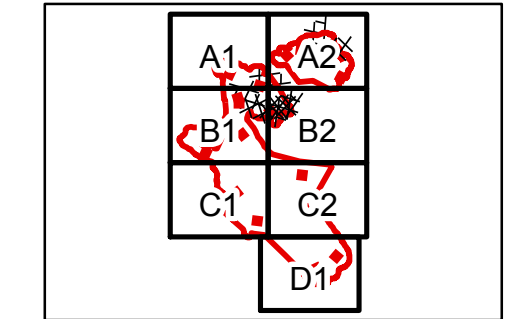
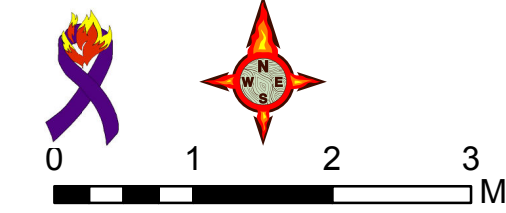


Air/Grnd N



- Legend**
-  Air/Grnd Break
 -  County Lines
 -  Roads
 -  Hwy 200
 -  Primitive Roads
- Owner**
-  Private
 -  MT State
 -  BLM
 -  FWS
-  Division
 -  Drop Point
 -  Incident Command Post
 -  Uncontrolled Fire Edge
 -  Completed Dozer Line






- Legend**
- Air/Grnd Break
 - County Lines
 - Roads
 - Hwy 200
 - Primitive Roads
- Owner**
- Private
 - MT State
 - BLM
 - FWS
- Other Symbols**
- Division
 - Drop Point
 - Incident Command Post
 - Uncontrolled Fire Edge
 - Completed Dozer Line






Legend


-  Air/Grnd Break
-  County Lines
-  Roads
-  Hwy 200
-  Primitive Roads

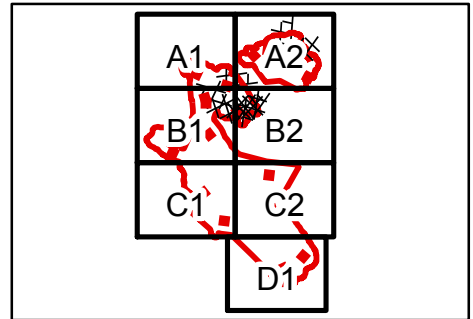
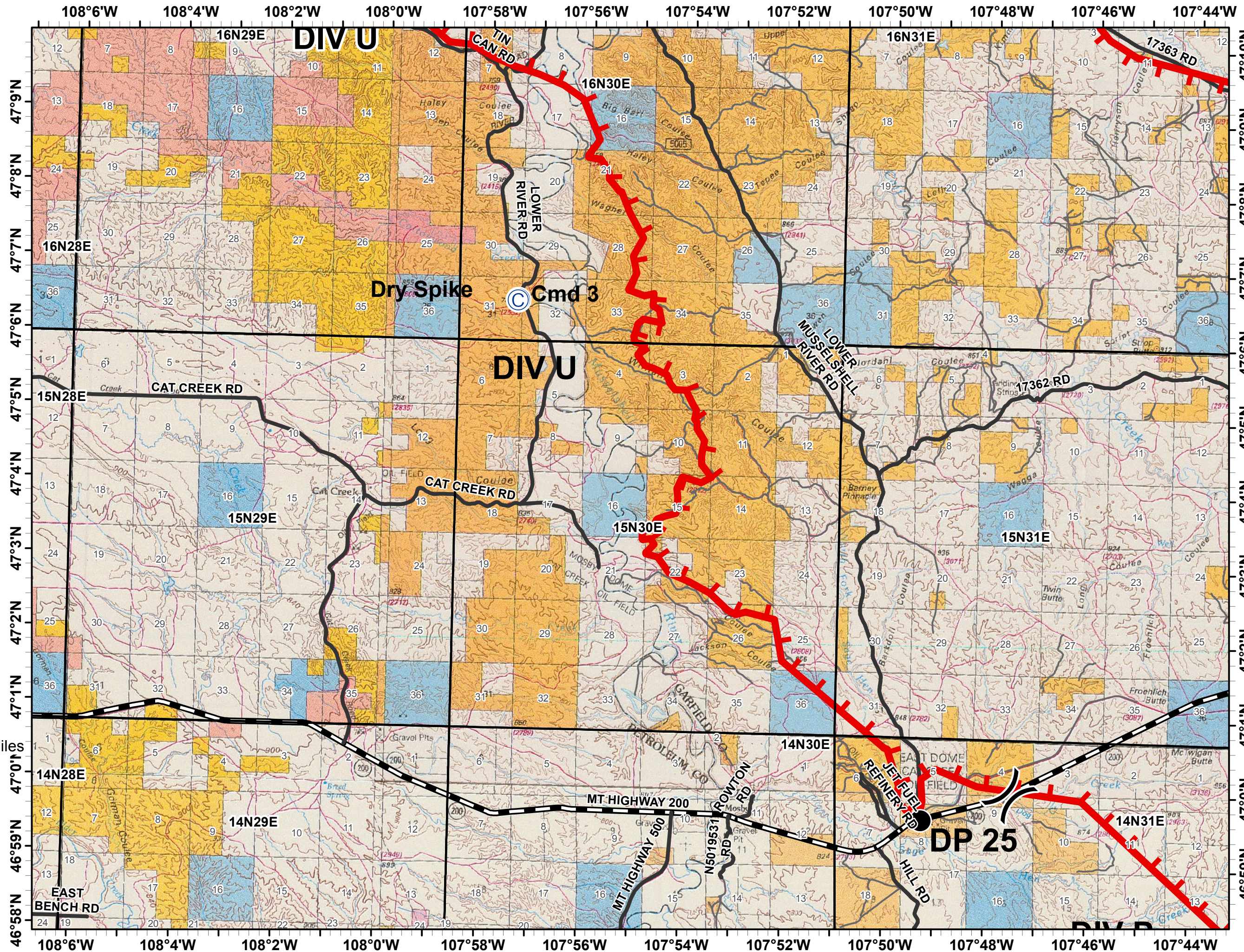
Owner

-  Private
-  MT State
-  BLM
-  FWS



Other Symbols

-  Division
-  Drop Point
-  Incident Command Post
-  Uncontrolled Fire Edge
-  Completed Dozer Line












Legend

-  Air/Grnd Break
-  County Lines
-  Roads
-  Hwy 200
-  Primitive Roads

Owner

-  Private
-  MT State
-  BLM
-  FWS

Other Symbols

-  Division
-  Drop Point
-  Incident Command Post
-  Uncontrolled Fire Edge
-  Completed Dozer Line