



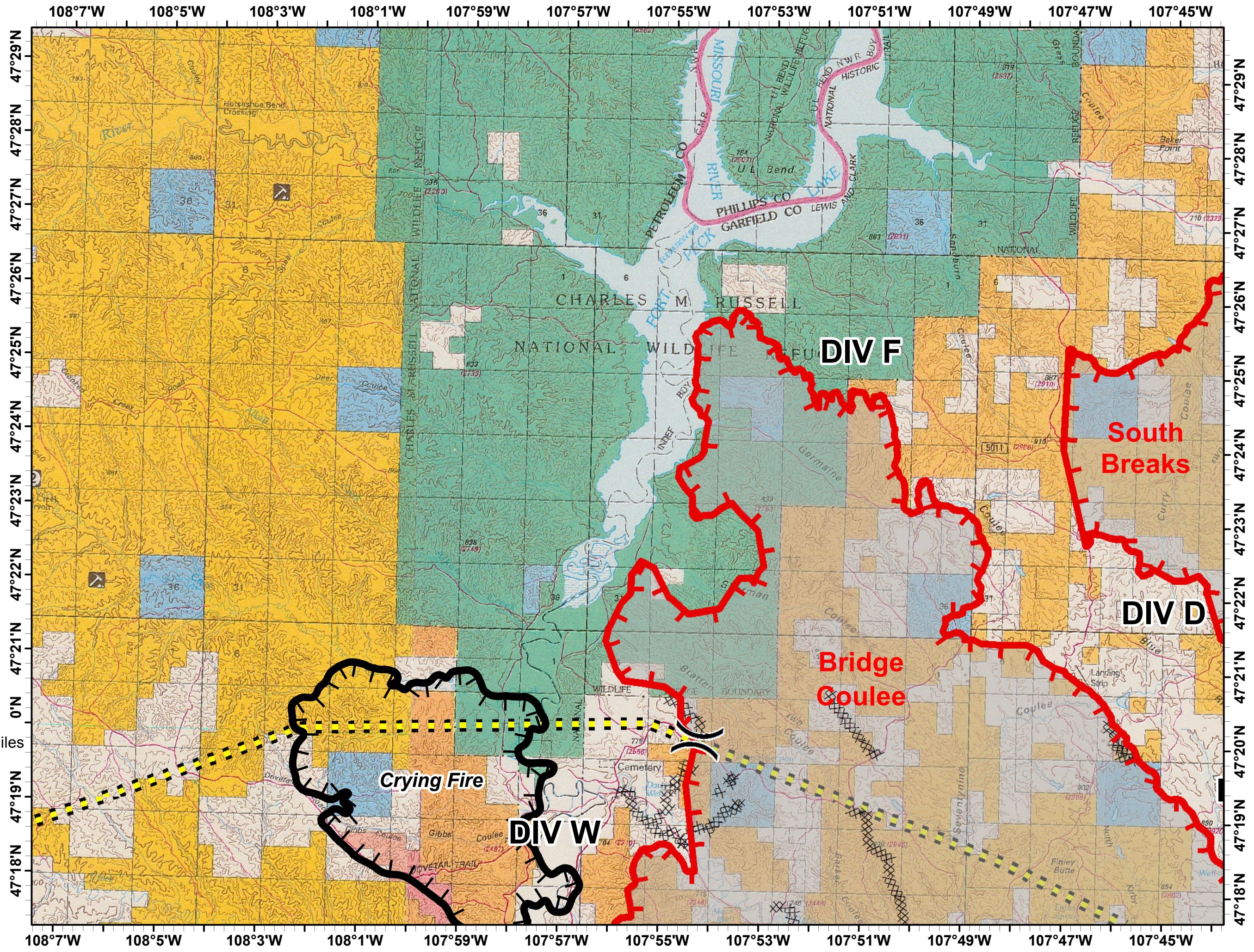
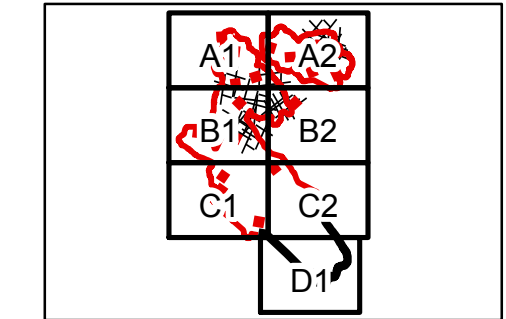
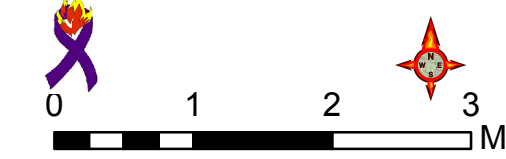





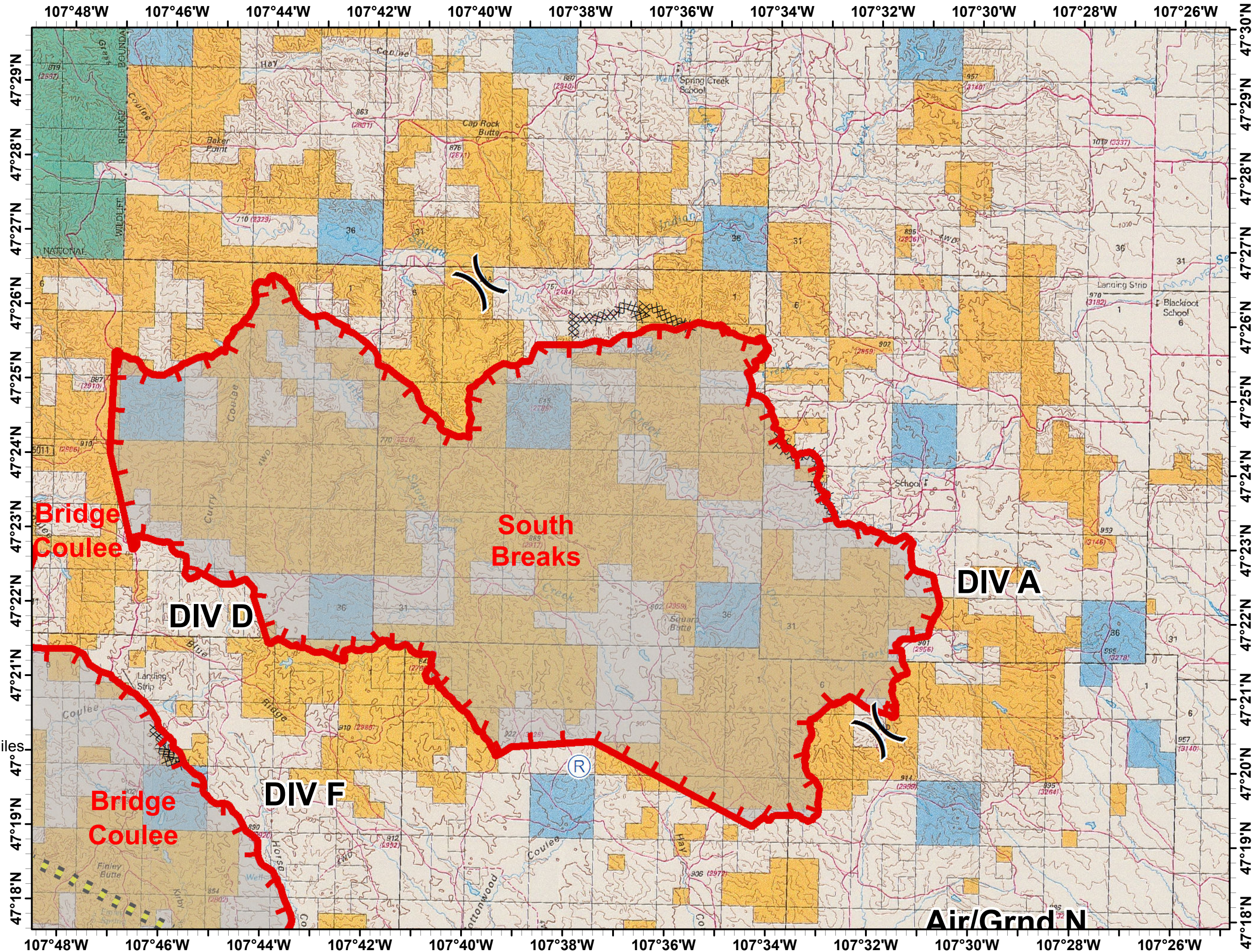
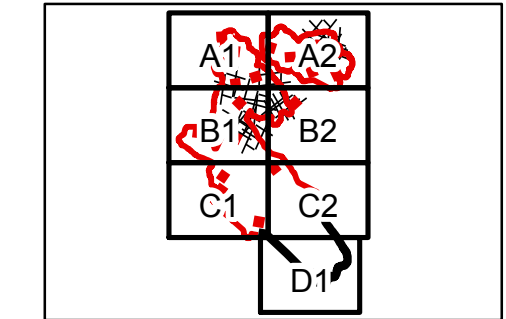
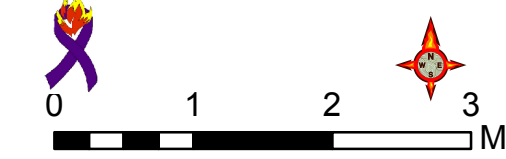


















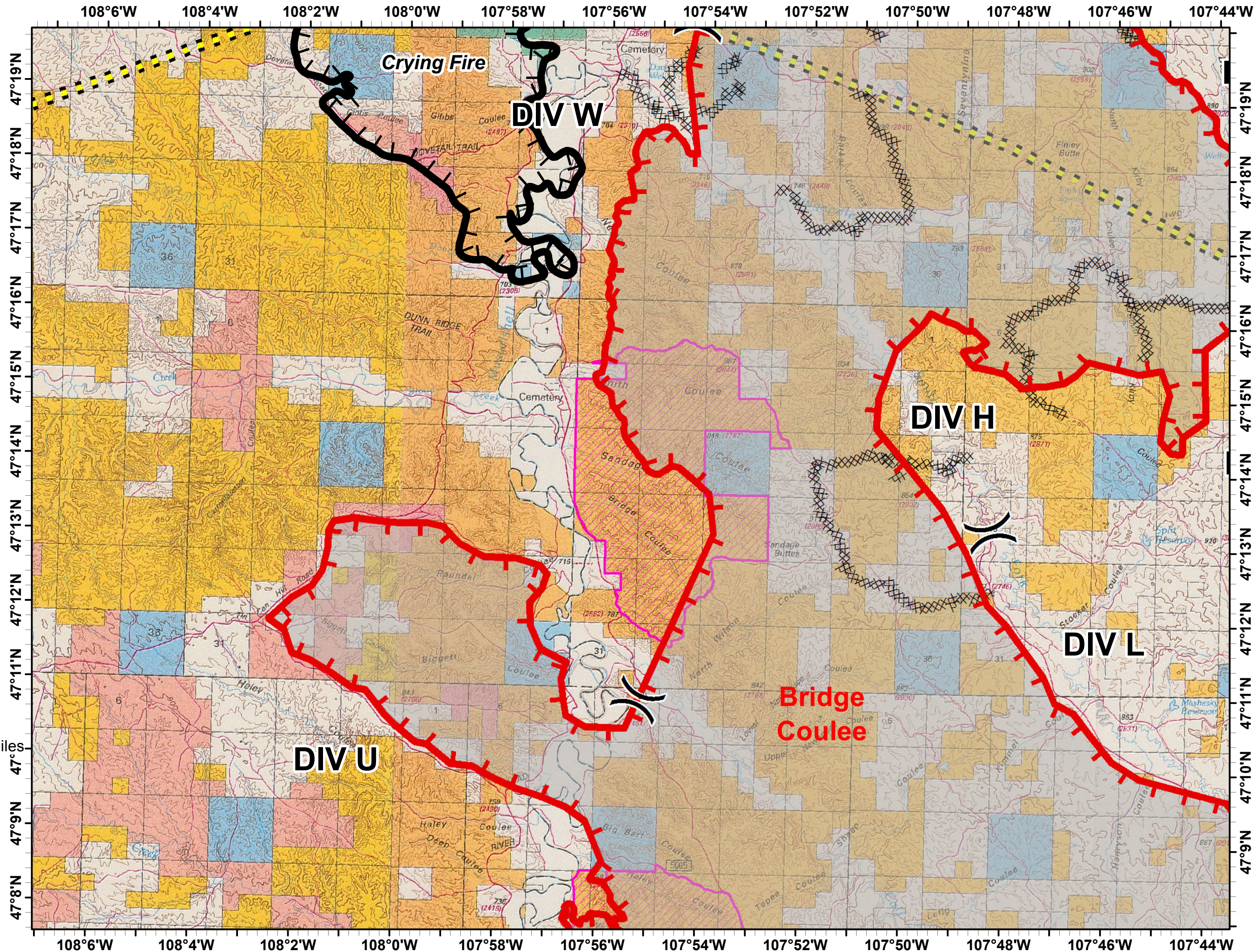
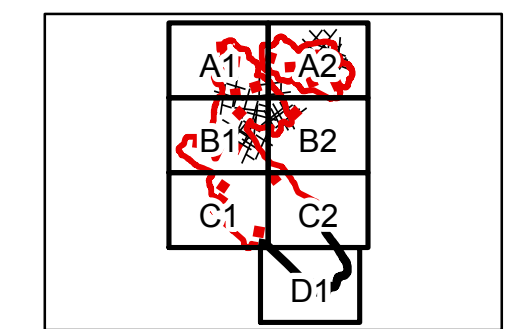
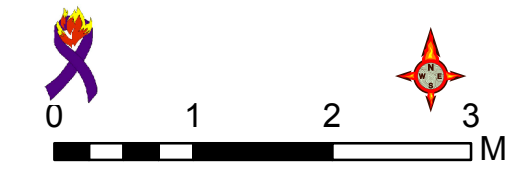
- Legend**
-  Wilderness Study Area
  -  Air/Grnd Break
  -  County Lines
  -  Roads
  -  Hwy 200
  -  Primitive Roads
- Owner**
-  Private
  -  MT State
  -  BLM
  -  FWS
  -  Division
  -  Drop Point
  -  Incident Command Post
  -  Uncontrolled Fire Edge
  -  Completed Dozer Line
  -  Completed Line



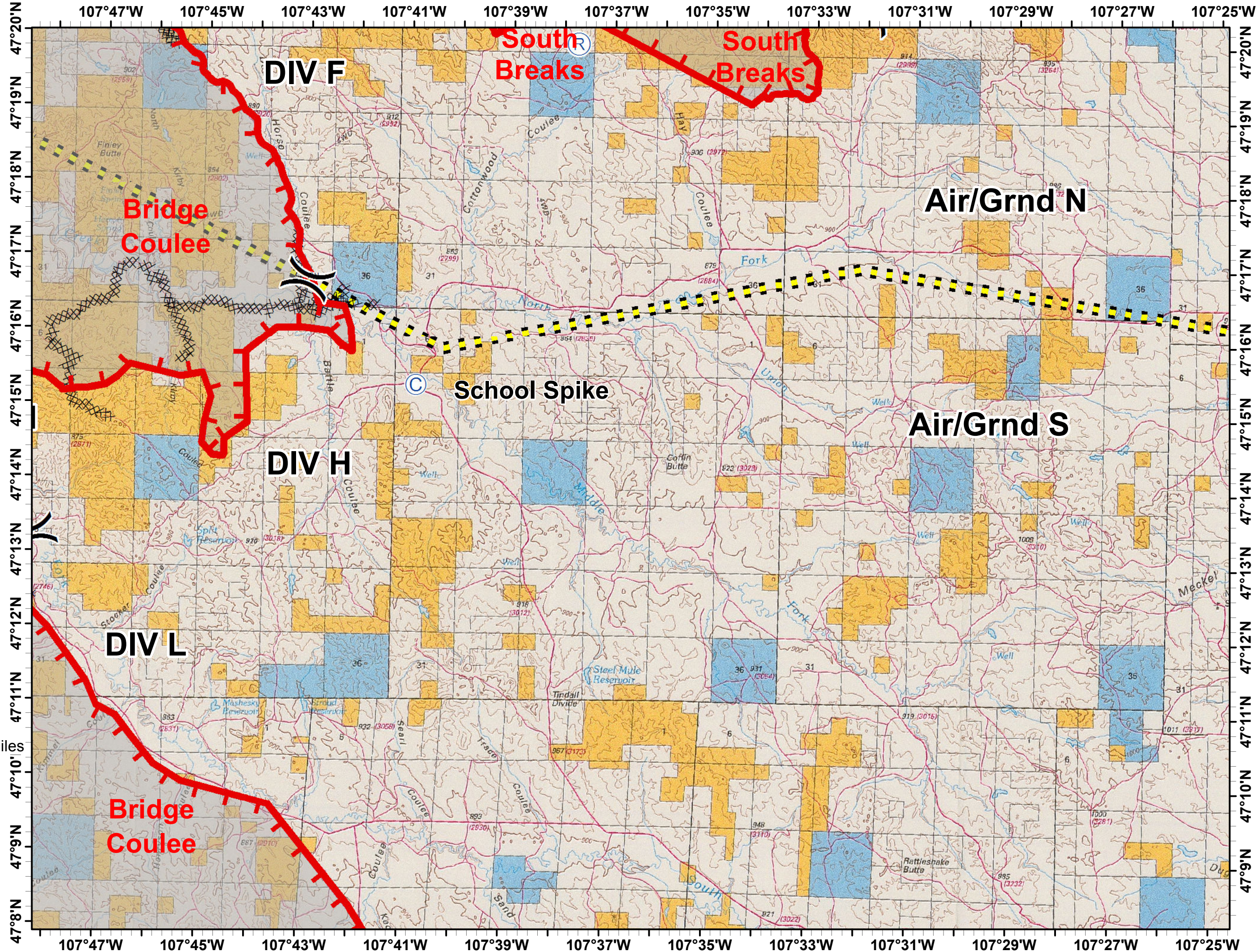
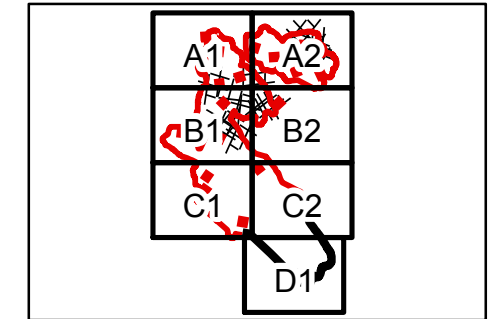
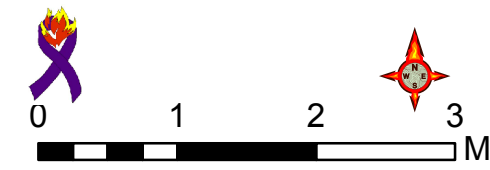
- Legend**
-  Wilderness Study Area
  -  Air/Grnd Break
  -  County Lines
  -  Roads
  -  Hwy 200
  -  Primitive Roads
  - Owner**
  -  Private
  -  MT State
  -  BLM
  -  FWS
  -  Division
  -  Drop Point
  -  Incident Command Post
  -  Uncontrolled Fire Edge
  -  Completed Dozer Line
  -  Completed Line



- Legend**
-  Wilderness Study Area
  -  Air/Grnd Break
  -  County Lines
  -  Roads
  -  Hwy 200
  -  Primitive Roads
- Owner**
-  Private
  -  MT State
  -  BLM
  -  FWS
- Division**
-  Division
  -  Drop Point
  -  Incident Command Post
  -  Uncontrolled Fire Edge
  -  Completed Dozer Line
  -  Completed Line



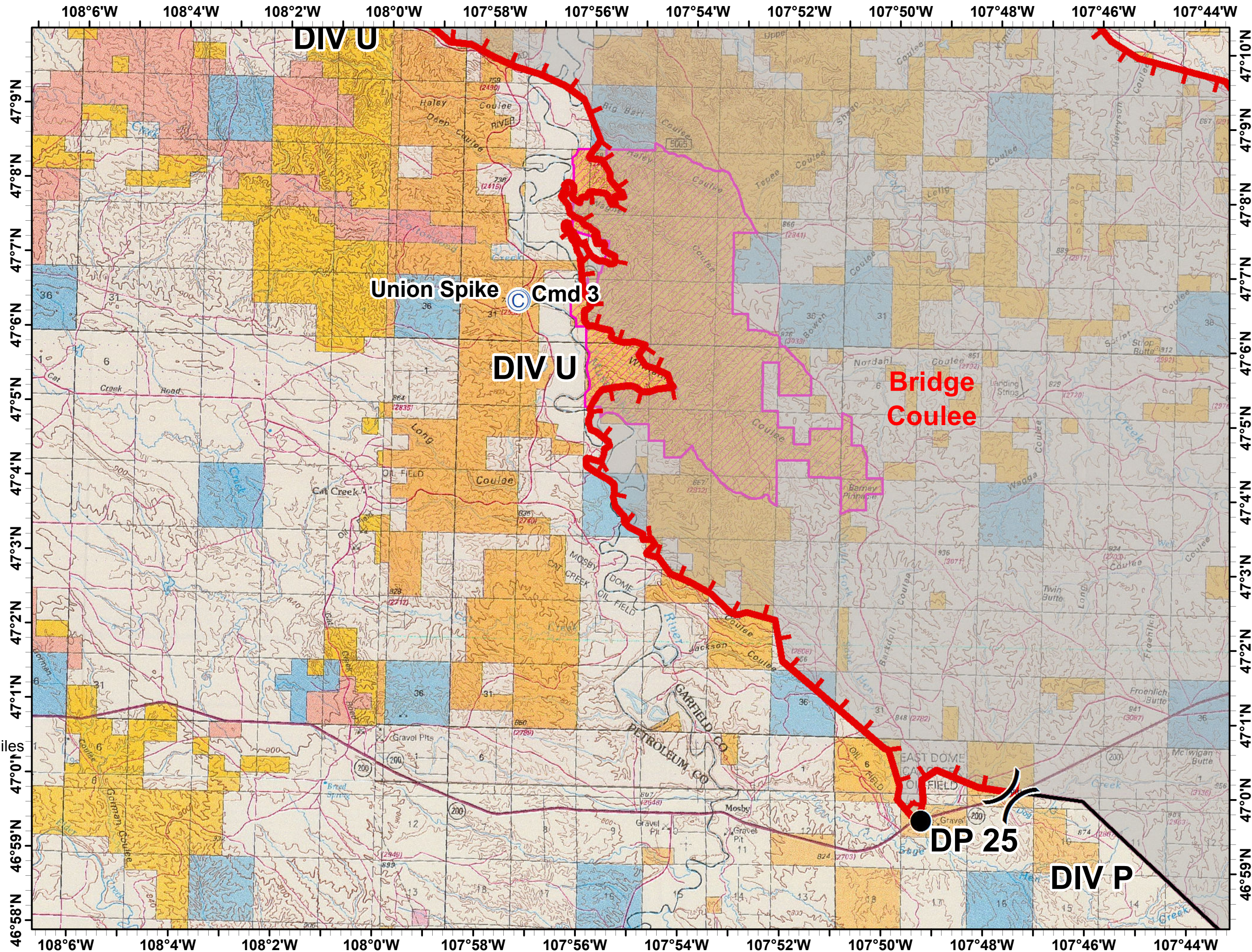
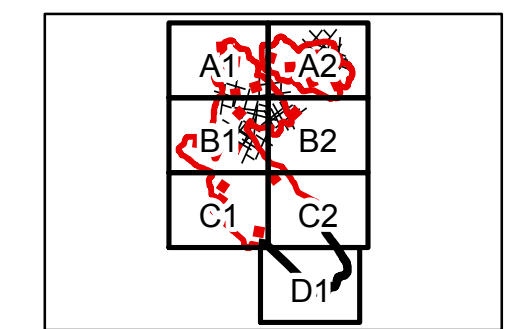
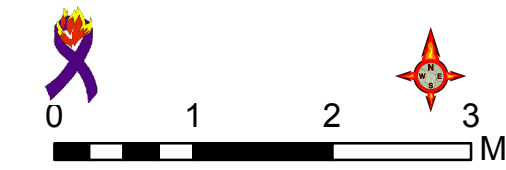
- Legend**
- Wilderness Study Area
  - Air/Grnd Break
  - County Lines
  - Roads
  - Hwy 200
  - Primitive Roads
- Owner**
- Private
  - MT State
  - BLM
  - FWS
  - Division
  - Drop Point
  - Incident Command Post
  - Uncontrolled Fire Edge
  - Completed Dozer Line
  - Completed Line









**Lodgepole Complex**  
 MT-MCD-000252

**IAP**  
 7/25/2017





- Legend**
- Wilderness Study Area
  - Air/Grnd Break
  - County Lines
  - Roads
  - Hwy 200
  - Primitive Roads
- Owner**
- Private
  - MT State
  - BLM
  - FWS
  - Division
  - Drop Point
  - Incident Command Post
  - Uncontrolled Fire Edge
  - Completed Dozer Line
  - Completed Line







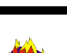
**Legend**



-  Wilderness Study Area
-  Air/Grnd Break
-  County Lines
-  Roads
-  Hwy 200
-  Primitive Roads

**Owner**

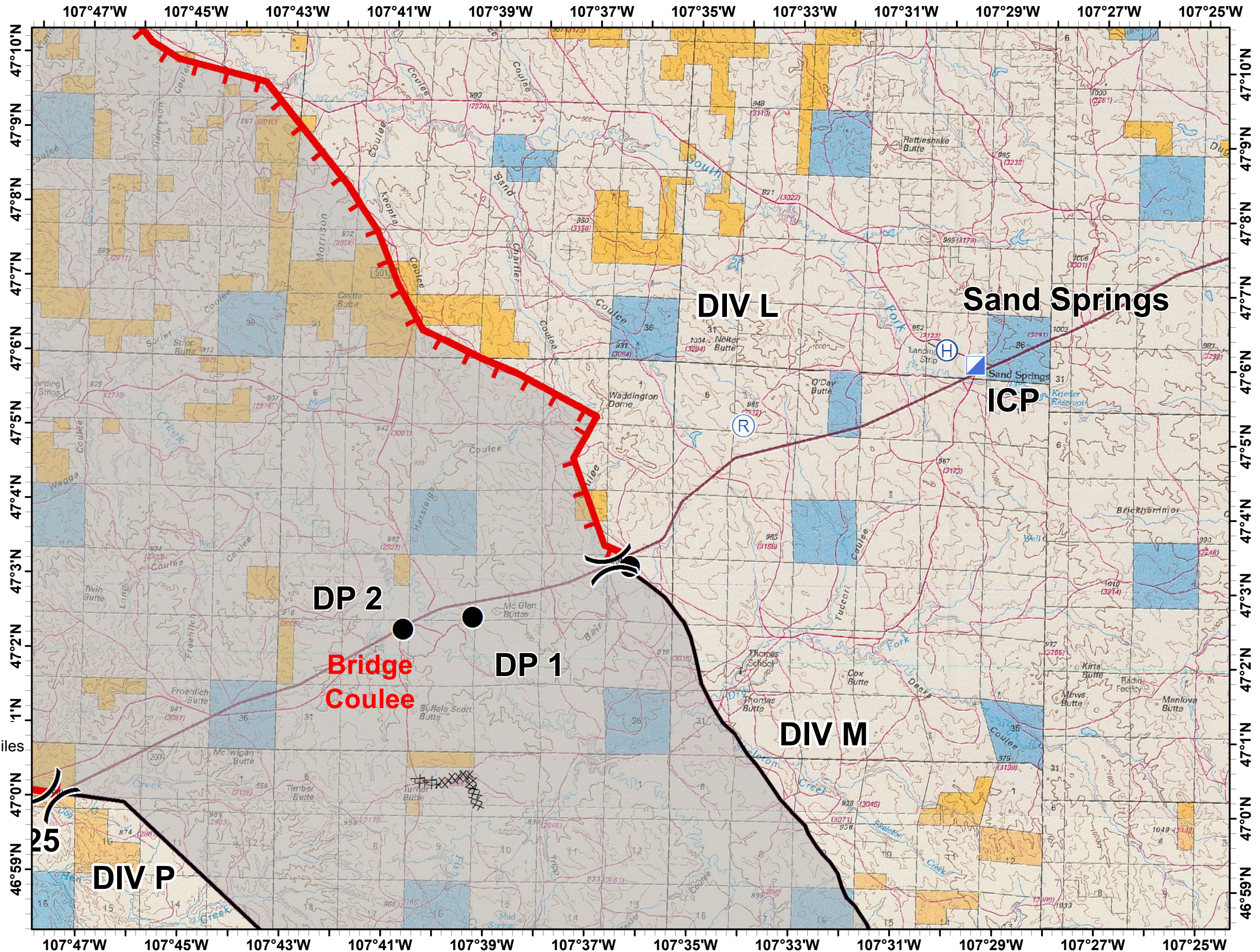
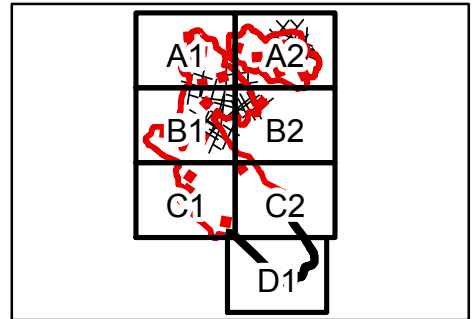
-  Private
-  MT State
-  BLM
-  FWS

















**Other Symbols**

-  Drop Point
-  Incident Command Post
-  Uncontrolled Fire Edge
-  Completed Dozer Line
-  Completed Line

0 1 2 3 Miles



- Legend**
-  Wilderness Study Area
  -  Air/Grnd Break
  -  County Lines
  -  Roads
  -  Hwy 200
  -  Primitive Roads
- Owner**
-  Private
  -  MT State
  -  BLM
  -  FWS
  -  Division
  -  Drop Point
  -  Incident Command Post
  -  Uncontrolled Fire Edge
  -  Completed Dozer Line
  -  Completed Line

