

Legend

- Wilderness Study Area
- Air/Grnd Break
- County Lines
- Roads
- Hwy 200
- Primitive Roads

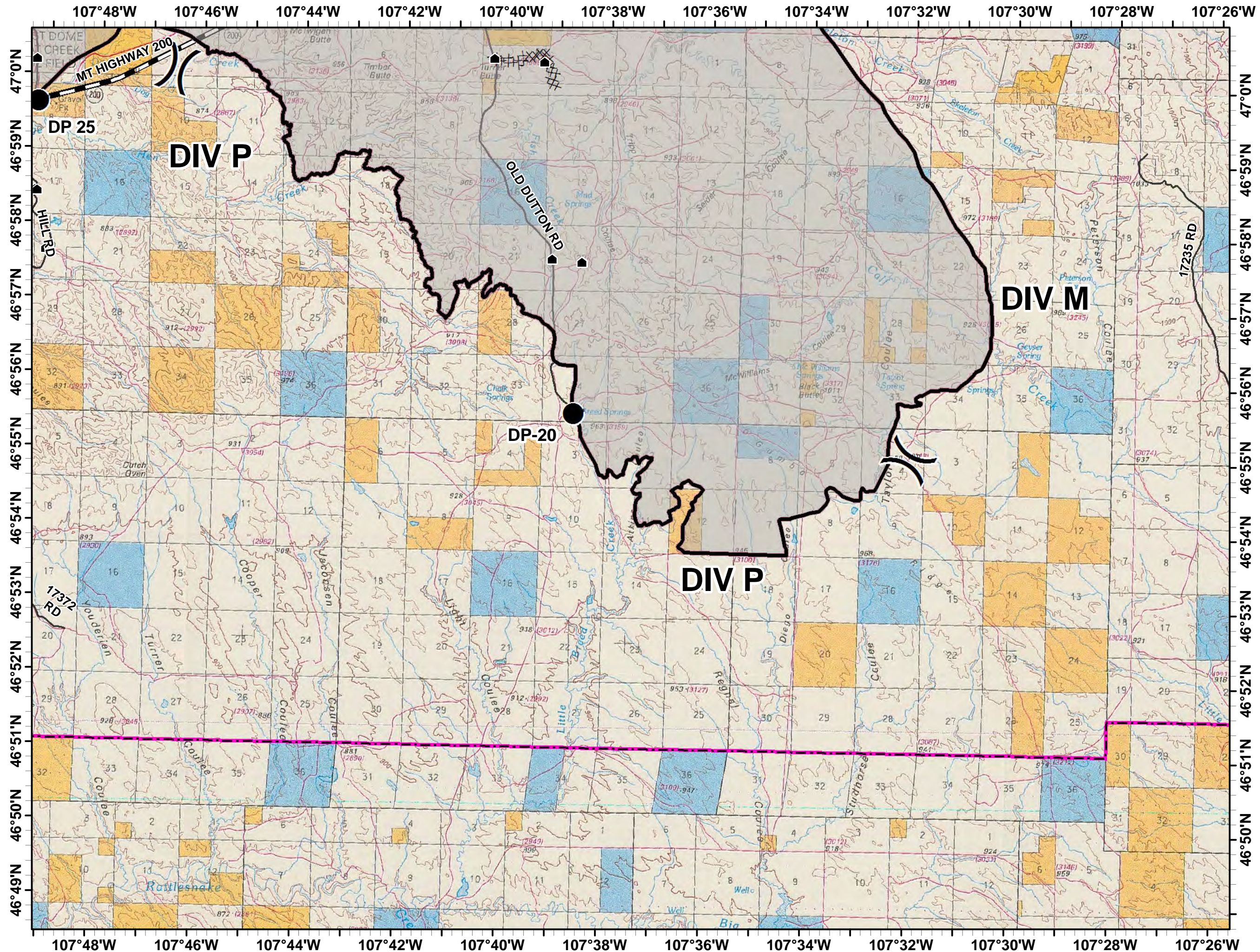
Owner

- Private
- MT State
- BLM
- FWS

Other Symbols

- Drop Point
- Incident Command Post
- Uncontrolled Fire Edge
- Completed Dozer Line
- Completed Line
- Structures

0 1 2 Miles



Page Name: D1

Page Number: 7