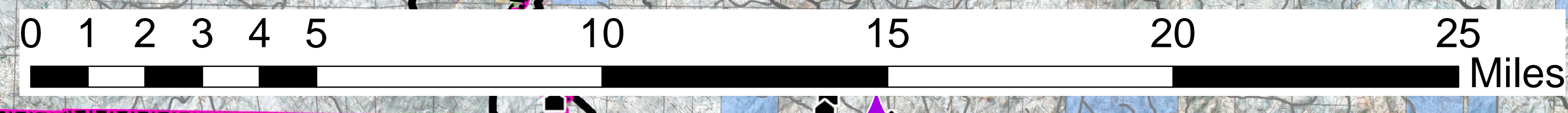
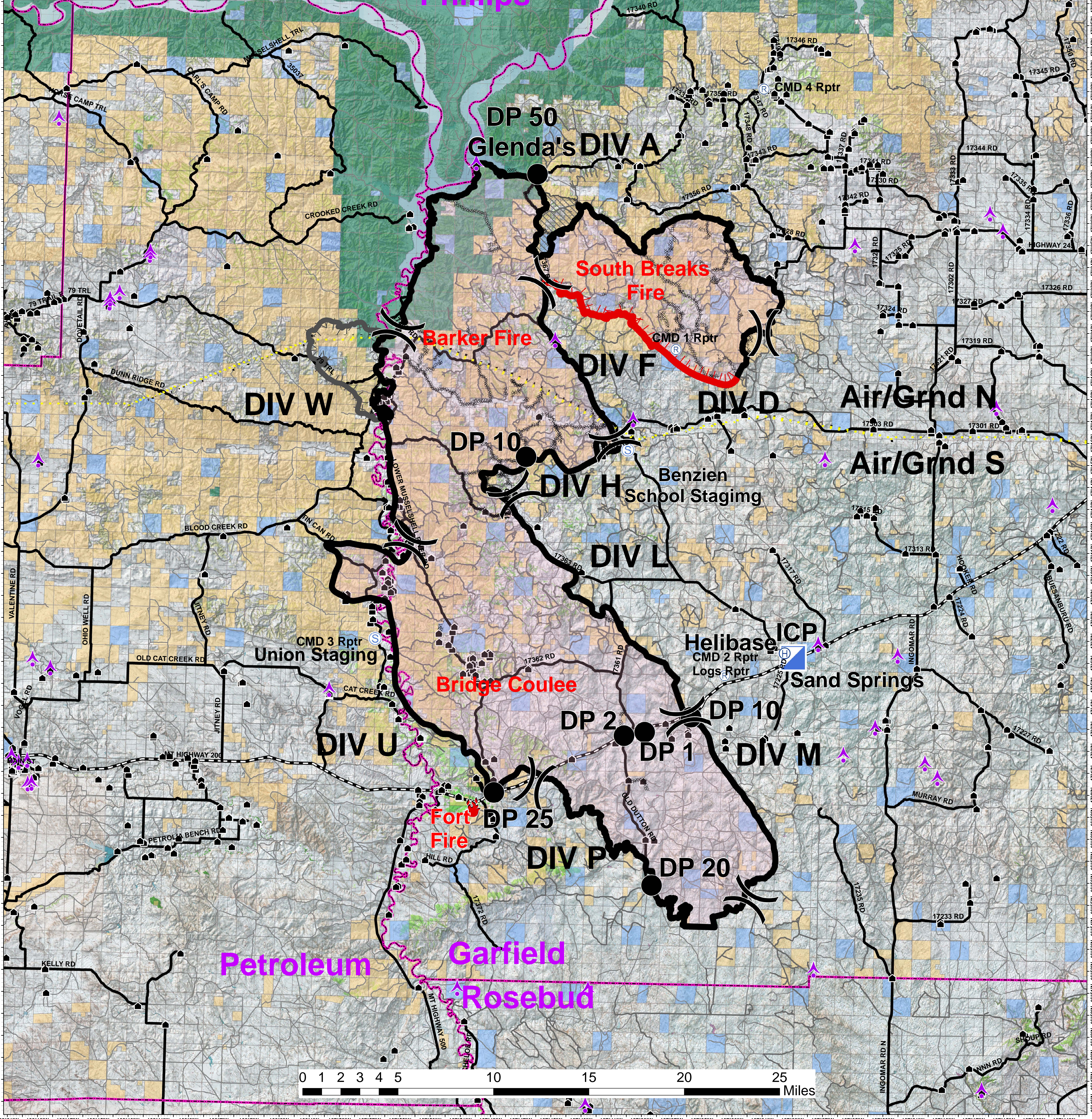


108°23'W 108°21'W 108°19'W 108°17'W 108°15'W 108°13'W 108°11'W 108°9'W 108°7'W 108°5'W 108°3'W 108°1'W 107°59'W 107°57'W 107°55'W 107°53'W 107°51'W 107°49'W 107°47'W 107°45'W 107°43'W 107°41'W 107°39'W 107°37'W 107°35'W 107°33'W 107°31'W 107°29'W 107°27'W 107°25'W 107°23'W 107°21'W 107°19'W 107°17'W 107°15'W 107°13'W 107°11'W

**Lodgepole Complex**  
**MT-MCD-000252**  
 Air Ops  
 7/29/2017  
 270,200 ac



<b>Legend</b>	<b>Owner</b>		
Air/Grnd Break	Private	Division	Completed Line
County Lines	MT State	Drop Point	Communications Towers
Hwy 200	BLM	Incident Command Post	Helibase
Major Roads	FWS	Uncontrolled Fire Edge	Repeater
Roads	Streams	Completed Dozer Line	Staging
			Curry Russell Fire
			Crying Fire
			Lodgepole TFR

