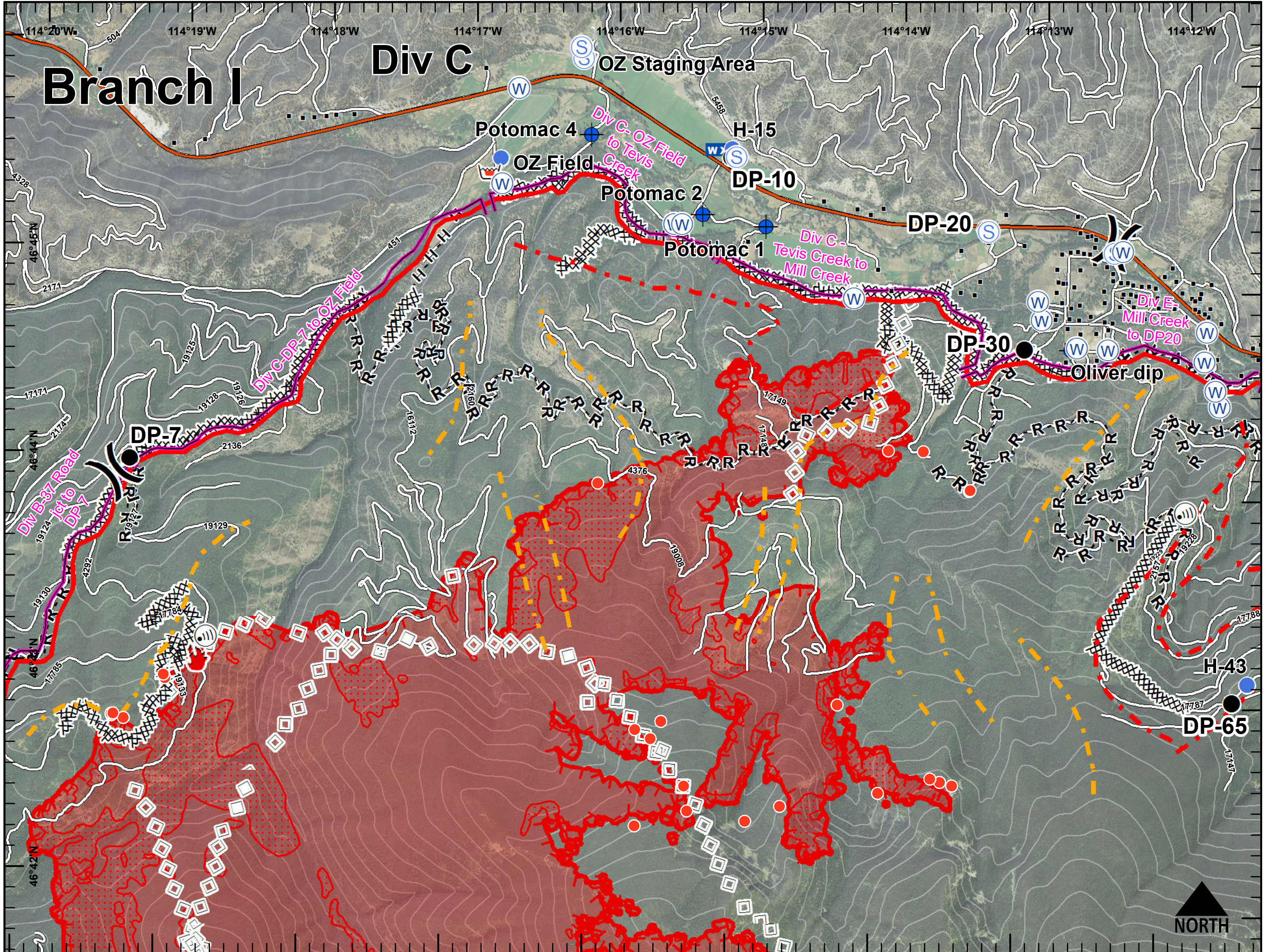




**Lolo Peak Fire**  
 MT-LNF-001288  
**Contingency Group**  
 Page 2  
 8/16/2017



11,287 acres, IR Perimeter  
 as of 8/15/2017 @ 2315



- IR Isolated Heat
- ⊕ Dip Site
- Drop Point
- 🔥 Fire Location
- Helispot
- Ⓜ Internet Access
- WX Mobile Weather Unit
- ☒ Retardant/Mud Pit
- Ⓢ Staging Area
- Ⓜ Water Source
- ⋯ Division Break
- Structures
- Div B-37 Road jct to DP 7
- Div C - Tevis Creek to Mill Creek
- Div C - OZ Field to Tevis Creek
- Div C-DP-7 to OZ Field
- Div E - Mill Creek to DP20
- - - Phase 1 Aerial Ignitions
- - - Phase 2 Aerial Ignitions
- Phase 1 Hand Ignitions
- 200ft Contours
- XXXXX Completed Dozer Line
- H - H Completed Hand Line
- R - R Road as Completed Line
- Aerial Retardant Drop
- Uncontrolled Fire Edge
- Interstate and Highways
- ▨ IR Intense Heat
- ▤ IR Scattered Heat
- Roads
- ▭ State Boundary
- ▭ Wildfire Daily Fire Perimeter

