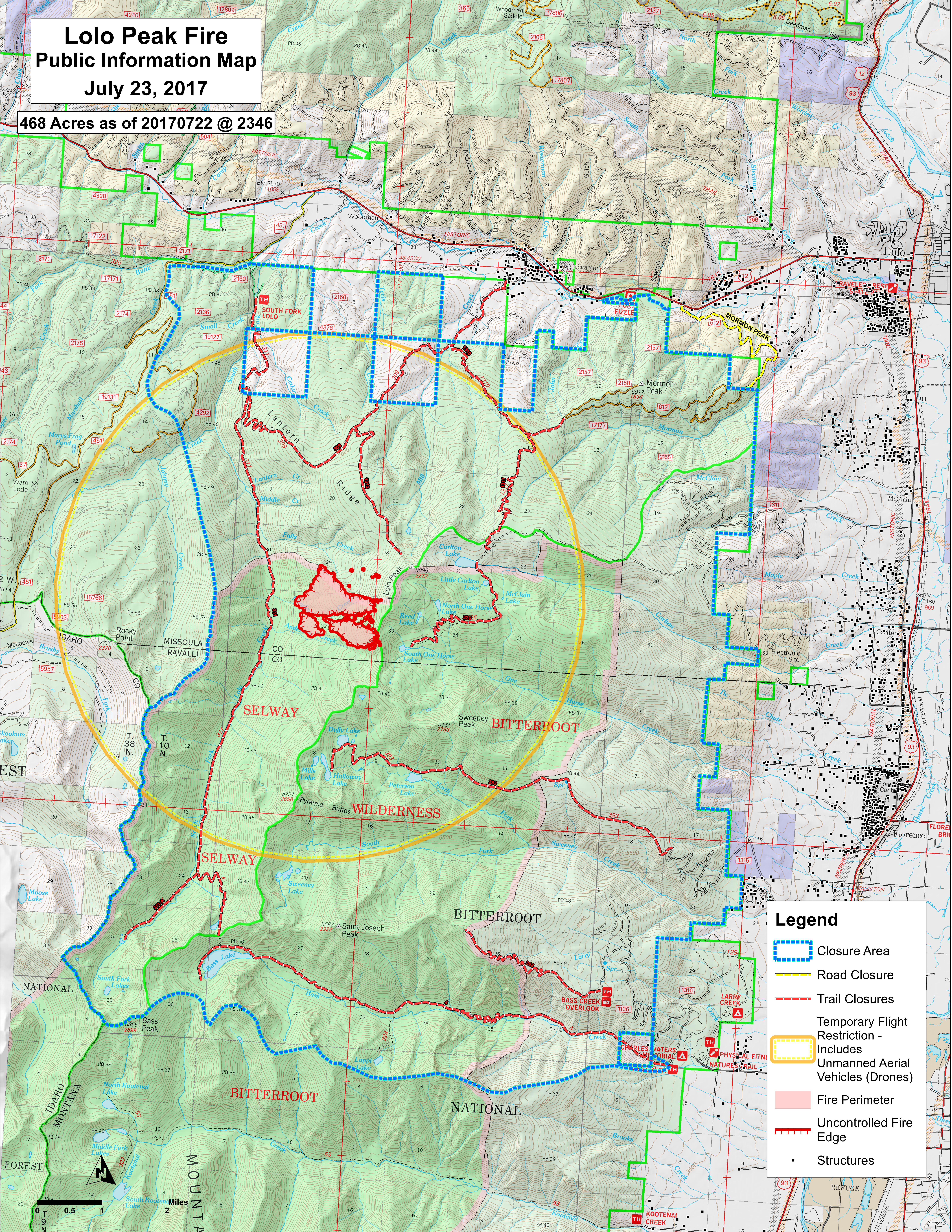


# Lolo Peak Fire Public Information Map July 23, 2017

468 Acres as of 20170722 @ 2346



### Legend

- Closure Area
- Road Closure
- Trail Closures
- Temporary Flight Restriction - Includes Unmanned Aerial Vehicles (Drones)
- Fire Perimeter
- Uncontrolled Fire Edge
- Structures

