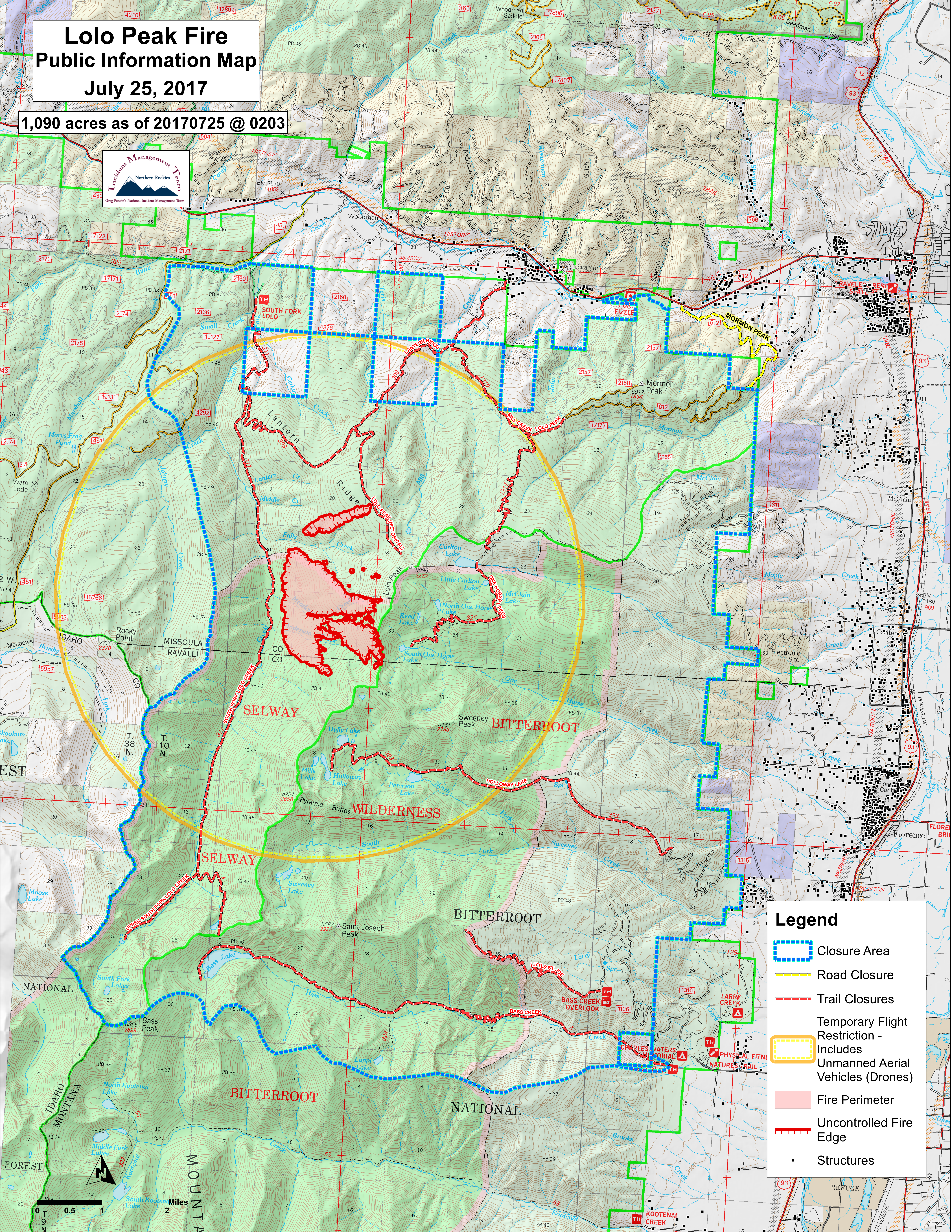


# Lolo Peak Fire Public Information Map July 25, 2017

1,090 acres as of 20170725 @ 0203



### Legend

- Closure Area
- Road Closure
- Trail Closures
- Temporary Flight Restriction - Includes Unmanned Aerial Vehicles (Drones)
- Fire Perimeter
- Uncontrolled Fire Edge
- Structures

