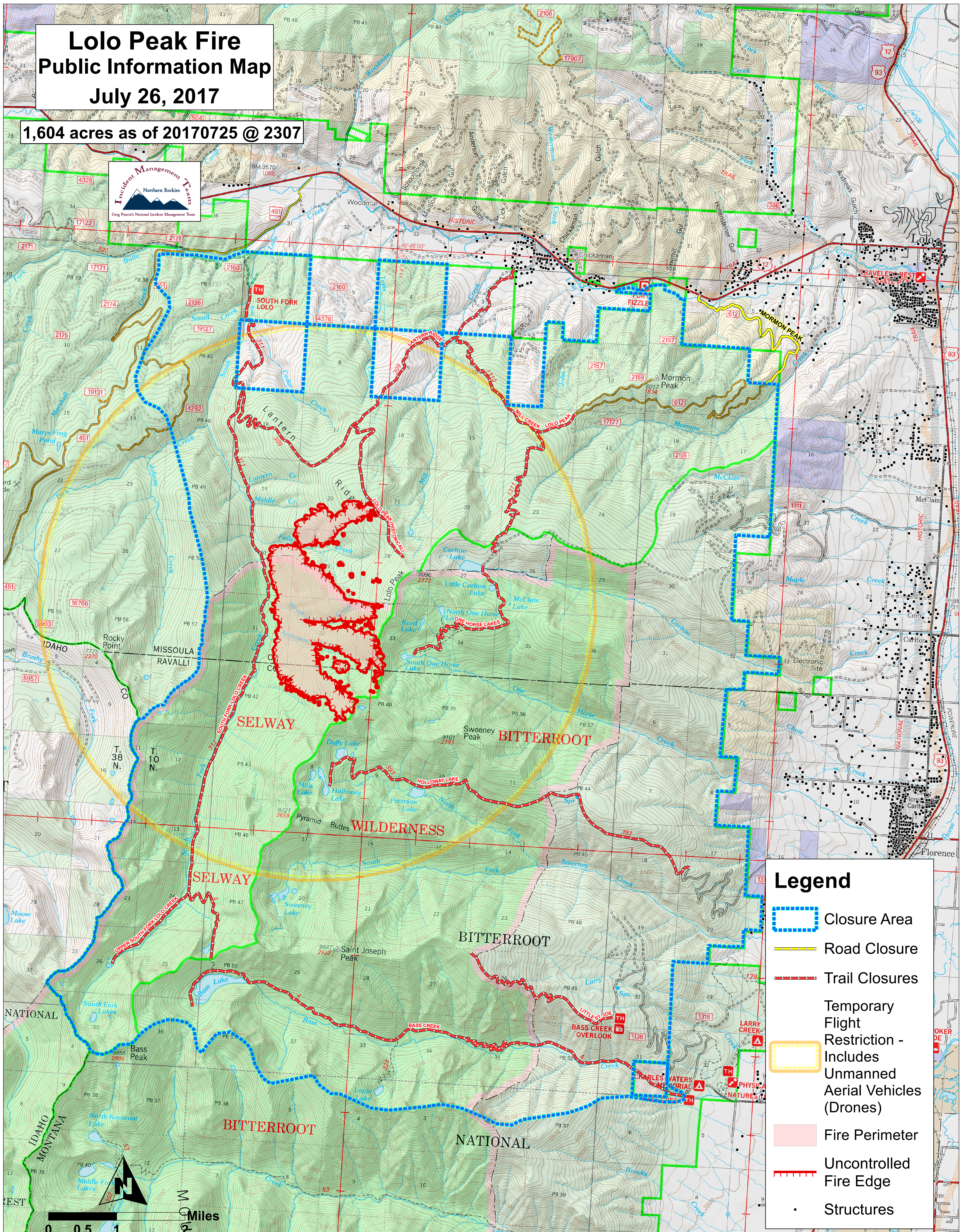


# Lolo Peak Fire Public Information Map July 26, 2017

1,604 acres as of 20170725 @ 2307



### Legend

- Closure Area
- Road Closure
- Trail Closures
- Temporary Flight Restriction - Includes Unmanned Aerial Vehicles (Drones)
- Fire Perimeter
- Uncontrolled Fire Edge
- Structures

