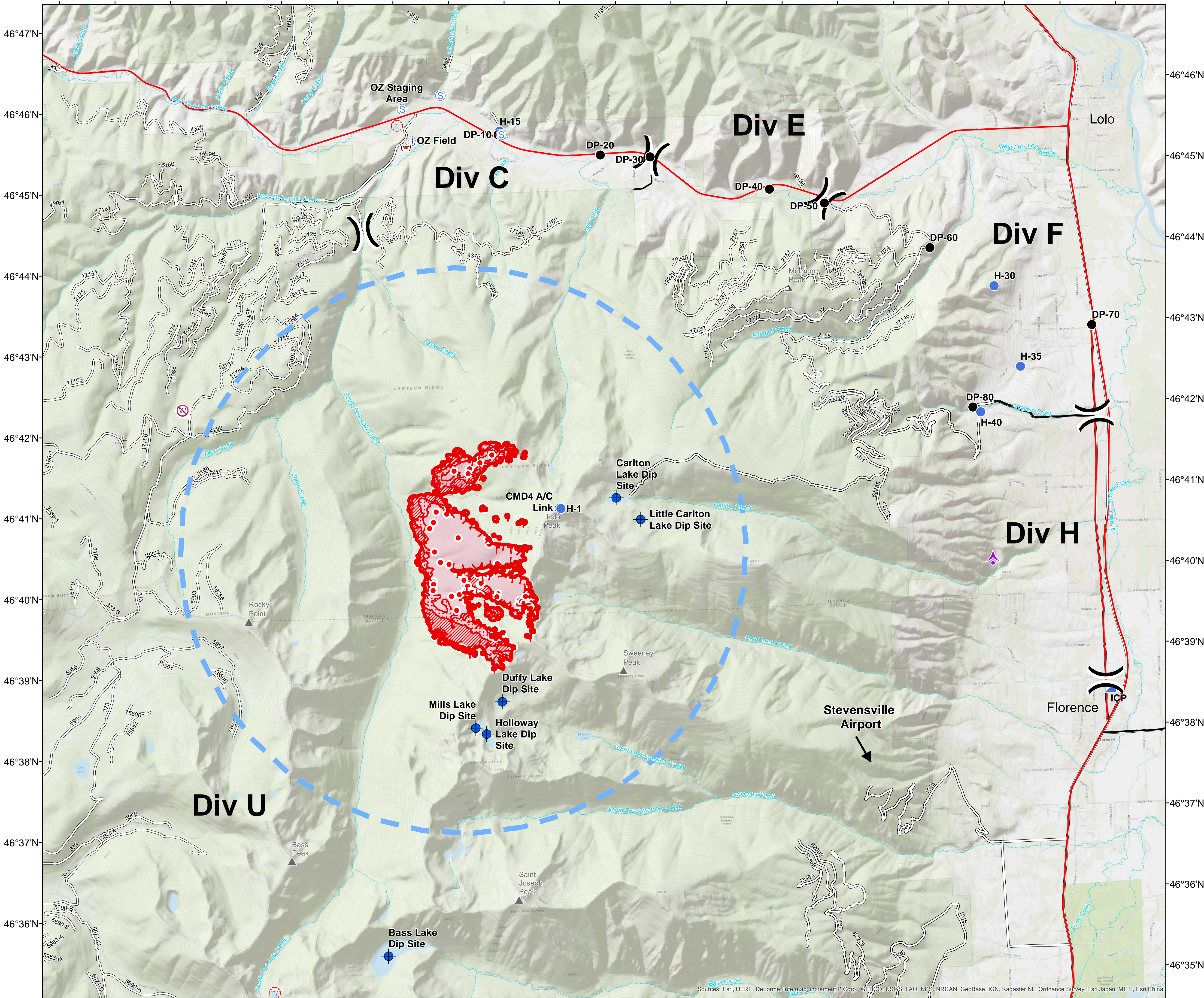


114°23'W 114°22'W 114°21'W 114°20'W 114°19'W 114°18'W 114°17'W 114°16'W 114°15'W 114°14'W 114°13'W 114°12'W 114°11'W 114°10'W 114°9'W 114°8'W 114°7'W 114°6'W 114°5'W 114°4'W



114°23'W 114°22'W 114°21'W 114°20'W 114°19'W 114°18'W 114°17'W 114°16'W 114°15'W 114°14'W 114°13'W 114°12'W 114°11'W 114°10'W 114°9'W 114°8'W 114°7'W 114°6'W 114°5'W 114°4'W

Lolo Peak Fire Pilot Map

MT-LNF-001288
 July 26, 2017
 1604 Acres
 Email cost:

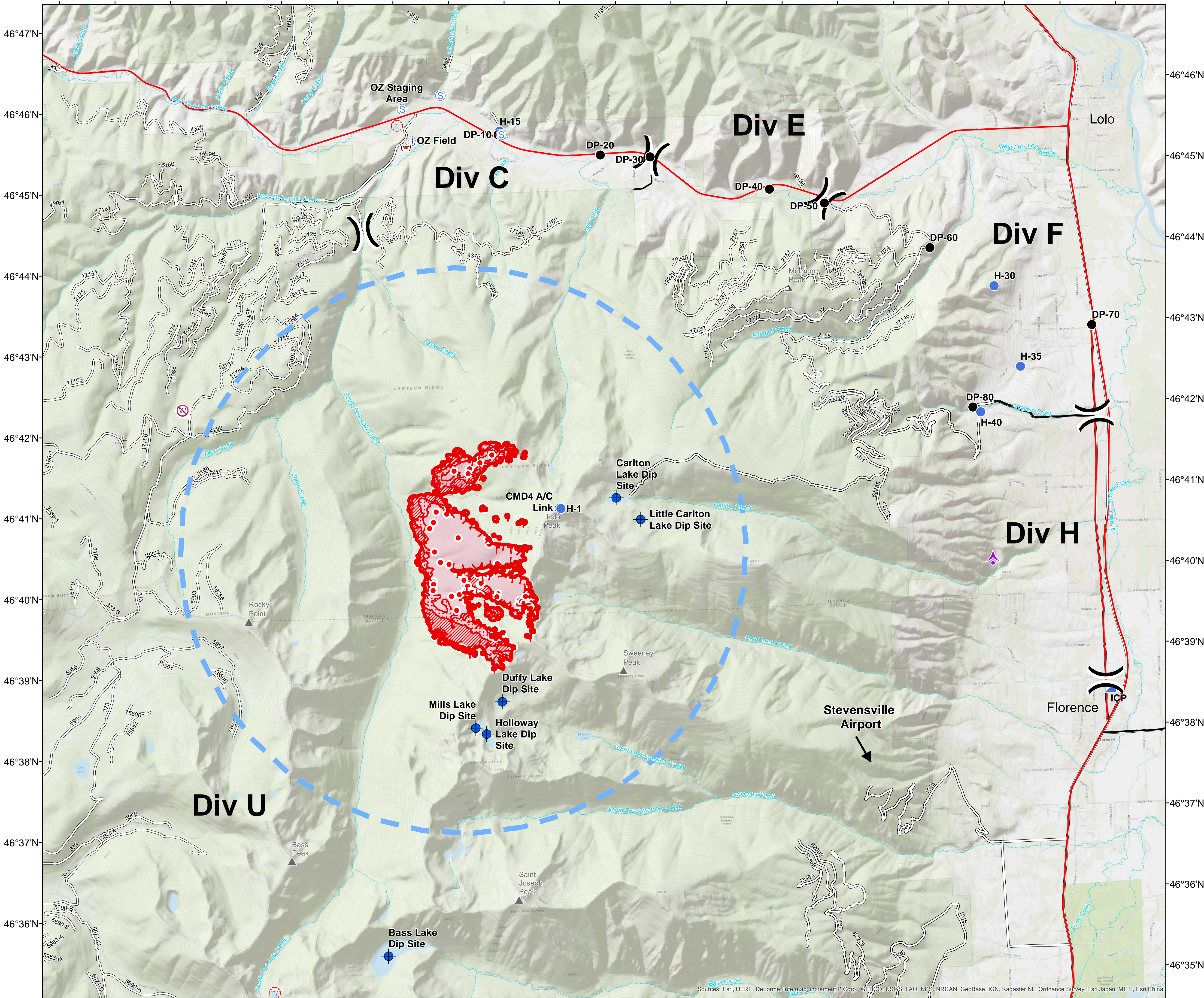
lolopeakfinance@gmail.com



Frequencies	Type	Freq.
TFR/Fixed-Wing AA	AM	128.6500
Rotorwing	AM	
A/G Primary	FM TX/RX	168.6375
A/G Secondary	FM TX/RX	
TOLC	FM RX/TX	
Deck		163.1000
Life Flight (TAN)	FM RX/TX	155.3400
UNICOM	FM RX/TX	122.8
Air Guard	FM RX/TX	168.6250
		110.9 TT/RT

Label	Latitude	Longitude
Bass Lake Dip Site	46° 35.454'	-114° 17.673'
Carlton Lake Dip Site	46° 41.020'	-114° 13.301'
CMD4 A/C Link	46° 40.910'	-114° 14.318'
DP-10	46° 45.557'	-114° 15.195'
DP-20	46° 45.261'	-114° 13.372'
DP-30	46° 45.217'	-114° 12.477'
DP-40	46° 44.765'	-114° 10.354'
DP-50	46° 44.569'	-114° 9.373'
DP-60	46° 43.971'	-114° 7.506'
DP-70	46° 42.947'	-114° 4.650'
DP-80	46° 41.981'	-114° 6.838'
Duffy Lake Dip Site	46° 38.548'	-114° 15.475'
Earl Tennant Spike Camp	46° 46.453'	-114° 26.065'
H-1	46° 40.910'	-114° 14.301'
H-15	46° 45.599'	-114° 15.166'
H-30	46° 43.470'	-114° 6.378'
H-35	46° 42.464'	-114° 5.956'
H-40	46° 41.918'	-114° 6.700'
Holloway Lake Dip Site	46° 38.157'	-114° 15.777'
ICP	46° 38.456'	-114° 4.552'
Little Carlton Lake Dip Site	46° 40.739'	-114° 12.875'
Mills Lake Dip Site	46° 38.235'	-114° 15.966'
OZ Field	46° 45.511'	-114° 16.783'
OZ Staging Area	46° 45.912'	-114° 16.903'
Stevensville Airport	46° 31.553'	-114° 3.110'

114°23'W 114°22'W 114°21'W 114°20'W 114°19'W 114°18'W 114°17'W 114°16'W 114°15'W 114°14'W 114°13'W 114°12'W 114°11'W 114°10'W 114°9'W 114°8'W 114°7'W 114°6'W 114°5'W 114°4'W



Lolo Peak Fire Pilot Map

MT-LNF-001288
 July 26, 2017
 1604 Acres
 Email cost:

lolopeakfinance@gmail.com

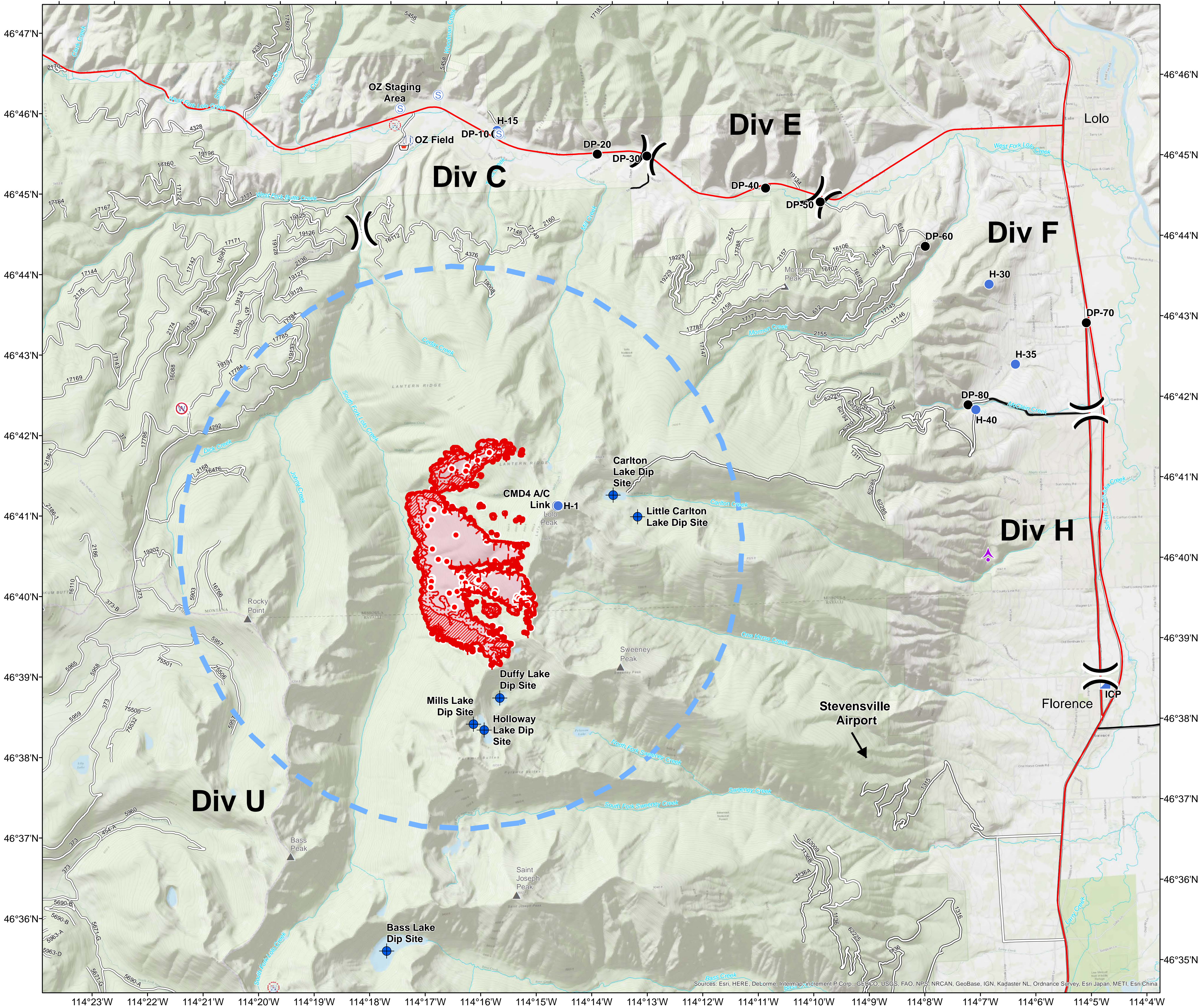


Frequencies	Type	Freq.
TFR/Fixed-Wing AA	AM	128.6500
Rotorwing	AM	
A/G Primary	FM TX/RX	168.6375
A/G Secondary	FM TX/RX	
TOLC	FM RX/TX	
Deck		163.1000
Life Flight (TAN)	FM RX/TX	155.3400
UNICOM	FM RX/TX	122.8
Air Guard	FM RX/TX	168.6250
		110.9 TT/RT

Label	Latitude	Longitude
Bass Lake Dip Site	46° 35.454'	-114° 17.673'
Carlton Lake Dip Site	46° 41.020'	-114° 13.301'
CMD4 A/C Link	46° 40.910'	-114° 14.318'
DP-10	46° 45.557'	-114° 15.195'
DP-20	46° 45.261'	-114° 13.372'
DP-30	46° 45.217'	-114° 12.477'
DP-40	46° 44.765'	-114° 10.354'
DP-50	46° 44.569'	-114° 9.373'
DP-60	46° 43.971'	-114° 7.506'
DP-70	46° 42.947'	-114° 4.650'
DP-80	46° 41.981'	-114° 6.838'
Duffy Lake Dip Site	46° 38.548'	-114° 15.475'
Earl Tennant Spike Camp	46° 46.453'	-114° 26.065'
H-1	46° 40.910'	-114° 14.301'
H-15	46° 45.599'	-114° 15.166'
H-30	46° 43.470'	-114° 6.378'
H-35	46° 42.464'	-114° 5.956'
H-40	46° 41.918'	-114° 6.700'
Holloway Lake Dip Site	46° 38.157'	-114° 15.777'
ICP	46° 38.456'	-114° 4.552'
Little Carlton Lake Dip Site	46° 40.739'	-114° 12.875'
Mills Lake Dip Site	46° 38.235'	-114° 15.966'
OZ Field	46° 45.511'	-114° 16.783'
OZ Staging Area	46° 45.912'	-114° 16.903'
Stevensville Airport	46° 31.553'	-114° 3.110'

Sources: Esri, HERE, DeLorme, Intermap, increment P Corp., GEBCO, USGS, FAO, NPS, NRCAN, GeoBase, IGN, Kadaster NL, Ordnance Survey, Esri Japan, METI, Esri China

114°23'W 114°22'W 114°21'W 114°20'W 114°19'W 114°18'W 114°17'W 114°16'W 114°15'W 114°14'W 114°13'W 114°12'W 114°11'W 114°10'W 114°9'W 114°8'W 114°7'W 114°6'W 114°5'W 114°4'W



Lolo Peak Fire Pilot Map

MT-LNF-001288
 July 26, 2017
 1604 Acres
 Email cost:

lolopeakfinance@gmail.com

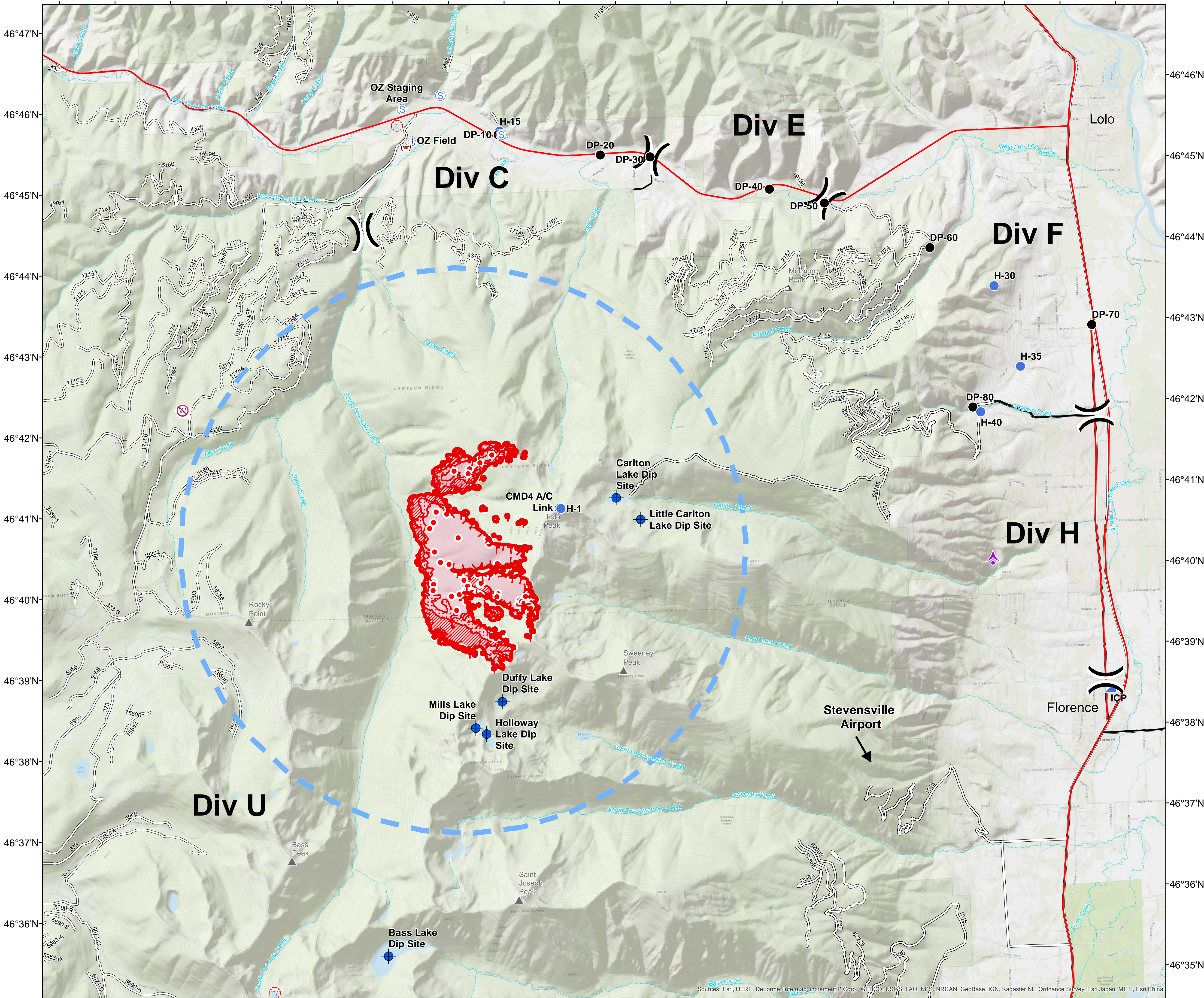


Frequencies	Type	Freq.
TFR/Fixed-Wing AA	AM	128.6500
Rotorwing	AM	
A/G Primary	FM TX/RX	168.6375
A/G Secondary	FM TX/RX	
TOLC	FM RX/TX	
Deck		163.1000
Life Flight (TAN)	FM RX/TX	155.3400
UNICOM	FM RX/TX	122.8
Air Guard	FM RX/TX	168.6250
		110.9 TT/RT

Label	Latitude	Longitude
Bass Lake Dip Site	46° 35.454'	-114° 17.673'
Carlton Lake Dip Site	46° 41.020'	-114° 13.301'
CMD4 A/C Link	46° 40.910'	-114° 14.318'
DP-10	46° 45.557'	-114° 15.195'
DP-20	46° 45.261'	-114° 13.372'
DP-30	46° 45.217'	-114° 12.477'
DP-40	46° 44.765'	-114° 10.354'
DP-50	46° 44.569'	-114° 9.373'
DP-60	46° 43.971'	-114° 7.506'
DP-70	46° 42.947'	-114° 4.650'
DP-80	46° 41.981'	-114° 6.838'
Duffy Lake Dip Site	46° 38.548'	-114° 15.475'
Earl Tennant Spike Camp	46° 46.453'	-114° 26.065'
H-1	46° 40.910'	-114° 14.301'
H-15	46° 45.599'	-114° 15.166'
H-30	46° 43.470'	-114° 6.378'
H-35	46° 42.464'	-114° 5.956'
H-40	46° 41.918'	-114° 6.700'
Holloway Lake Dip Site	46° 38.157'	-114° 15.777'
ICP	46° 38.456'	-114° 4.552'
Little Carlton Lake Dip Site	46° 40.739'	-114° 12.875'
Mills Lake Dip Site	46° 38.235'	-114° 15.966'
OZ Field	46° 45.511'	-114° 16.783'
OZ Staging Area	46° 45.912'	-114° 16.903'
Stevensville Airport	46° 31.553'	-114° 3.110'

Sources: Esri, HERE, DeLorme, Intermap, increment P Corp., GEBCO, USGS, FAO, NPS, NRCAN, GeoBase, IGN, Kadaster NL, Ordnance Survey, Esri Japan, METI, Esri China

114°23'W 114°22'W 114°21'W 114°20'W 114°19'W 114°18'W 114°17'W 114°16'W 114°15'W 114°14'W 114°13'W 114°12'W 114°11'W 114°10'W 114°9'W 114°8'W 114°7'W 114°6'W 114°5'W 114°4'W



Lolo Peak Fire Pilot Map

MT-LNF-001288
 July 26, 2017
 1604 Acres
 Email cost:

lolopeakfinance@gmail.com



Frequencies	Type	Freq.
TFR/Fixed-Wing AA	AM	128.6500
Rotorwing	AM	
A/G Primary	FM TX/RX	168.6375
A/G Secondary	FM TX/RX	
TOLC	FM RX/TX	
Deck		163.1000
Life Flight (TAN)	FM RX/TX	155.3400
UNICOM	FM RX/TX	122.8
Air Guard	FM RX/TX	168.6250
		110.9 TT/RT

Label	Latitude	Longitude
Bass Lake Dip Site	46° 35.454'	-114° 17.673'
Carlton Lake Dip Site	46° 41.020'	-114° 13.301'
CMD4 A/C Link	46° 40.910'	-114° 14.318'
DP-10	46° 45.557'	-114° 15.195'
DP-20	46° 45.261'	-114° 13.372'
DP-30	46° 45.217'	-114° 12.477'
DP-40	46° 44.765'	-114° 10.354'
DP-50	46° 44.569'	-114° 9.373'
DP-60	46° 43.971'	-114° 7.506'
DP-70	46° 42.947'	-114° 4.650'
DP-80	46° 41.981'	-114° 6.838'
Duffy Lake Dip Site	46° 38.548'	-114° 15.475'
Earl Tennant Spike Camp	46° 46.453'	-114° 26.065'
H-1	46° 40.910'	-114° 14.301'
H-15	46° 45.599'	-114° 15.166'
H-30	46° 43.470'	-114° 6.378'
H-35	46° 42.464'	-114° 5.956'
H-40	46° 41.918'	-114° 6.700'
Holloway Lake Dip Site	46° 38.157'	-114° 15.777'
ICP	46° 38.456'	-114° 4.552'
Little Carlton Lake Dip Site	46° 40.739'	-114° 12.875'
Mills Lake Dip Site	46° 38.235'	-114° 15.966'
OZ Field	46° 45.511'	-114° 16.783'
OZ Staging Area	46° 45.912'	-114° 16.903'
Stevensville Airport	46° 31.553'	-114° 3.110'

Sources: Esri, HERE, DeLorme, Intermap, increment P Corp., GEBCO, USGS, FAO, NPS, NRCAN, GeoBase, IGN, Kadaster NL, Ordnance Survey, Esri Japan, METI, Esri China