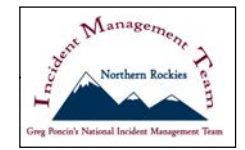
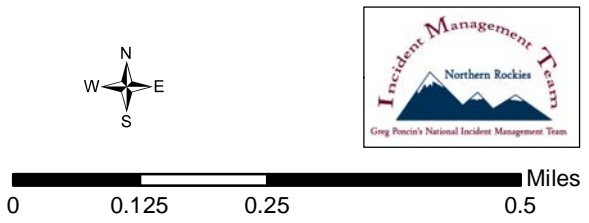


Sources: Esri, HERE, DeLorme, Intermap, increment P Corp., GEBCO, USGS, FAO, NPS, NRCAN, GeoBase, IGN, Kadaster NL, Ordnance Survey, Esri Japan, METI, Esri China (Hong Kong), swisstopo, MapmyIndia, © OpenStreetMap contributors, and the GIS User Community

Lolo Peak Fire
Elk Creek
Structure Protection
 MT-LNF-001288
 July 27, 2017



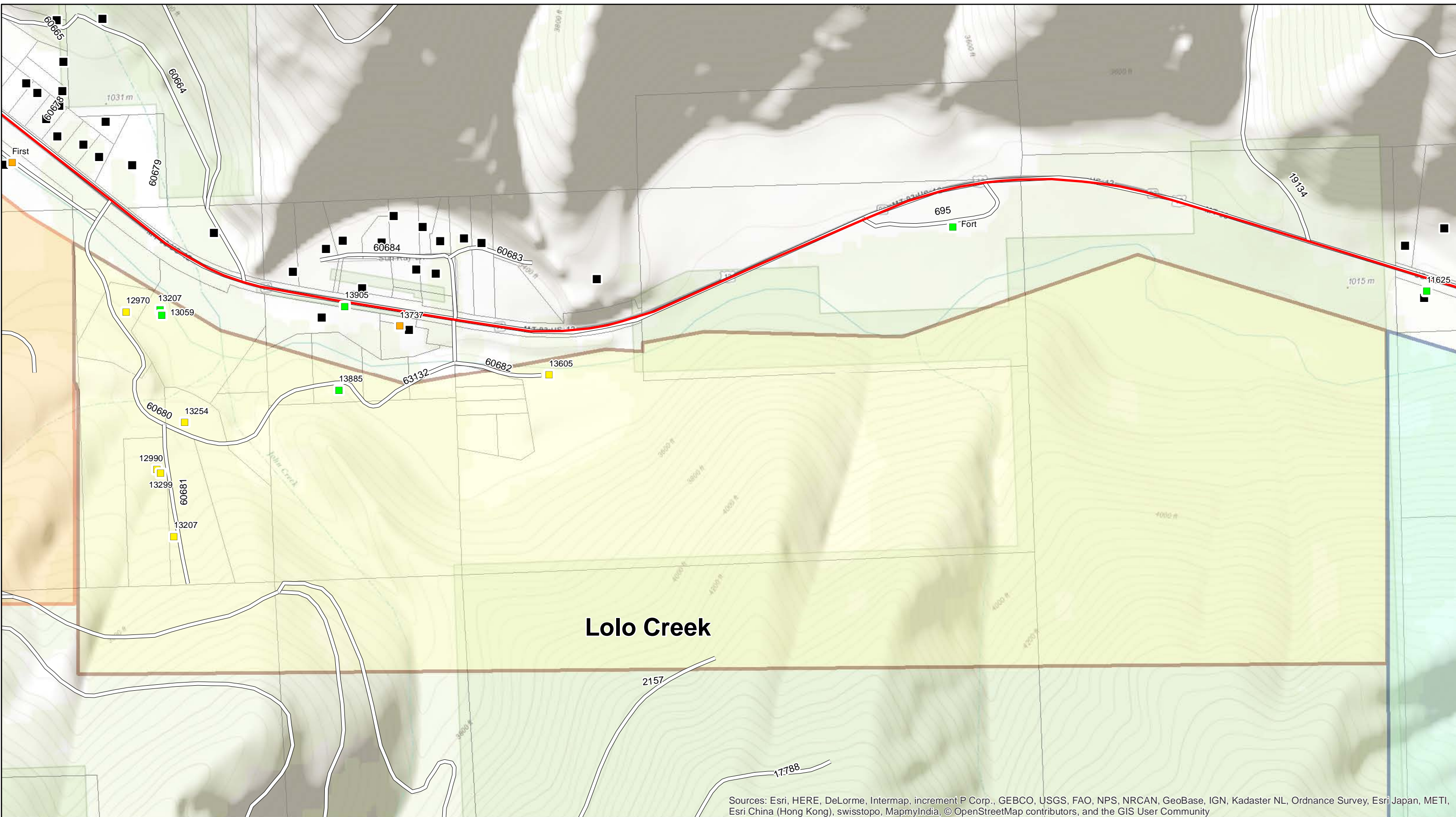
- Other Structures
- ▬▬ Roads
- ▭ Ownership Parcels

- Home Owner Groups**
- ▭ Elk Creek
 - ▭ Mill Creek

- Structure Assessment**
- Defensible, Prep and Hold
 - Defensible, Stand Alone

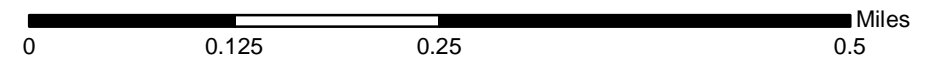
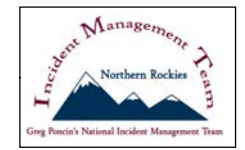
- Non-Defensible, Prep and Leave





Sources: Esri, HERE, DeLorme, Intermap, increment P Corp., GEBCO, USGS, FAO, NPS, NRCAN, GeoBase, IGN, Kadaster NL, Ordnance Survey, Esri Japan, METI, Esri China (Hong Kong), swisstopo, MapmyIndia, © OpenStreetMap contributors, and the GIS User Community

Lolo Peak Fire
Lolo Creek
Structure Protection
 MT-LNF-001288
 July 27, 2017



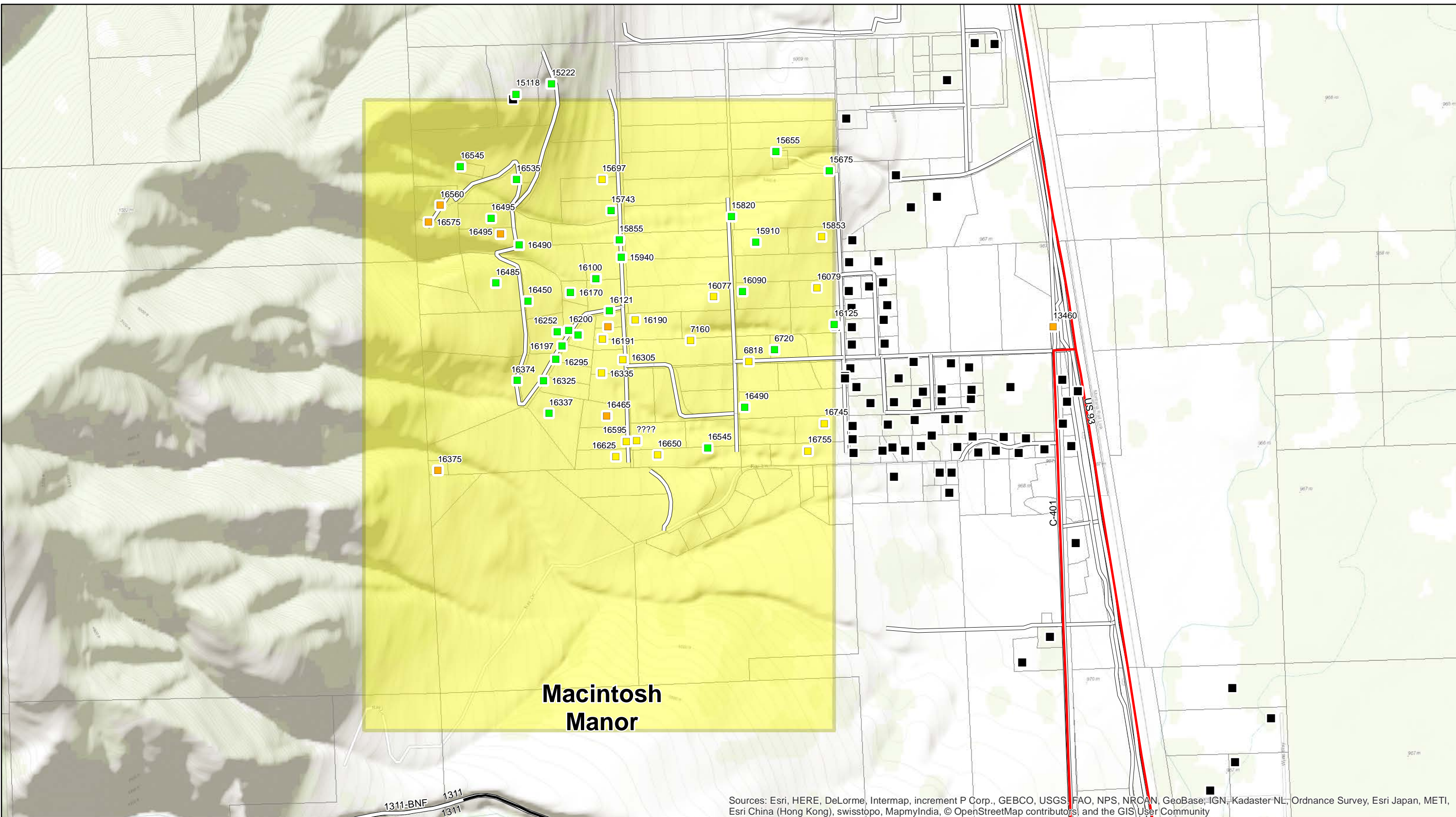
- Other Structures
- Roads
- ▭ Ownership Parcels

- Home Owner Groups**
- ▭ Lolo Creek
 - ▭ Mill Creek

- Traveler's Rest Structure Assessment**
- Defensible, Prep and Hold
 - Defensible, Stand Alone

- Non-Defensible, Prep and Leave



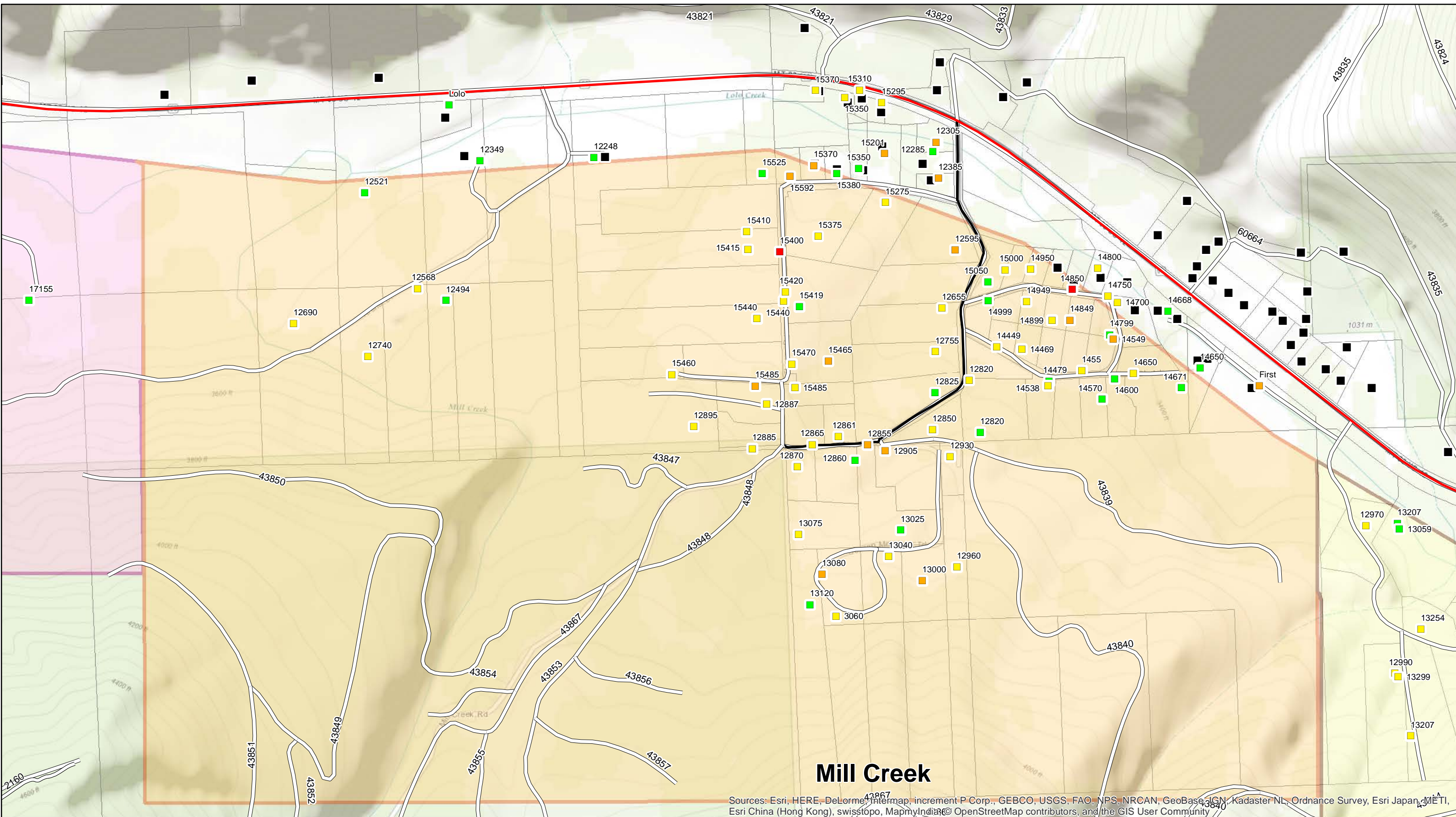


Sources: Esri, HERE, DeLorme, Intermap, increment P Corp., GEBCO, USGS, FAO, NPS, NRCAN, GeoBase, IGN, Kadaster NL, Ordnance Survey, Esri Japan, METI, Esri China (Hong Kong), swisstopo, MapmyIndia, © OpenStreetMap contributors, and the GIS User Community

**Lolo Peak Fire
Macintosh Manor
Structure Protection**
MT-LNF-001288
July 27, 2017

- Other Structures
- ▬ Roads
- ▭ Ownership Parcels
- Home Owner Groups
- ▭ Macintosh Manor
- Structure Assessment
- Defensible, Prep and Hold
- Defensible, Stand Alone
- Non-Defensible, Prep and Leave

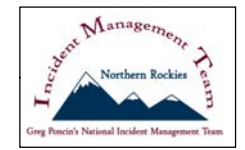




Sources: Esri, HERE, DeLorme, Intermap, increment P Corp., GEBCO, USGS, FAO, NPS, NRCAN, GeoBase, IGN, Kadaster NL, Ordnance Survey, Esri Japan, METI, Esri China (Hong Kong), swisstopo, MapmyIndia, © OpenStreetMap contributors, and the GIS User Community

**Lolo Peak Fire
Mill Creek
Structure Protection**
MT-LNF-001288
July 27, 2017

0 0.125 0.25 0.5 Miles



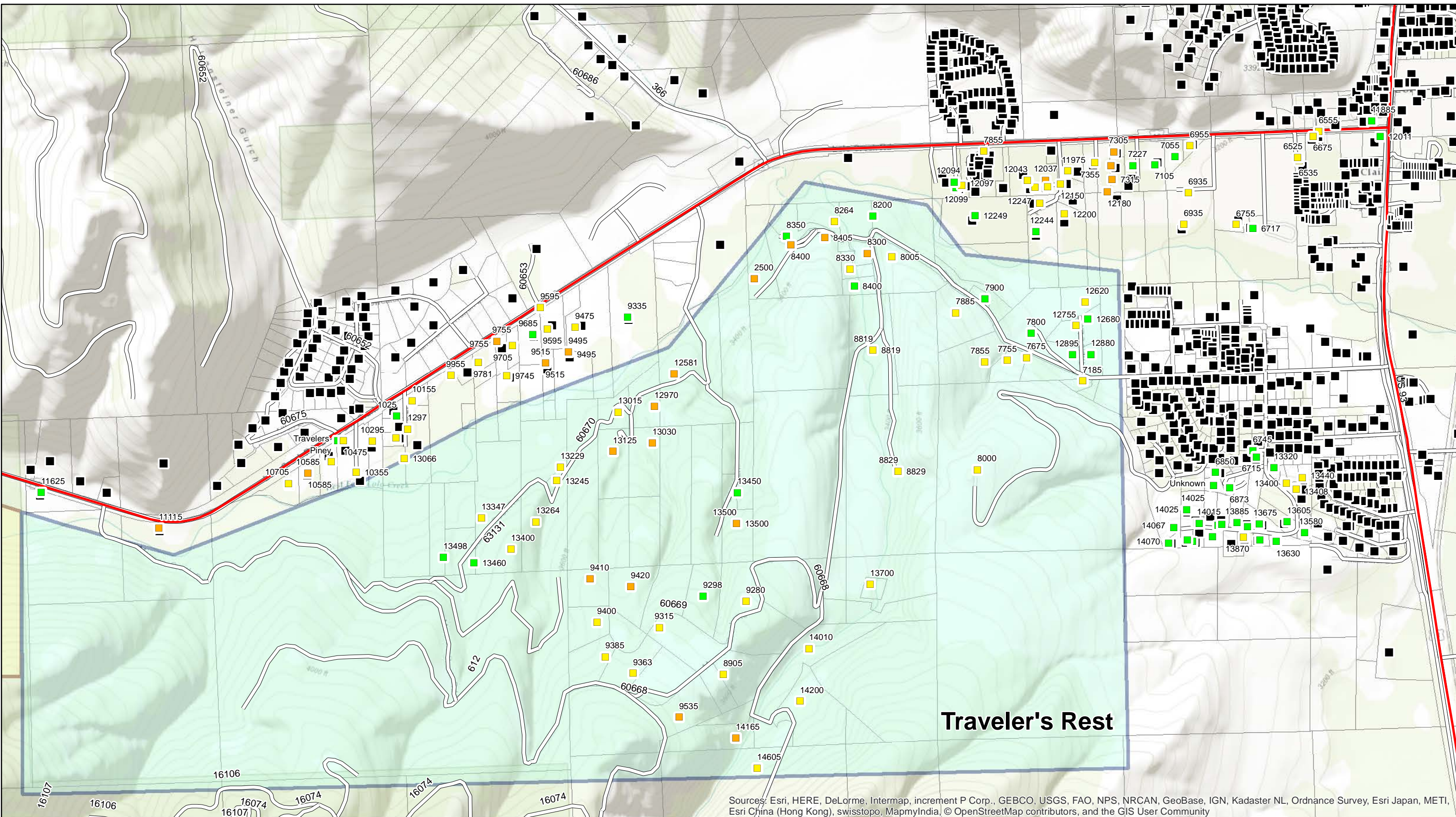
- Other Structures
- Roads
- Ownership Parcels

- Home Owner Groups**
- Elk Creek
 - Lolo Creek

- Structure Assessment**
- Mill Creek
 - Defensible, Prep and Hold
 - Defensible, Stand Alone

- Non-Defensible, Prep and Leave
- Non-Defensible, Rescue, Drive By





Sources: Esri, HERE, DeLorme, Intermap, increment P Corp., GEBCO, USGS, FAO, NPS, NRCAN, GeoBase, IGN, Kadaster NL, Ordnance Survey, Esri Japan, METI, Esri China (Hong Kong), swisstopo, MapmyIndia, © OpenStreetMap contributors, and the GIS User Community

**Lolo Peak Fire
Traveler's Rest
Structure Protection**
MT-LNF-001288
July 27, 2017

0 0.125 0.25 0.5 Miles



- Other Structures
- Roads
- ▭ Ownership Parcels
- ▭ Home Owner Groups
 - ▭ Lolo Creek
 - ▭ Traveler's Rest
- Structure Assessment
 - Defensible, Prep and Hold
 - Defensible, Stand Alone
- Non-Defensible, Prep and Leave

