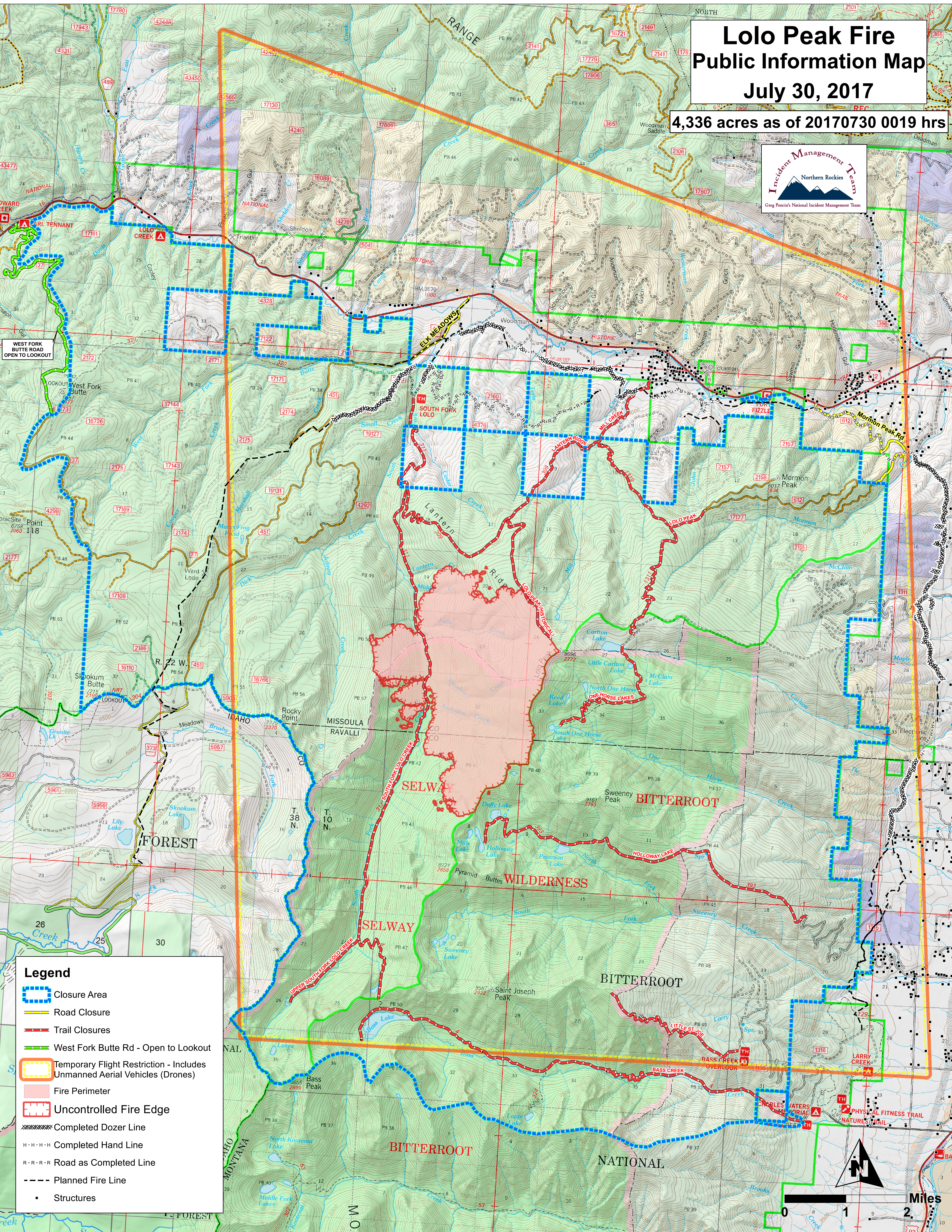


# Lolo Peak Fire Public Information Map July 30, 2017

4,336 acres as of 20170730 0019 hrs



WEST FORK BUTTE ROAD OPEN TO LOOKOUT

- ### Legend
- Closure Area
  - Road Closure
  - Trail Closures
  - West Fork Butte Rd - Open to Lookout
  - Temporary Flight Restriction - Includes Unmanned Aerial Vehicles (Drones)
  - Fire Perimeter
  - Uncontrolled Fire Edge
  - Completed Dozer Line
  - Completed Hand Line
  - Road as Completed Line
  - Planned Fire Line
  - Structures

