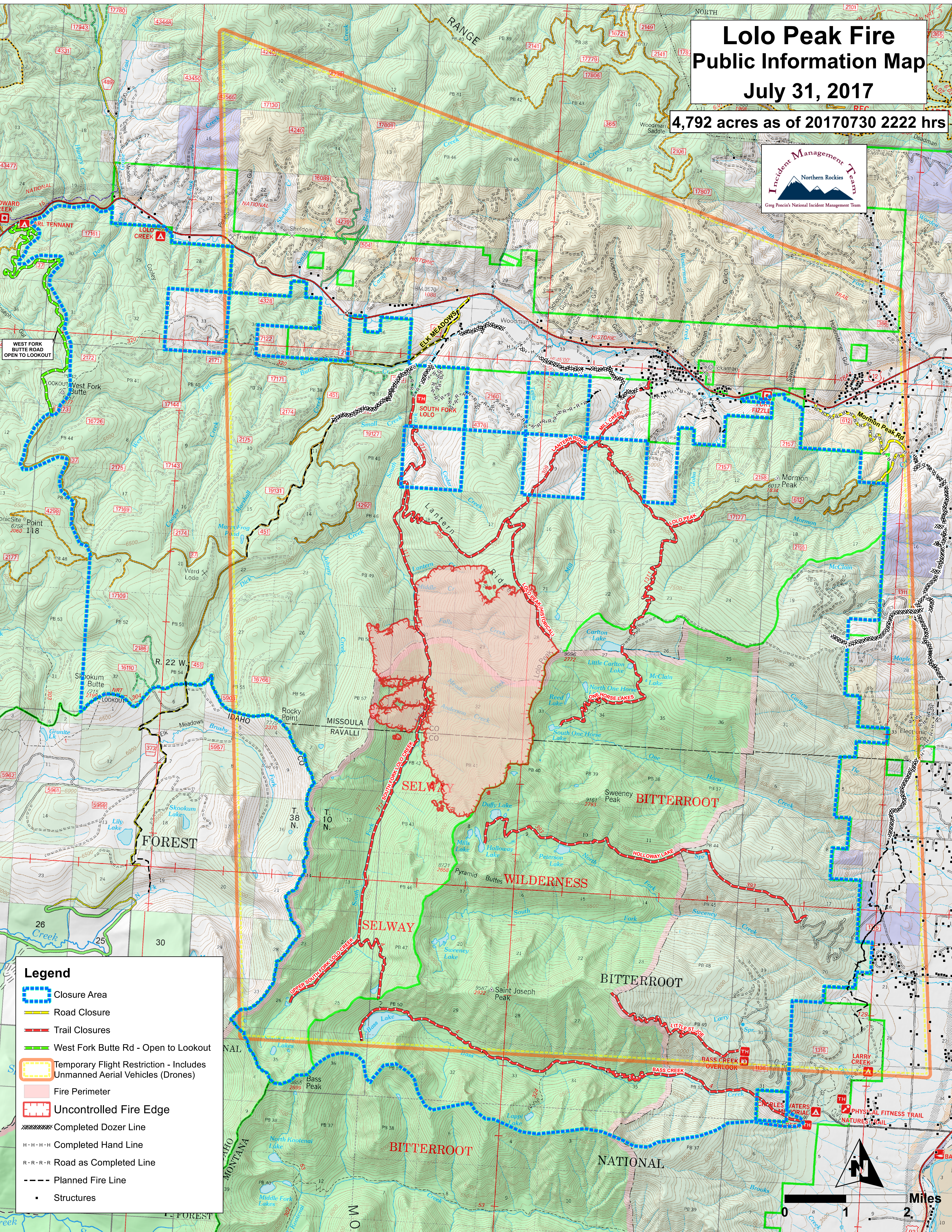


Lolo Peak Fire Public Information Map July 31, 2017

4,792 acres as of 20170730 2222 hrs



WEST FORK BUTTE ROAD OPEN TO LOOKOUT

- ### Legend
- Closure Area
 - Road Closure
 - Trail Closures
 - West Fork Butte Rd - Open to Lookout
 - Temporary Flight Restriction - Includes Unmanned Aerial Vehicles (Drones)
 - Fire Perimeter
 - Uncontrolled Fire Edge
 - Completed Dozer Line
 - Completed Hand Line
 - Road as Completed Line
 - Planned Fire Line
 - Structures

