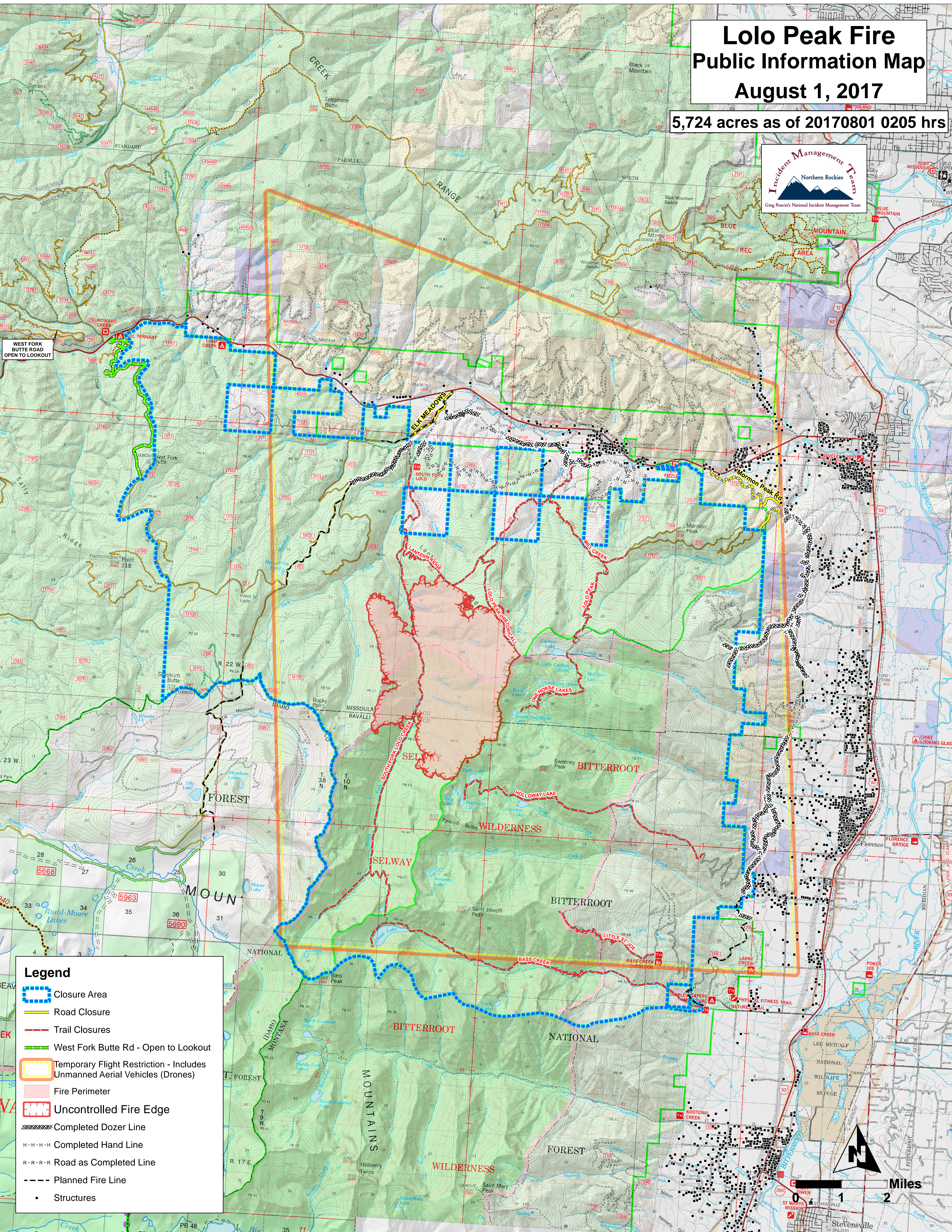
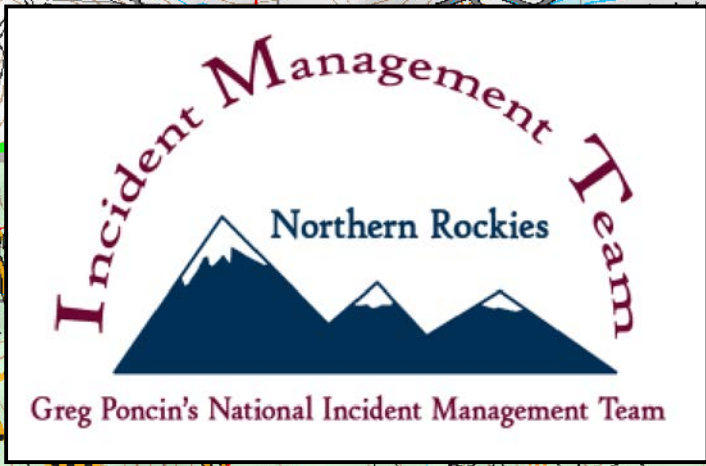


Lolo Peak Fire Public Information Map August 1, 2017

5,724 acres as of 20170801 0205 hrs



WEST FORK BUTTE ROAD OPEN TO LOOKOUT

Legend

- Closure Area
- Road Closure
- Trail Closures
- West Fork Butte Rd - Open to Lookout
- Temporary Flight Restriction - Includes Unmanned Aerial Vehicles (Drones)
- Fire Perimeter
- Uncontrolled Fire Edge
- Completed Dozer Line
- Completed Hand Line
- Road as Completed Line
- Planned Fire Line
- Structures

