








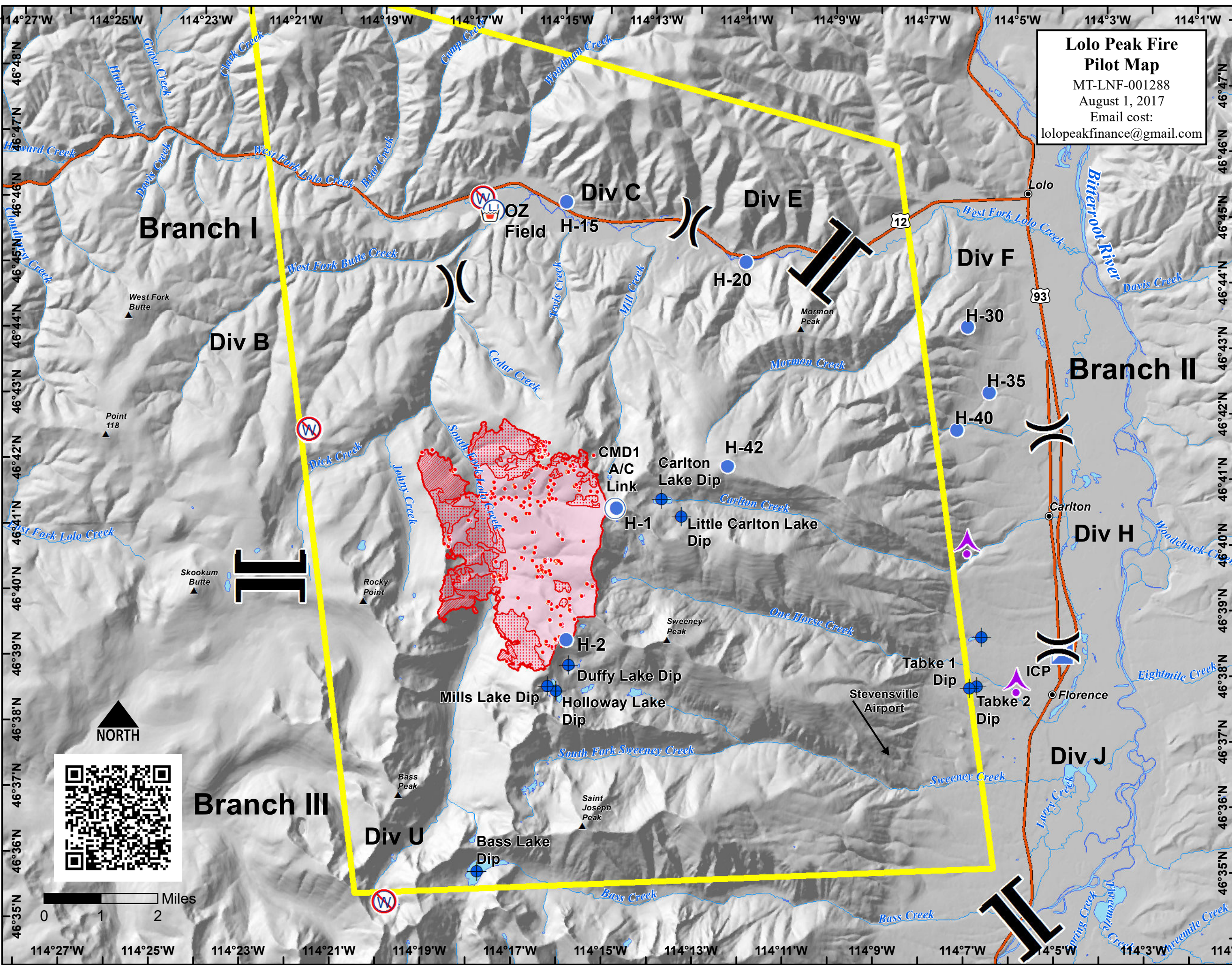
5,724 acres
as of 20170801 @ 0205

**Lolo Peak Fire
Pilot Map**
MT-LNF-001288
August 1, 2017
Email cost:
lolopeakfinance@gmail.com

-  Aerial Hazard
-  Dip Site
-  Helibase
-  Helispot
-  ICP
-  Repeater
-  Retardant/Mud Pit
-  Restricted Water Source
-  Division Break
-  TFR
-  Fire Perimeter
-  IR Isolated Heat Sources
-  IR Intense Heat
-  IR Scattered Heat

Frequencies	Type	Freq.
TFR/Fixed-Wing AA	AM	128.6500
Rotorwing	AM	123.6000
A/G Primary	FM TX/RX	168.6375
A/G Secondary	FM TX/RX	164.9500
TOLC Deck	FM RX/TX	163.1000
Tan A/G Life Flight	FM RX/TX	155.3400N
White A/G Hospitals		155.280N
<i>use when talking direct to Hospital</i>		
Air Guard	FM RX/TX	168.6250
		110.9 TT/RT

Label	Latitude	Longitude
ICP	46° 38.456'	-114° 4.552'
H-1	46° 40.910'	-114° 14.301'
H-2	46° 38.930'	-114° 15.513'
H-15	46° 45.599'	-114° 15.166'
H-20	46° 44.594'	-114° 11.236'
H-30	46° 43.470'	-114° 6.378'
H-35	46° 42.464'	-114° 5.956'
H-40	46° 41.918'	-114° 6.700'
H-42	46° 41.483'	-114° 11.814'
Bass Lake Dip	46° 35.454'	-114° 17.673'
Carlton Lake Dip	46° 41.020'	-114° 13.301'
Duffy Lake Dip	46° 38.548'	-114° 15.475'
Holloway Lake Dip	46° 38.157'	-114° 15.777'
Little Carlton Lake Dip	46° 40.739'	-114° 12.875'
Mills Lake Dip	46° 38.235'	-114° 15.966'
Tabke 1 Dip	46° 37.975'	-114° 6.639'
Tabke 2 Dip	46° 37.996'	-114° 6.481'
CMD1 A/C Link	46° 40.910'	-114° 14.318'
OZ Field Helibase	46° 45.511'	-114° 16.783'
Stevensville Airport	46° 31.553'	-114° 3.110'



114°27'W 114°25'W 114°23'W 114°21'W 114°19'W 114°17'W 114°15'W 114°13'W 114°11'W 114°9'W 114°7'W 114°5'W 114°3'W 114°1'W

46°48'N 46°47'N 46°46'N 46°45'N 46°44'N 46°43'N 46°42'N 46°41'N 46°40'N 46°39'N 46°38'N 46°37'N 46°36'N 46°35'N

114°27'W 114°25'W 114°23'W 114°21'W 114°19'W 114°17'W 114°15'W 114°13'W 114°11'W 114°9'W 114°7'W 114°5'W 114°3'W 114°1'W