

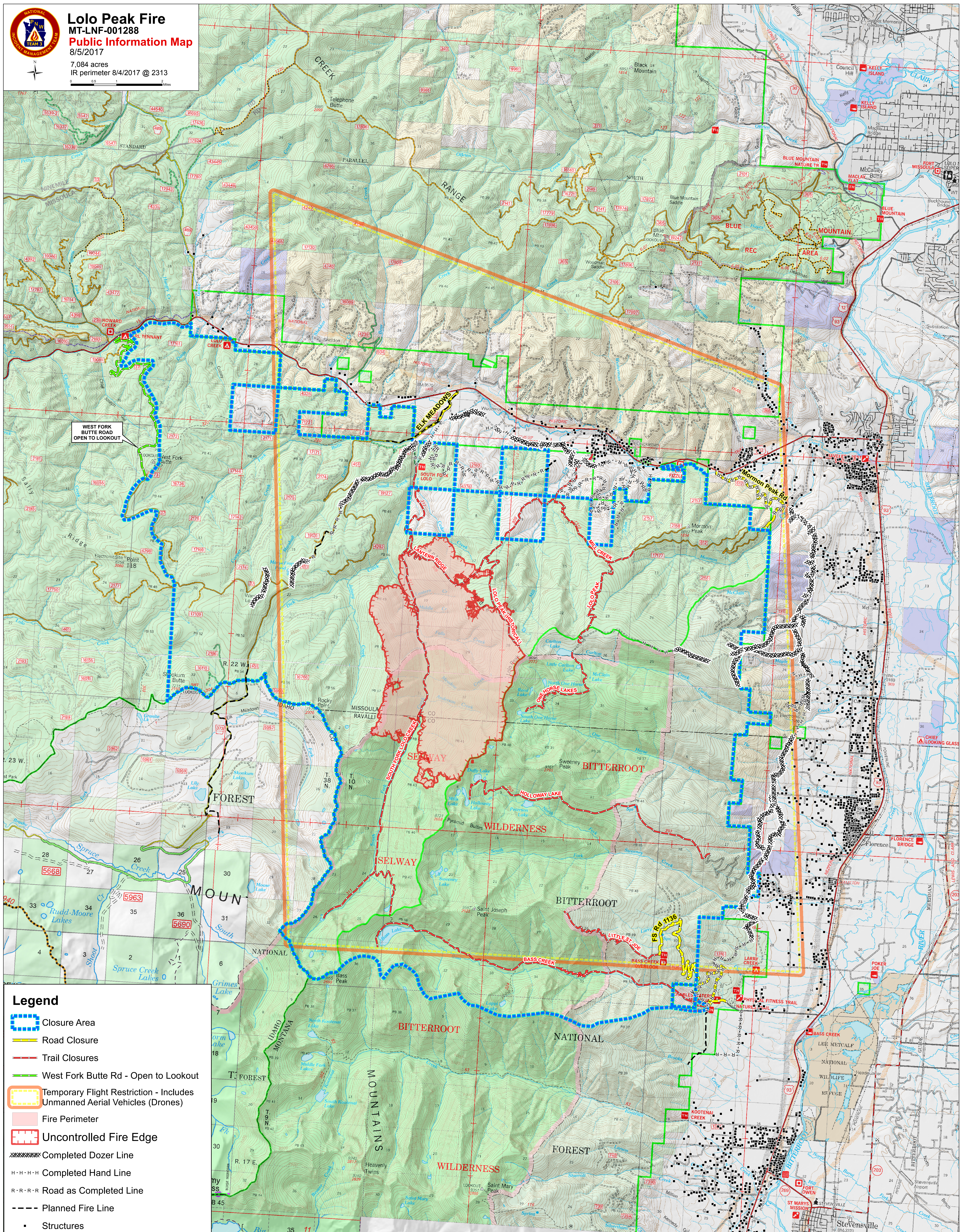


# Lolo Peak Fire MT-LNF-001288 Public Information Map

7,084 acres  
IR perimeter 8/4/2017 @ 2313



0 0.5 1 2 Miles



### Legend

- Closure Area
- Road Closure
- Trail Closures
- West Fork Butte Rd - Open to Lookout
- Temporary Flight Restriction - Includes Unmanned Aerial Vehicles (Drones)
- Fire Perimeter
- Uncontrolled Fire Edge
- Completed Dozer Line
- Completed Hand Line
- Road as Completed Line
- Planned Fire Line
- Structures