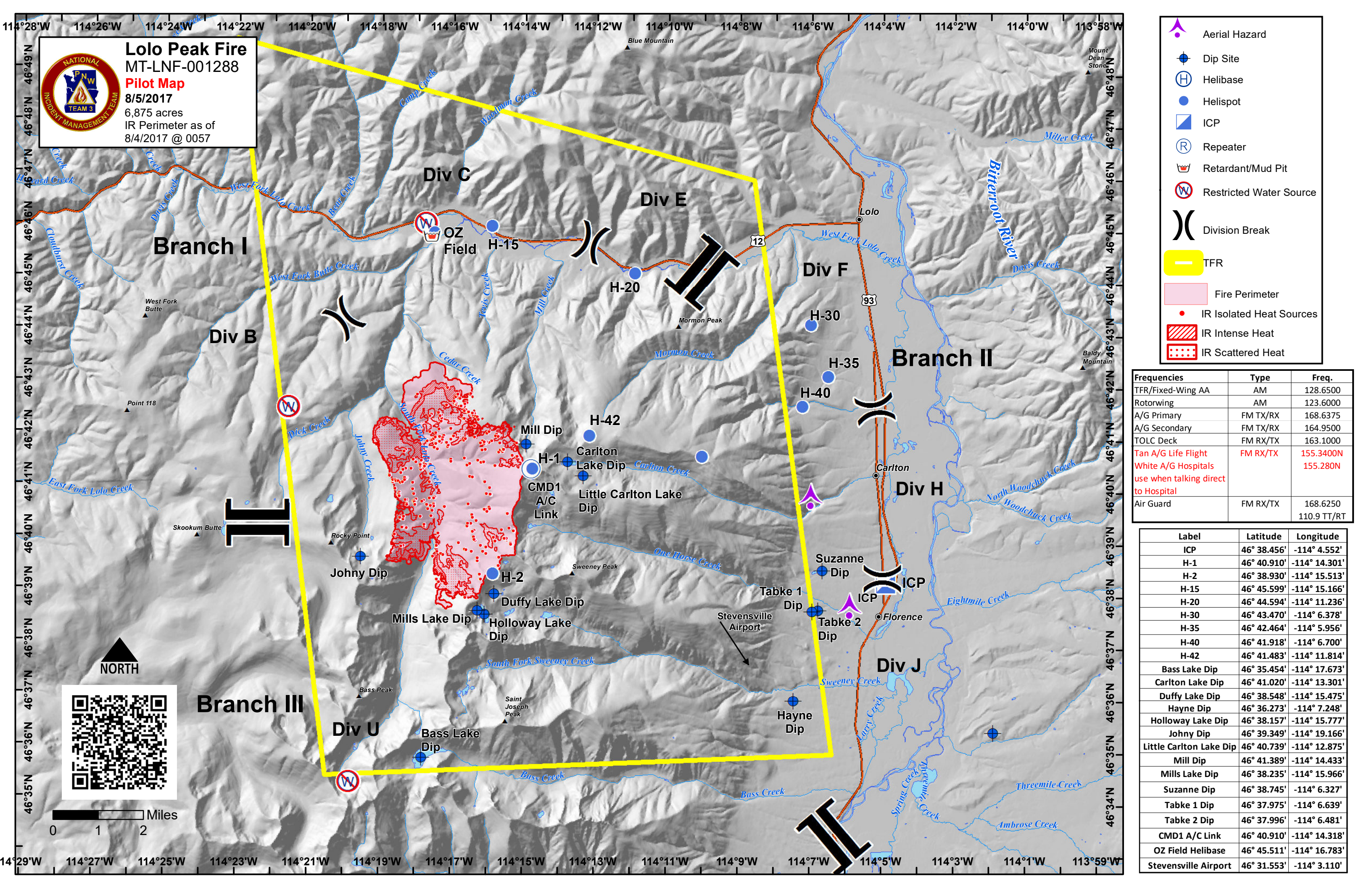


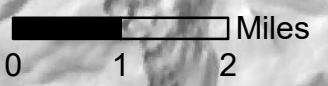
Lolo Peak Fire
 MT-LNF-001288
Pilot Map
 8/5/2017
 6,875 acres
 IR Perimeter as of
 8/4/2017 @ 0057



- Aerial Hazard
- Dip Site
- Helibase
- Helispot
- ICP
- Repeater
- Retardant/Mud Pit
- Restricted Water Source
- Division Break
- TFR
- Fire Perimeter
- IR Isolated Heat Sources
- IR Intense Heat
- IR Scattered Heat

Frequencies	Type	Freq.
TFR/Fixed-Wing AA	AM	128.6500
Rotorwing	AM	123.6000
A/G Primary	FM TX/RX	168.6375
A/G Secondary	FM TX/RX	164.9500
TOLC Deck	FM RX/TX	163.1000
Tan A/G Life Flight	FM RX/TX	155.3400N
White A/G Hospitals		155.280N
use when talking direct to Hospital		
Air Guard	FM RX/TX	168.6250
		110.9 TT/RT

Label	Latitude	Longitude
ICP	46° 38.456'	-114° 4.552'
H-1	46° 40.910'	-114° 14.301'
H-2	46° 38.930'	-114° 15.513'
H-15	46° 45.599'	-114° 15.166'
H-20	46° 44.594'	-114° 11.236'
H-30	46° 43.470'	-114° 6.378'
H-35	46° 42.464'	-114° 5.956'
H-40	46° 41.918'	-114° 6.700'
H-42	46° 41.483'	-114° 11.814'
Bass Lake Dip	46° 35.454'	-114° 17.673'
Carlton Lake Dip	46° 41.020'	-114° 13.301'
Duffy Lake Dip	46° 38.548'	-114° 15.475'
Hayne Dip	46° 36.273'	-114° 7.248'
Holloway Lake Dip	46° 38.157'	-114° 15.777'
Johny Dip	46° 39.349'	-114° 19.166'
Little Carlton Lake Dip	46° 40.739'	-114° 12.875'
Mill Dip	46° 41.389'	-114° 14.433'
Mills Lake Dip	46° 38.235'	-114° 15.966'
Suzanne Dip	46° 38.745'	-114° 6.327'
Tabke 1 Dip	46° 37.975'	-114° 6.639'
Tabke 2 Dip	46° 37.996'	-114° 6.481'
CMD1 A/C Link	46° 40.910'	-114° 14.318'
OZ Field Helibase	46° 45.511'	-114° 16.783'
Stevensville Airport	46° 31.553'	-114° 3.110'



NORTH