



Lolo Peak Fire

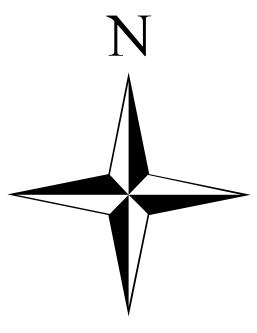
MT-LNP-001288

Briefing Map

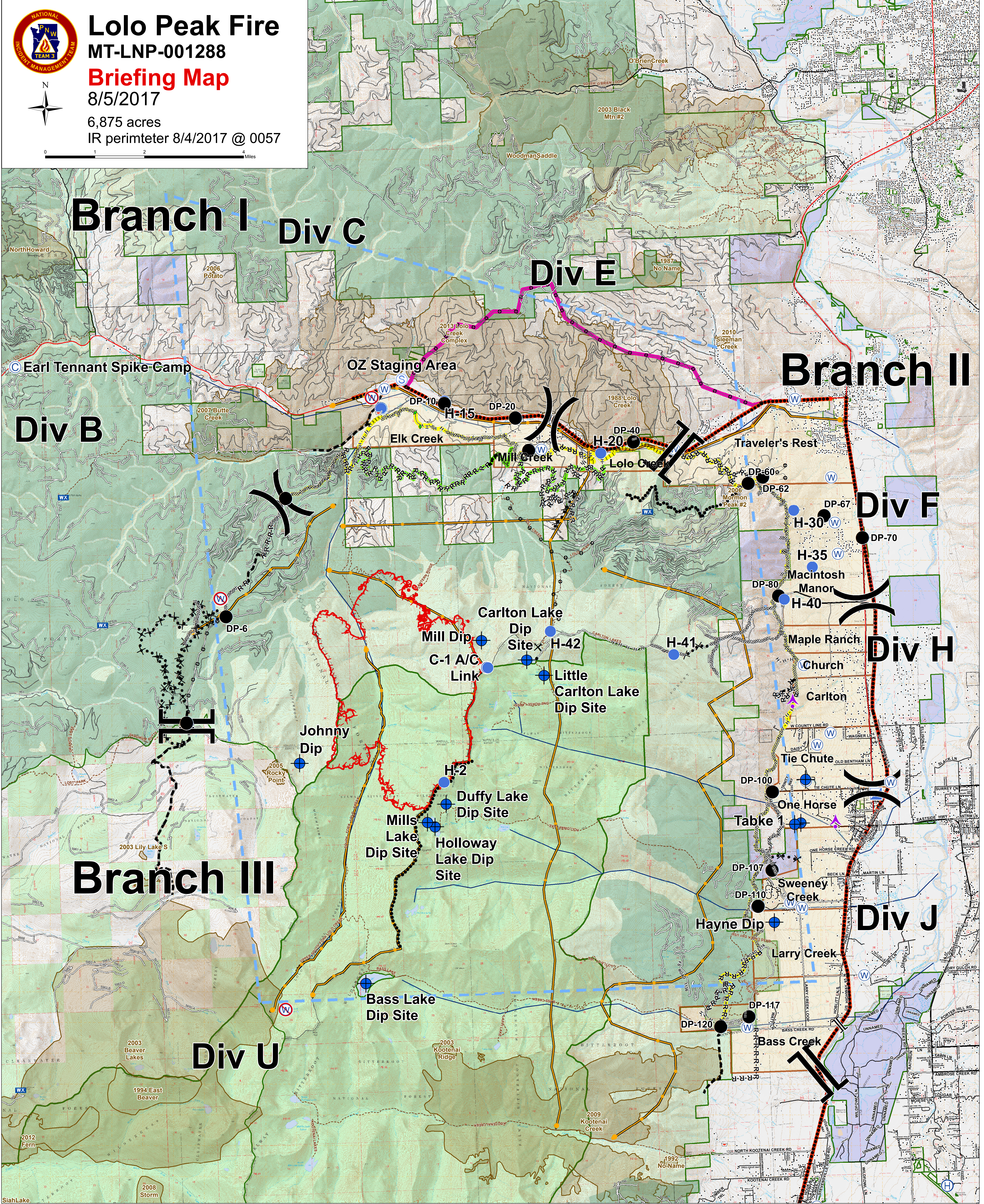
8/5/2017

6,875 acres

IR perimeter 8/4/2017 @ 0057



0 1 2 4 Miles



Drop Point	Helibase	Staging Area	Completed Dozer Line	Planned Secondary Line	Management Action Points	Primary Proposed Line	Fire History 1980 - Present
Helispot	Unimproved Landing Area	Water Source	Completed Hand Line	Aerial Retardant Drop	Highway	Alternate Proposed Line	Administrative Forest
Dip Site	ICP	Restricted Water Source	R-R-R Road as Completed Line	Ridge/Geographic Feature	County	Trails	Wilderness Study Area
Aerial Hazard	Mobile Weather Unit	Division Break	Completed Plow Line	Other	Local Roads	S_Triage_0725pm	Structures
Camp	Repeater	Branch Break	Proposed Burnout	SuppData_FireEdgeStatusLines0	Contingency	Evacuation Zones	VAR Bull Trout Streams
Retardant/Mud Pit	Proposed Dozer Line	Fire Break Planned or Incomplete	Planned Fire Line	Feature Category (Line Type)	Emergency	VAR Timber	
	TFR			Uncontrolled Fire Edge			