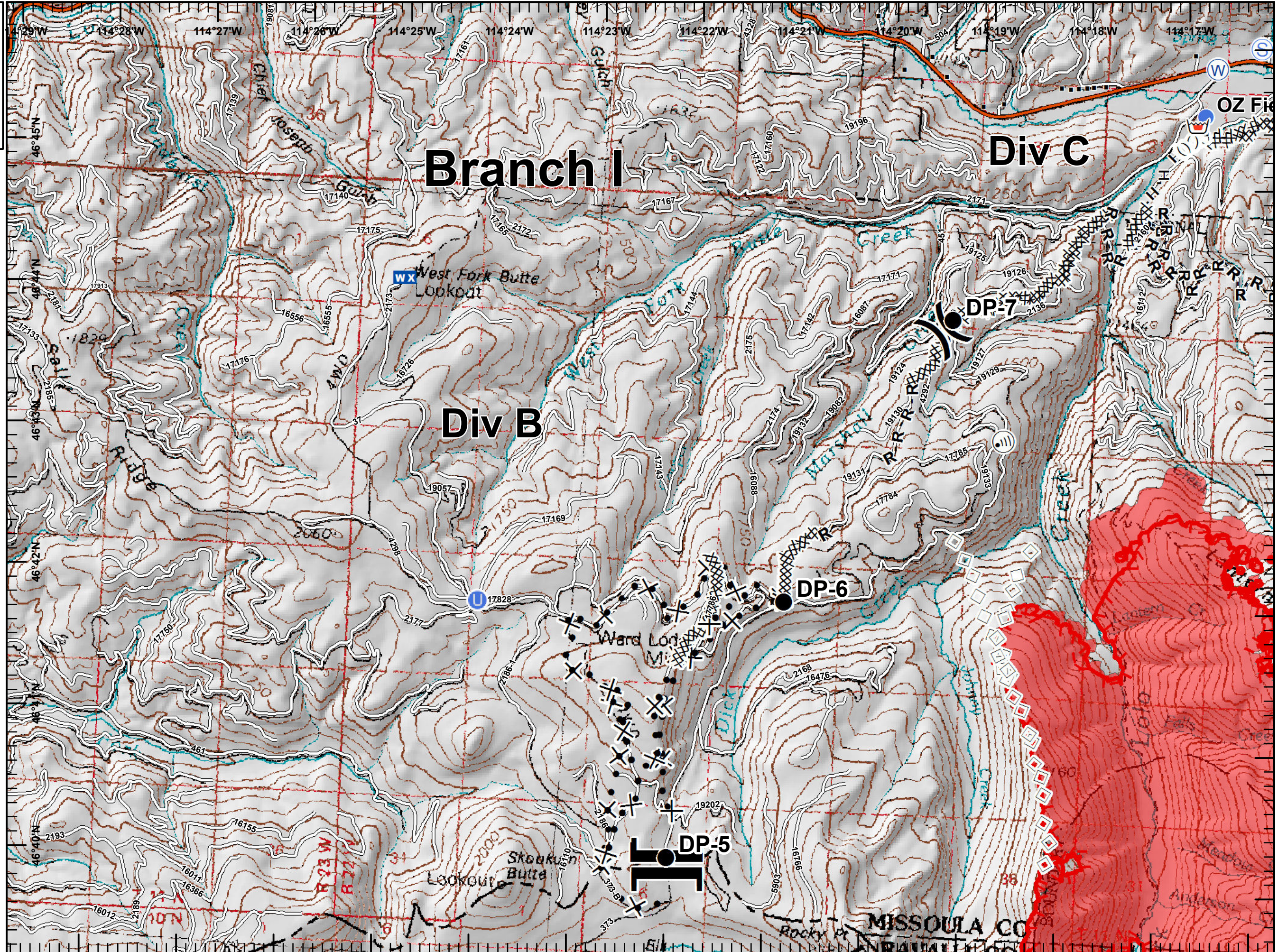
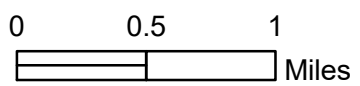




Lolo Peak Fire
 MT-LNF-001288
IAP Map, Page 1
 8/5/2017

6,875 acres
 RP Perimeter as of 8/4/2017 @ 0057

- Drop Point
- U Unimproved Landing Area
- Helispot
- Ⓜ Internet Access
- WX Mobile Weather Unit
- Retardant/Mud Pit
- Ⓢ Staging Area
- W Water Source
-) Division Break
- || Branch Break
- Structures
- XXXXX Completed Dozer Line
- H - H Completed Hand Line
- R - R Road as Completed Line
- X ● Proposed Dozer Line
- Aerial Retardant Drop
- (()) Ridge/Geographic Feature
- Uncontrolled Fire Edge
- Interstate and Highways
- Roads
- Wildfire Daily Fire Perimeter



MISSOULA CO



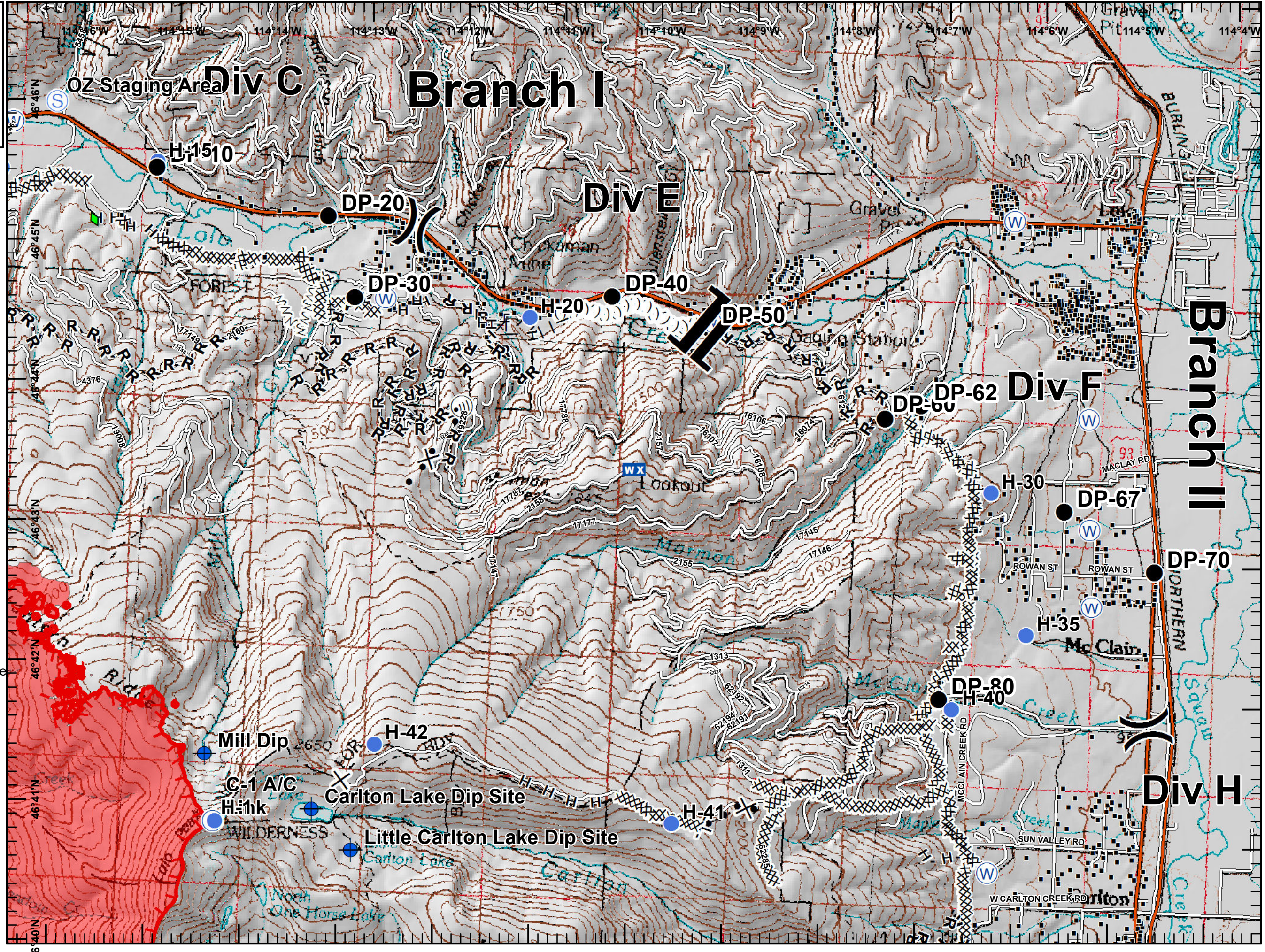
Lolo Peak Fire
 MT-LNF-001288
IAP Map, Page 2
 8/5/2017

6,875 acres
 RP Perimeter as of 8/4/2017 @ 0057

- Dip Site
- Drop Point
- Helispot
- Internet Access
- Mobile Weather Unit
- Repeater
- Retardant/Mud Pit
- Staging Area
- Water Source
- Division Break
- Branch Break
- Structures
- Completed Dozer Line
- Completed Hand Line
- Road as Completed Line
- Completed Plow Line
- Proposed Burnout
- Proposed Dozer Line
- Fire Break Planned or Incomplete
- Ridge/Geographic Feature
- Uncontrolled Fire Edge
- Interstate and Highways
- Roads
- Wildfire Daily Fire Perimeter



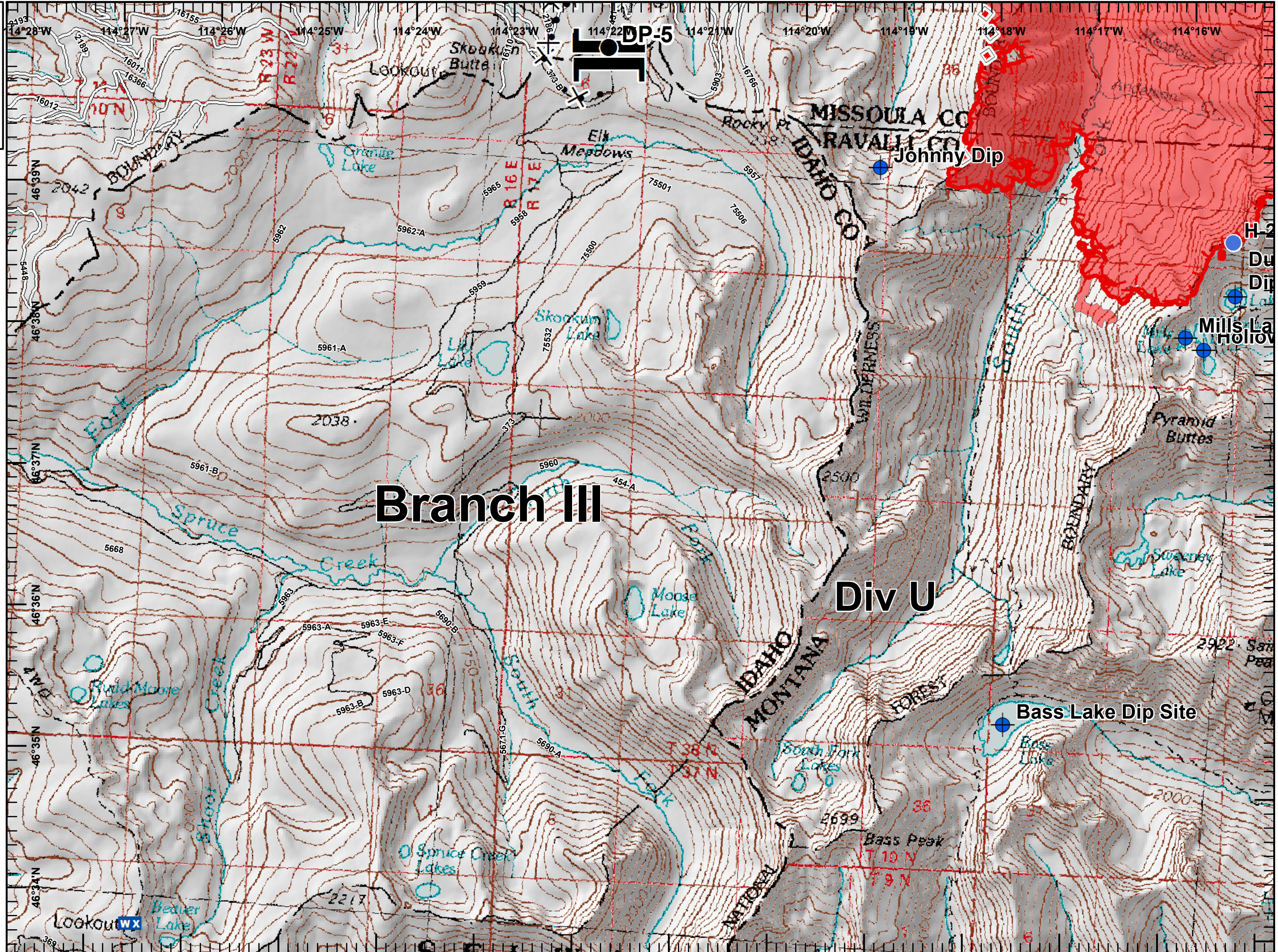
0 0.5 1
 Miles



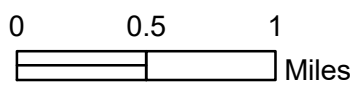


Lolo Peak Fire
 MT-LNF-001288
 IAP Map, Page 3
 8/5/2017

6,875 acres
 RP Perimeter as of 8/4/2017 @ 0057



- Dip Site
- Drop Point
- Helispot
- Mobile Weather Unit
- Branch Break
- Proposed Dozer Line
- Aerial Retardant Drop
- Uncontrolled Fire Edge
- Roads
- Wildfire Daily Fire Perimeter





Lolo Peak Fire
 MT-LNF-001288
IAP Map, Page 4
 8/5/2017

6,875 acres
 RP Perimeter as of 8/4/2017 @ 0057

- Aerial Hazard
- Dip Site
- Drop Point
- ICP
- Water Source
- Division Break
- Structures
- Completed Dozer Line
- H - H Completed Hand Line
- R - R Road as Completed Line
- Proposed Dozer Line
- Fire Break Planned or Incomplete
- Uncontrolled Fire Edge
- Interstate and Highways
- Roads
- Wildfire Daily Fire Perimeter



0 0.5 1
 Miles

