



# Lolo Peak Fire

MT-LNF-001288

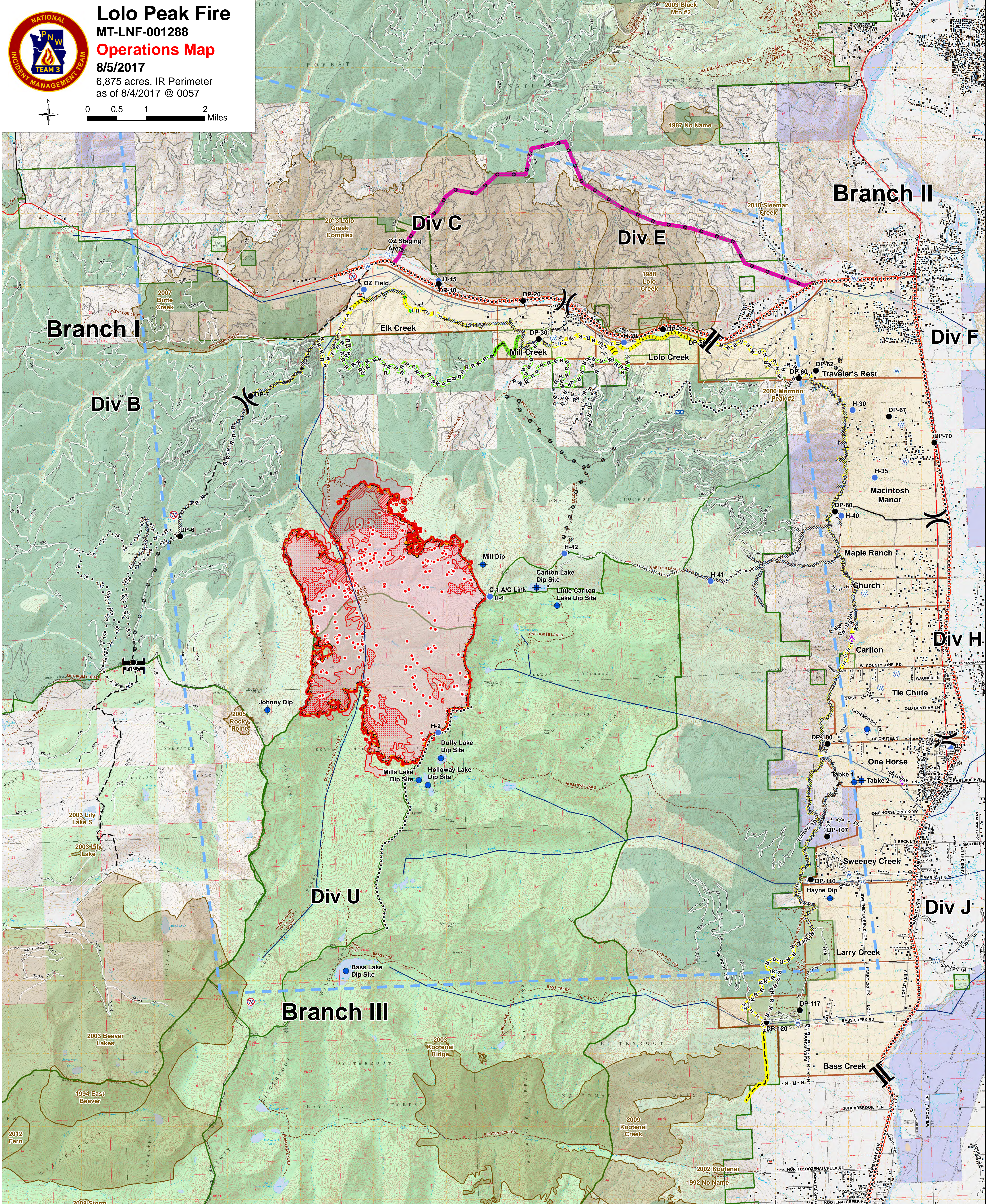
## Operations Map

8/5/2017

6,875 acres, IR Perimeter  
as of 8/4/2017 @ 0057



0 0.5 1 2 Miles



Structures	Retardant/Mud Pit	Branch Break	Fire Break Planned or Incomplete	County	VAR Timber
Aerial Hazard	Staging Area	Completed Dozer Line	Planned Fire Line	Forest Service System Roads	Evacuation Zones
Dip Site	Water Source	Completed Hand Line	Planned Secondary Line	Other Forest Roads	TFR
Drop Point	Restricted Water Source	Road as Completed Line	Aerial Retardant Drop	Contingency Line	Wildfire Daily Fire Perimeter
Helispot	Division Break	Other	Ridge/Geographic Feature	Emergency Line	Fire History 1980 - Present
ICP	Division Break	Completed Plow Line	Management Action Points	Primary Line	Administrative Forest
Internet Access	Division Break	Proposed Burnout	Uncontrolled Fire Edge	Alternate Line	Wilderness
Mobile Weather Unit	Division Break	Proposed Dozer Line	Interstate and Highways	Trails	State
Repeater				VAR Bull Trout Streams	US Forest Service

IR data as of 8/4/2017 at 0057 hrs.  
 IR Isolated Heat Sources  
 IR Intense Heat  
 IR Scattered Heat