



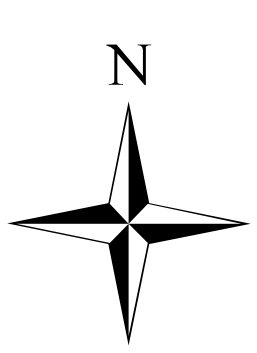
Lolo Peak Fire

MT-LNP-001288

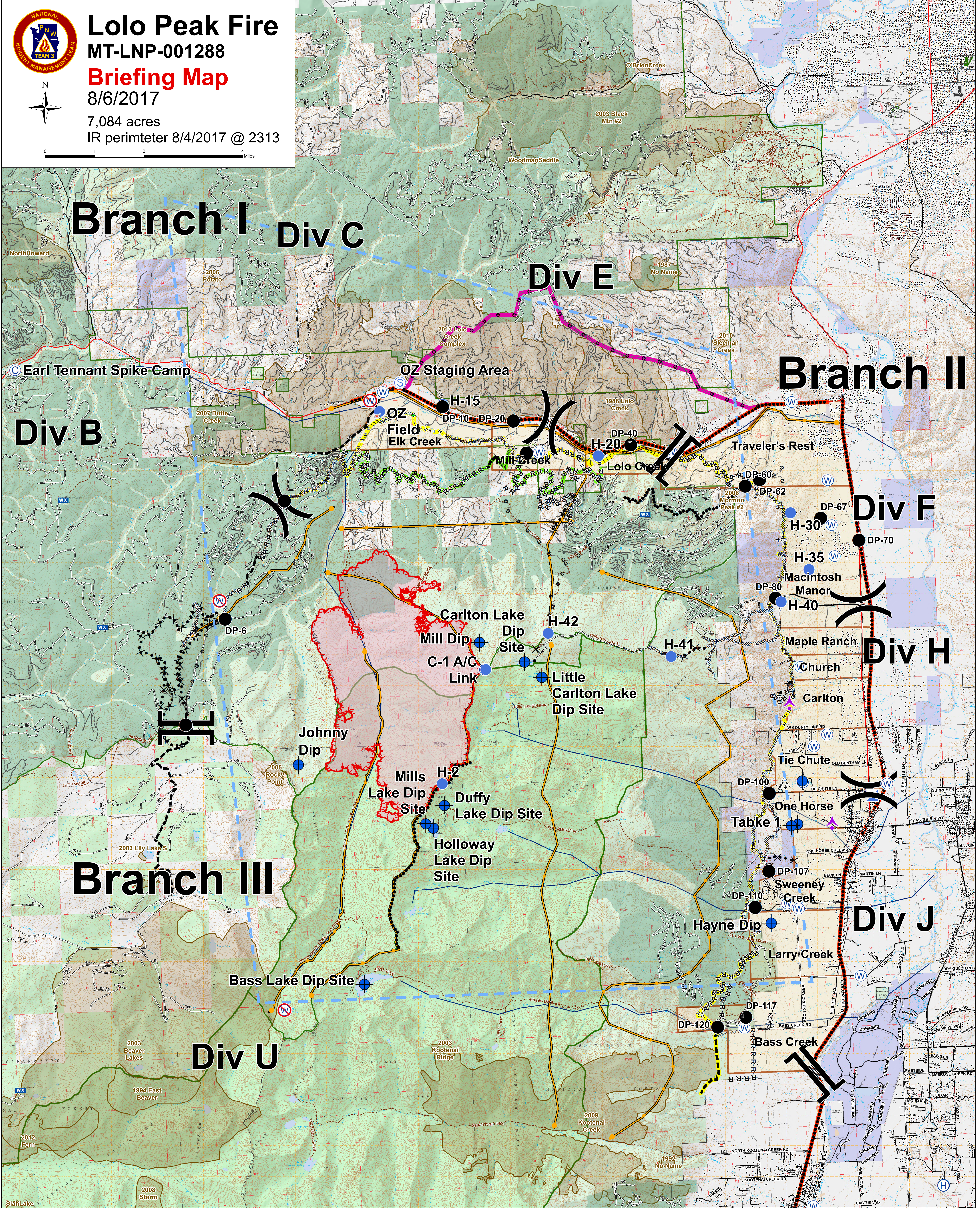
Briefing Map

8/6/2017

7,084 acres
IR perimeter 8/4/2017 @ 2313



0 1 2 4 Miles



Drop Point	Camp	Repeater	Division Break	R-R-R Road as Completed Line	Aerial Retardant Drop	Primary Proposed Line	Evacuation Zones
Helispot	Helibase	Retardant/Mud Pit	Branch Break	Completed Plow Line	Ridge/Geographic Feature	Alternate Proposed Line	Values At Risk Bull Trout Streams
Dip Site	Unimproved Landing Area	Staging Area	Branch Break Structures	Proposed Burnout	Other	Highway	Values At Risk Timber
Aerial Hazard	ICP	Water Source	Proposed Dozer Line	Completed Dozer Line	Management Action Points	County	Timber Inv Mgmt
Mobile Weather Unit	Restricted Water Source	Completed Hand Line	Fire Break Planned or Incomplete	Planned Fire Line	Uncontrolled Fire Edge	Local Roads	Fire History 1980 - Present
		Planned Secondary Line	Contingency	Planned Secondary Line	Emergency	Trails	Administrative Forest
						TFR	Wilderness Study Area

