
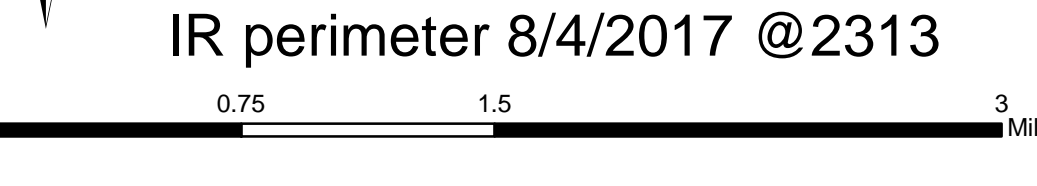
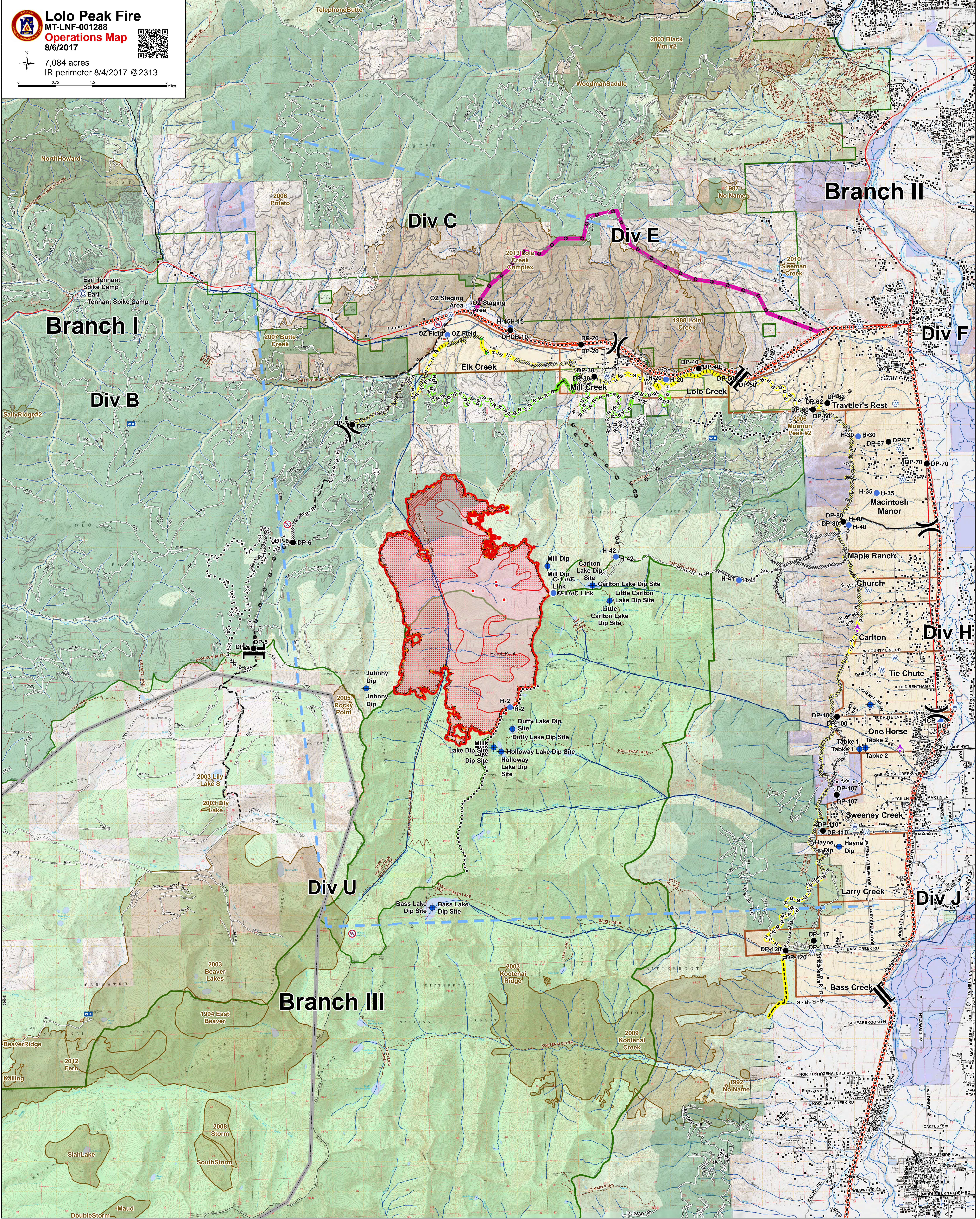


**Lolo Peak Fire**  
 MT-LNF-001288  
**Operations Map**  
 8/6/2017

7,084 acres  
 IR perimeter 8/4/2017 @2313

Aerial Hazard	ICP	Staging Area	Trails	Completed Plow Line	Planned Secondary Line	Management Action Points	Values at Risk Bull Trout Streams	Primary Line
Camp	Internet Access	Water Source	Streams	Proposed Burnout	Aerial Retardant Drop	Evacuation Zones	Values at Risk Timber	Alternate Line
Dip Site	Mobile Weather Unit	Restricted Water Source	Completed Dozer Line	Proposed Dozer Line	Ridge/Geographic Feature	TFR	Timber Inv Mgmt	Contingency Line
Drop Point	Repeater	Division Break	Completed Hand Line	Fire Break Planned or Incomplete	Other	IR Isolated Heat Sources	Fire History 1980 - Present	Emergency Line
Helispot	Retardant/Mud Pit	Branch Break	Road as Completed Line	Planned Fire Line	Uncontrolled Fire Edge	IR Intense Heat	Forest Boundary	State Boundary
		Structures			Wildfire Daily Fire Perimeter	IR Scattered Heat		