



# Lolo Peak Fire

MT-LNF-001288

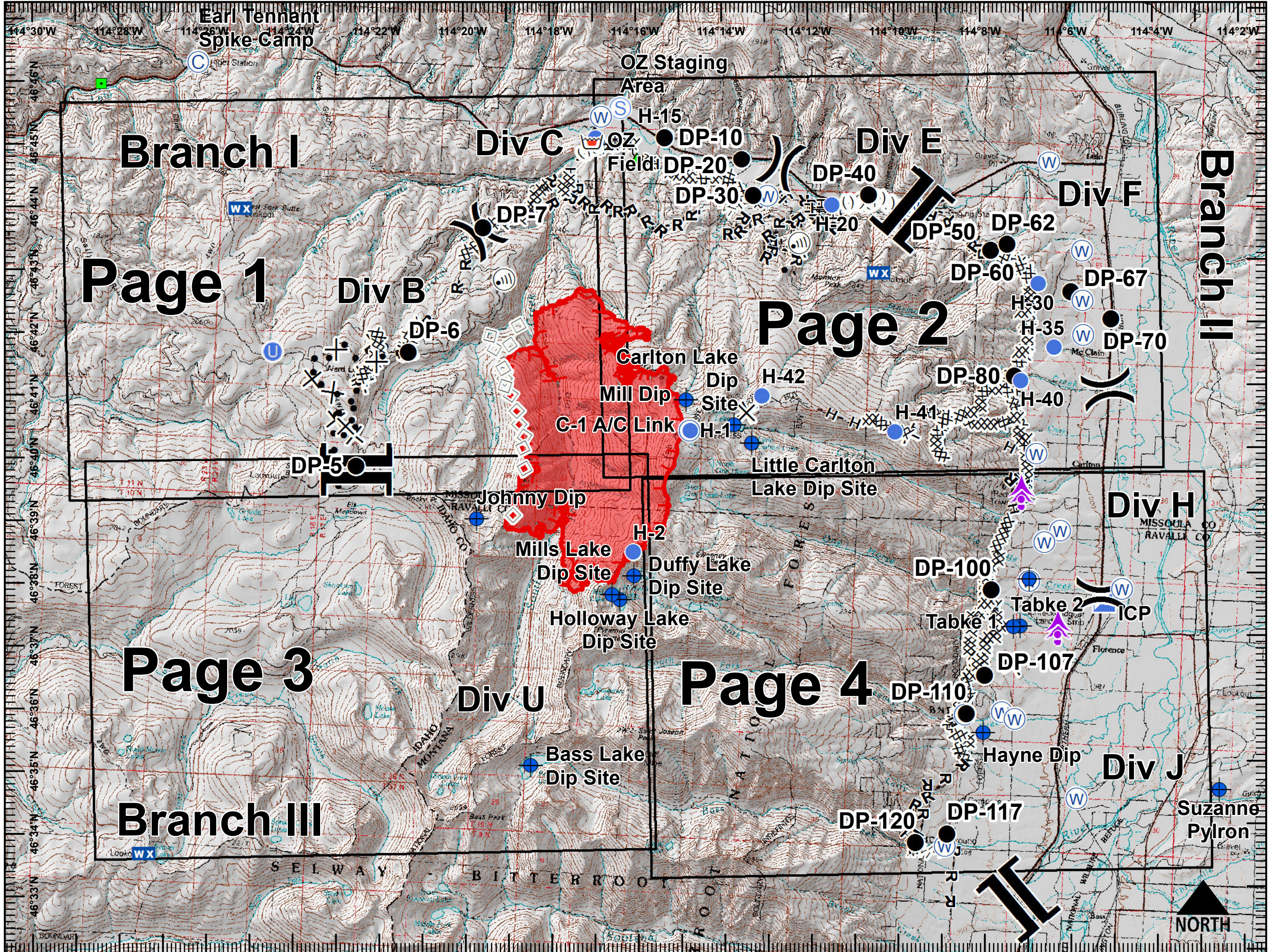
IAP Map Index

8/6/2017



7,084 acres, IR Perimeter as of 8/4/2017 @ 2313

- Aerial Hazard
- Camp
- Dip Site
- Drop Point
- Unimproved Landing Area
- Helispot
- ICP
- Internet Access
- Landmark
- Mobile Weather Unit
- Repeater
- Retardant/Mud Pit
- Staging Area
- Water Source
- Division Break
- Branch Break
- Completed Dozer Line
- H - H Completed Hand Line
- R - R Road as Completed Line
- Completed Plow Line
- Proposed Burnout
- Proposed Dozer Line
- Fire Break Planned or Incomplete
- Aerial Retardant Drop
- Ridge/Geographic Feature
- Uncontrolled Fire Edge
- Wildfire Daily Fire Perimeter



## Branch I

## Page 1

## Page 3

## Branch III

### Div C

### Div B

### Div U

### OZ Staging Area

### Div E

## Page 2

## Page 4

### Div F

### Div H

### Div J

## Branch II

NORTH



# Lolo Peak Fire

MT-LNF-001288

IAP Map, Page 1

8/6/2017

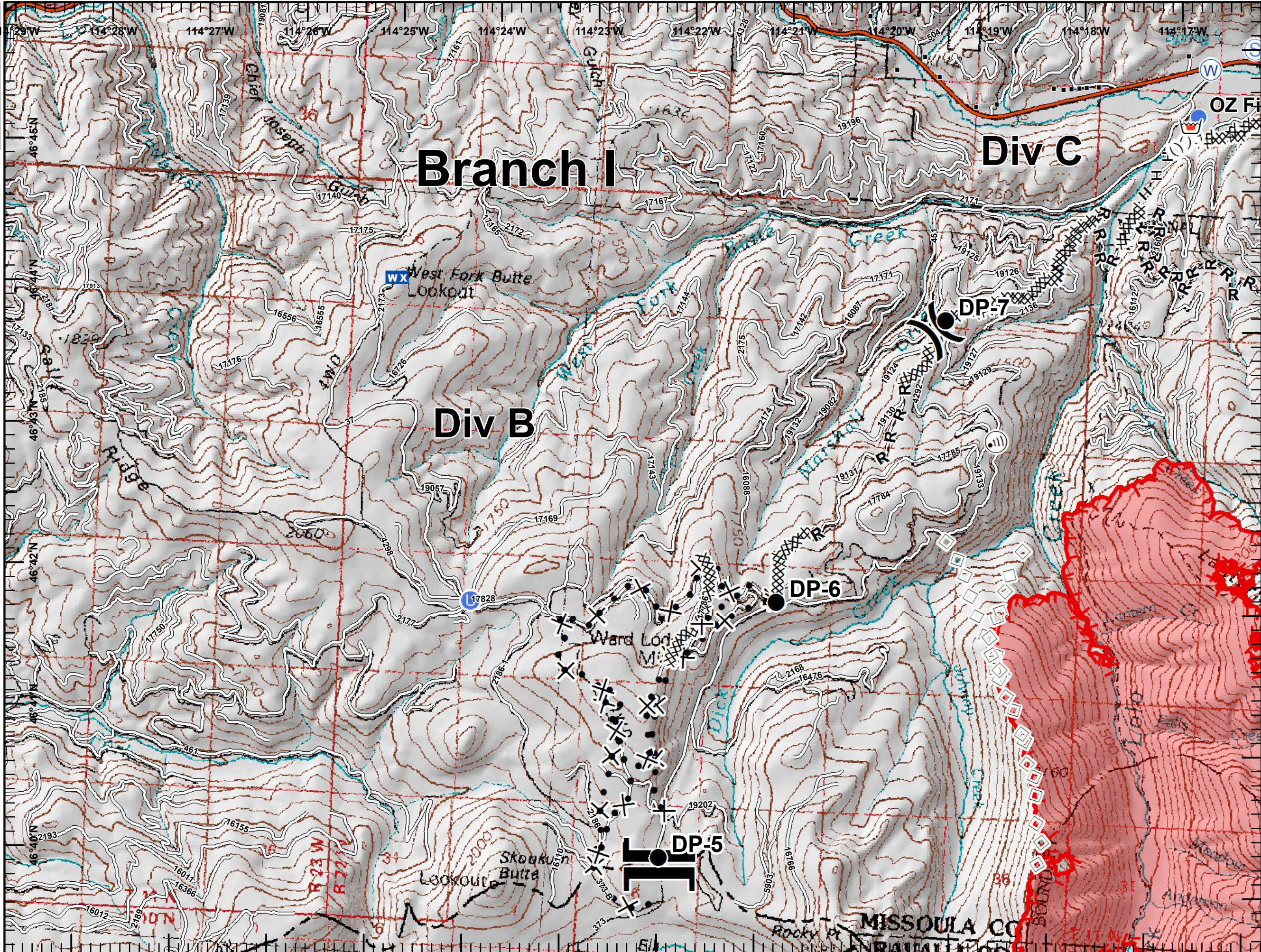


7,084 acres, IR Perimeter as of 8/4/2017 @ 2313

- Drop Point
- U Unimproved Landing Area
- Helispot
- Ⓜ Internet Access
- WX Mobile Weather Unit
- Retardant/Mud Pit
- Ⓢ Staging Area
- W Water Source
- ) Division Break
- || Branch Break
- Structures
- XXXXX Completed Dozer Line
- H - H Completed Hand Line
- R - R Road as Completed Line
- ⊗ ● Proposed Dozer Line
- ○ Aerial Retardant Drop
- ( ( ( Ridge/Geographic Feature
- Uncontrolled Fire Edge
- Interstate and Highways
- Roads
- Wildfire Daily Fire Perimeter



0 0.5 1 Miles





# Lolo Peak Fire

MT-LNF-001288

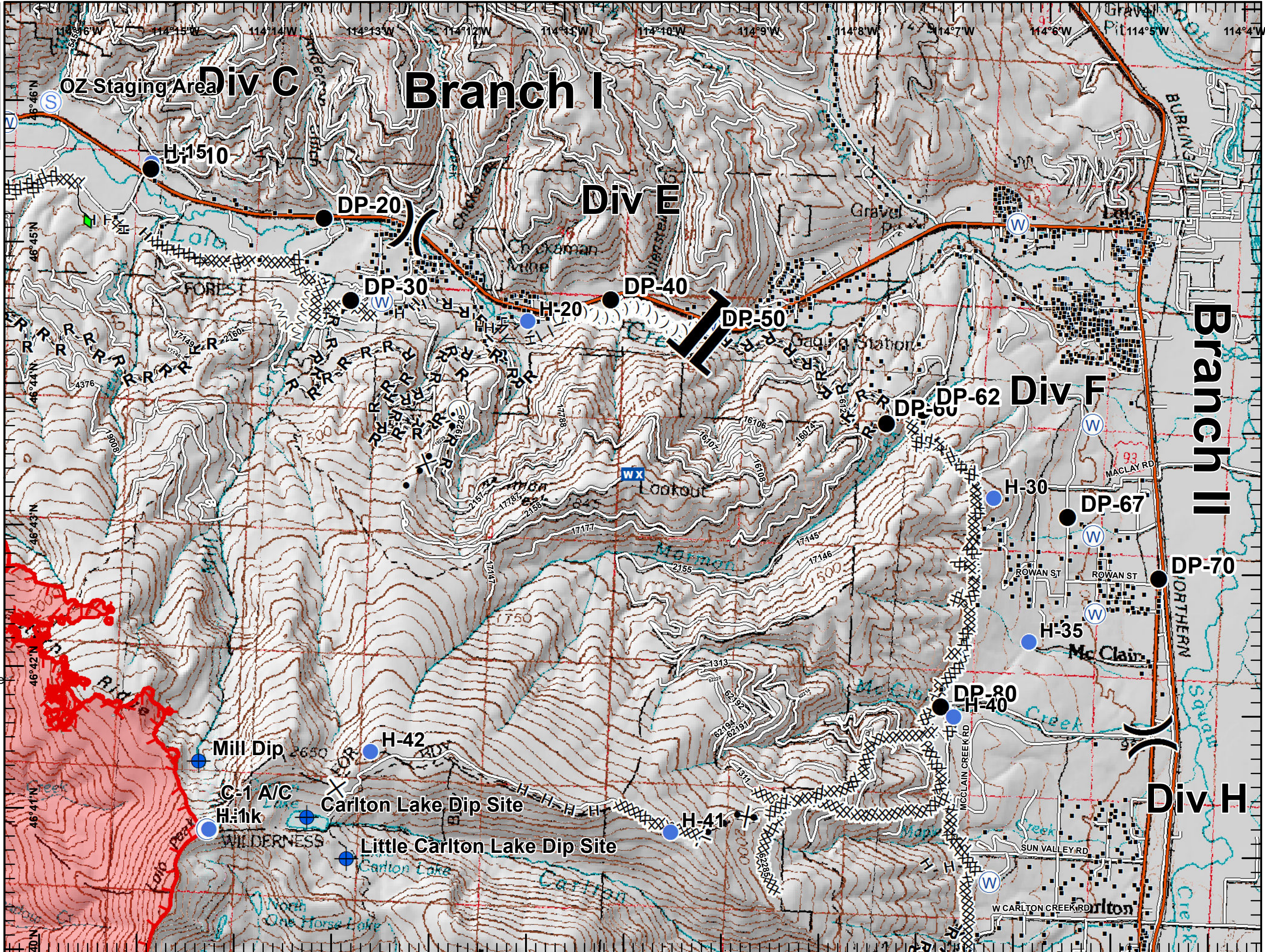
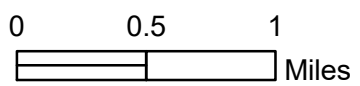
IAP Map, Page 2

8/6/2017



7,084 acres, IR Perimeter as of 8/4/2017 @ 2313

- Dip Site
- Drop Point
- Helispot
- Internet Access
- Mobile Weather Unit
- Repeater
- Staging Area
- Water Source
- Division Break
- Branch Break
- Structures
- Completed Dozer Line
- Completed Hand Line
- Road as Completed Line
- Completed Plow Line
- Proposed Burnout
- Proposed Dozer Line
- Fire Break Planned or Incomplete
- Ridge/Geographic Feature
- Uncontrolled Fire Edge
- Interstate and Highways
- Roads
- Wildfire Daily Fire Perimeter



46°40'N



# Lolo Peak Fire

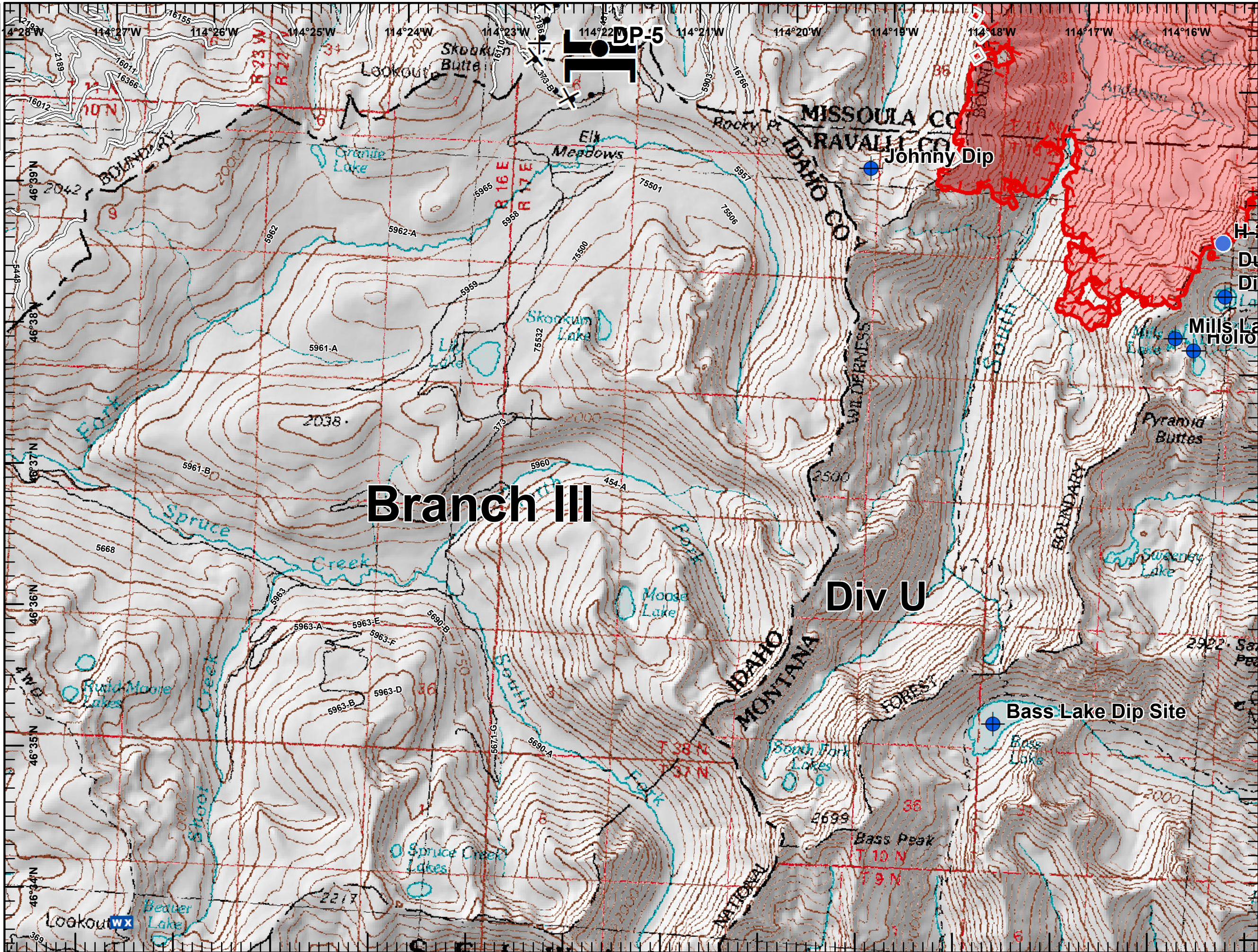
MT-LNF-001288

IAP Map, Page 3

8/6/2017



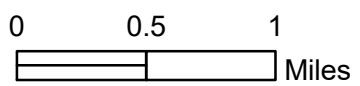
7,084 acres, IR Perimeter as of 8/4/2017 @ 2313



## Branch III

## Div U

- Dip Site
- Drop Point
- Helispot
- Mobile Weather Unit
- Branch Break
- Proposed Dozer Line
- Aerial Retardant Drop
- Uncontrolled Fire Edge
- Roads
- Wildfire Daily Fire Perimeter





# Lolo Peak Fire

MT-LNF-001288

IAP Map, Page 4

8/6/2017



7,084 acres, IR Perimeter as of 8/4/2017 @ 2313

- Aerial Hazard
- Dip Site
- Drop Point
- ICP
- Water Source
- Division Break
- Structures
- Completed Dozer Line
- Completed Hand Line
- Road as Completed Line
- Proposed Dozer Line
- Fire Break Planned or Incomplete
- Uncontrolled Fire Edge
- Interstate and Highways
- Roads
- Wildfire Daily Fire Perimeter



0 0.5 1 Miles

