



Lolo Peak Fire

MT-LNF-001288

IAP Map, Page 1

8/6/2017

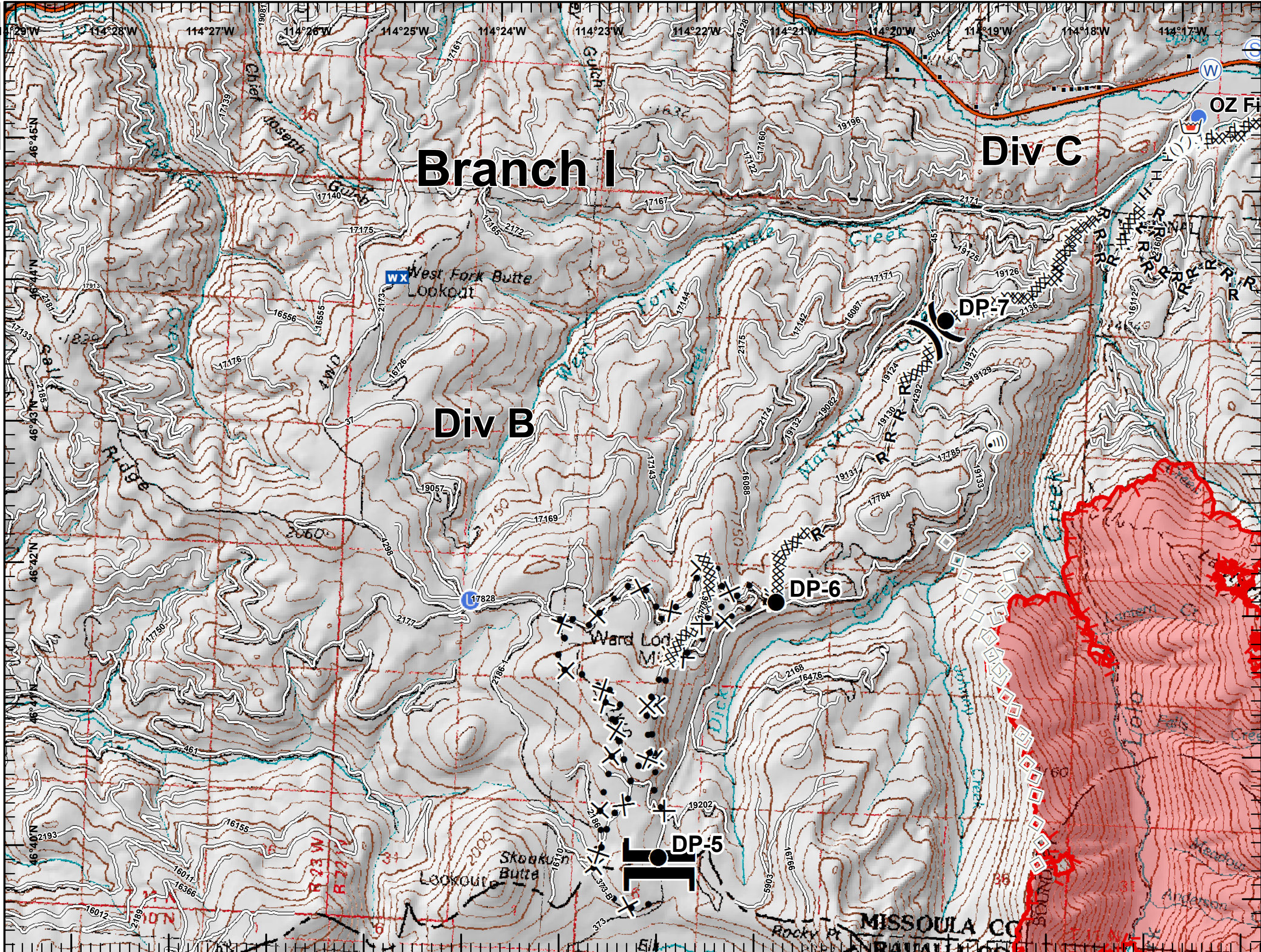


7,084 acres, IR Perimeter as of 8/4/2017 @ 2313

- Drop Point
- U Unimproved Landing Area
- Helispot
- Ⓜ Internet Access
- WX Mobile Weather Unit
- Retardant/Mud Pit
- Ⓢ Staging Area
- W Water Source
-) Division Break
- || Branch Break
- Structures
- XXXXX Completed Dozer Line
- H - H Completed Hand Line
- R - R Road as Completed Line
- ⊗ ● Proposed Dozer Line
- Aerial Retardant Drop
- (((Ridge/Geographic Feature
- Uncontrolled Fire Edge
- Interstate and Highways
- Roads
- Wildfire Daily Fire Perimeter



0 0.5 1 Miles





Lolo Peak Fire

MT-LNF-001288

IAP Map, Page 2

8/6/2017

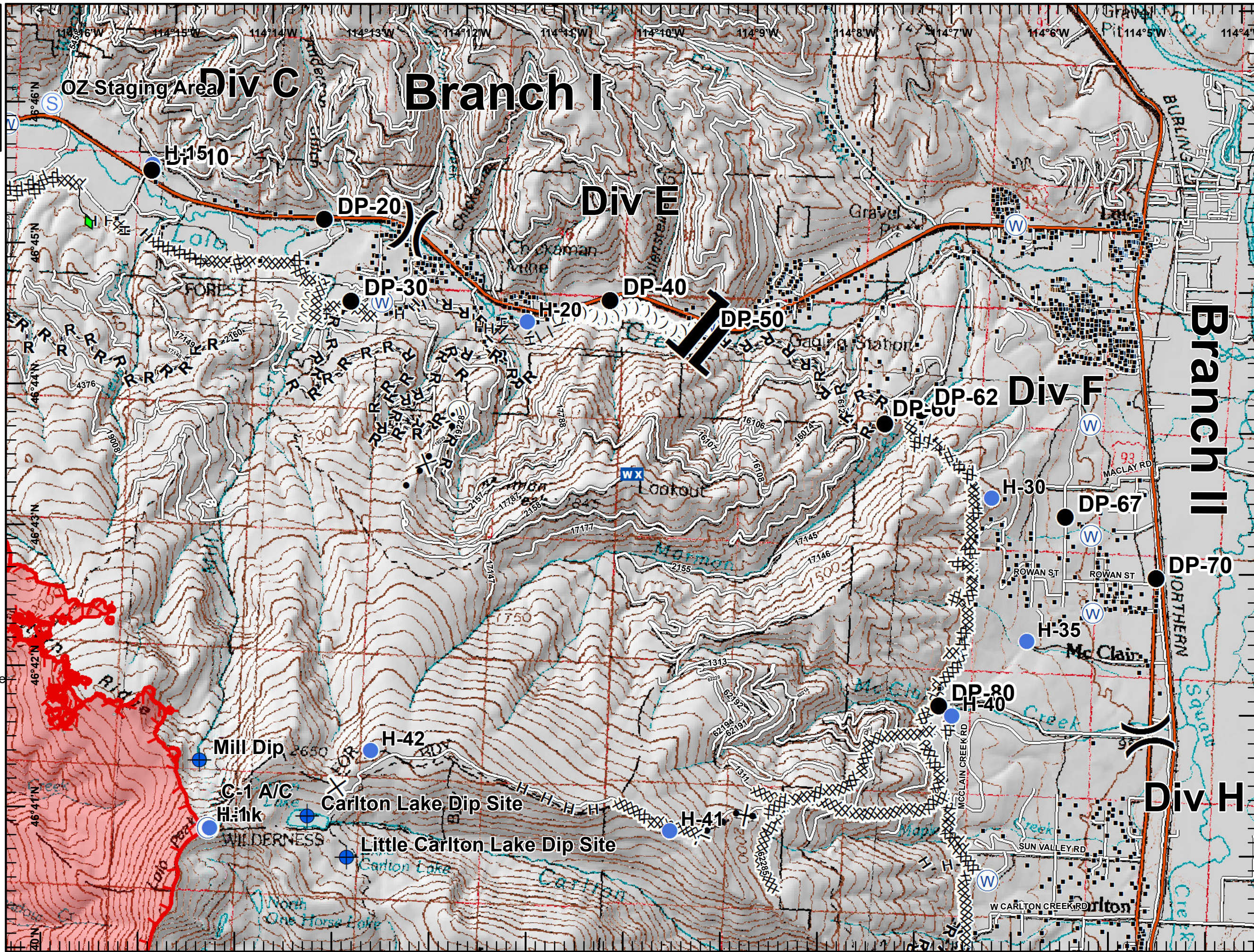


7,084 acres, IR Perimeter as of 8/4/2017 @ 2313

- Dip Site
- Drop Point
- Helispot
- Internet Access
- Mobile Weather Unit
- Repeater
- Staging Area
- Water Source
- Division Break
- Branch Break
- Structures
- Completed Dozer Line
- Completed Hand Line
- Road as Completed Line
- Completed Plow Line
- Proposed Burnout
- Proposed Dozer Line
- Fire Break Planned or Incomplete
- Ridge/Geographic Feature
- Uncontrolled Fire Edge
- Interstate and Highways
- Roads
- Wildfire Daily Fire Perimeter



0 0.5 1 Miles





Lolo Peak Fire

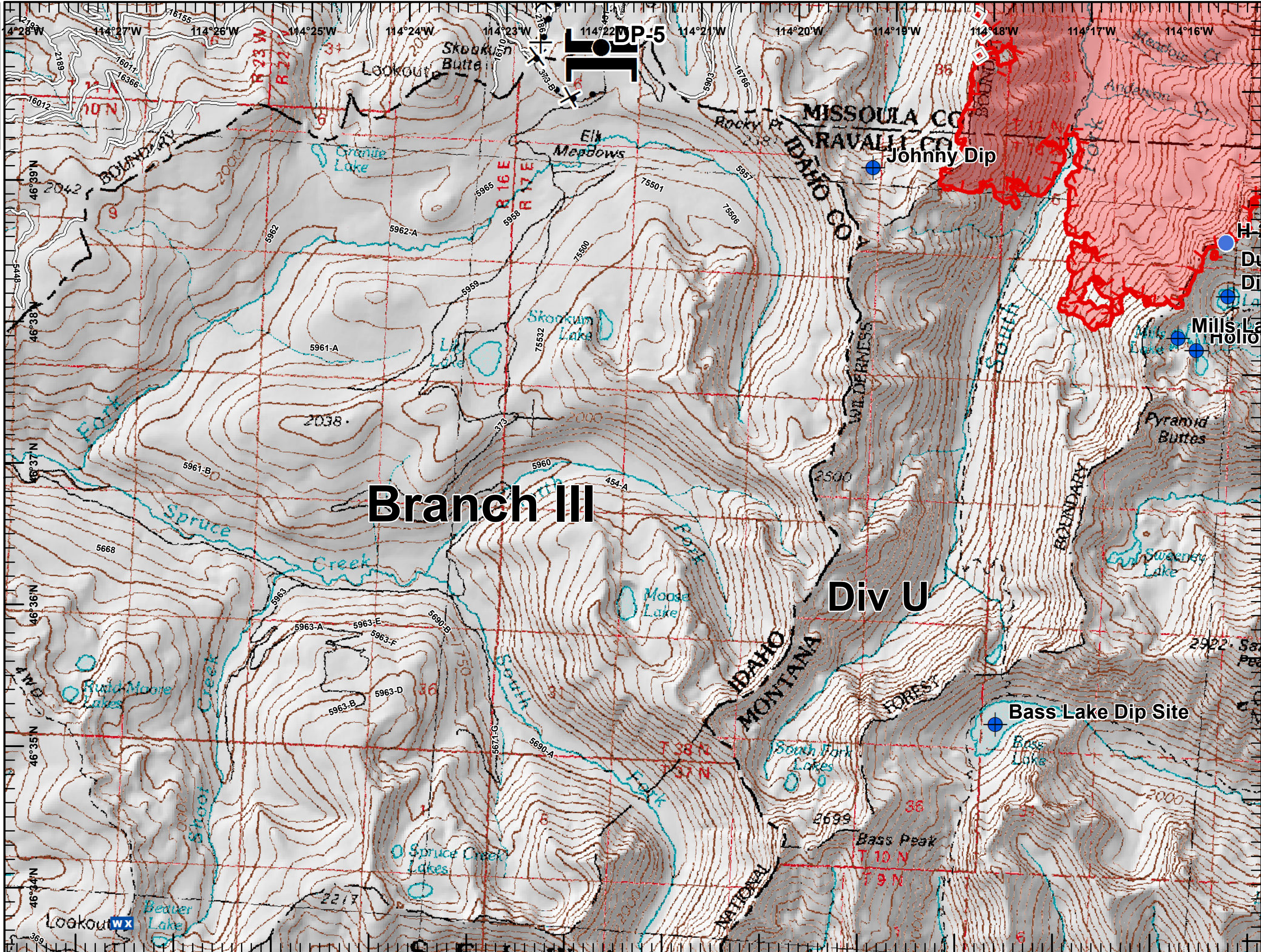
MT-LNF-001288

IAP Map, Page 3

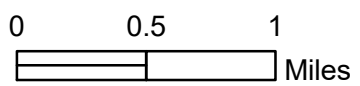
8/6/2017



7,084 acres, IR Perimeter as of 8/4/2017 @ 2313



- Dip Site
- Drop Point
- Helispot
- Mobile Weather Unit
- Branch Break
- Proposed Dozer Line
- Aerial Retardant Drop
- Uncontrolled Fire Edge
- Roads
- Wildfire Daily Fire Perimeter





Lolo Peak Fire

MT-LNF-001288

IAP Map, Page 4

8/6/2017



7,084 acres, IR Perimeter as of 8/4/2017 @ 2313

- Aerial Hazard
- Dip Site
- Drop Point
- ICP
- Water Source
- Division Break
- Structures

- Completed Dozer Line
- Completed Hand Line
- Road as Completed Line
- Proposed Dozer Line
- Fire Break Planned or Incomplete

- Uncontrolled Fire Edge
- Interstate and Highways
- Roads
- Wildfire Daily Fire Perimeter



NORTH

0 0.5 1 Miles

