
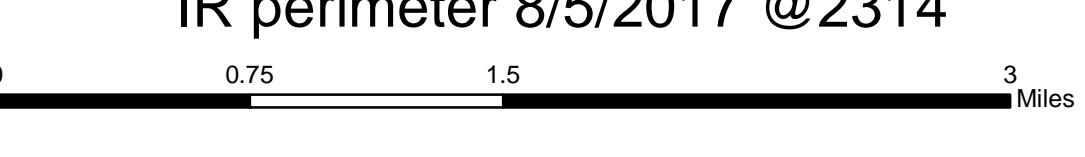
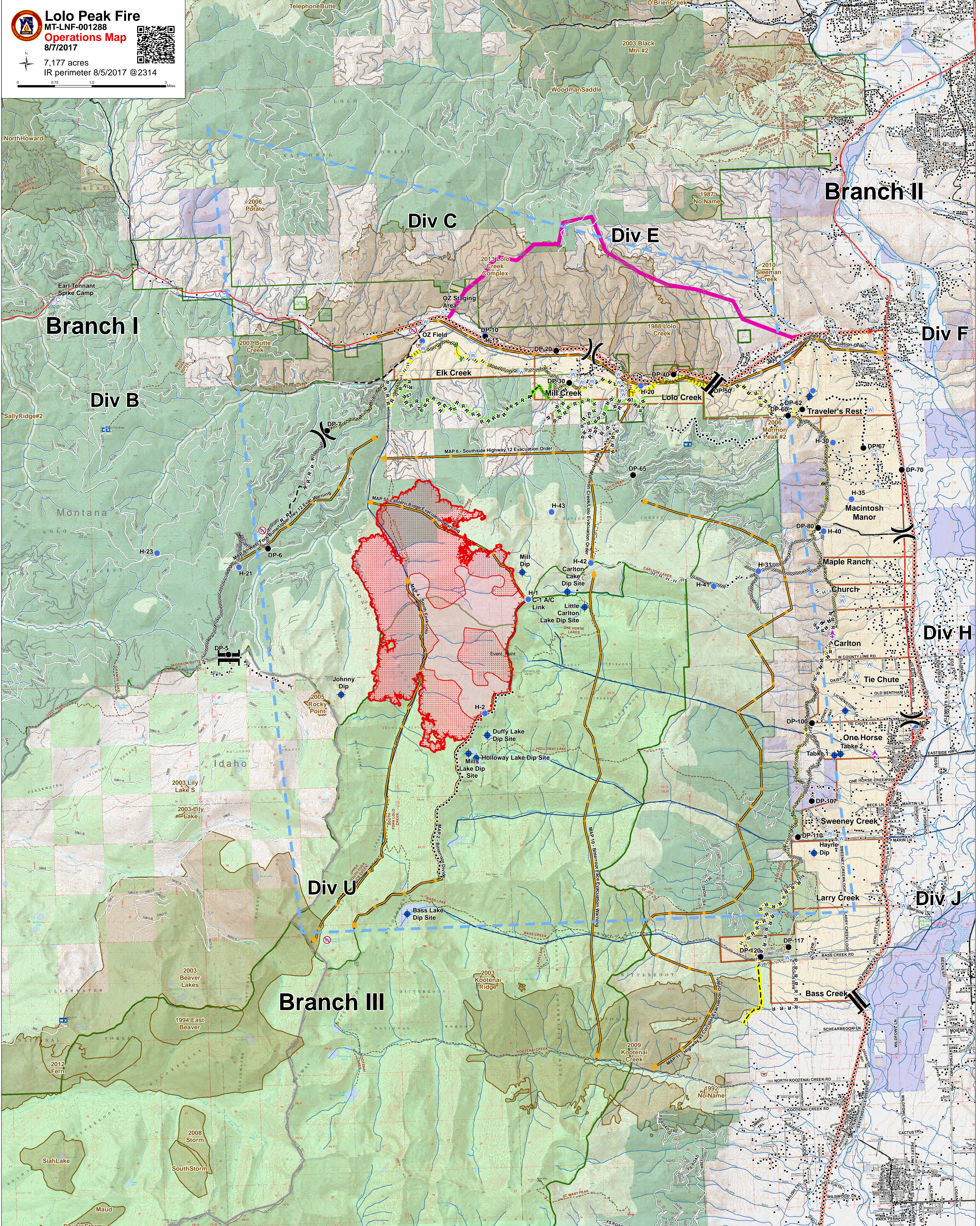


Lolo Peak Fire
 MT-LNF-001288
Operations Map
 8/7/2017

7,177 acres
 IR perimeter 8/5/2017 @2314

Aerial Hazard	ICP	Staging Area	Completed Dozer Line	Proposed Burnout	Planned Secondary Line	Primary Line	Values at Risk Bull Trout Streams	IR Isolated Heat Sources	Fire History 1980 - Present
Camp	Internet Access	Water Source	Completed Hand Line	Proposed Dozer Line	Aerial Retardant Drop	Alternate Line	Values at Risk Timber	IR Intense Heat	Boundary_I Idaho State
Dip Site	Lookout	Restricted Water Source	Road as Completed Line	Fire Break Planned or Incomplete	Ridge/Geographic Feature	Contingency Line	Timber Inv Mgmt	IR Scattered Heat	Forest Boundary
Drop Point	Mobile Weather Unit	Division Break	Completed Plow Line	Planned Fire Line	Uncontrolled Fire Edge	Emergency Line	Streams	Wildfire Daily Fire Perimeter	
Helispot	Repeater	Branch Break	Retardant/Mud Pit		TFR	Trails	Structures		
					Management Action Points	Evacuation Zones			