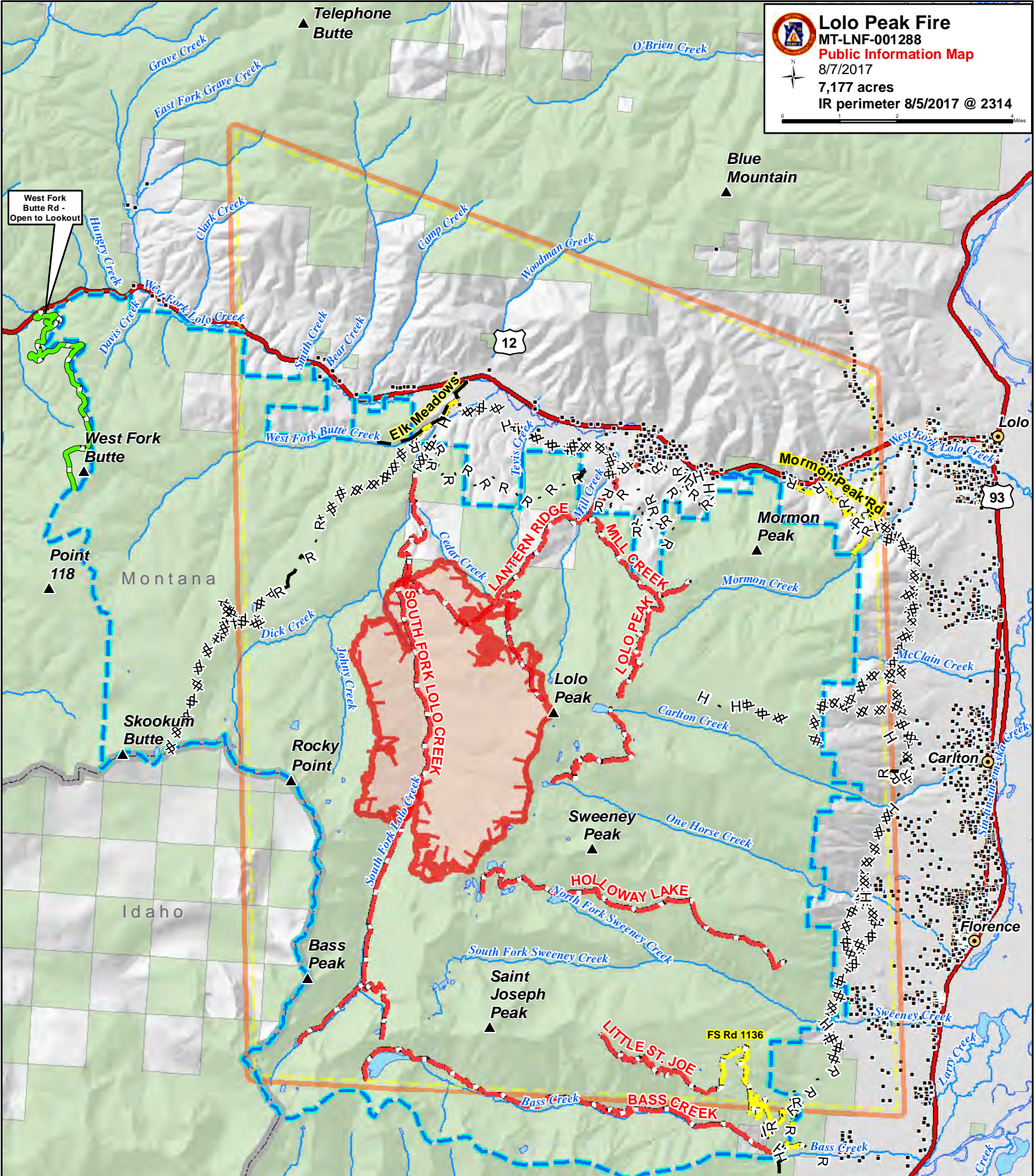




Lolo Peak Fire
 MT-LNF-001288
Public Information Map
 8/7/2017
 7,177 acres
 IR perimeter 8/5/2017 @ 2314



0 1 2 4 Miles



• Structures	Forest Service	Temporary Flight Restriction - Includes Unmanned Aerial Vehicles (Drones)
West Fork Butte Rd - Open to Lookout	State Boundary	Fire Perimeter
Road Closure	Closure Area	
Trail Closures	Uncontrolled Fire Edge	