

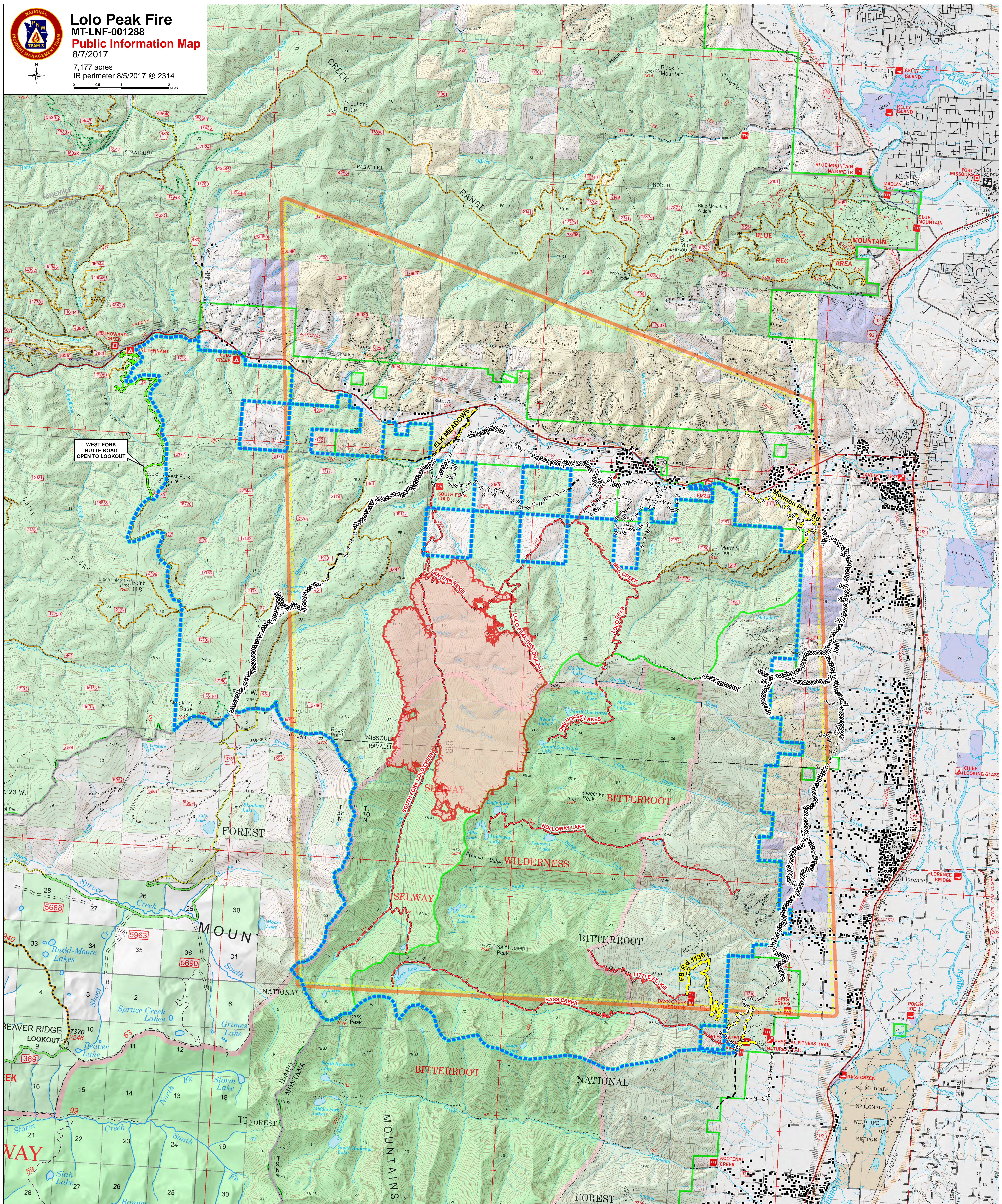


Lolo Peak Fire MT-LNF-001288 Public Information Map

8/7/2017
7,177 acres
IR perimeter 8/5/2017 @ 2314



0 0.5 1 1.5 2 Miles



• Structures	XXXXXXXXX Completed Dozer Line	▭ Closure Area	▭ Temporary Flight Restriction - Includes Unmanned Aerial Vehicles (Drones)
— West Fork Butte Rd - Open to Lookout	- - - - - Completed Hand Line	▭ State Boundary	▭ Fire Perimeter
— Road Closure	- R - R - R - Road as Completed Line	— Planned Fire Line	▭ Uncontrolled Fire Edge
— Trail Closures			

