



Lolo Peak Fire

MT-LNF-001288

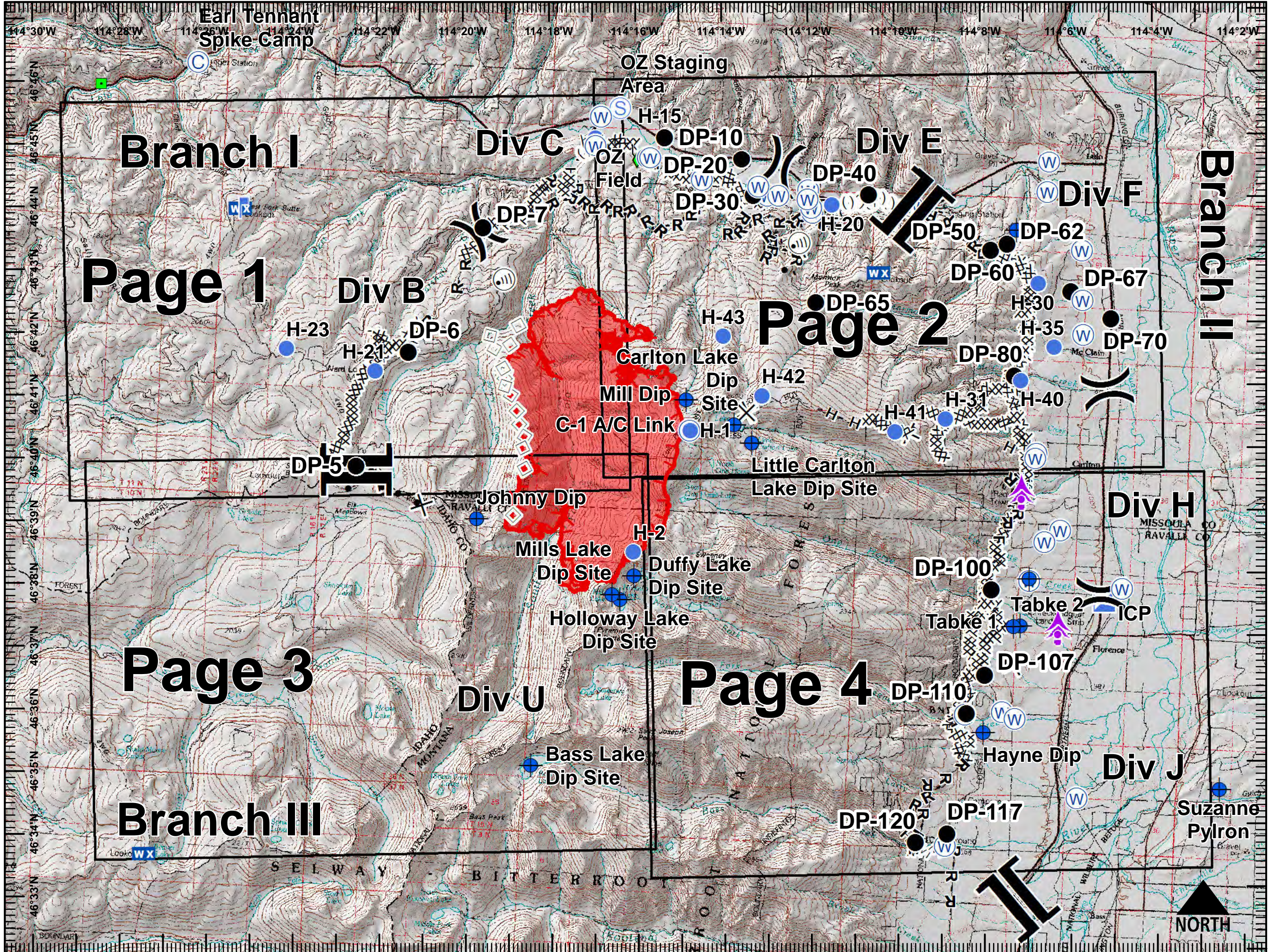
IAP Map Index

8/7/2017



7,177 acres, IR Perimeter as of 8/5/2017 @ 2314

- Aerial Hazard
- Camp
- Dip Site
- Drop Point
- Helispot
- ICP
- Internet Access
- Landmark
- Lookout
- Mobile Weather Unit
- Repeater
- Retardant/Mud Pit
- Staging Area
- Water Source
- Division Break
- Branch Break
- Completed Dozer Line
- H - H Completed Hand Line
- R - R Road as Completed Line
- Completed Plow Line
- Proposed Burnout
- Proposed Dozer Line
- Fire Break Planned or Incomplete
- Aerial Retardant Drop
- Ridge/Geographic Feature
- Uncontrolled Fire Edge
- Wildfire Daily Fire Perimeter



Branch I

Page 1

Page 3

Branch III

Div C

Div B

Div U

OZ Staging Area

Div E

Page 2

Page 4

Div F

Div H

Div J

Branch II

NORTH



Lolo Peak Fire

MT-LNF-001288

IAP Map, Page 1

8/7/2017

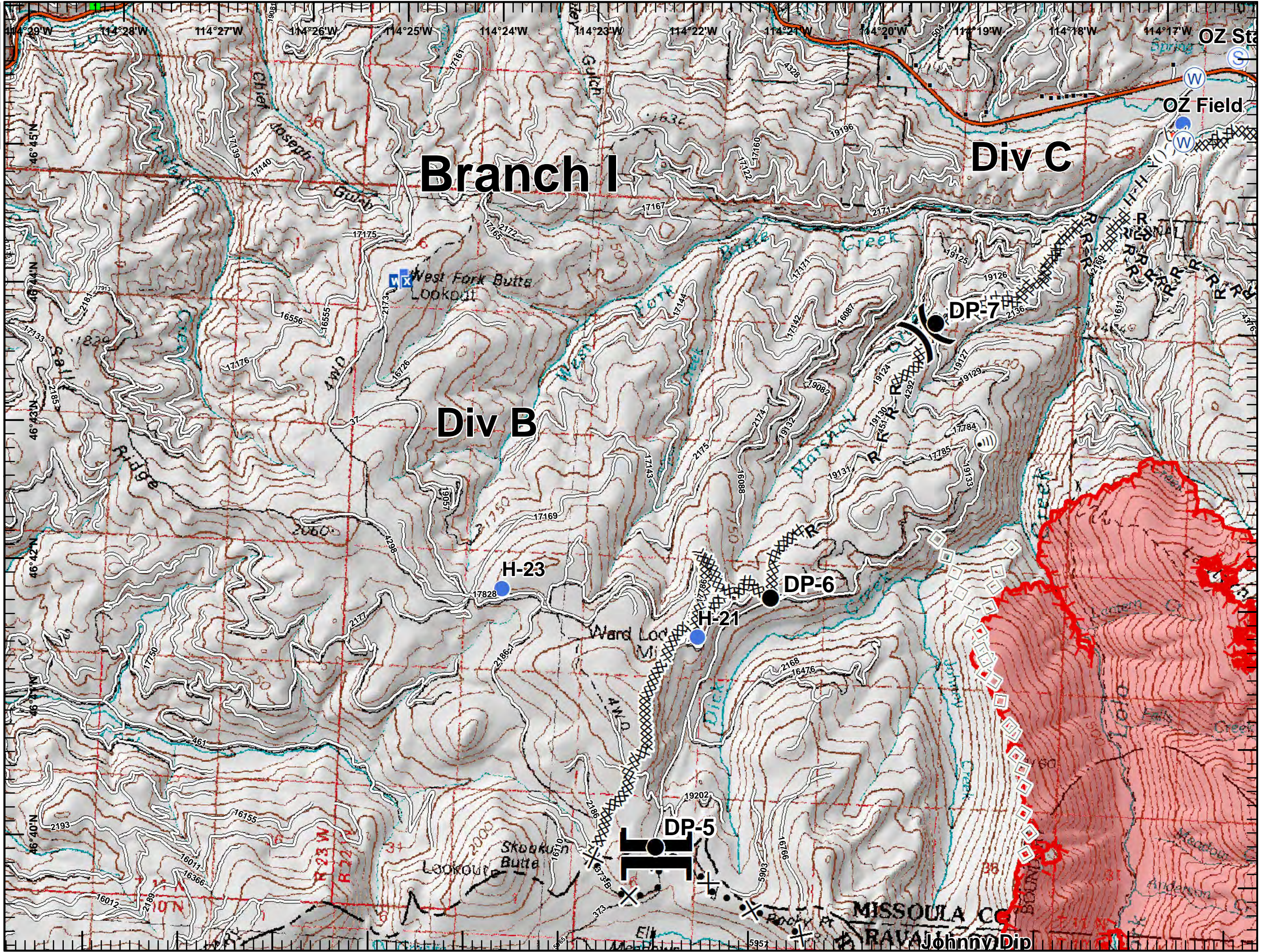


7,177 acres, IR Perimeter as of 8/5/2017 @ 2314

- Drop Point
- Helispot
- Ⓜ Internet Access
- Landmark
- ⌚ Lookout
- WX Mobile Weather Unit
- Retardant/Mud Pit
- Ⓢ Staging Area
- Ⓜ Water Source
-) Division Break
- || Branch Break
- Structures
- XXXXX Completed Dozer Line
- H - H Completed Hand Line
- R - R Road as Completed Line
- ⊗ Proposed Dozer Line
- Aerial Retardant Drop
- ((() Ridge/Geographic Feature
- Uncontrolled Fire Edge
- Interstate and Highways
- Roads
- Wildfire Daily Fire Perimeter



0 0.5 1 Miles





Lolo Peak Fire

MT-LNF-001288

IAP Map, Page 2

8/7/2017

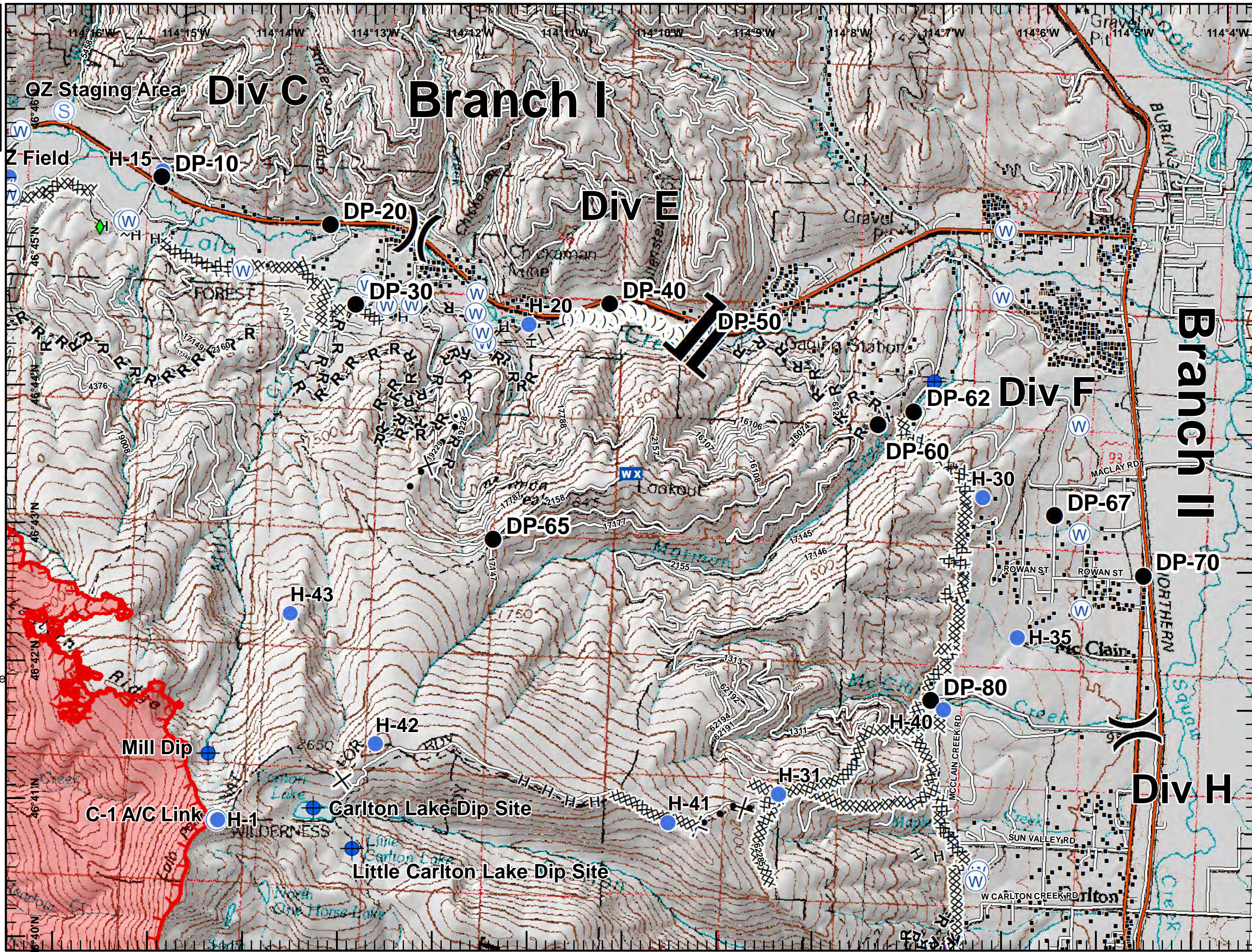


7,177 acres, IR Perimeter as of 8/5/2017 @ 2314

- Aerial Hazard
- Dip Site
- Drop Point
- Helispot
- Internet Access
- Mobile Weather Unit
- Repeater
- Retardant/Mud Pit
- Staging Area
- Water Source
- Division Break
- Branch Break
- Structures
- Completed Dozer Line
- Completed Hand Line
- Road as Completed Line
- Completed Plow Line
- Proposed Burnout
- Proposed Dozer Line
- Fire Break Planned or Incomplete
- Ridge/Geographic Feature
- Uncontrolled Fire Edge
- Interstate and Highways
- Roads
- Wildfire Daily Fire Perimeter



0 0.5 1 Miles





Lolo Peak Fire

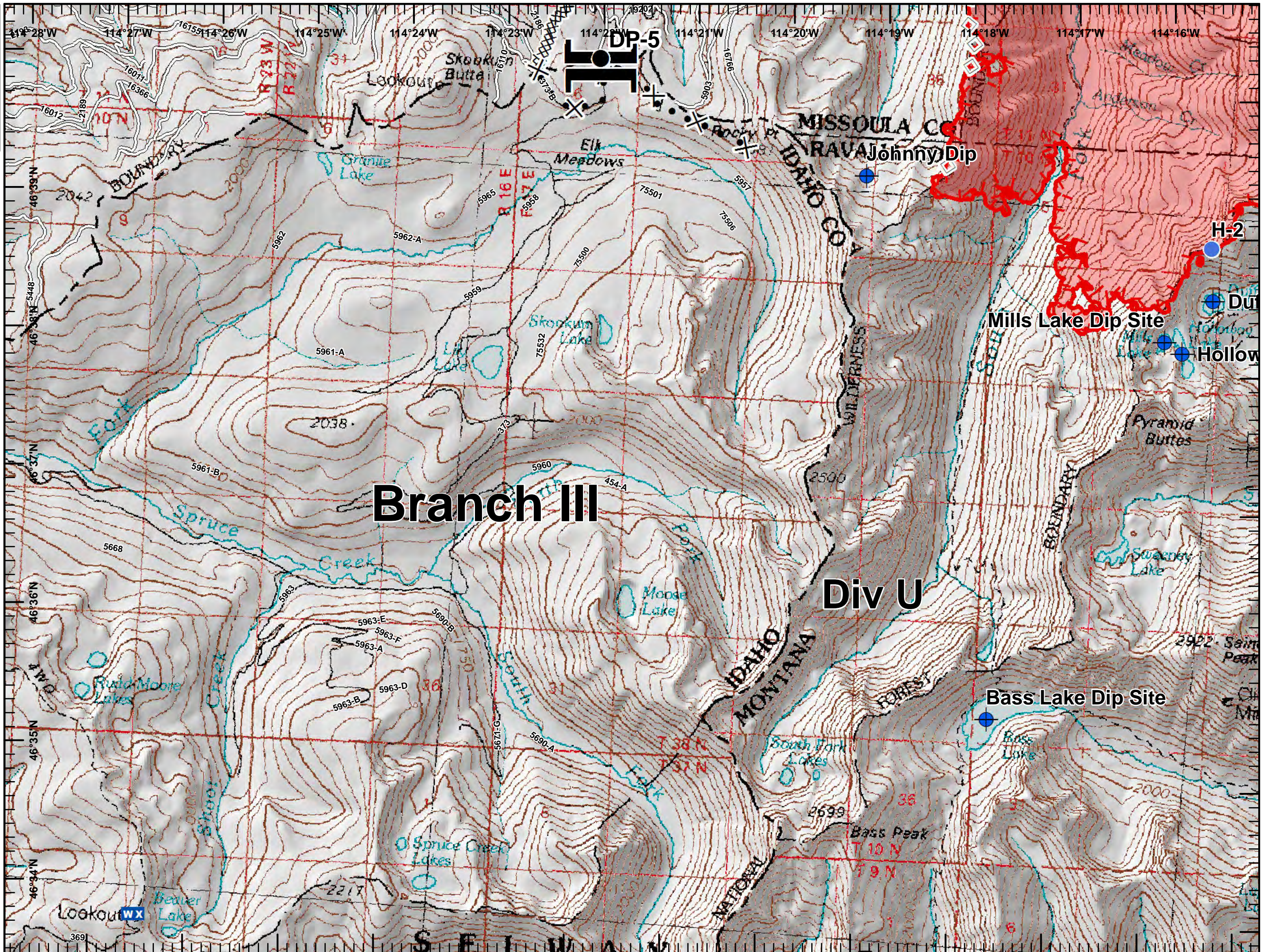
MT-LNF-001288

IAP Map, Page 3

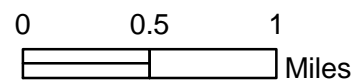
8/7/2017



7,177 acres, IR Perimeter as of 8/5/2017 @ 2314



- Dip Site
- Drop Point
- Helispot
- Mobile Weather Unit
- Branch Break
- Completed Dozer Line
- Proposed Dozer Line
- Aerial Retardant Drop
- Uncontrolled Fire Edge
- Roads
- Wildfire Daily Fire Perimeter



Branch III

Div U

DP-5

H-2

Mills Lake Dip Site

Bass Lake Dip Site

MISSOULA CO

RAVA Jónhny Dip

IDAHO CO

IDAHO

MONTANA

FOREST

Lookout WX

S E I W A N



Lolo Peak Fire
 MT-LNF-001288
 IAP Map, Page 4
 8/7/2017



7,177 acres, IR Perimeter
 as of 8/5/2017 @ 2314

- Aerial Hazard
- Dip Site
- Drop Point
- ICP
- Water Source
- Division Break
- Structures
- Completed Dozer Line
- H - H Completed Hand Line
- R - R Road as Completed Line
- Proposed Dozer Line
- Fire Break Planned or Incomplete
- Uncontrolled Fire Edge
- Interstate and Highways
- Roads
- Wildfire Daily Fire Perimeter



0 0.5 1
 Miles

