



Lolo Peak Fire

MT-LNF-001288

IAP Map, Page 1

8/7/2017

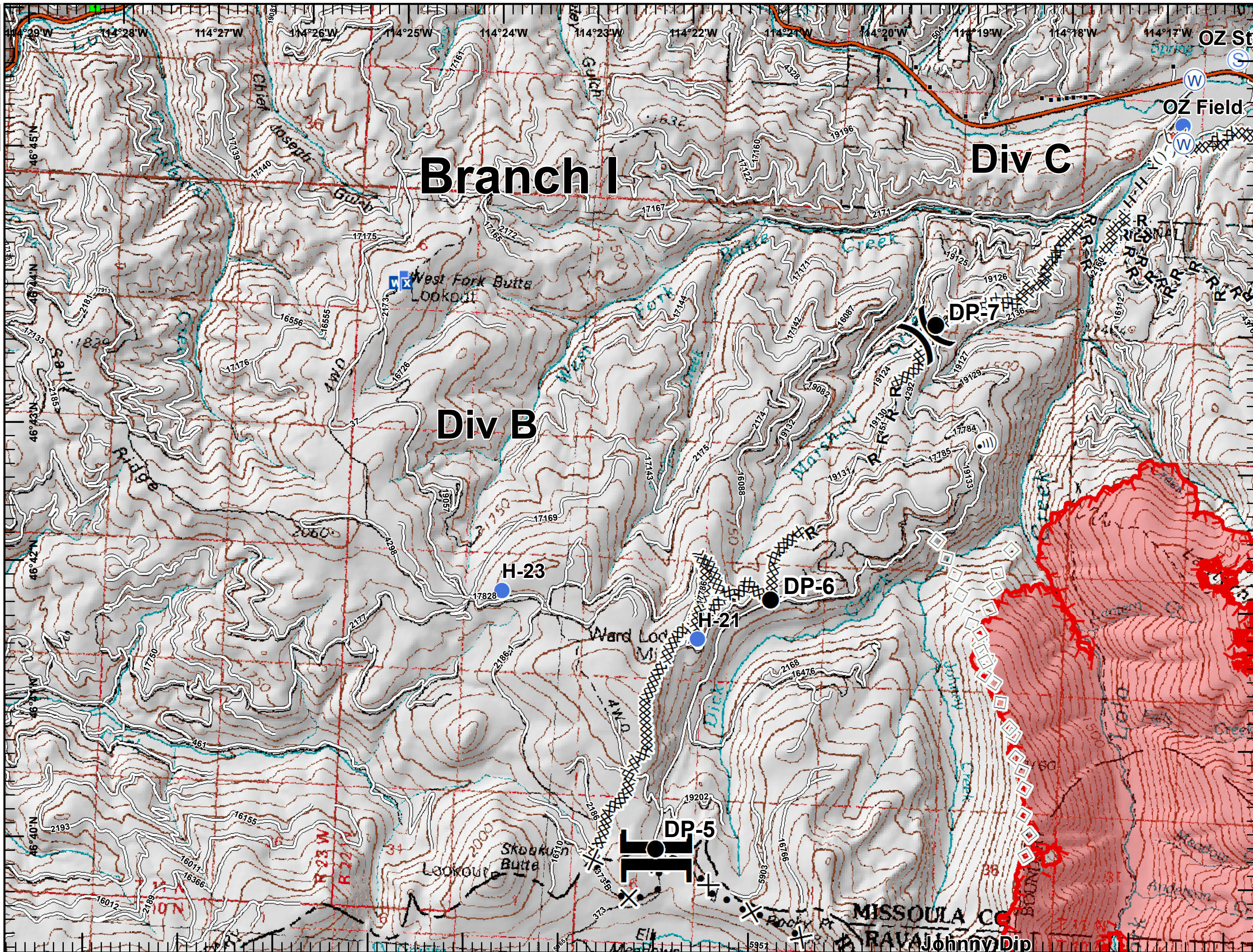


7,177 acres, IR Perimeter as of 8/5/2017 @ 2314

- Drop Point
- Helispot
- Ⓜ Internet Access
- Landmark
- └ Lookout
- WX Mobile Weather Unit
- Retardant/Mud Pit
- Ⓢ Staging Area
- Ⓜ Water Source
-) Division Break
- ┌ Branch Break
- Structures
- XXXXX Completed Dozer Line
- H - H Completed Hand Line
- R - R Road as Completed Line
- ⊗ Proposed Dozer Line
- Aerial Retardant Drop
- ((() Ridge/Geographic Feature
- Uncontrolled Fire Edge
- Interstate and Highways
- Roads
- Wildfire Daily Fire Perimeter



0 0.5 1 Miles





Lolo Peak Fire

MT-LNF-001288

IAP Map, Page 2

8/7/2017

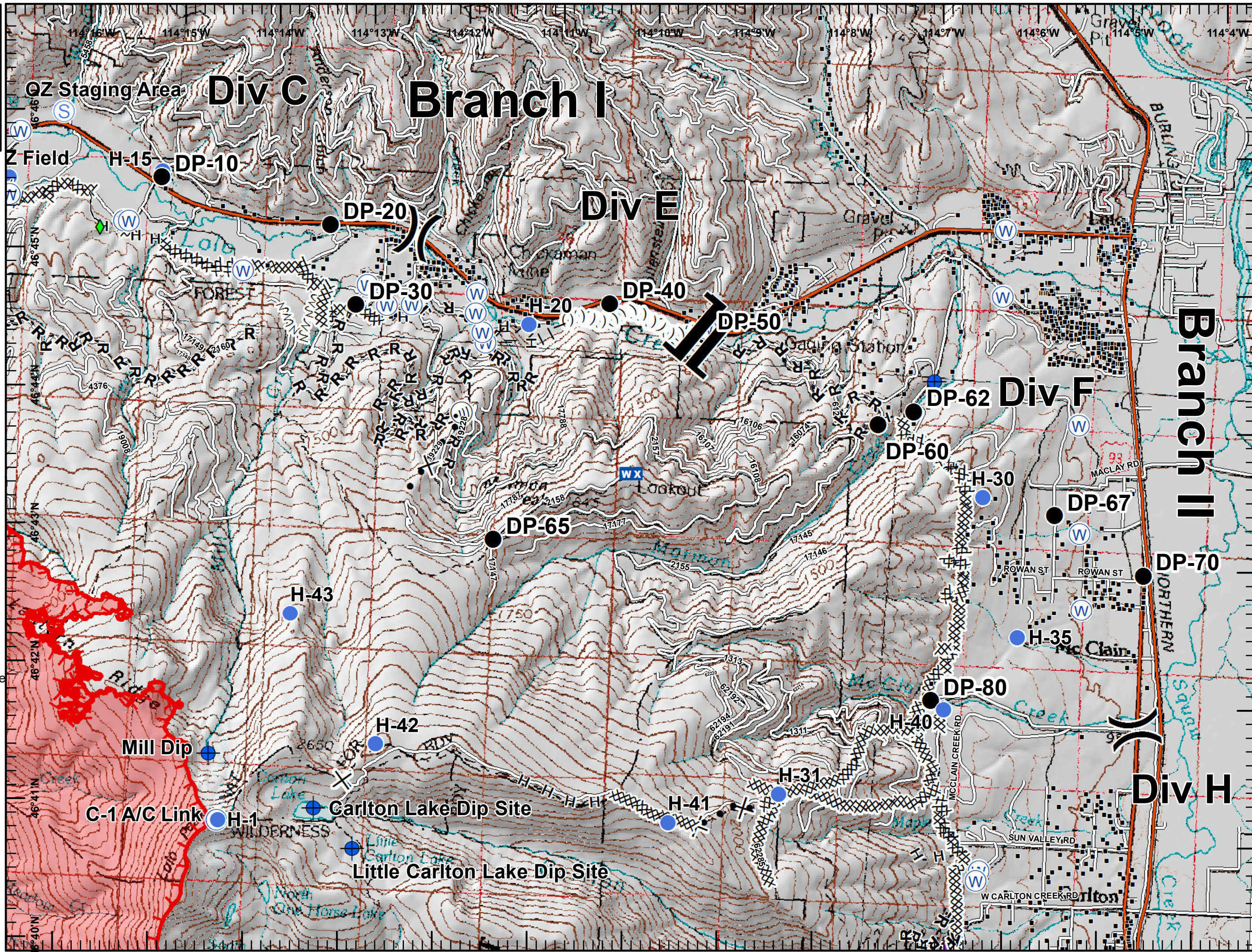


7,177 acres, IR Perimeter as of 8/5/2017 @ 2314

- Aerial Hazard
- Dip Site
- Drop Point
- Helispot
- Internet Access
- Mobile Weather Unit
- Repeater
- Retardant/Mud Pit
- Staging Area
- Water Source
- Division Break
- Branch Break
- Structures
- Completed Dozer Line
- Completed Hand Line
- Road as Completed Line
- Completed Plow Line
- Proposed Burnout
- Proposed Dozer Line
- Fire Break Planned or Incomplete
- Ridge/Geographic Feature
- Uncontrolled Fire Edge
- Interstate and Highways
- Roads
- Wildfire Daily Fire Perimeter



0 0.5 1 Miles





Lolo Peak Fire

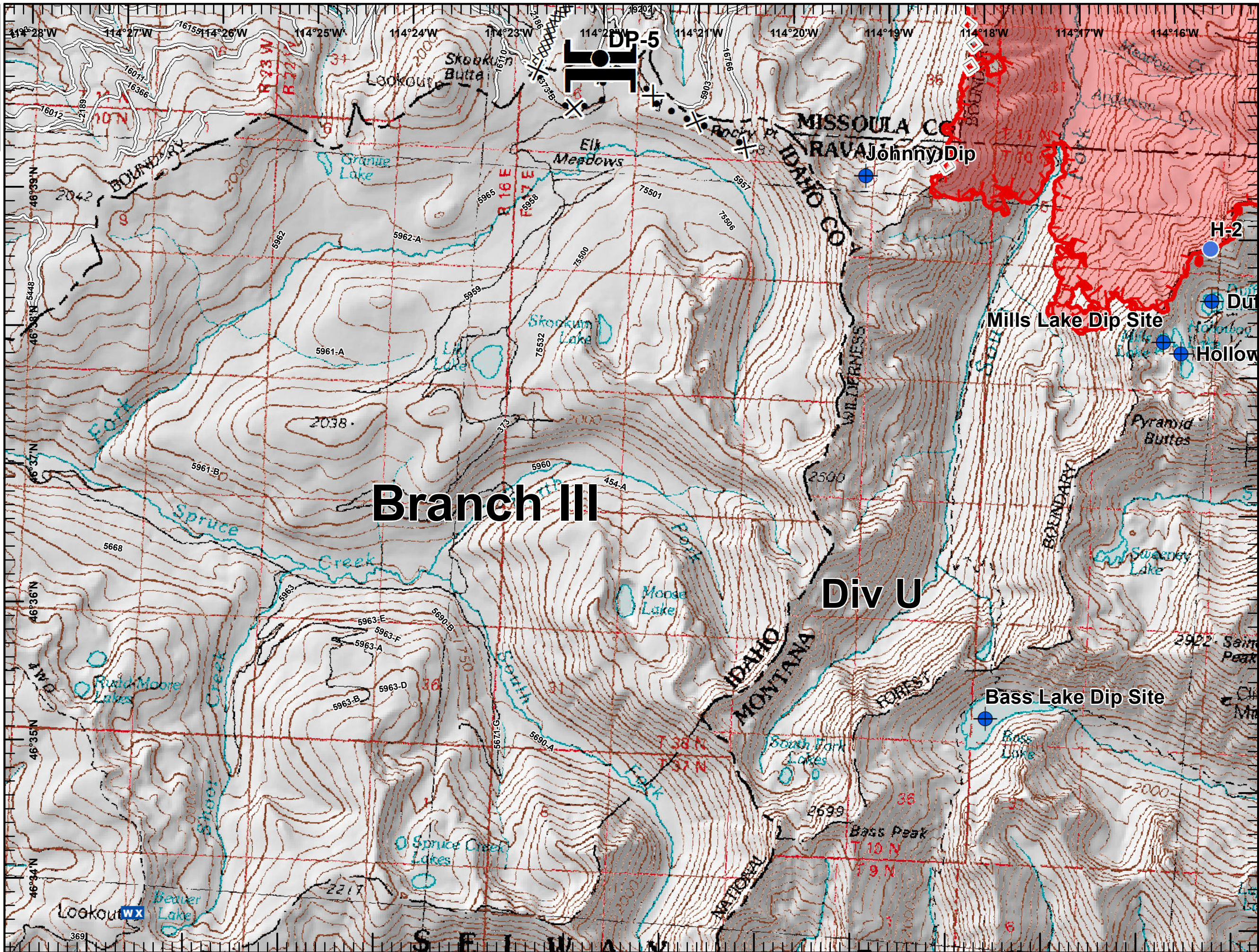
MT-LNF-001288

IAP Map, Page 3

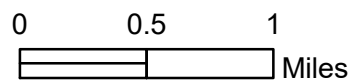
8/7/2017



7,177 acres, IR Perimeter as of 8/5/2017 @ 2314



- Dip Site
- Drop Point
- Helispot
- Mobile Weather Unit
- Branch Break
- Completed Dozer Line
- Proposed Dozer Line
- Aerial Retardant Drop
- Uncontrolled Fire Edge
- Roads
- Wildfire Daily Fire Perimeter





Lolo Peak Fire

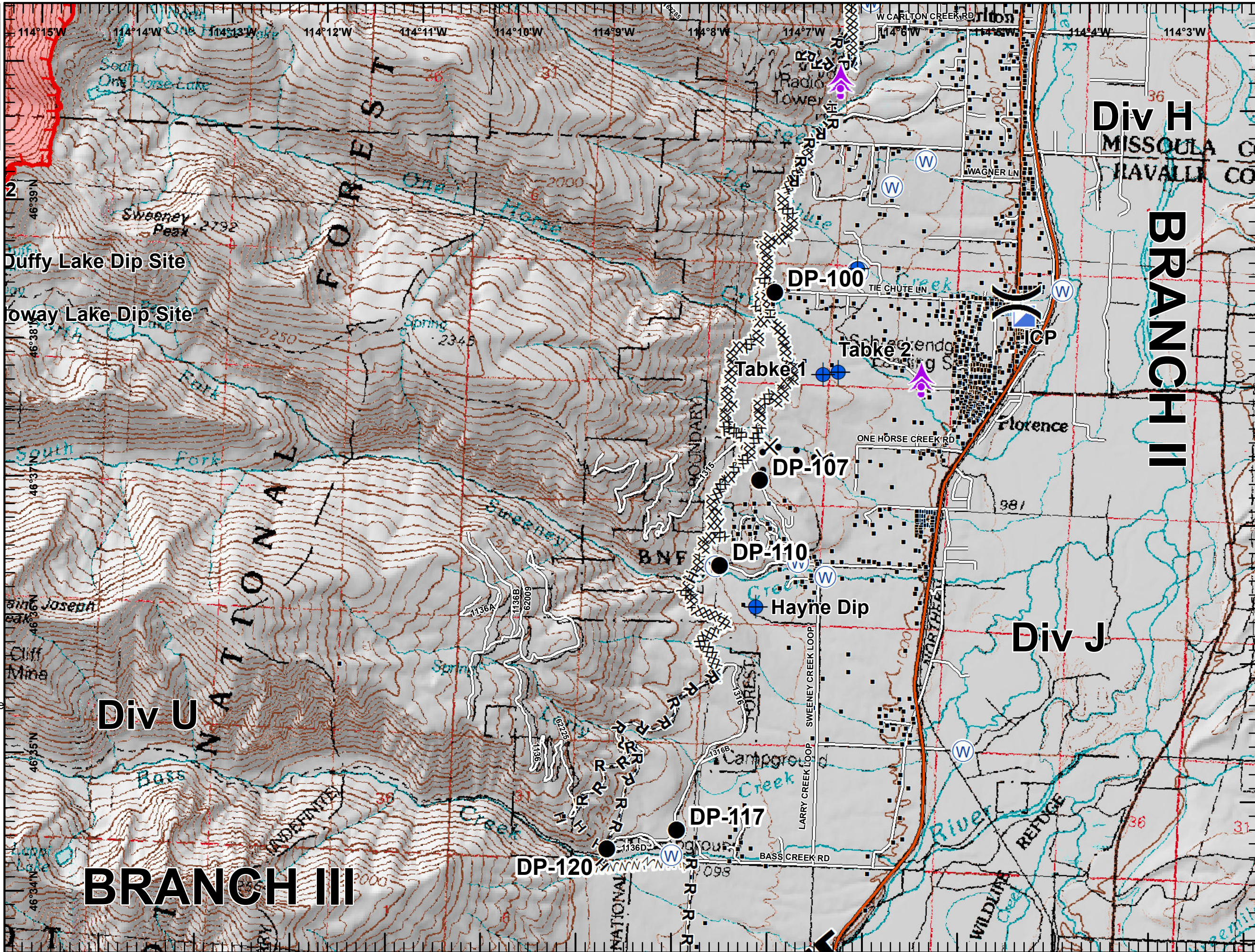
MT-LNF-001288

IAP Map, Page 4

8/7/2017



7,177 acres, IR Perimeter as of 8/5/2017 @ 2314



- Aerial Hazard
- Dip Site
- Drop Point
- ICP
- Water Source
- Division Break
- Structures

- Completed Dozer Line
- H - H Completed Hand Line
- R - R Road as Completed Line
- Proposed Dozer Line
- Fire Break Planned or Incomplete

- Uncontrolled Fire Edge
- Interstate and Highways
- Roads
- Wildfire Daily Fire Perimeter

