
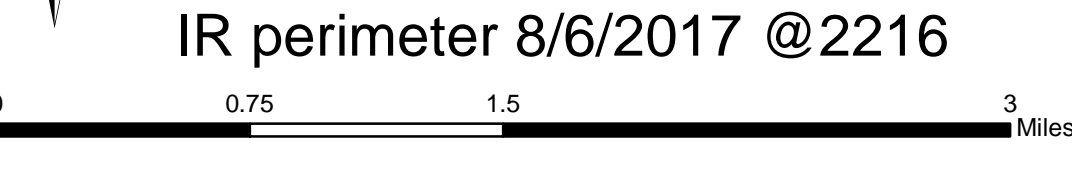
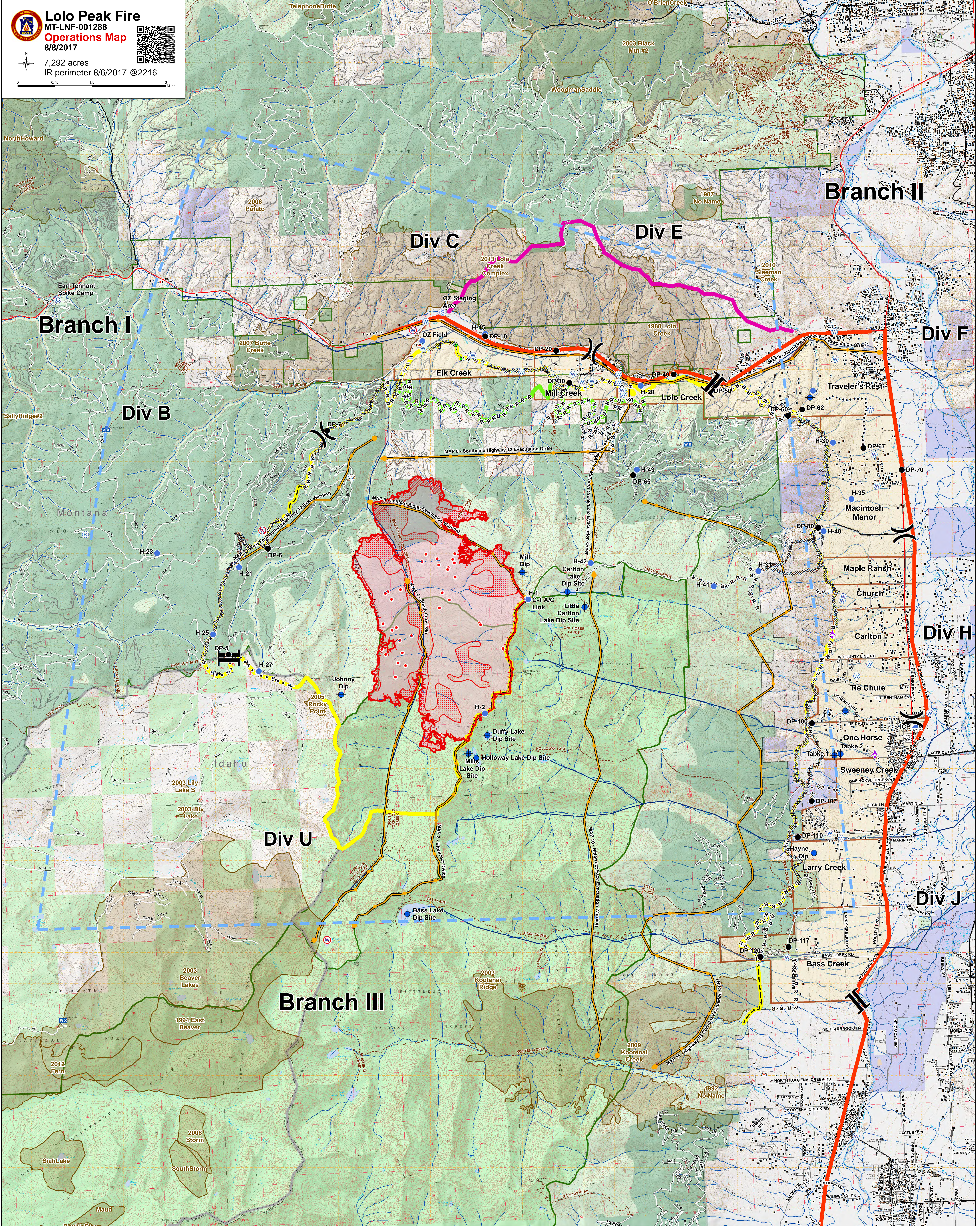


Lolo Peak Fire
 MT-LNF-001288
Operations Map
 8/8/2017

7,292 acres
 IR perimeter 8/6/2017 @2216

- | | | | | | | | | |
|---------------|---------------------|-------------------------|------------------------|-------------------------------|--------------------------|------------------|-----------------------------------|-----------------------------|
| Aerial Hazard | Internet Access | Water Source | Completed Dozer Line | Proposed Dozer Line | Management Action Points | Primary Line | Trails | Wilderness |
| Camp | Lookout | Restricted Water Source | Completed Hand Line | Planned Fire Line | Evacuation Zones | Alternate Line | Streams | Fire History 1980 - Present |
| Dip Site | Mobile Weather Unit | Branch Break | Road as Completed Line | Planned Secondary Line | IR Isolated Heat Sources | Contingency Line | Values at Risk Bull Trout Streams | State Boundary |
| Drop Point | Repeater | Aerial Retardant Drop | Completed Plow Line | Uncontrolled Fire Edge | IR Intense Heat | Emergency Line | Values at Risk Timber | Forest Boundary |
| Helispot | Retardant/Mud Pit | Structures | TFR | Wildfire Daily Fire Perimeter | IR Scattered Heat | Timber Inv Mgmt | | |
| ICP | Staging Area | | | Wildfire Daily Fire Perimeter | | | | |