

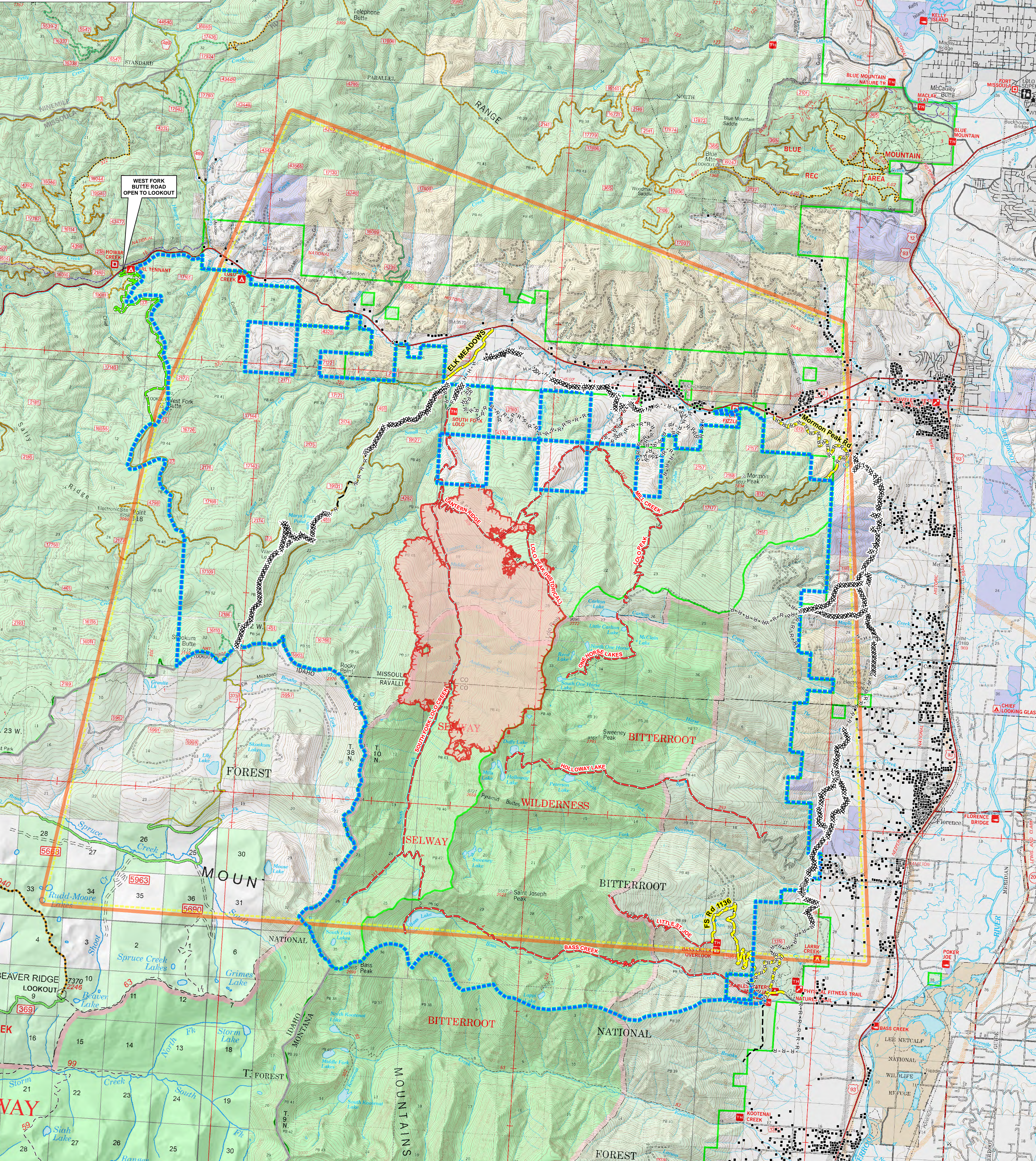


# Lolo Peak Fire

## MT-LNF-001288

### Public Information Map

8/8/2017  
7,292 acres  
IR perimeter 8/6/2017 @ 2216



WEST FORK BUTTE ROAD OPEN TO LOOKOUT

- Structures
- West Fork Butte Rd - Open to Lookout
- Road Closure
- Trail Closures
- Completed Dozer Line
- - - - - Completed Hand Line
- R - R - R - R Road as Completed Line
- - - - - Planned Fire Line
- ▭ Closure Area
- ▭ State Boundary
- ▭ Temporary Flight Restriction - Includes Unmanned Aerial Vehicles (Drones)
- ▭ Fire Perimeter
- ▭ Uncontrolled Fire Edge

This inset map shows the state of Montana with a red box highlighting the location of the Lolo Peak area in the southeastern part of the state, near the town of Stevensville.