



# Lolo Peak Fire

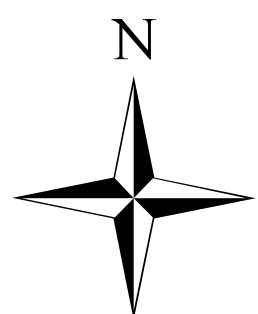
## MT-LNF-001288

### Briefing Map

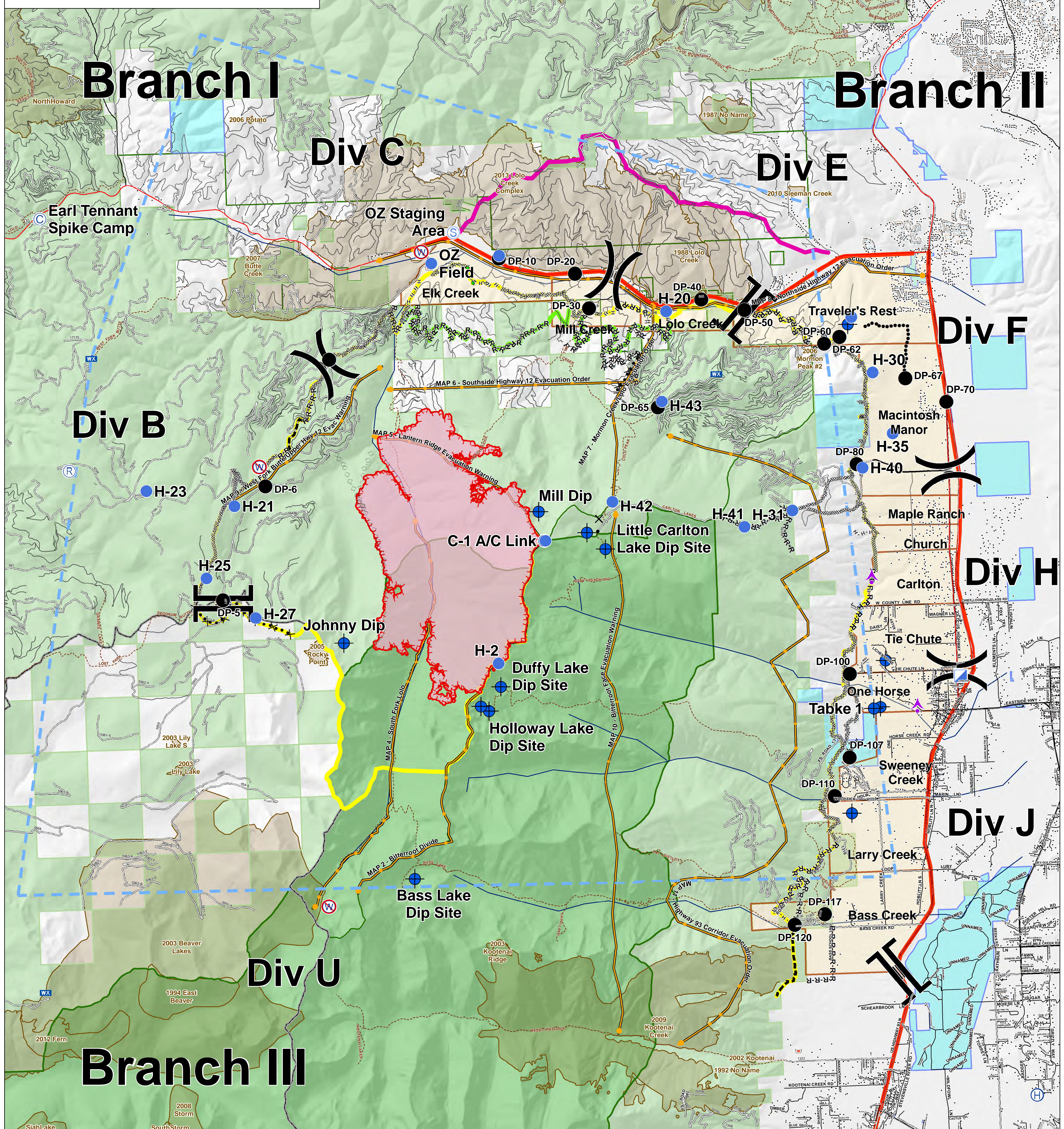
8/8/2017

7,292 acres

IR perimeter 8/6/2017 @ 2216



0 1 2 4 Miles



Drop Point	Camp	Repeater	Branch Break	Planned Fire Line	County	Trails	Administrative Forest
Helispot	Helibase	Retardant/Mud Pit	Completed Dozer Line	Planned Secondary Line	Local Roads	Structures	Wilderness
Dip Site	ICP	Staging Area	Completed Hand Line	Uncontrolled Fire Edge	Primary Line	Evacuation Zones	Other Federal
Aerial Hazard	Lookout	Restricted Water Source	R-R-R Road as Completed Line	TFR	Alternate Line	Values At Risk Bull Trout Streams	State
Mobile Weather Unit	Division Break	Completed Plow Line	Management Action Points	Highway	Contingency Line	US Forest Service	Clearwater National Forest
		Proposed Dozer Line	Emergency Line	Trails	Fire History 1980 - Present		

