



Lolo Peak Fire

MT-LNF-001288

IAP Map, Page 1

8/8/2017

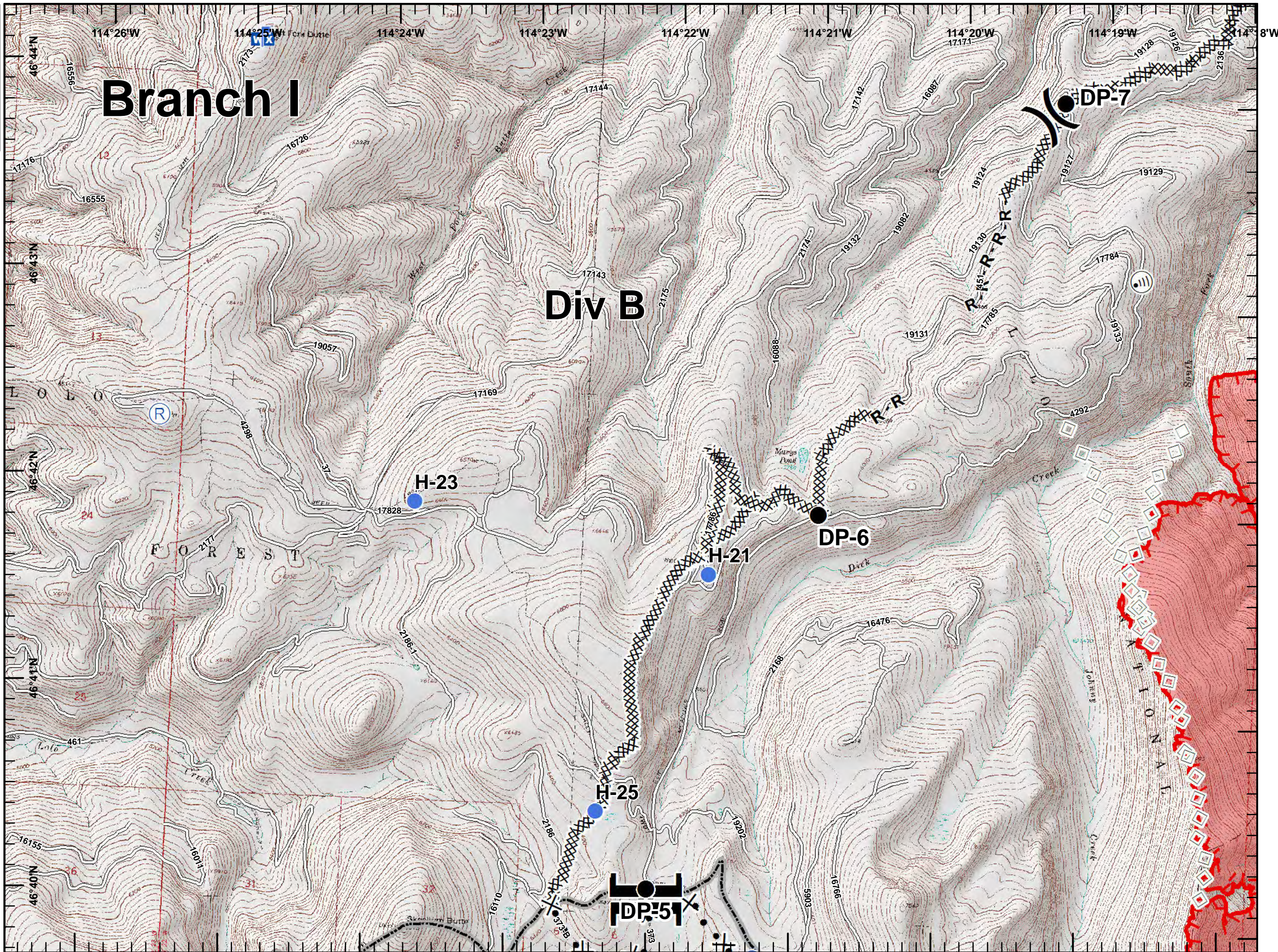
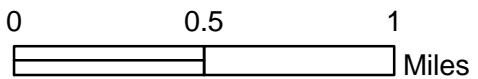


7,292 acres, IR Perimeter as of 8/6/2017 @ 2216

Branch I

Div B

- Drop Point
- Helispot
- Ⓜ Internet Access
- └ Lookout
- WX Mobile Weather Unit
- Ⓡ Repeater
-) Division Break
- || Branch Break
- XXXXX Completed Dozer Line
- R - R Road as Completed Line
- ⊗ Proposed Dozer Line
- Aerial Retardant Drop
- └ Uncontrolled Fire Edge
- Roads
- ▭ State Boundary
- ▭ Wildfire Daily Fire Perimeter



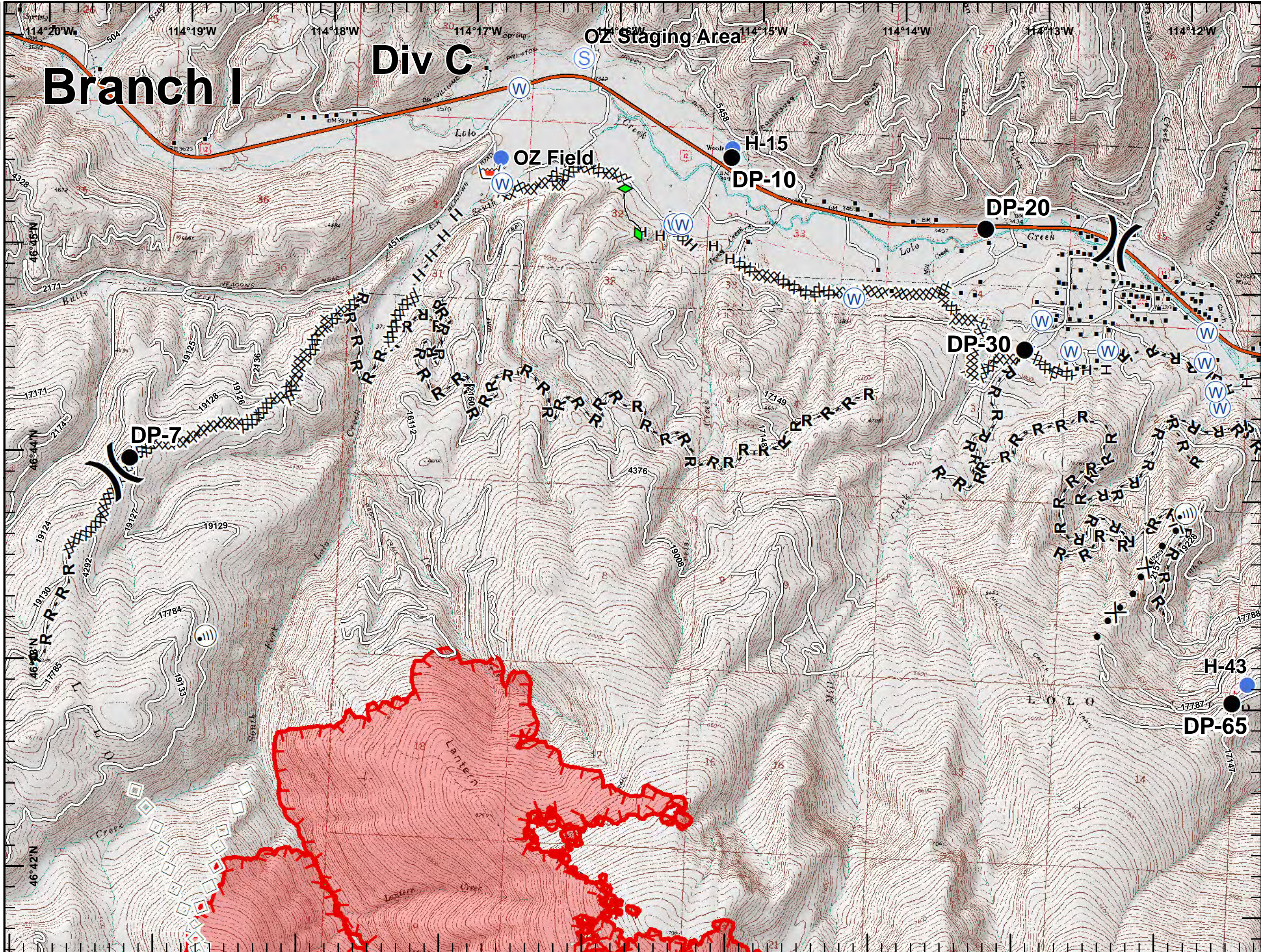


Lolo Peak Fire
 MT-LNF-001288
IAP Map, Page 2
 8/8/2017

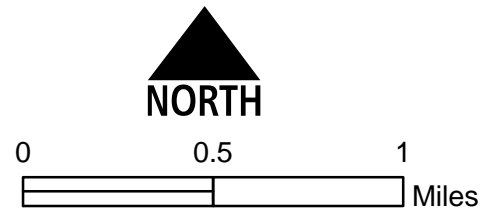


7,292 acres, IR Perimeter
 as of 8/6/2017 @ 2216

Branch I Div C



- Drop Point
- Helispot
- Ⓜ Internet Access
- ☒ Retardant/Mud Pit
- Ⓢ Staging Area
- Ⓦ Water Source
-) Division Break
- Structures
- XXXXX Completed Dozer Line
- H - H Completed Hand Line
- R - R Road as Completed Line
- ◆ Completed Plow Line
- ⊗ Proposed Dozer Line
- Aerial Retardant Drop
- ▬ Uncontrolled Fire Edge
- ▬ Interstate and Highways
- ▬ Roads
- ▭ State Boundary
- ▭ Wildfire Daily Fire Perimeter

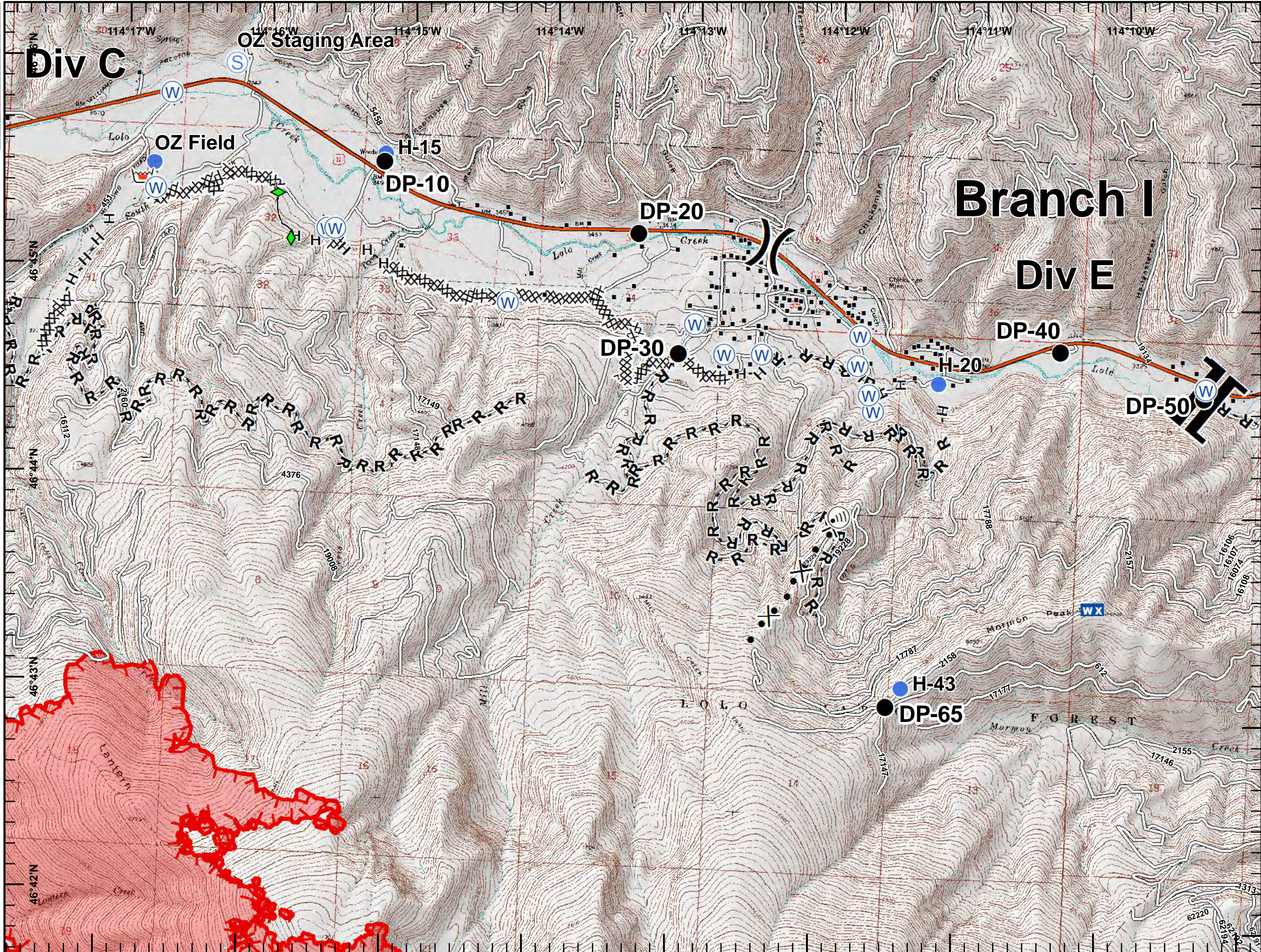




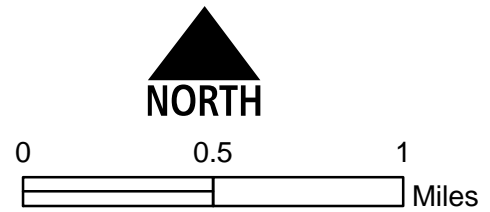
Lolo Peak Fire
 MT-LNF-001288
IAP Map, Page 3
 8/8/2017



7,292 acres, IR Perimeter
 as of 8/6/2017 @ 2216



- Drop Point
- Helispot
- Ⓜ Internet Access
- WX Mobile Weather Unit
- ☒ Retardant/Mud Pit
- Ⓢ Staging Area
- Ⓜ Water Source
-) Division Break
- || Branch Break
- Structures
- XXXXX Completed Dozer Line
- H - H Completed Hand Line
- R - R Road as Completed Line
- ◆ Completed Plow Line
- ⊗ Proposed Dozer Line
- ▬ Uncontrolled Fire Edge
- Interstate and Highways
- Roads
- ▭ State Boundary
- ▭ Wildfire Daily Fire Perimeter

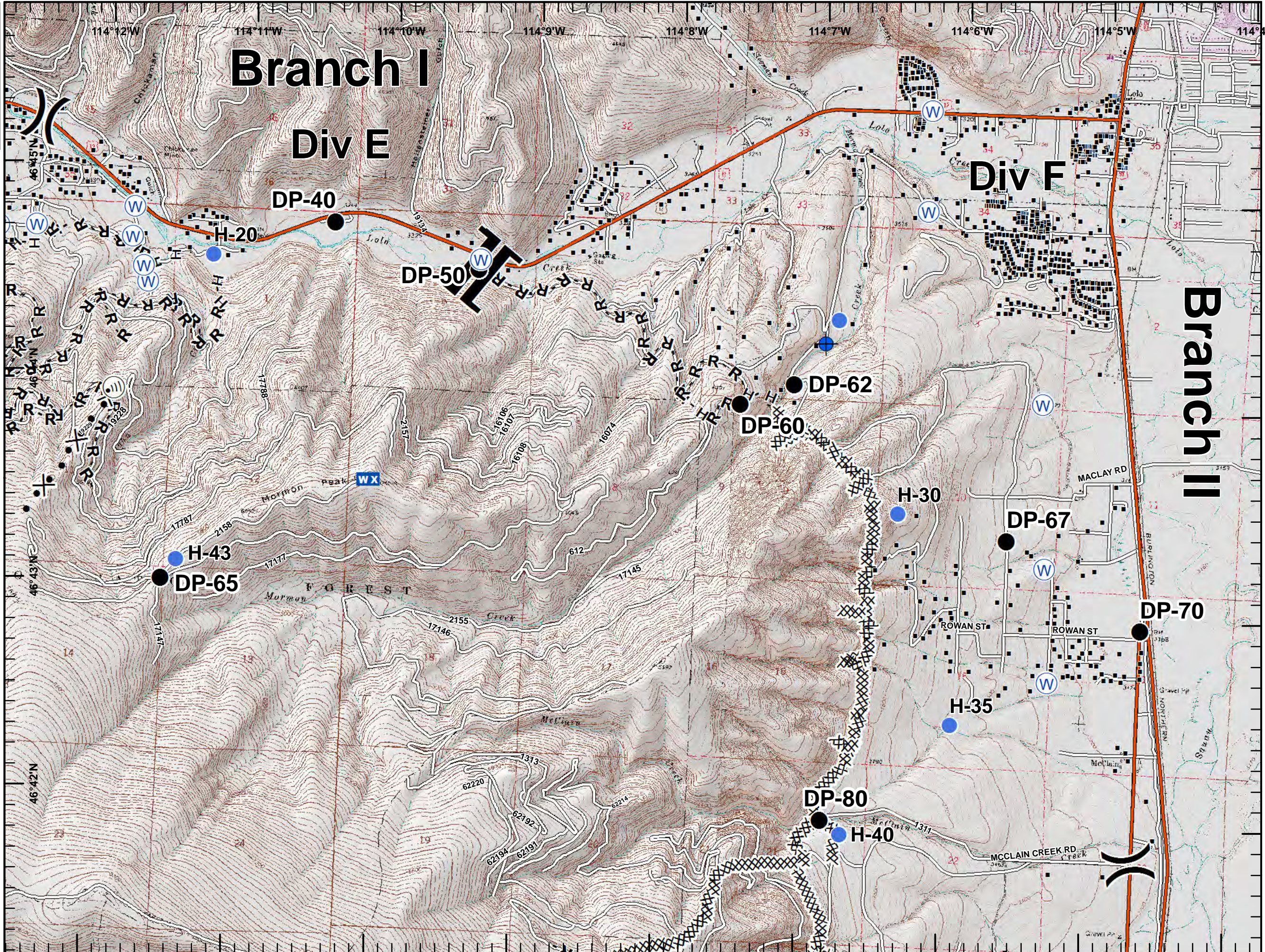




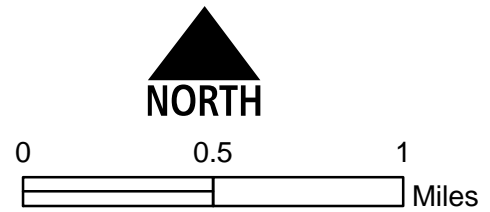
Lolo Peak Fire
 MT-LNF-001288
 IAP Map, Page 4
 8/8/2017



7,292 acres, IR Perimeter
 as of 8/6/2017 @ 2216



- Dip Site
- Drop Point
- Helispot
- Internet Access
- Mobile Weather Unit
- Water Source
- Division Break
- Branch Break
- Structures
- Completed Dozer Line
- Completed Hand Line
- Road as Completed Line
- Proposed Dozer Line
- Interstate and Highways
- Roads
- State Boundary

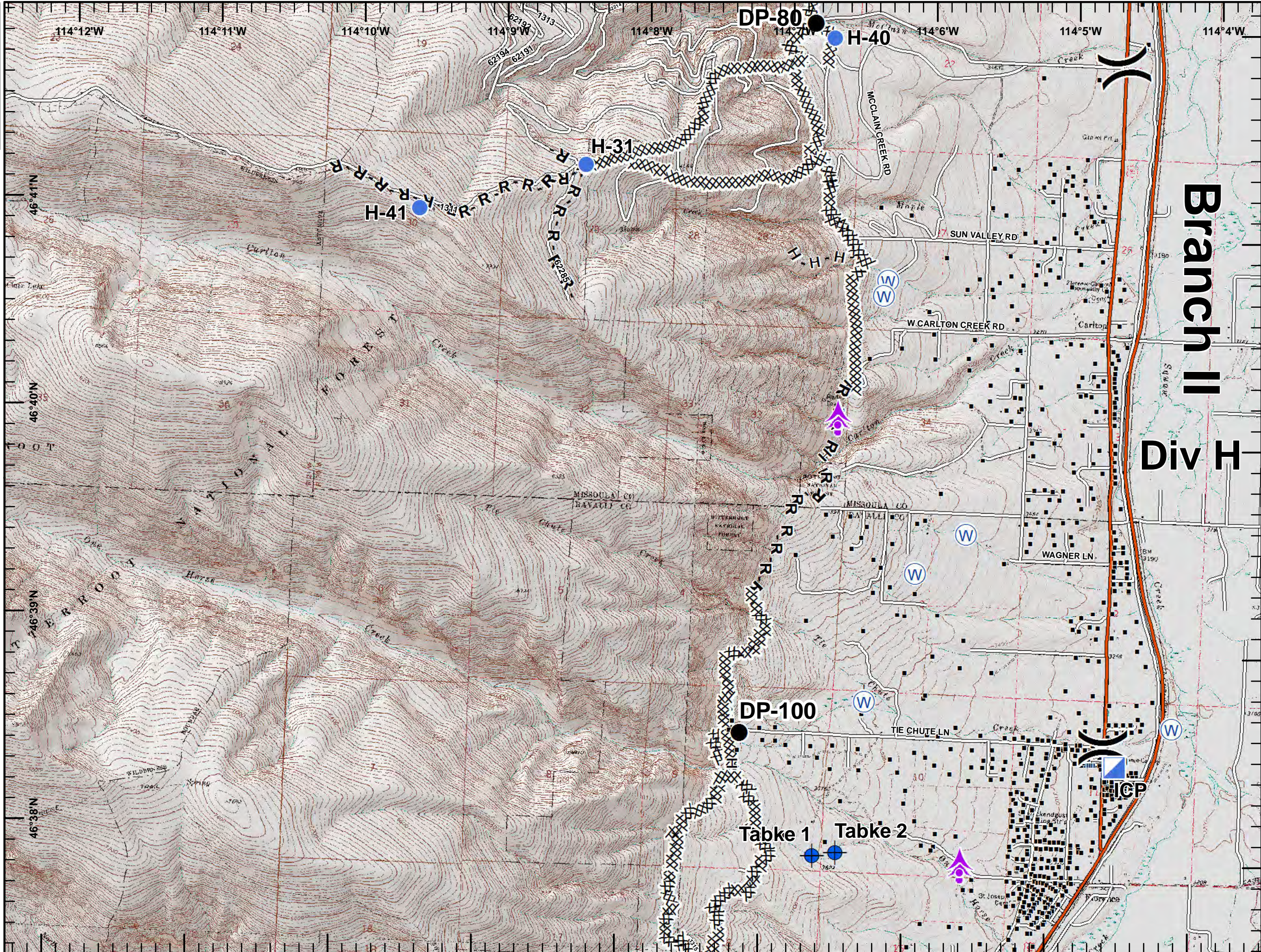




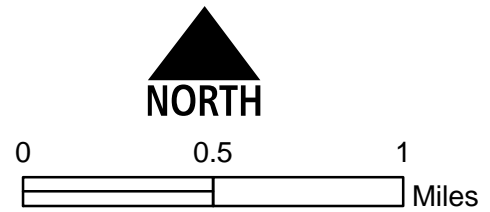
Lolo Peak Fire
 MT-LNF-001288
 IAP Map, Page 5
 8/8/2017



7,292 acres, IR Perimeter
 as of 8/6/2017 @ 2216



- Aerial Hazard
- Dip Site
- Drop Point
- Helispot
- ICP
- Water Source
- Division Break
- Structures
- Completed Dozer Line
- Completed Hand Line
- Road as Completed Line
- Interstate and Highways
- Roads
- State Boundary





Lolo Peak Fire

MT-LNF-001288

IAP Map, Page 6

8/8/2017



7,292 acres, IR Perimeter as of 8/6/2017 @ 2216

- Aerial Hazard
- Dip Site
- Drop Point
- ICP
- Water Source
- Division Break
- Structures

XXXXX Completed Dozer Line

H - H Completed Hand Line

R - R Road as Completed Line

X • Proposed Dozer Line

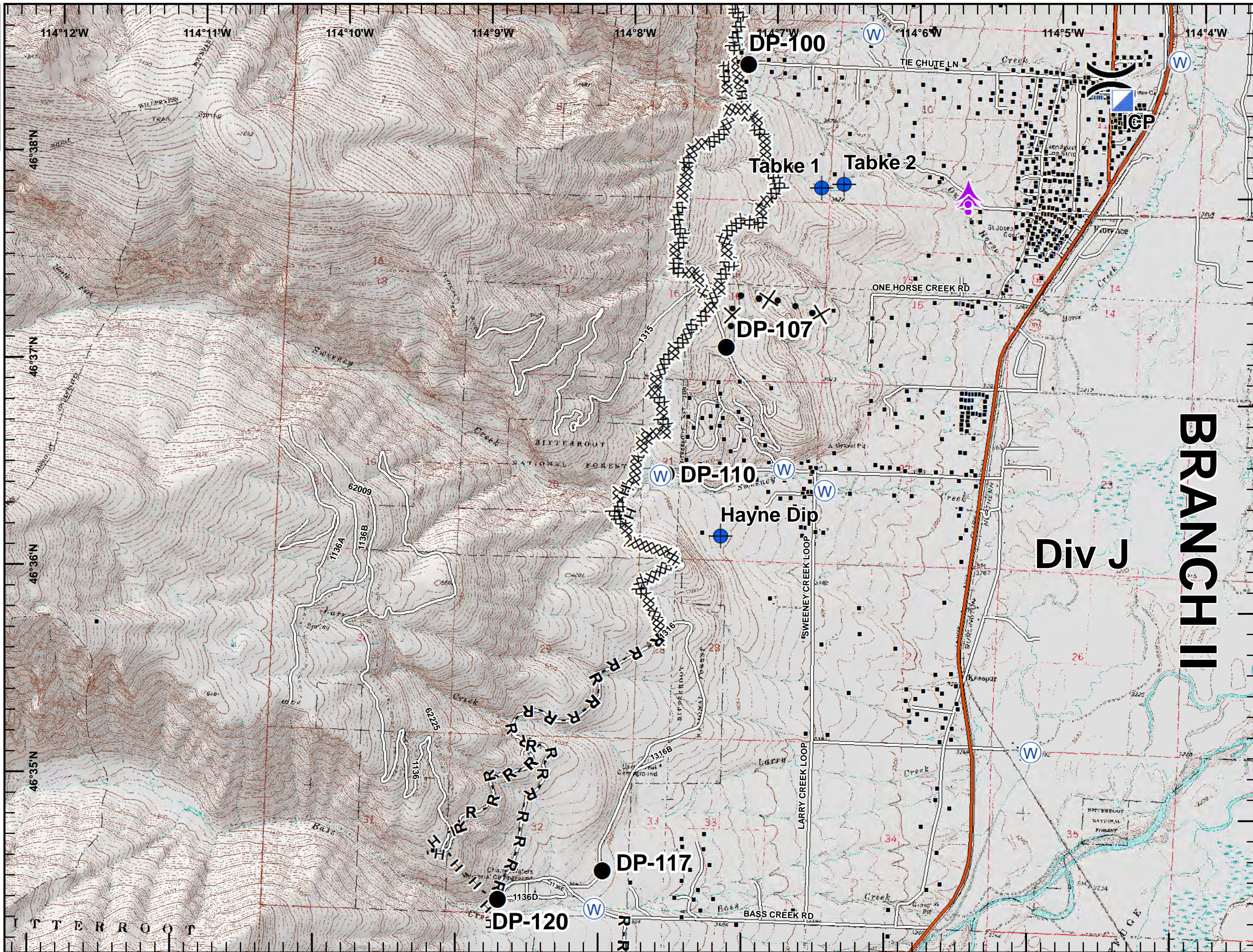
— Interstate and Highways

— Roads

▭ State Boundary



0 0.5 1 Miles



BRANCH II

Div J



Lolo Peak Fire

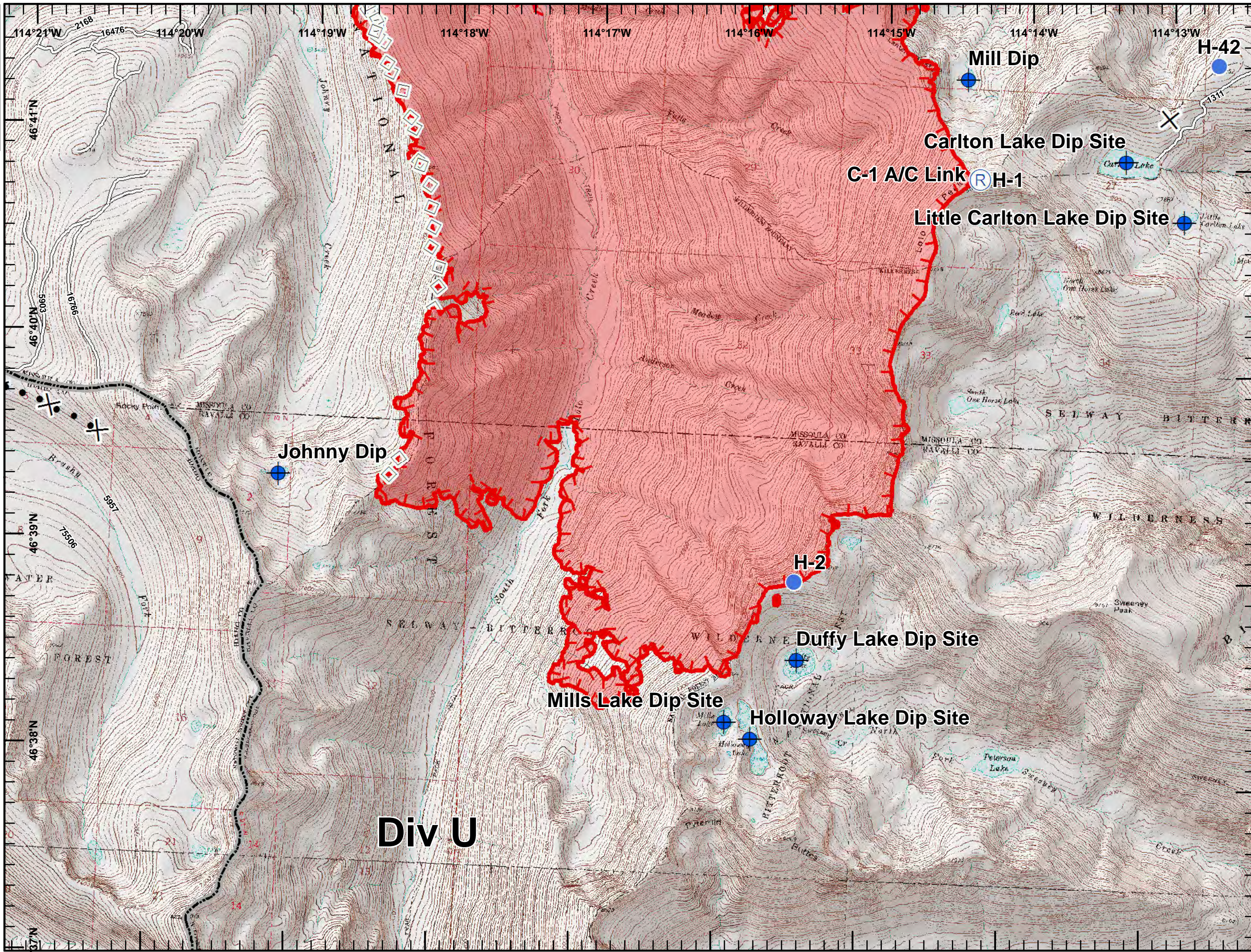
MT-LNF-001288

IAP Map, Page 7

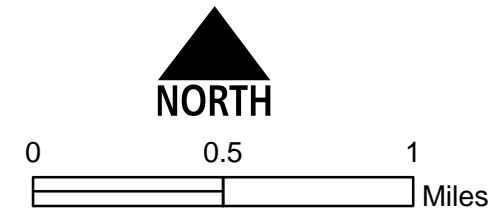
8/8/2017



7,292 acres, IR Perimeter as of 8/6/2017 @ 2216



- Dip Site
- Helispot
- Repeater
- Proposed Dozer Line
- Aerial Retardant Drop
- Uncontrolled Fire Edge
- Roads
- State Boundary
- Wildfire Daily Fire Perimeter



Div U