



**Lolo Peak Fire**  
 MT-LNF-001288  
**Contingency Group**  
 Page 1  
 8/9/2017

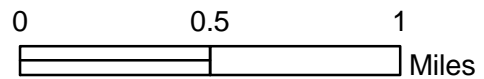


7,453 acres, IR Perimeter  
 as of 8/7/2017 @ 2357

# Branch I

## Div B

- Drop Point
- Helispot
- Ⓜ Internet Access
- Ⓡ Repeater
- ) Division Break
- || Branch Break
- 200ft Contours
- XXXXX Completed Dozer Line
- R - R Road as Completed Line
- ⊗ Proposed Dozer Line
- ⊕ Aerial Retardant Drop
- ▬ Uncontrolled Fire Edge
- ▬ Roads
- ▭ State Boundary
- ▭ Wildfire Daily Fire Perimeter



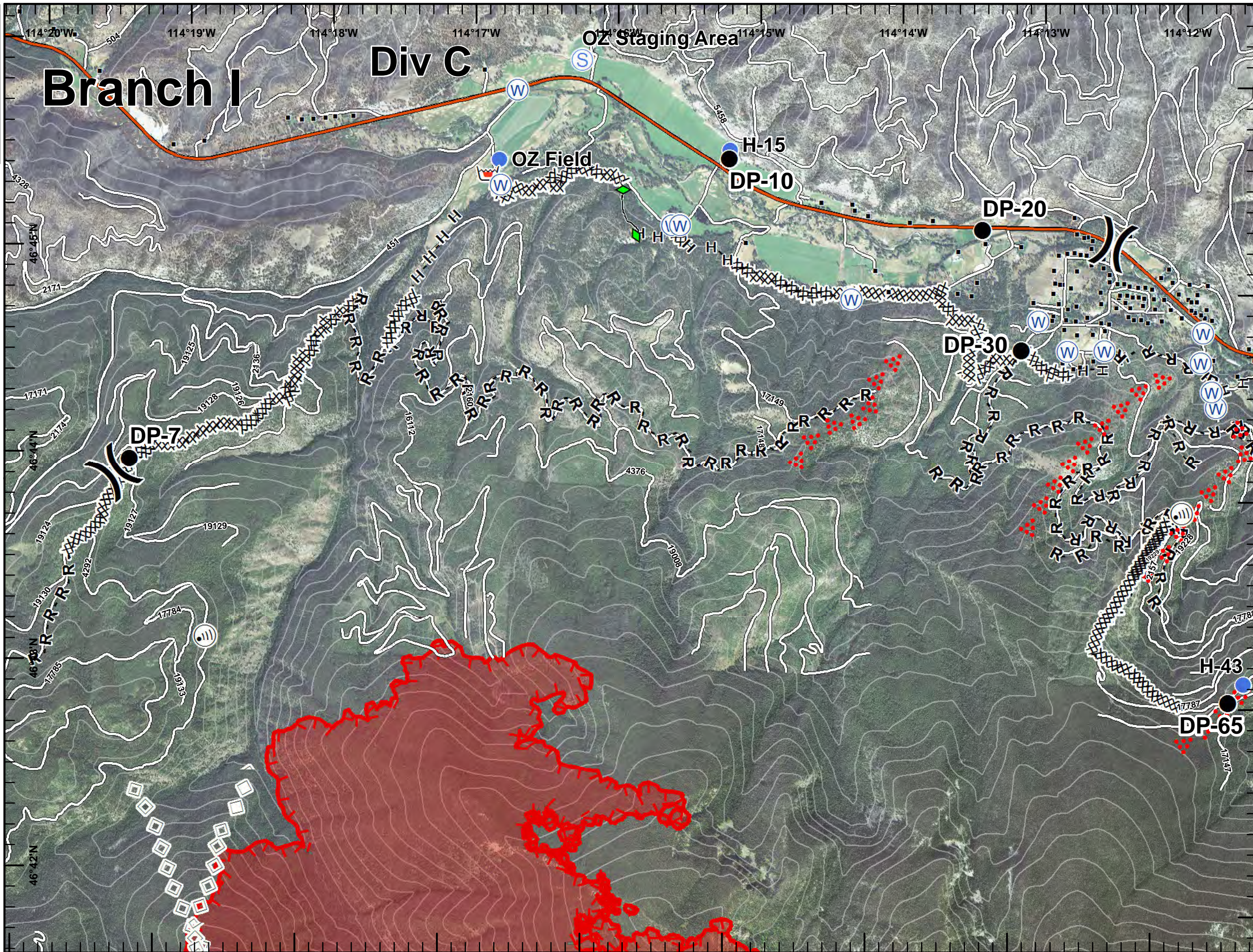




**Lolo Peak Fire**  
 MT-LNF-001288  
**Contingency Group**  
 Page 2  
 8/9/2017



7,453 acres, IR Perimeter  
 as of 8/7/2017 @ 2357



- Drop Point
- Helispot
- Ⓜ Internet Access
- ☒ Retardant/Mud Pit
- Ⓢ Staging Area
- Ⓦ Water Source
- ) Division Break
- Structures
- 200ft Contours
- XXXXX Completed Dozer Line
- H - H Completed Hand Line
- R - R Road as Completed Line
- ◆ Completed Plow Line
- ⊗ Proposed Dozer Line
- Aerial Ignition
- Aerial Retardant Drop
- ▬ Uncontrolled Fire Edge
- Interstate and Highways
- Roads
- ▭ State Boundary
- ▭ Wildfire Daily Fire Perimeter

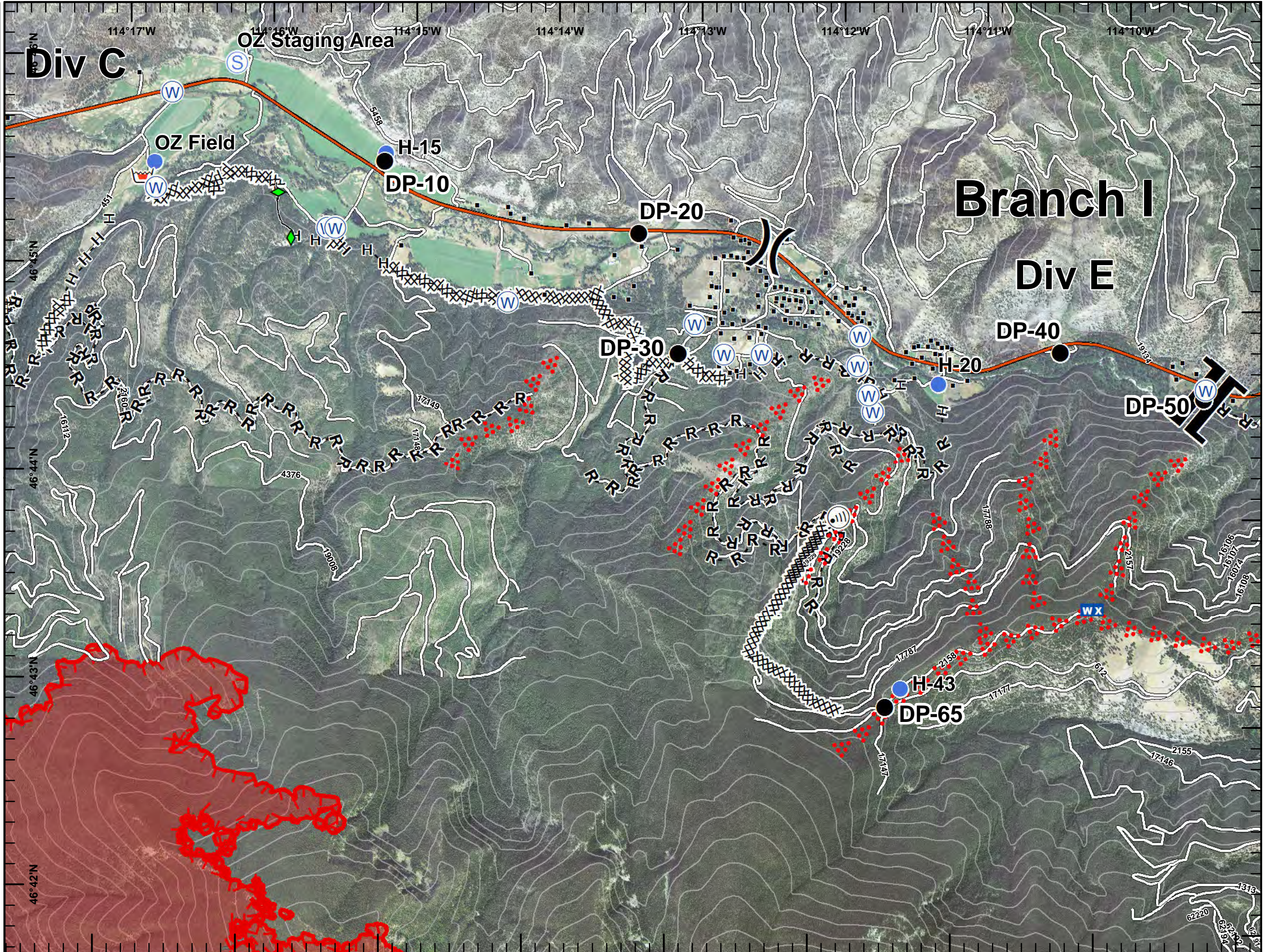




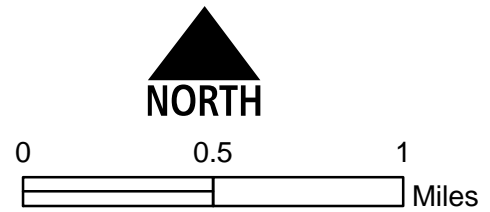
**Lolo Peak Fire**  
 MT-LNF-001288  
**Contingency Group**  
 Page 3  
 8/9/2017



7,453 acres, IR Perimeter  
 as of 8/7/2017 @ 2357



- Drop Point
- Helispot
- Ⓜ Internet Access
- WX Mobile Weather Unit
- Retardant/Mud Pit
- Ⓢ Staging Area
- Ⓦ Water Source
- ) Division Break
- || Branch Break
- Structures
- 200ft Contours
- XXXXX Completed Dozer Line
- H - H Completed Hand Line
- R - R Road as Completed Line
- ◆ Completed Plow Line
- ⊗ Proposed Dozer Line
- Aerial Ignition
- Uncontrolled Fire Edge
- Interstate and Highways
- Roads
- State Boundary
- Wildfire Daily Fire Perimeter



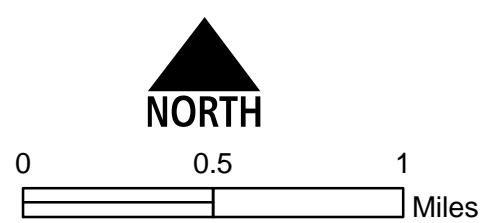




7,453 acres, IR Perimeter  
 as of 8/7/2017 @ 2357



- ◆ Dip Site
- Drop Point
- Helispot
- Ⓜ Internet Access
- WX Mobile Weather Unit
- Ⓜ Water Source
- ) Division Break
- || Branch Break
- Structures
- 200ft Contours
- XXXXX Completed Dozer Line
- H - H Completed Hand Line
- R - R Road as Completed Line
- X • Proposed Dozer Line
- Aerial Ignition
- Interstate and Highways
- Roads
- ▭ State Boundary





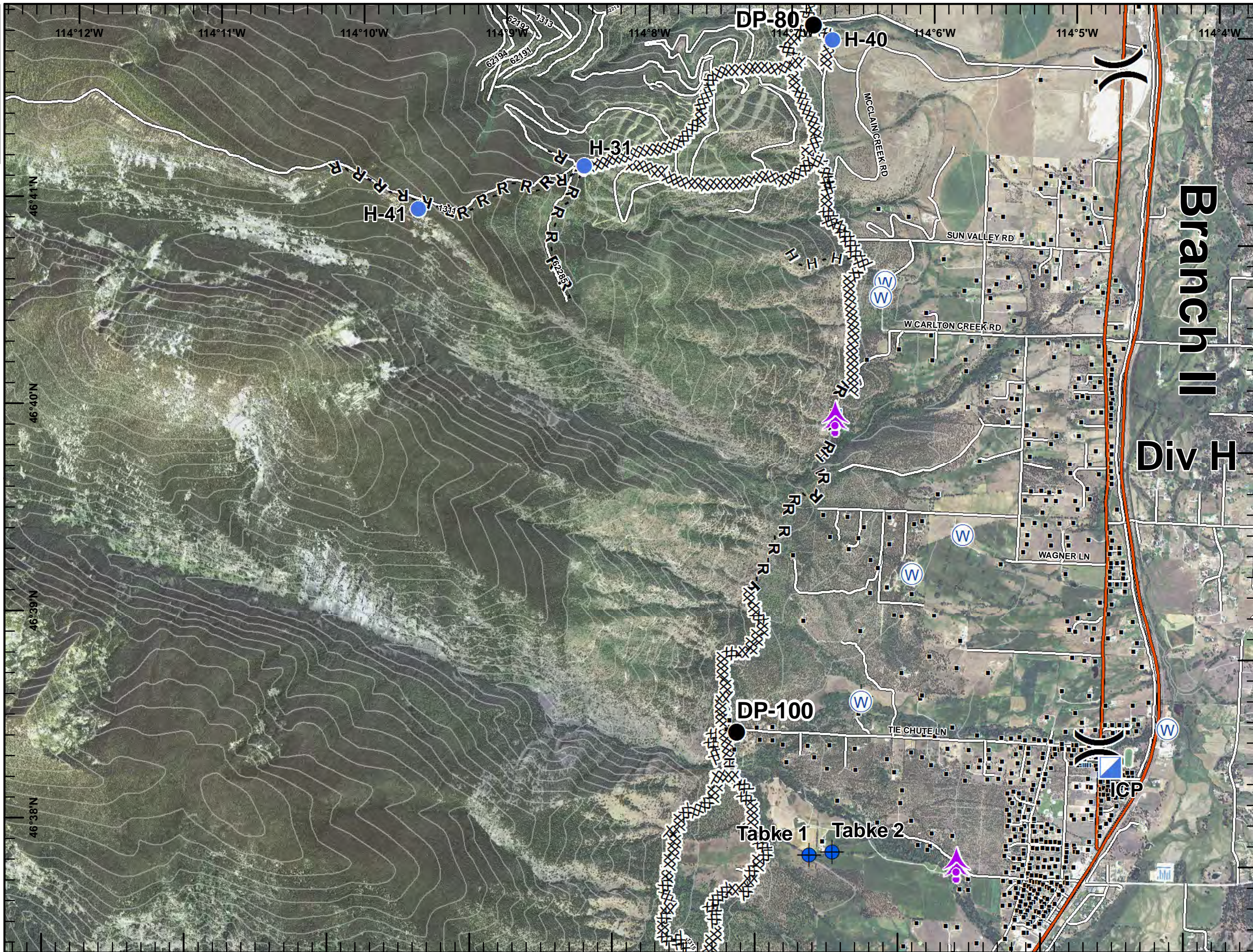
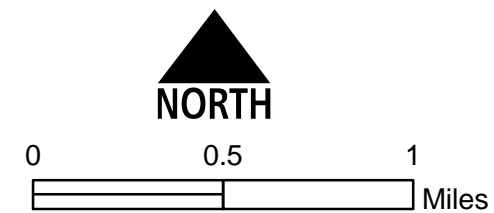


**Lolo Peak Fire**  
 MT-LNF-001288  
**Contingency Group**  
**Page 5**  
 8/9/2017



7,453 acres, IR Perimeter  
 as of 8/7/2017 @ 2357

- Aerial Hazard
- Dip Site
- Drop Point
- Helispot
- ICP
- Water Source
- Division Break
- Structures
- 200ft Contours
- Completed Dozer Line
- H - H Completed Hand Line
- R - R Road as Completed Line
- Interstate and Highways
- Roads
- State Boundary



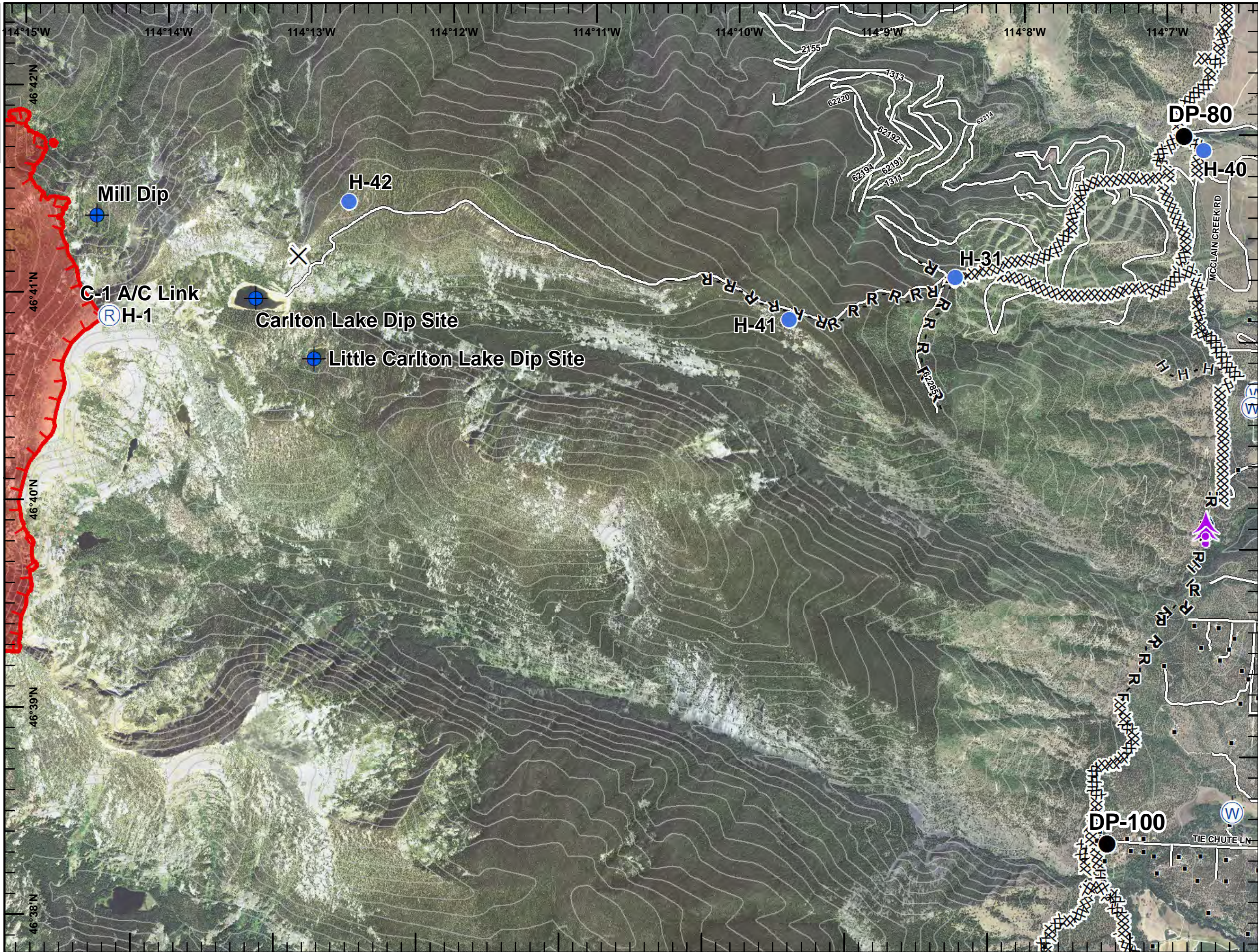




**Lolo Peak Fire**  
 MT-LNF-001288  
 Contingency Group  
 Page 6  
 8/9/2017



7,453 acres, IR Perimeter  
 as of 8/7/2017 @ 2357



- Aerial Hazard
- Dip Site
- Drop Point
- Helispot
- Repeater
- Water Source
- Structures
- 200ft Contours
- Completed Dozer Line
- H - H Completed Hand Line
- R - R Road as Completed Line
- Proposed Dozer Line
- Uncontrolled Fire Edge
- Roads
- State Boundary
- Wildfire Daily Fire Perimeter

