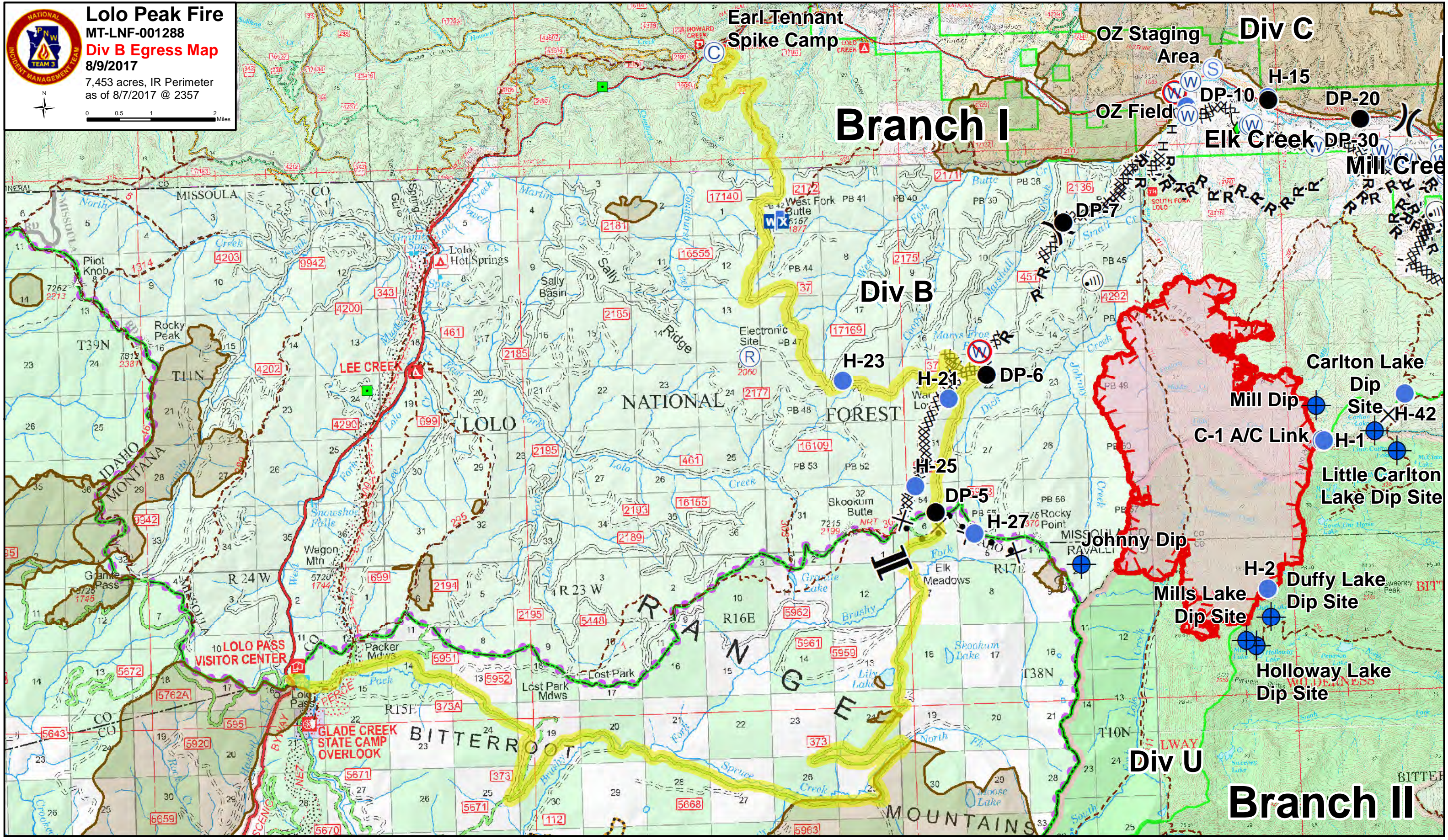


Lolo Peak Fire
 MT-LNF-001288
Div B Egress Map
 8/9/2017
 7,453 acres, IR Perimeter
 as of 8/7/2017 @ 2357



- | | | | | | | | | |
|--------------|-------------------|-----------------------|---------------------|---------------------------|-------------------------|----------------------------|--------------------------|---------------------------------|
| Ⓒ Camp | ● Helispot | ⚡ Lookout | 🛑 Retardant/Mud Pit | Ⓜ Restricted Water Source | 🟡 Egress Routes | R - Road as Completed Line | ⓧ Proposed Dozer Line | 🟠 Wildfire Daily Fire Perimeter |
| Ⓧ Dip Site | 📶 Internet Access | 🚚 Mobile Weather Unit | Ⓢ Staging Area |) Division Break | ⓧ Completed Dozer Line | 🟢 Completed Plow Line | 🔴 Uncontrolled Fire Edge | 🟤 Fire History 1980 - Present |
| ● Drop Point | 🟩 Landmark | Ⓡ Repeater | 🌊 Water Source | Branch Break | H - Completed Hand Line | ⓧ Trails | 🟩 Wilderness | |