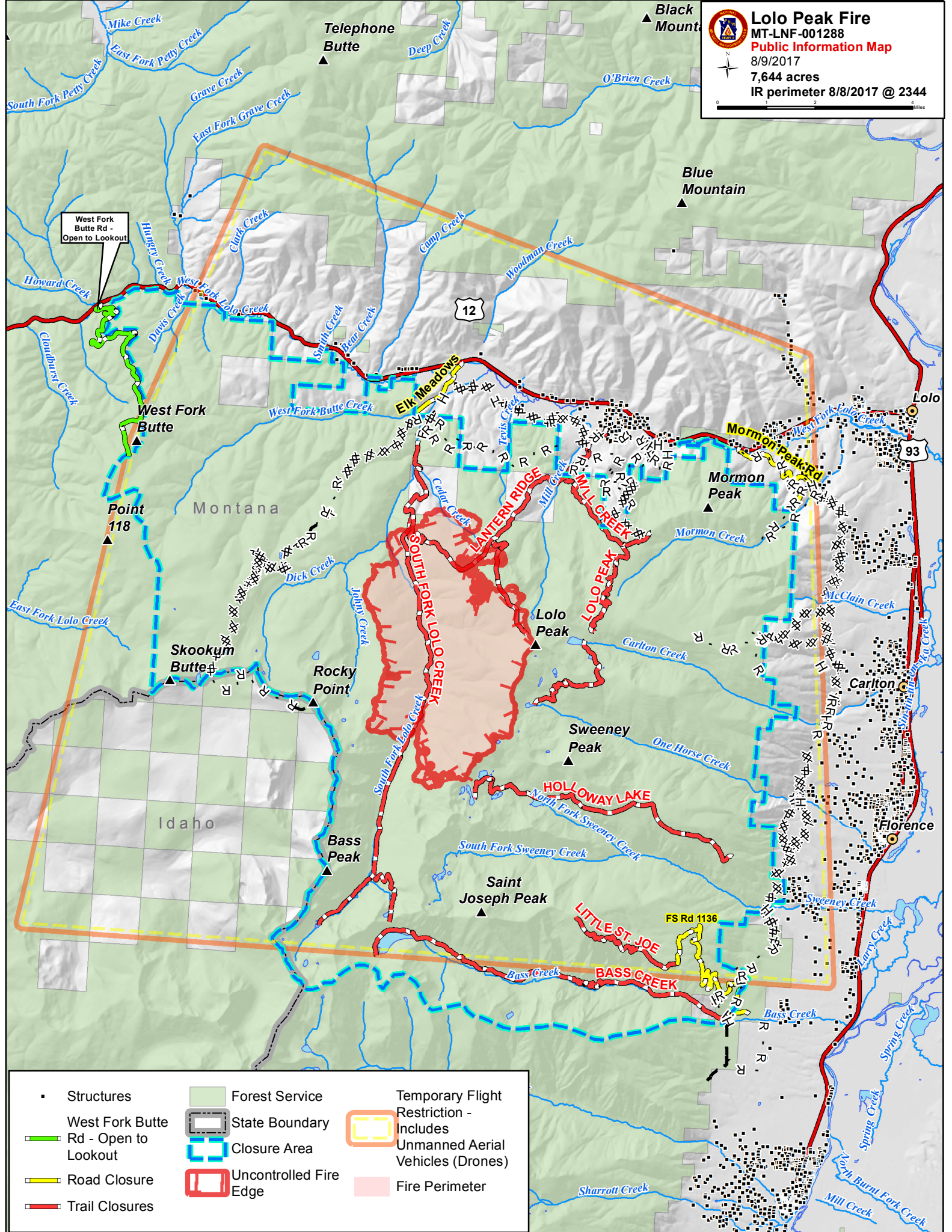




Lolo Peak Fire
 MT-LNF-001288
Public Information Map
 8/9/2017
 7,644 acres
 IR perimeter 8/8/2017 @ 2344



- Structures
- West Fork Butte Rd - Open to Lookout
- Road Closure
- Trail Closures
- Forest Service
- State Boundary
- Closure Area
- Uncontrolled Fire Edge
- Temporary Flight Restriction - Includes Unmanned Aerial Vehicles (Drones)
- Fire Perimeter