



Lolo Peak Fire
 MT-LNF-001288
IAP Map, Page 1
 8/9/2017

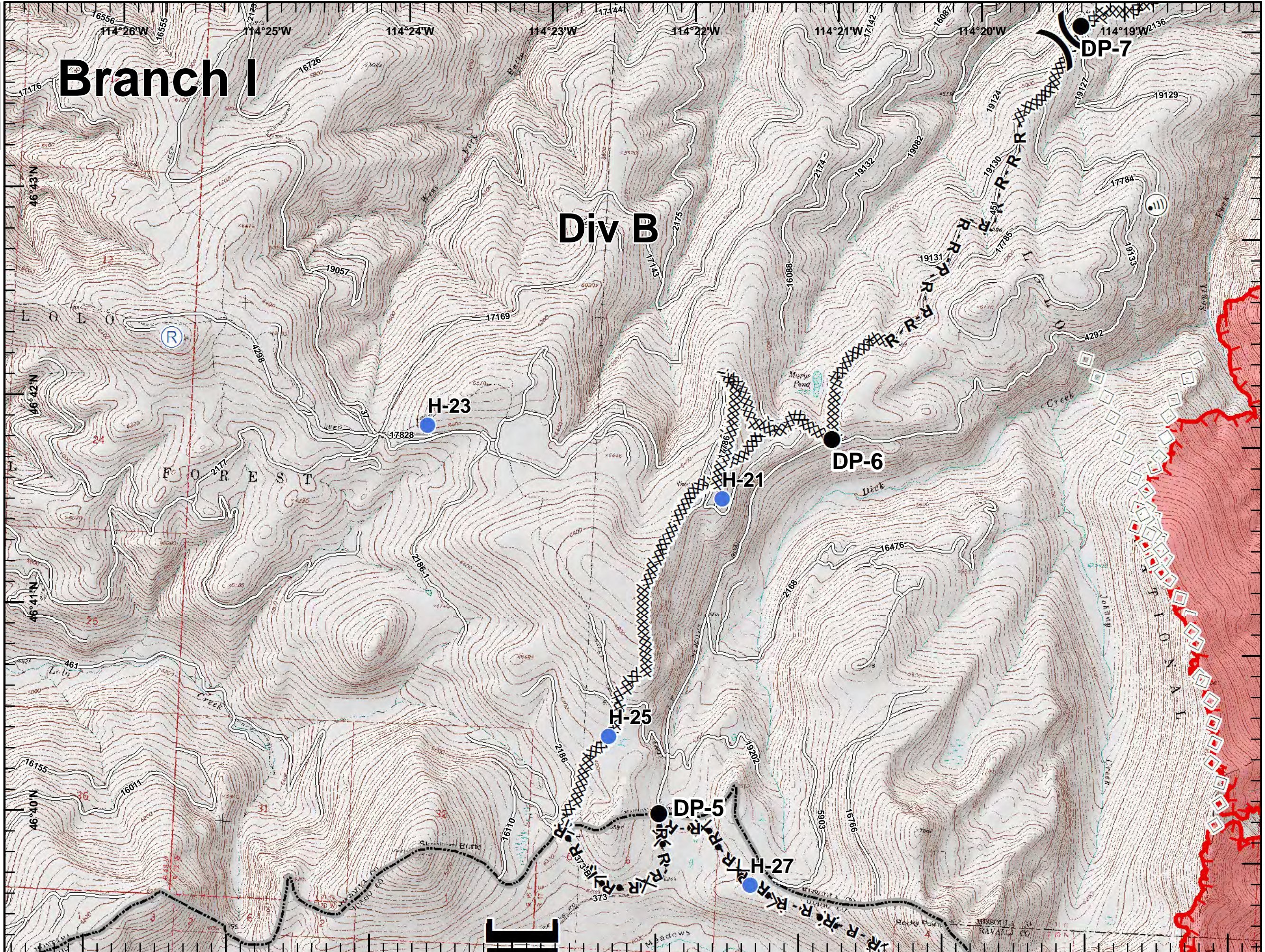
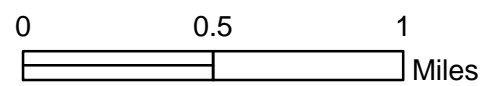


7,453 acres, IR Perimeter
 as of 8/7/2017 @ 2357

Branch I

Div B

- Drop Point
- Helispot
- Ⓜ Internet Access
- Ⓡ Repeater
-) Division Break
- || Branch Break
- XXXXX Completed Dozer Line
- R - R Road as Completed Line
- ⊗ Proposed Dozer Line
- Aerial Retardant Drop
- ▬ Uncontrolled Fire Edge
- ▬ Roads
- ▭ State Boundary
- ▭ Wildfire Daily Fire Perimeter





Lolo Peak Fire
 MT-LNF-001288
IAP Map, Page 2
 8/9/2017



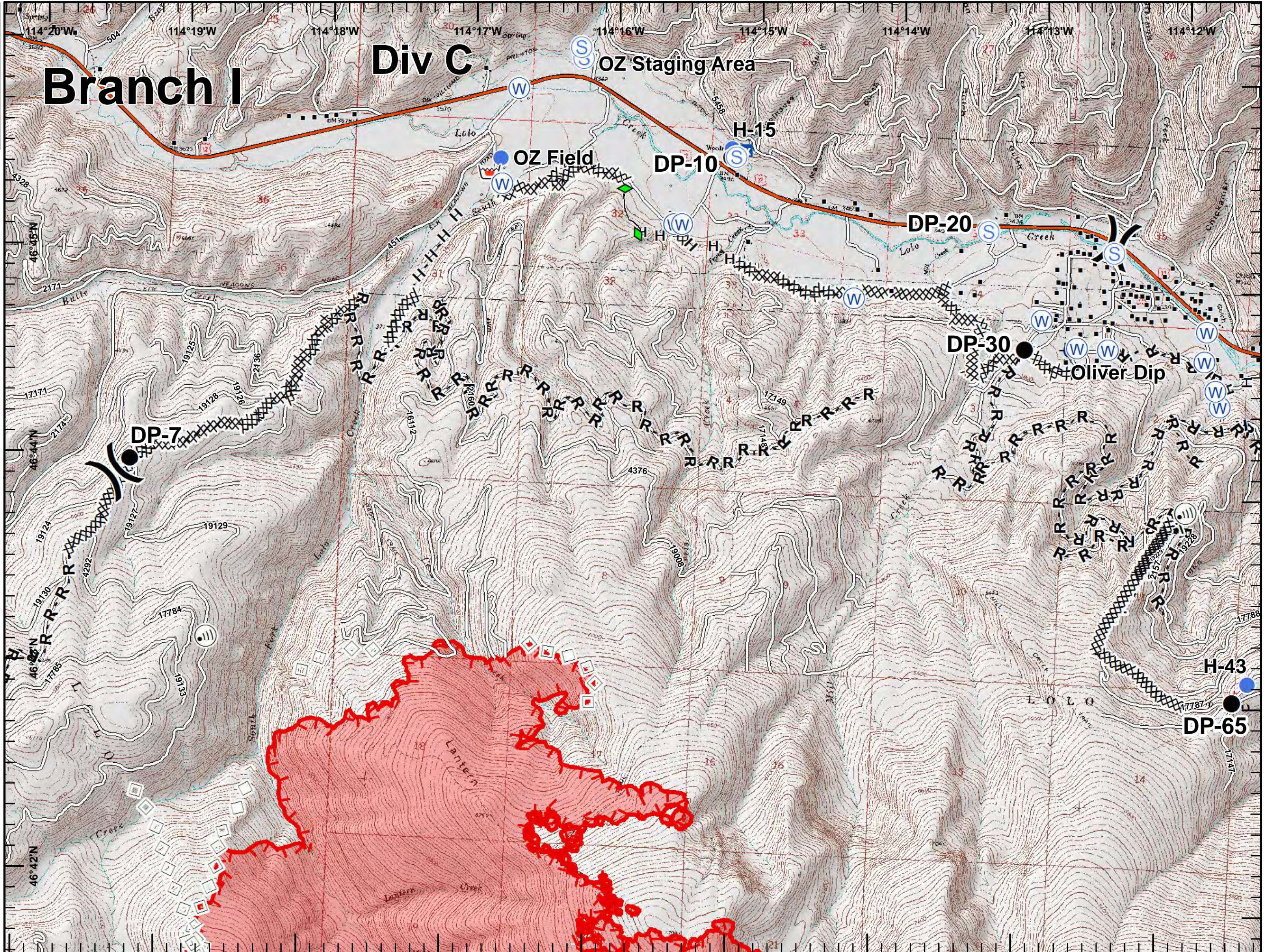
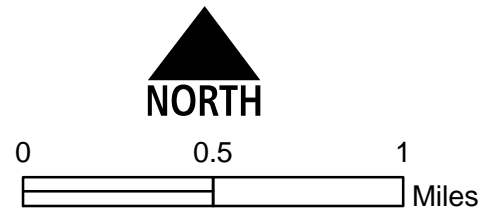
7,453 acres, IR Perimeter
 as of 8/7/2017 @ 2357

Branch I

Div C

OZ Staging Area

- Dip Site
- Drop Point
- Helispot
- Internet Access
- Mobile Weather Unit
- Retardant/Mud Pit
- Staging Area
- Water Source
- Division Break
- Structures
- Completed Dozer Line
- Completed Hand Line
- Road as Completed Line
- Completed Plow Line
- Proposed Dozer Line
- Aerial Retardant Drop
- Uncontrolled Fire Edge
- Interstate and Highways
- Roads
- State Boundary
- Wildfire Daily Fire Perimeter





Lolo Peak Fire

MT-LNF-001288

IAP Map, Page 3

8/9/2017



7,453 acres, IR Perimeter as of 8/7/2017 @ 2357

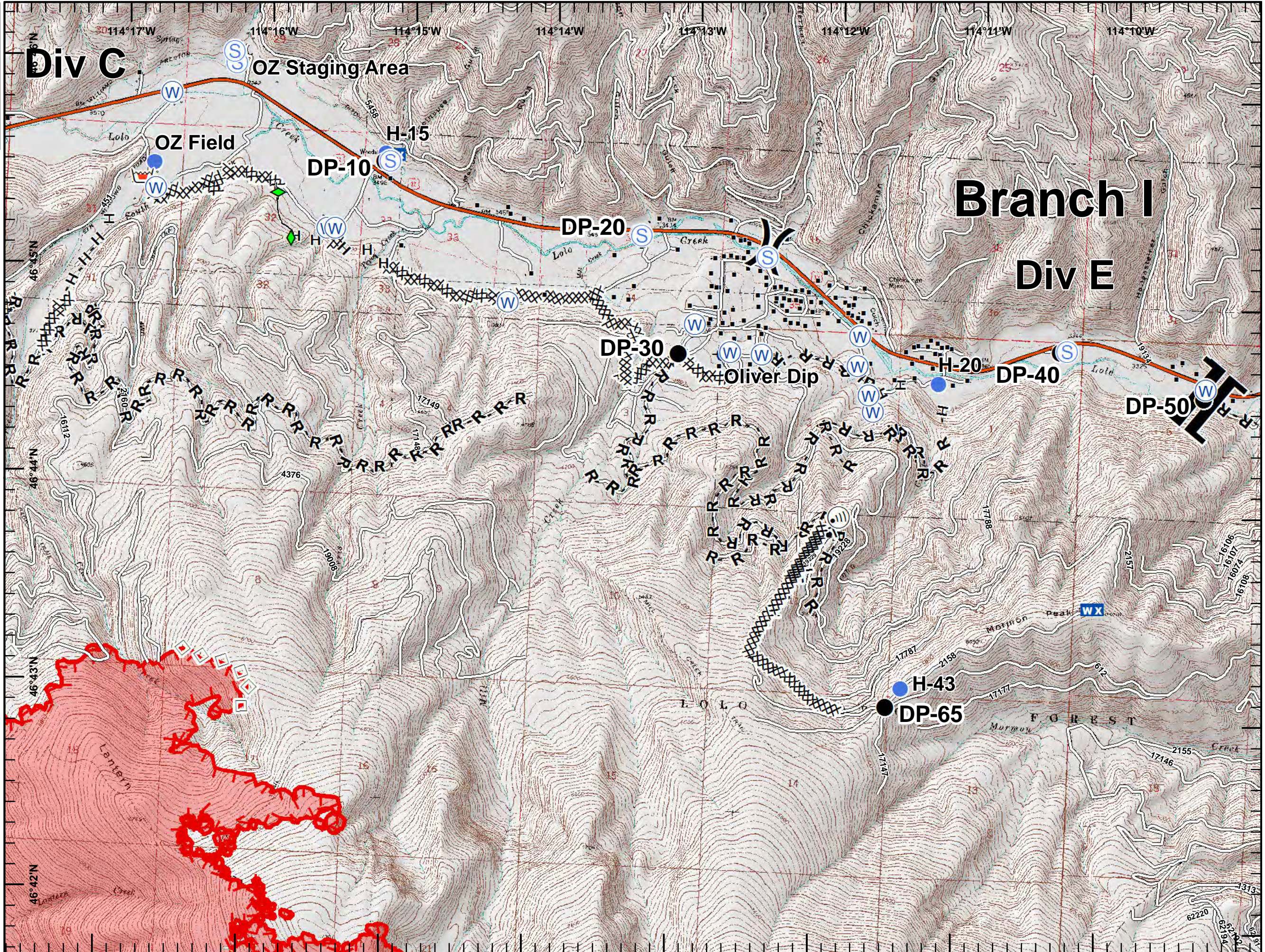
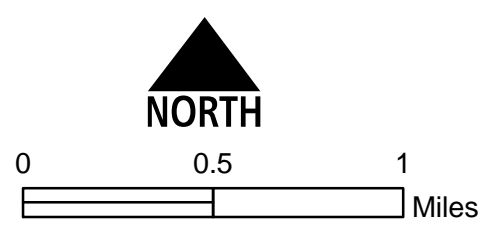
Div C

OZ Staging Area

Branch I

Div E

- Dip Site
- Drop Point
- Helispot
- Internet Access
- Mobile Weather Unit
- Retardant/Mud Pit
- Staging Area
- Water Source
- Division Break
- Branch Break
- Structures
- Completed Dozer Line
- Completed Hand Line
- Road as Completed Line
- Completed Plow Line
- Proposed Dozer Line
- Aerial Retardant Drop
- Uncontrolled Fire Edge
- Interstate and Highways
- Roads
- State Boundary
- Wildfire Daily Fire Perimeter





Lolo Peak Fire

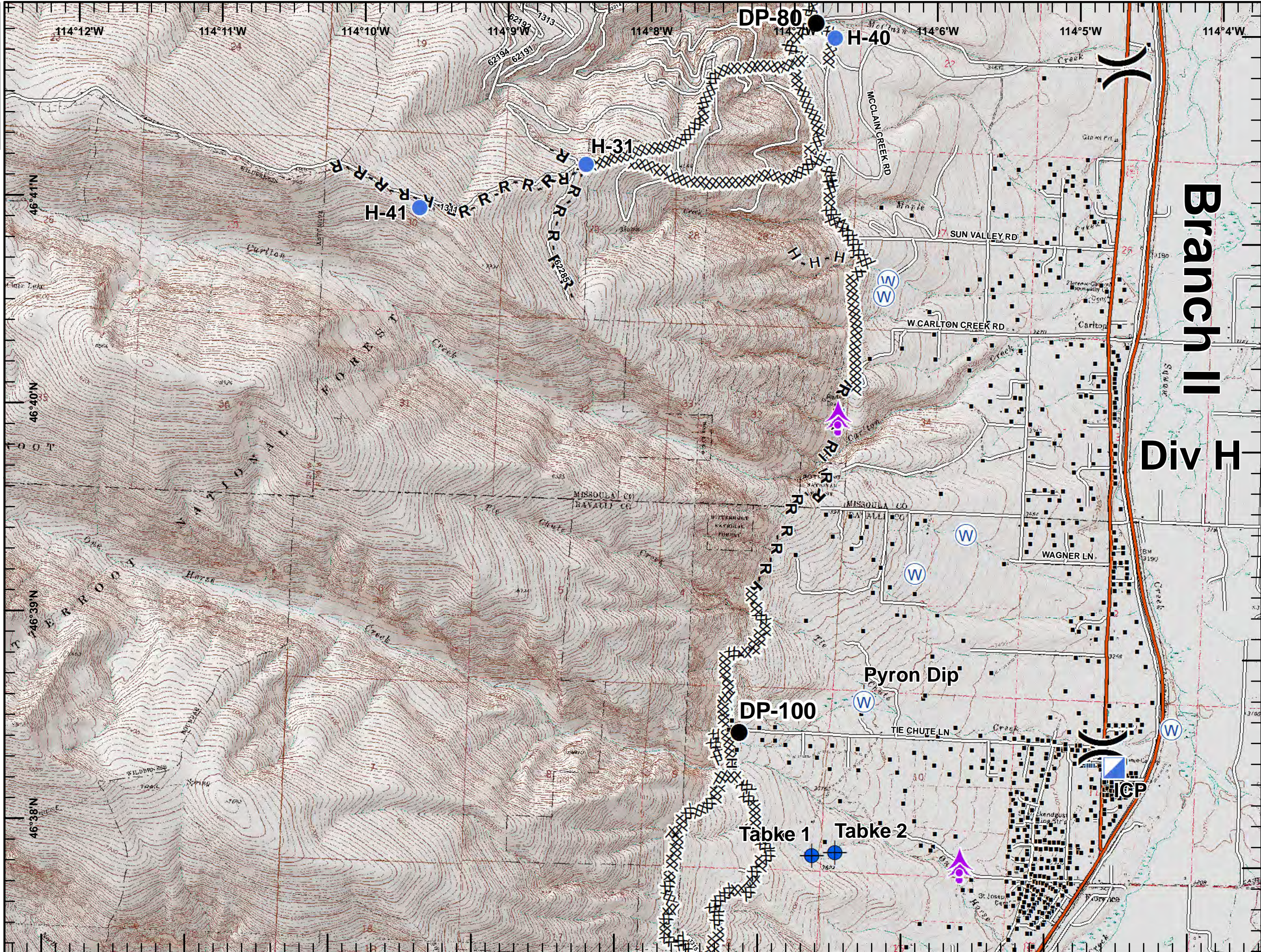
MT-LNF-001288

IAP Map, Page 5

8/9/2017

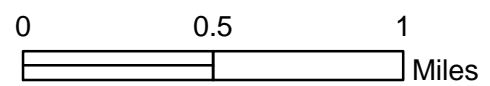


7,453 acres, IR Perimeter as of 8/7/2017 @ 2357



- Aerial Hazard
- Dip Site
- Drop Point
- Helispot
- ICP
- Water Source
- Division Break
- Structures

- Completed Dozer Line
- H - H Completed Hand Line
- R - R Road as Completed Line
- Interstate and Highways
- Roads
- State Boundary



Branch II
Div H

Pyron Dip

DP-100

Tabke 1

Tabke 2

ICP



Lolo Peak Fire

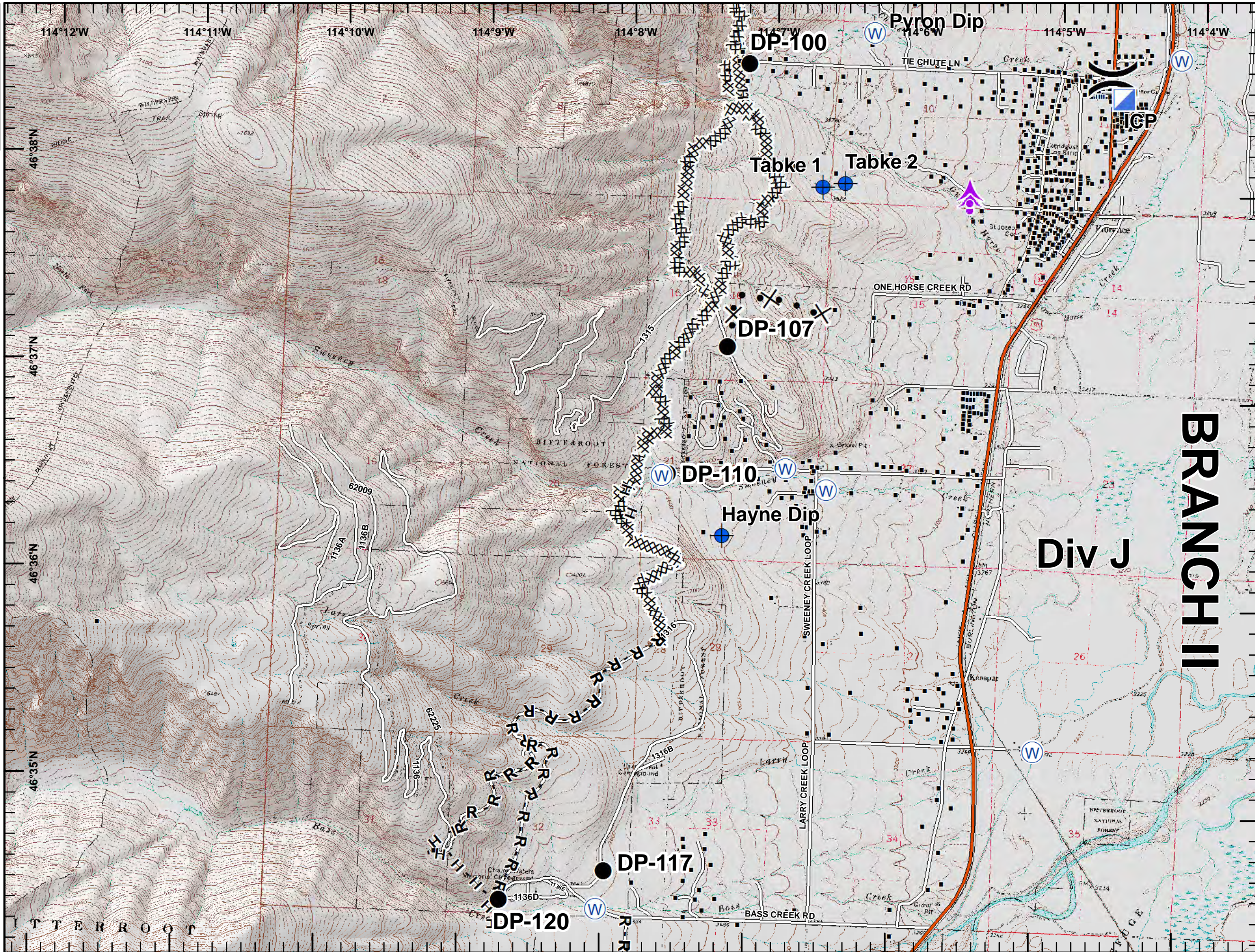
MT-LNF-001288

IAP Map, Page 6

8/9/2017

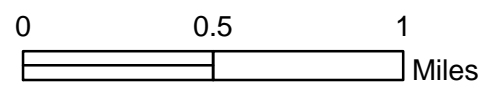


7,453 acres, IR Perimeter as of 8/7/2017 @ 2357



- Aerial Hazard
- Dip Site
- Drop Point
- ICP
- Water Source
- Division Break
- Structures

- Completed Dozer Line
- Completed Hand Line
- Road as Completed Line
- Proposed Dozer Line
- Interstate and Highways
- Roads
- State Boundary



BRANCH II

Div J

BITTERROOT



Lolo Peak Fire

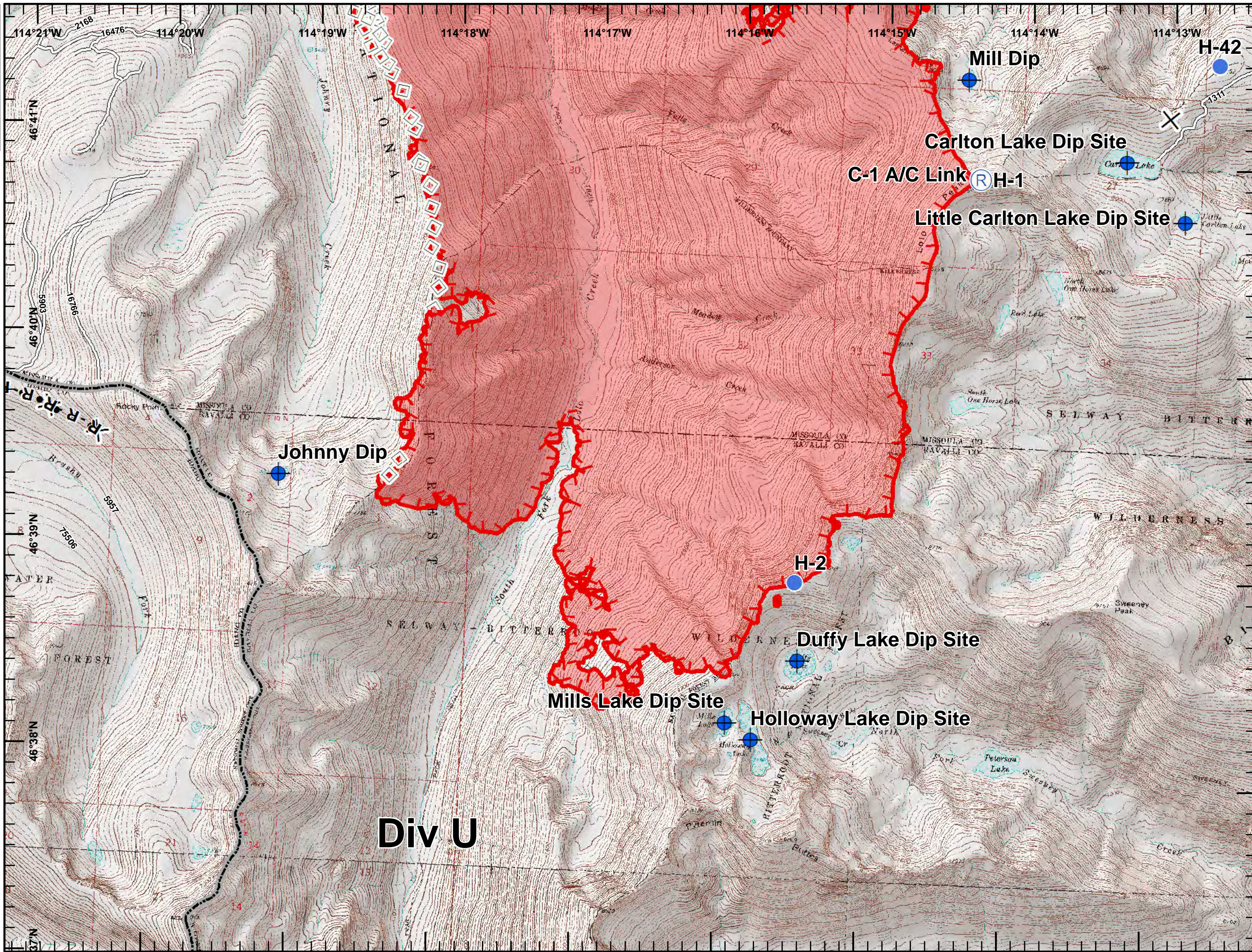
MT-LNF-001288

IAP Map, Page 7

8/9/2017



7,453 acres, IR Perimeter as of 8/7/2017 @ 2357



- ◆ Dip Site
- Helispot
- Ⓜ Repeater

R - R Road as Completed Line

✕ • Proposed Dozer Line

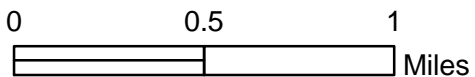
Aerial Retardant Drop

▬ Uncontrolled Fire Edge

▬ Roads

▭ State Boundary

▭ Wildfire Daily Fire Perimeter



Div U