
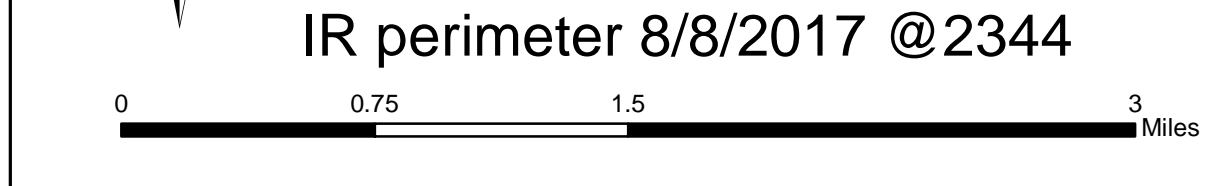
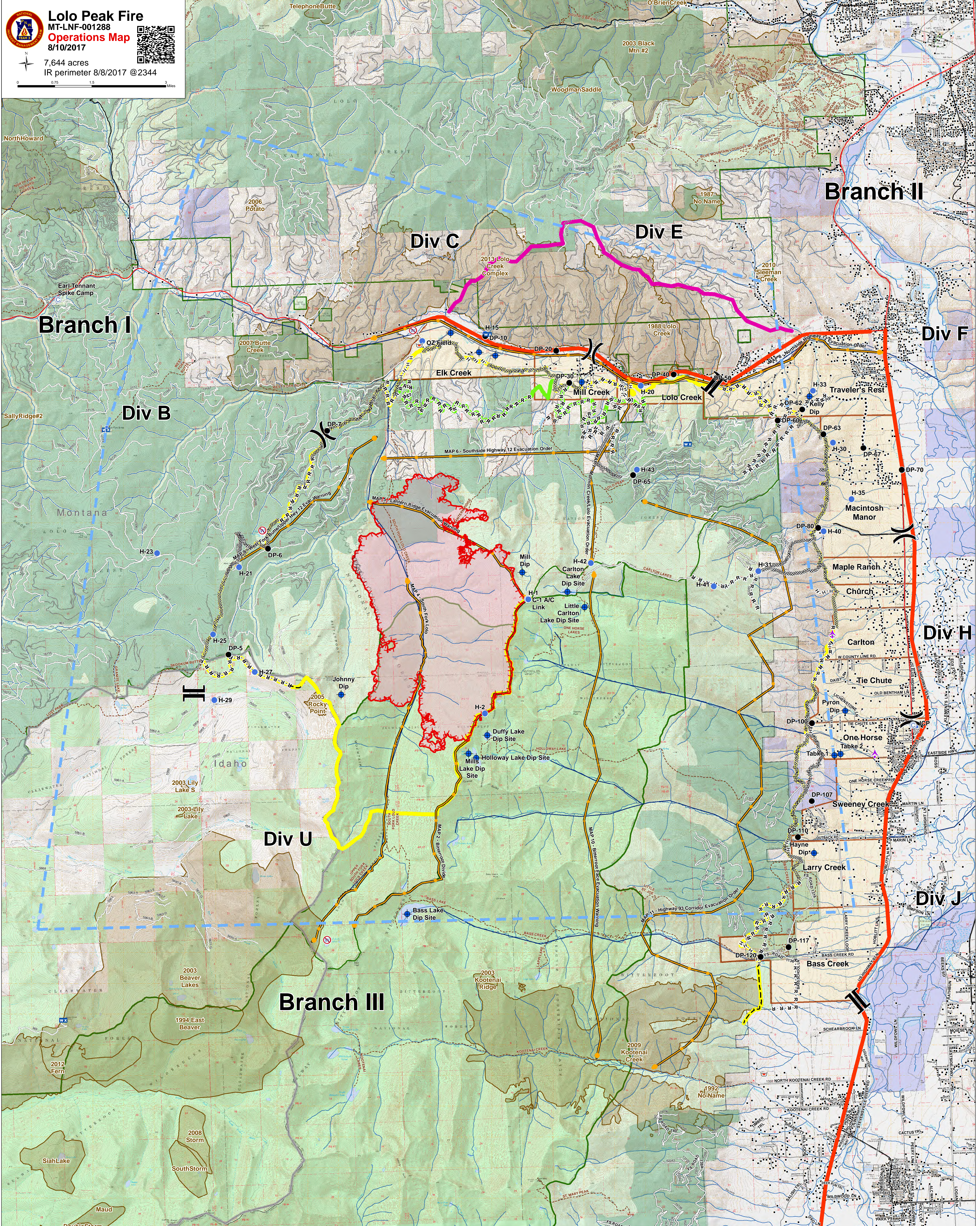


Lolo Peak Fire
 MT-LNF-001288
Operations Map
 8/10/2017

7,644 acres
 IR perimeter 8/8/2017 @2344

Aerial Hazard	Camp	Dip Site	Helispot	Retardant/Mud Pit	Restricted Water Source	Division Break	Branch Break	Structures	Completed Dozer Line	Completed Hand Line	R-R-R Road as Completed Line	Planned Secondary Line	Aerial Retardant Drop	Management Action Points	Uncontrolled Fire Edge	Evacuation Zones	Wildfire Daily Fire Perimeter	Primary Line	Alternate Line	Contingency Line	Emergency Line	Trails	Streams	Values at Risk Bull Trout Streams	Values at Risk Timber	Timber Inv Mgmt	Wilderness	Fire History 1980 - Present	State Boundary	Forest Boundary