



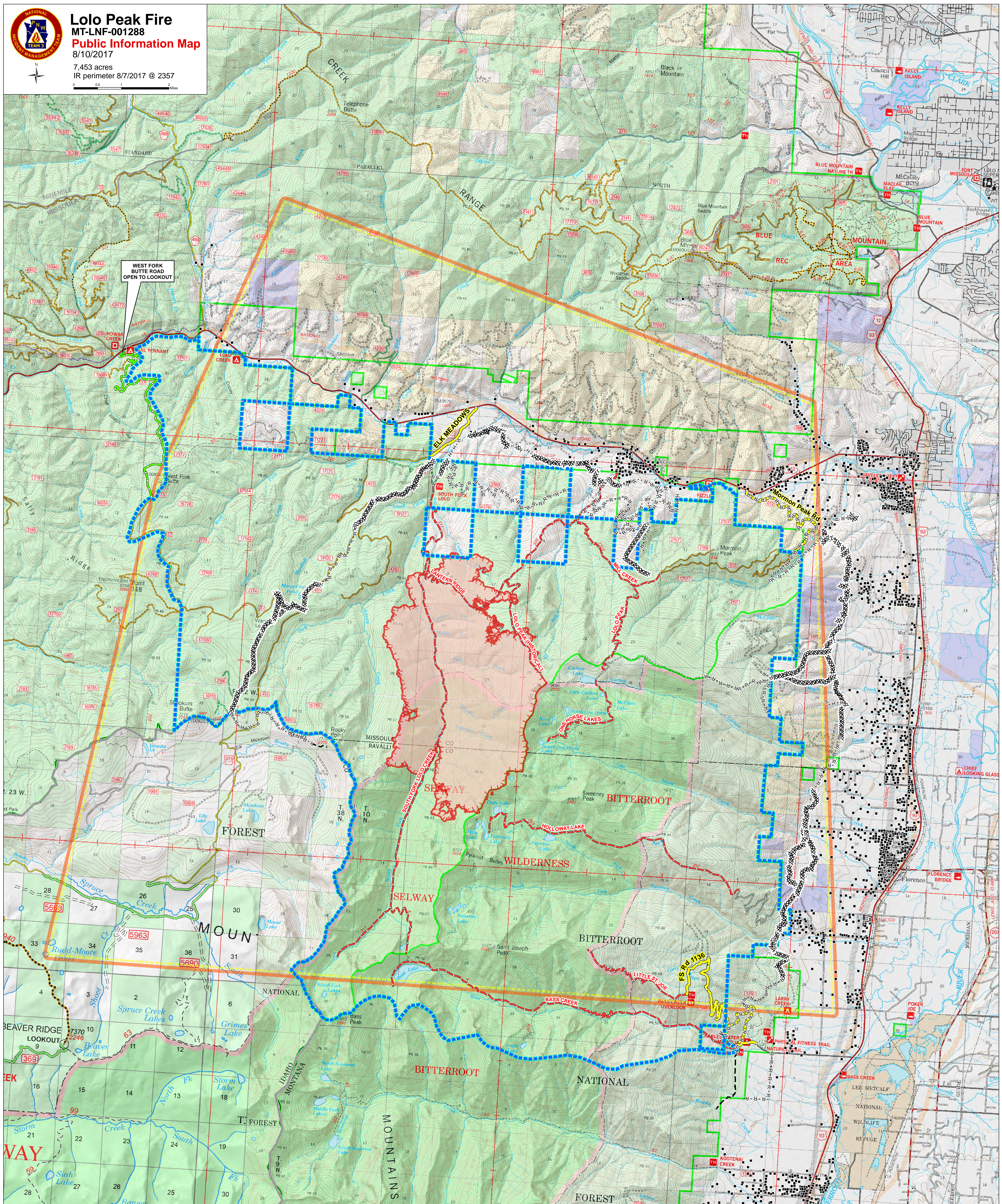
# Lolo Peak Fire MT-LNF-001288 Public Information Map

8/10/2017  
7,453 acres  
IR perimeter 8/7/2017 @ 2357



0 0.5 1 2 Miles

WEST FORK BUTTE ROAD OPEN TO LOOKOUT



- Structures
- West Fork Butte Rd - Open to Lookout
- Road Closure
- Trail Closures
- XXXXXXXXX Completed Dozer Line
- Completed Hand Line
- R-R-R-R Road as Completed Line
- Planned Fire Line
- ▭ Closure Area
- ▭ State Boundary
- ▭ Temporary Flight Restriction - Includes Unmanned Aerial Vehicles (Drones)
- ▭ Fire Perimeter
- ▭ Uncontrolled Fire Edge

