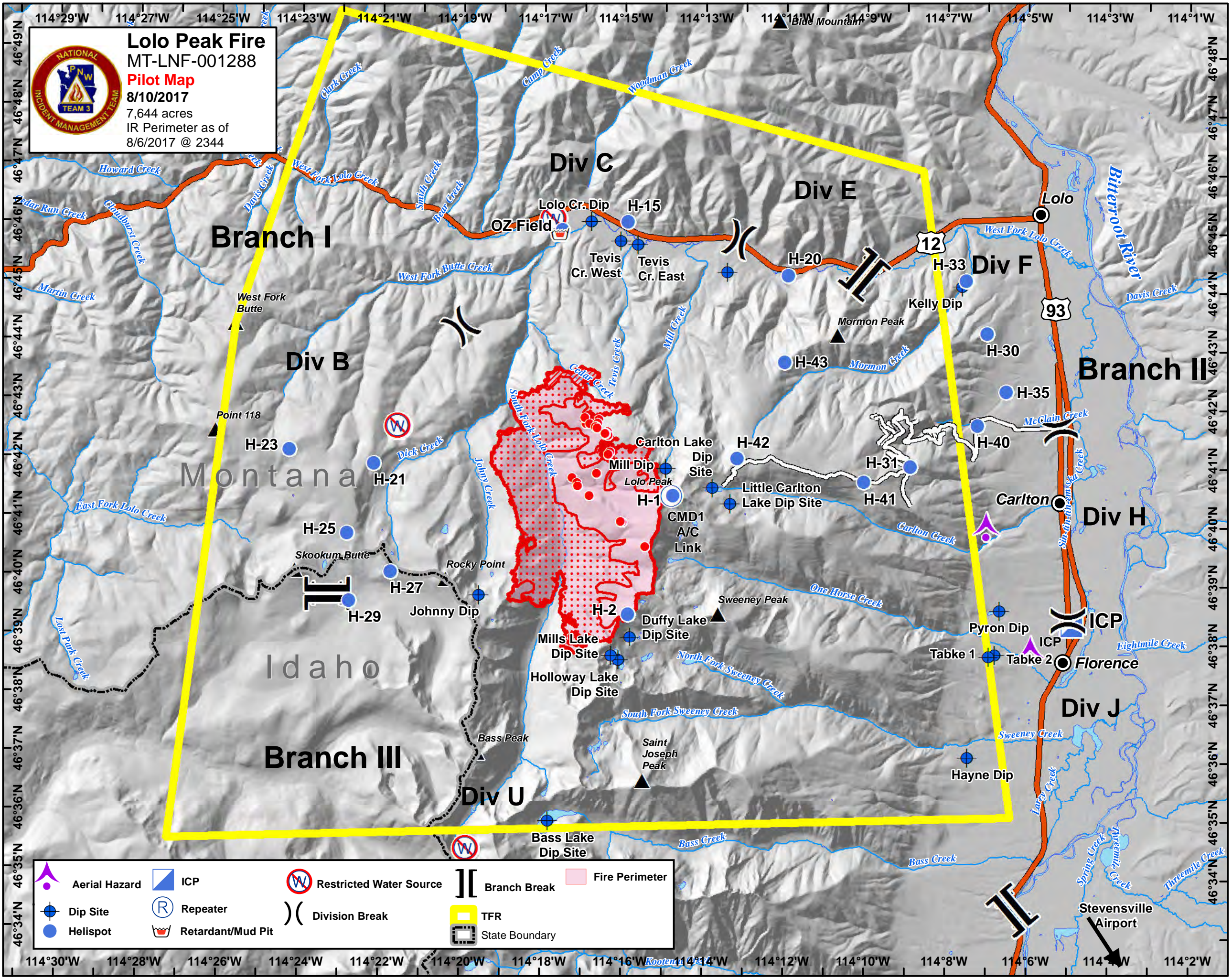
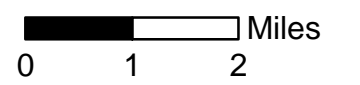


**Lolo Peak Fire**  
 MT-LNF-001288  
**Pilot Map**  
 8/10/2017  
 7,644 acres  
 IR Perimeter as of  
 8/6/2017 @ 2344

Frequencies	Type	Freq.
TFR/Fixed-Wing AA	AM	128.6500
Rotorwing	AM	123.6000
A/G Primary	FM TX/RX	168.6375
A/G Secondary	FM TX/RX	164.9500
TOLC Deck	FM RX/TX	163.1000
Tan A/G Life Flight	FM RX/TX	155.3400N
White A/G Hospitals use when talking direct to Hospital		155.280N
Air Guard	FM RX/TX	168.6250
		110.9 TT/RT



Label	Latitude	Longitude
ICP	46° 38.456'	-114° 4.552'
H-1	46° 40.910'	-114° 14.301'
H-2	46° 38.930'	-114° 15.513'
H-15	46° 45.599'	-114° 15.166'
H-20	46° 44.594'	-114° 11.236'
H-21	46° 41.648'	-114° 21.662'
H-23	46° 41.942'	-114° 23.743'
H-25	46° 46.48'	-114° 22.38'
H-27	46° 39.796'	-114° 21.349'
H-29	46° 39.329'	-114° 22.406'
H-30	46° 43.470'	-114° 6.378'
H-31	46° 43.125'	-114° 11.425'
H-33	46° 44.393'	-114° 6.840'
H-35	46° 42.464'	-114° 5.956'
H-40	46° 41.918'	-114° 6.700'
H-41	46° 41.022'	-114° 9.556'
H-42	46° 41.507'	-114° 12.675'
H-43	46° 43.128'	-114° 11.407'
Bass Lake Dip Site	46° 35.454'	-114° 17.673'
Carlton Lake Dip Site	46° 41.020'	-114° 13.301'
Duffy Lake Dip Site	46° 38.548'	-114° 15.475'
Hayne Dip	46° 36.273'	-114° 7.248'
Holloway Lake Dip Site	46° 38.157'	-114° 15.777'
Johnny Dip	46° 39.349'	-114° 19.166'
Little Carlton Lake Dip Site	46° 40.739'	-114° 12.875'
Mill Dip	46° 41.389'	-114° 14.433'
Mills Lake Dip Site	46° 38.235'	-114° 15.966'
Suzanne Pylon	46° 38.745'	-114° 6.327'
Tabke 1	46° 37.975'	-114° 6.639'
Tabke 2	46° 37.996'	-114° 6.481'
C-1 A/C Link	46° 40.910'	-114° 14.318'
OZ Field	46° 45.511'	-114° 16.783'
Tevis Cr. West	46° 45.281'	-114° 15.344'
Tevis Cr. East	46° 45.213'	-114° 14.928'
Lolo Cr. Dip	46° 45.636'	-114° 16.051'
Stevensville Airport	46° 31.553'	-114° 3.110'

Aerial Hazard	ICP	Restricted Water Source	Branch Break	Fire Perimeter
Dip Site	Repeater	Division Break	TFR	State Boundary
Helispot	Retardant/Mud Pit			