



Lolo Peak Fire

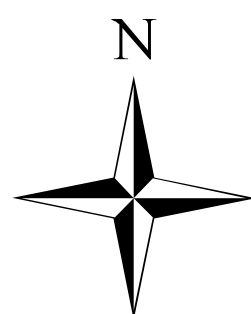
MT-LNF-001288

Briefing Map

8/10/2017

7,644 acres

IR perimeter 8/8/2017 @ 2344



0 1 2 4 Miles

Branch I

Branch II

Div C

Div E

Div F

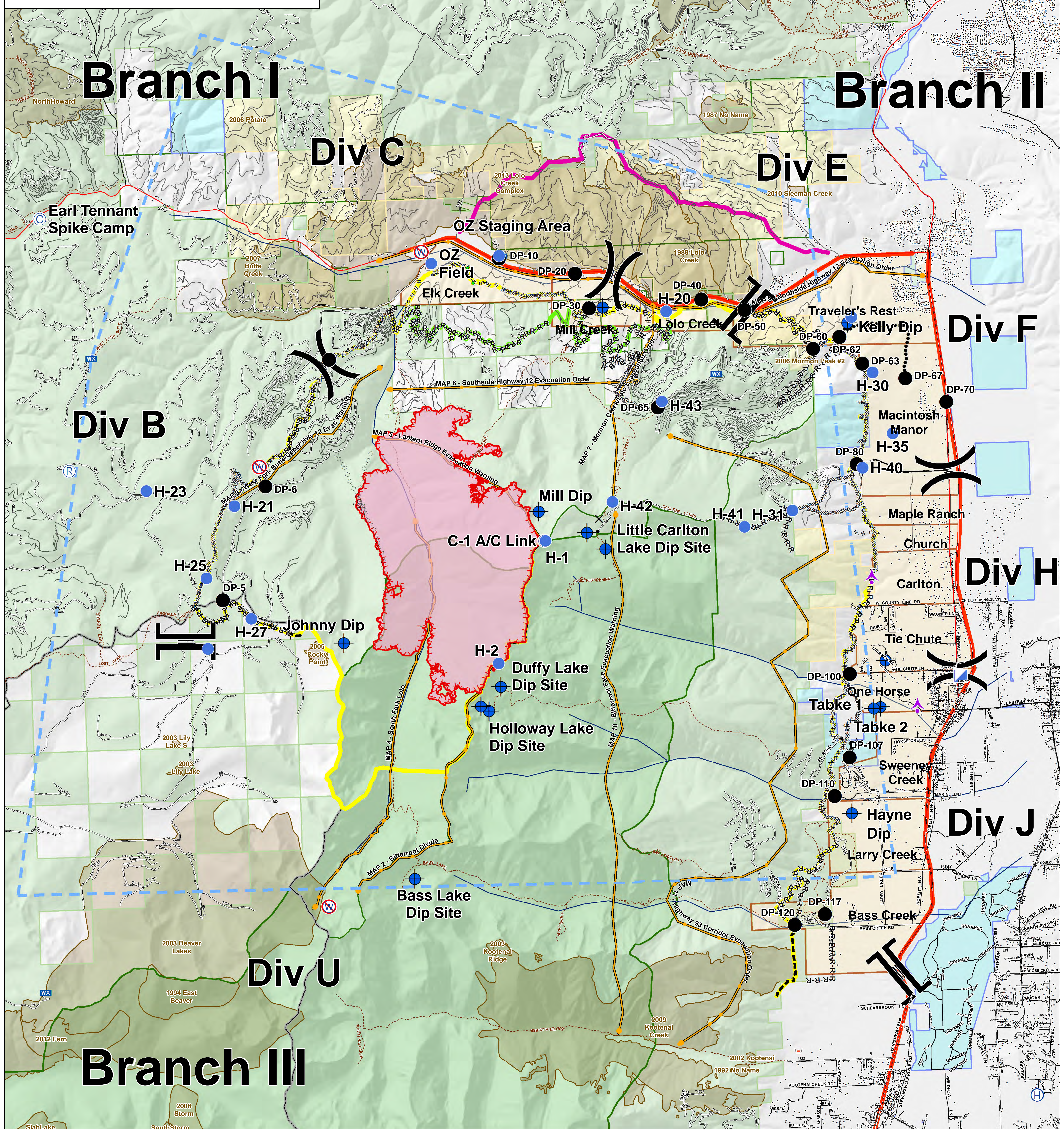
Div B

Div H

Div J

Div U

Branch III



- | | | | | | | |
|---------------------------|-------------------------------------|-----------------------|----------------------------|----------------------------|-------------------------|-------------------------------|
| ● Drop Point | ■ ICP |)) Division Break | --- Planned Fire Line | — Primary Line | ▭ States | ■ Weyerhaeuser |
| ● Helispot | ☒ Lookout | Branch Break | --- Planned Secondary Line | — Alternate Line | ▭ Wilderness | ■ Clearwater National Forest |
| ● Dip Site | ☒ Mobile Weather Unit | Aerial Retardant Drop | --- Uncontrolled Fire Edge | — Contingency Line | ▭ Weyerhaeuser | ▭ Fire History 1980 - Present |
| ● Aerial Hazard | ☒ Repeater | TFR | --- Completed Dozer Line | — Emergency Line | ▭ Administrative Forest | ▭ Wilderness |
| ● Camp | ☒ Retardant/Mud Pit | Trails | --- Completed Hand Line | — Management Action Points | ▭ Other Federal | ▭ State |
| ● Restricted Water Source | ☒ Road as Completed Line | Trails | --- Completed Plow Line | — Highway | ▭ Evacuation Zones | ▭ US Forest Service |
| ● Helibase | ☒ Values At Risk Bull Trout Streams | Structures | --- Proposed Dozer Line | — Local Roads | ▭ | ▭ |

