



Lolo Peak Fire
 MT-LNF-001288
IAP Map, Page 1
Div B
 8/10/2017



7,644 acres, IR Perimeter
 as of 8/8/2017 @ 2344

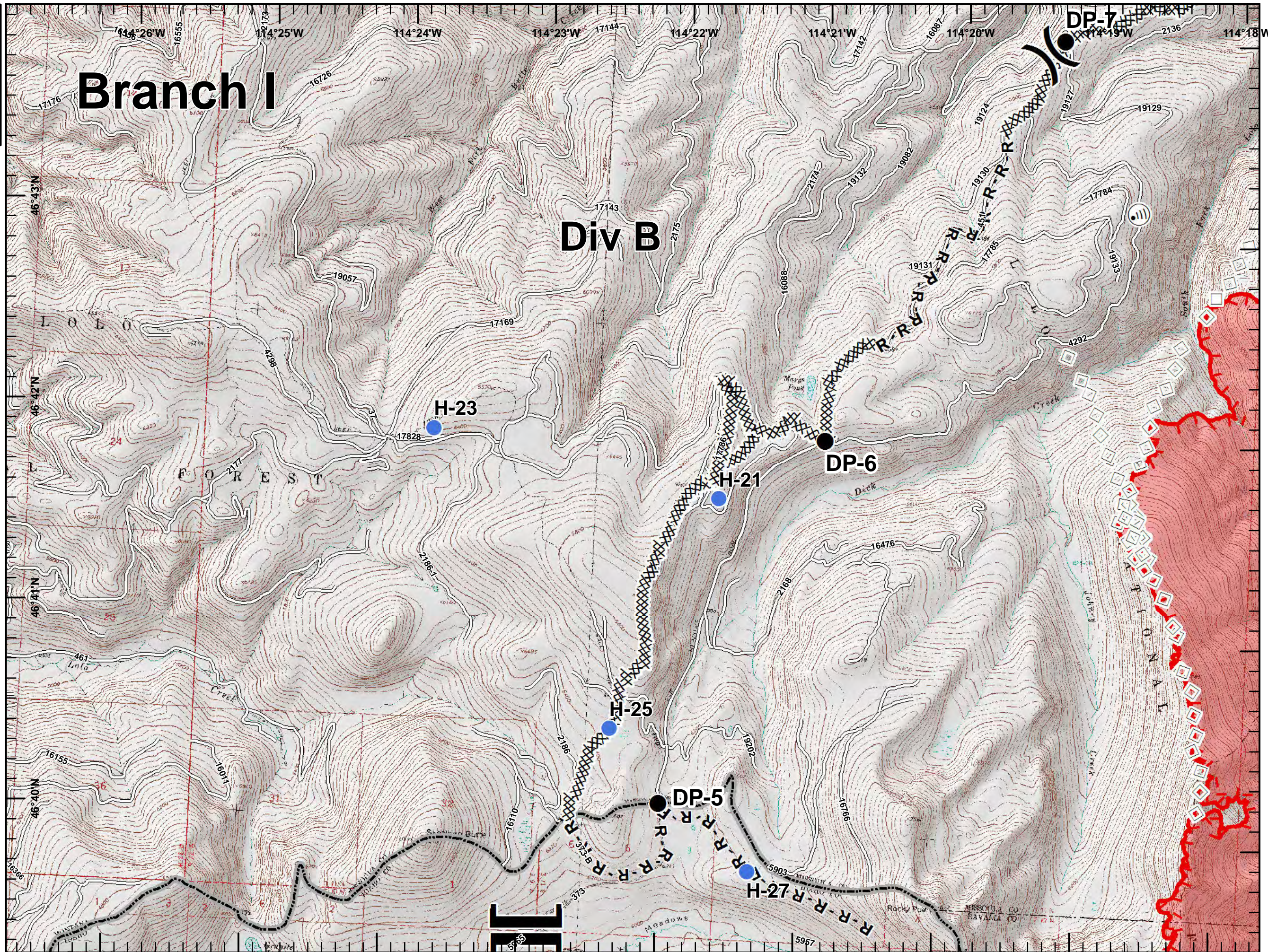
Branch I

Div B

- Drop Point
- Helispot
- ⊙ Internet Access
-) Division Break
- ┌ Branch Break
- XXXXX Completed Dozer Line
- R - R Road as Completed Line
- Aerial Retardant Drop
- ┌ Uncontrolled Fire Edge
- Roads
- ▭ State Boundary
- ▭ Wildfire Daily Fire Perimeter



0 0.5 1
 Miles





Lolo Peak Fire
 MT-LNF-001288
 IAP Map, Page 2
 Div C
 8/10/2017
 7,644 acres, IR Perimeter
 as of 8/8/2017 @ 2344



Branch I

OZ Staging Area

Div C

OZ Field

H-15

DP-10

DP-20

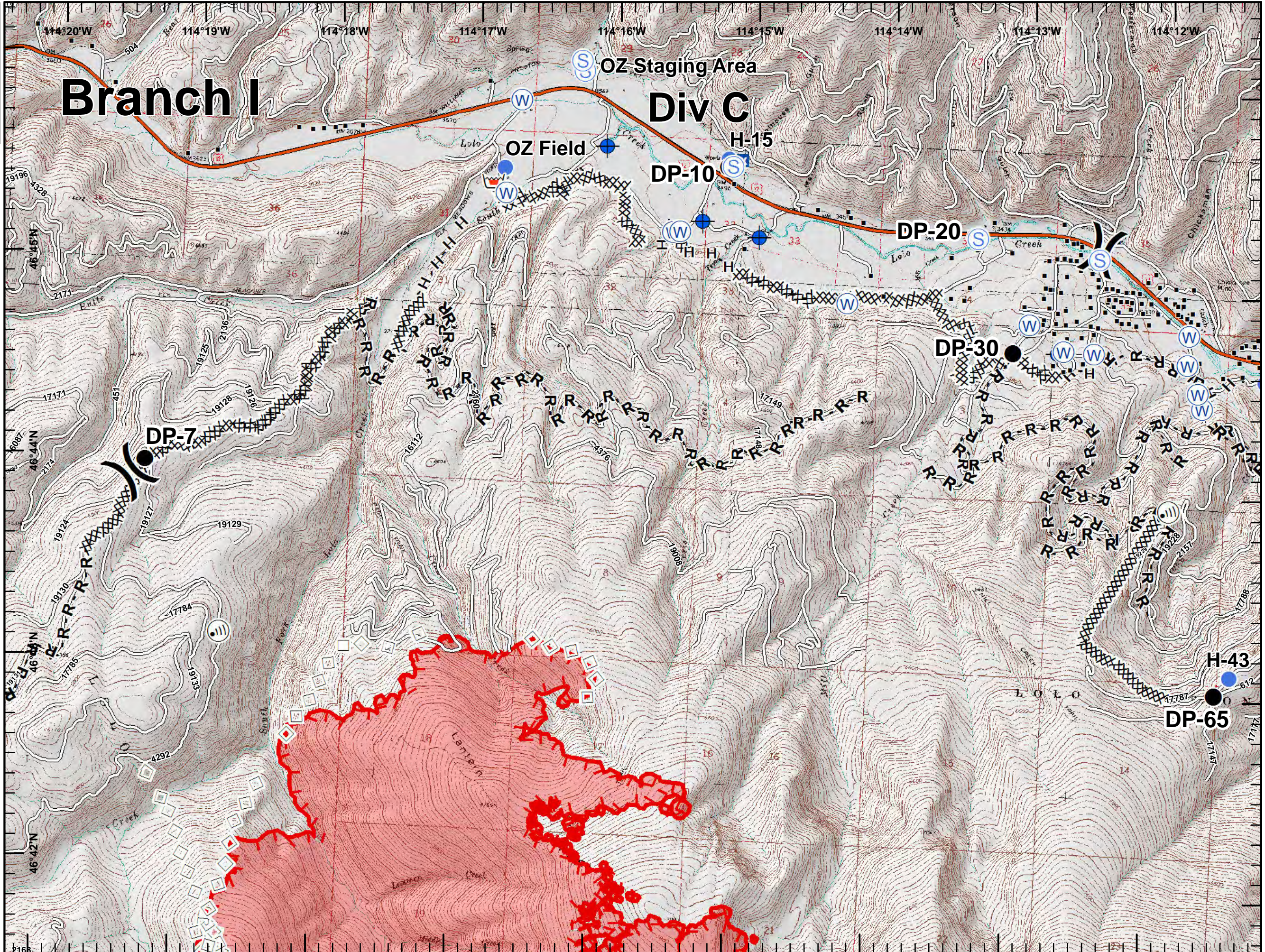
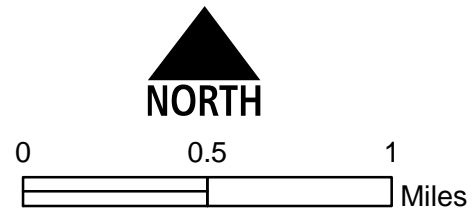
DP-7

DP-30

H-43

DP-65

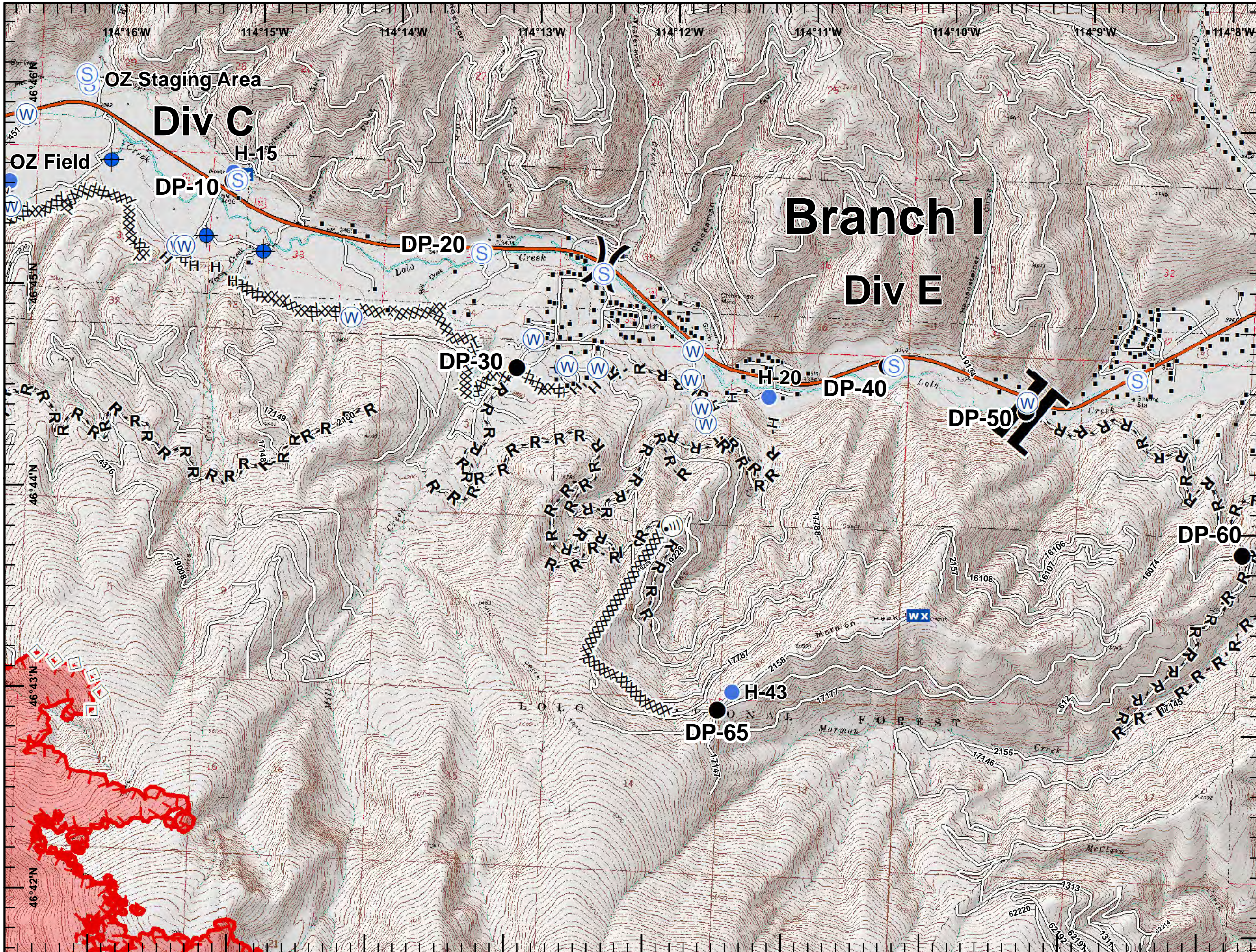
- Dip Site
- Drop Point
- Helispot
- Internet Access
- Mobile Weather Unit
- Retardant/Mud Pit
- Staging Area
- Water Source
- Division Break
- Structures
- Completed Dozer Line
- Completed Hand Line
- Road as Completed Line
- Aerial Retardant Drop
- Uncontrolled Fire Edge
- Interstate and Highways
- Roads
- State Boundary
- Wildfire Daily Fire Perimeter





Lolo Peak Fire
 MT-LNF-001288
 IAP Map, Page 3
 Div E
 8/10/2017

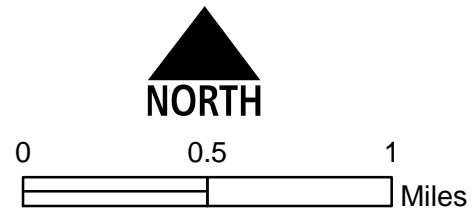
7,644 acres, IR Perimeter
 as of 8/8/2017 @ 2344



- Dip Site
- Drop Point
- Helispot
- Internet Access
- Mobile Weather Unit
- Retardant/Mud Pit
- Staging Area
- Water Source
- Division Break
- Branch Break
- Structures

XXXXXX Completed Dozer Line
 H - H Completed Hand Line
 R - R Road as Completed Line

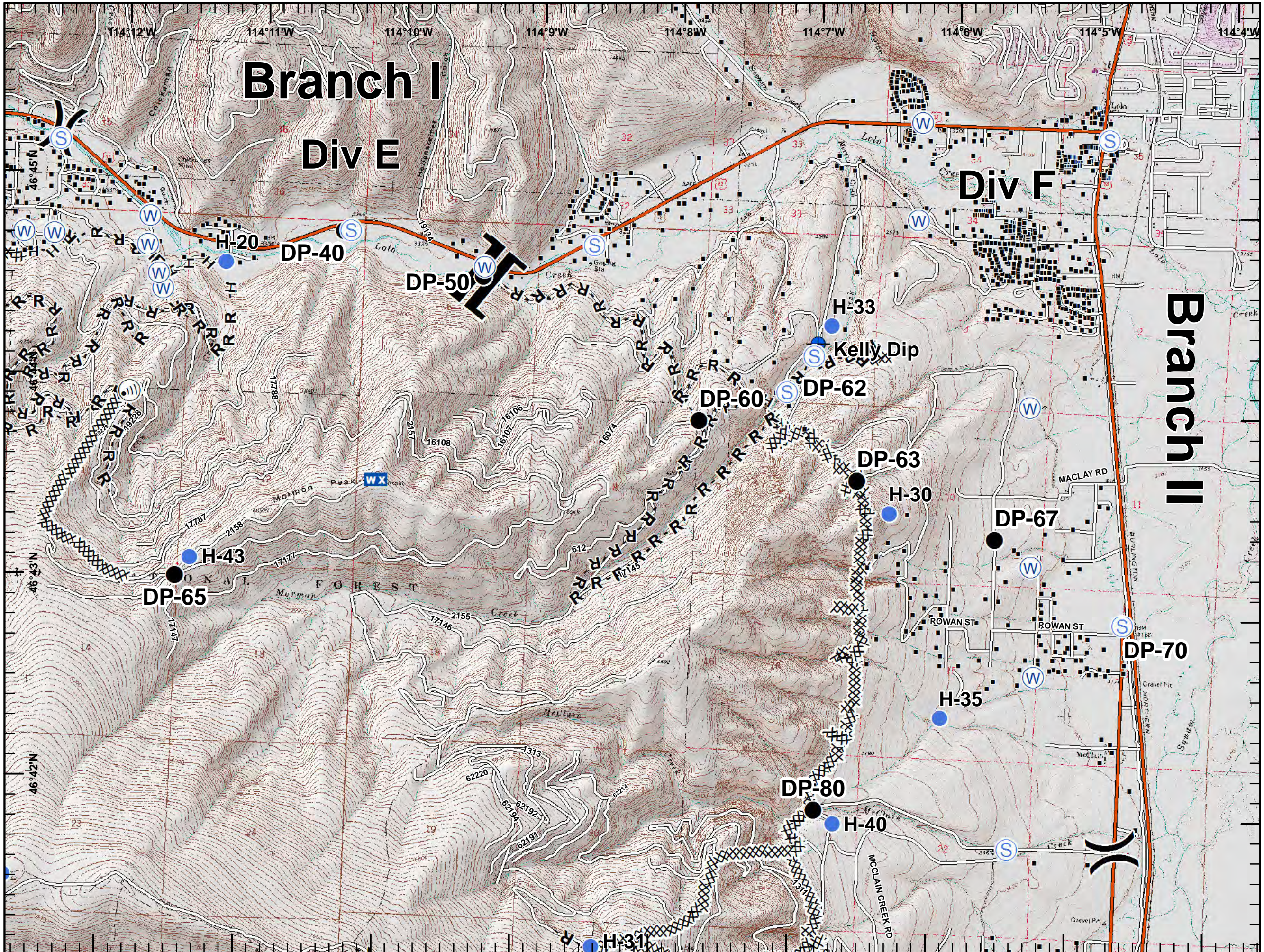
- Aerial Retardant Drop
- Uncontrolled Fire Edge
- Interstate and Highways
- Roads
- State Boundary
- Wildfire Daily Fire Perimeter





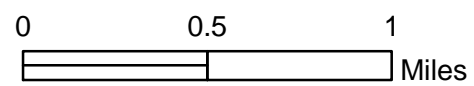
Lolo Peak Fire
 MT-LNF-001288
 IAP Map, Page 4
 Div F
 8/10/2017

7,644 acres, IR Perimeter
 as of 8/8/2017 @ 2344



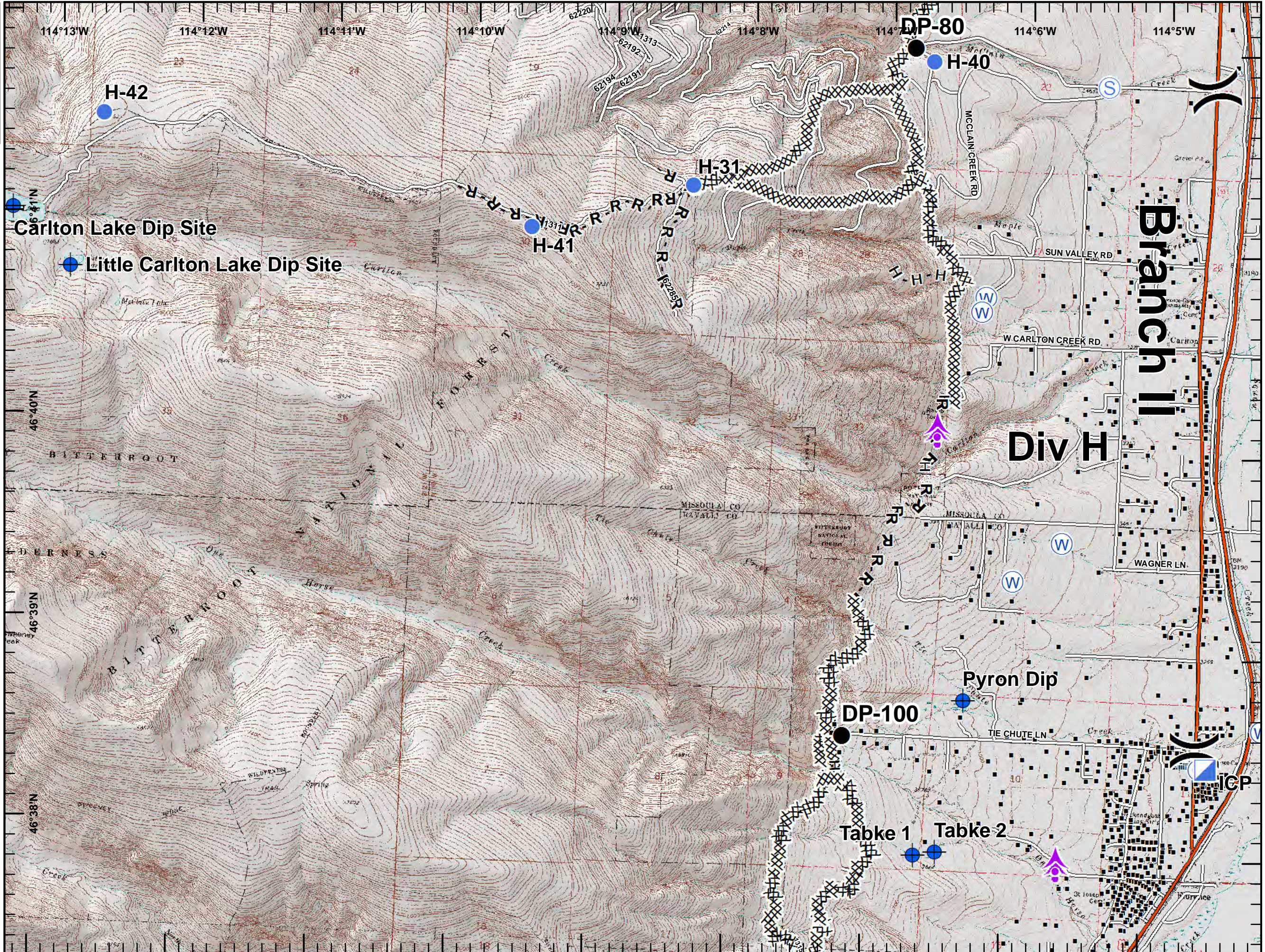
- Dip Site
- Drop Point
- Helispot
- Internet Access
- Mobile Weather Unit
- Staging Area
- Water Source
- Division Break
- Branch Break
- Structures

- Completed Dozer Line
- H - H Completed Hand Line
- R - R Road as Completed Line
- Interstate and Highways
- Roads
- State Boundary

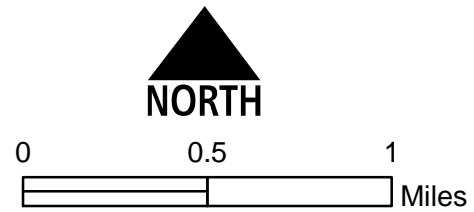




Lolo Peak Fire
 MT-LNF-001288
IAP Map, Page 5
Div H
 8/10/2017
 7,644 acres, IR Perimeter
 as of 8/8/2017 @ 2344

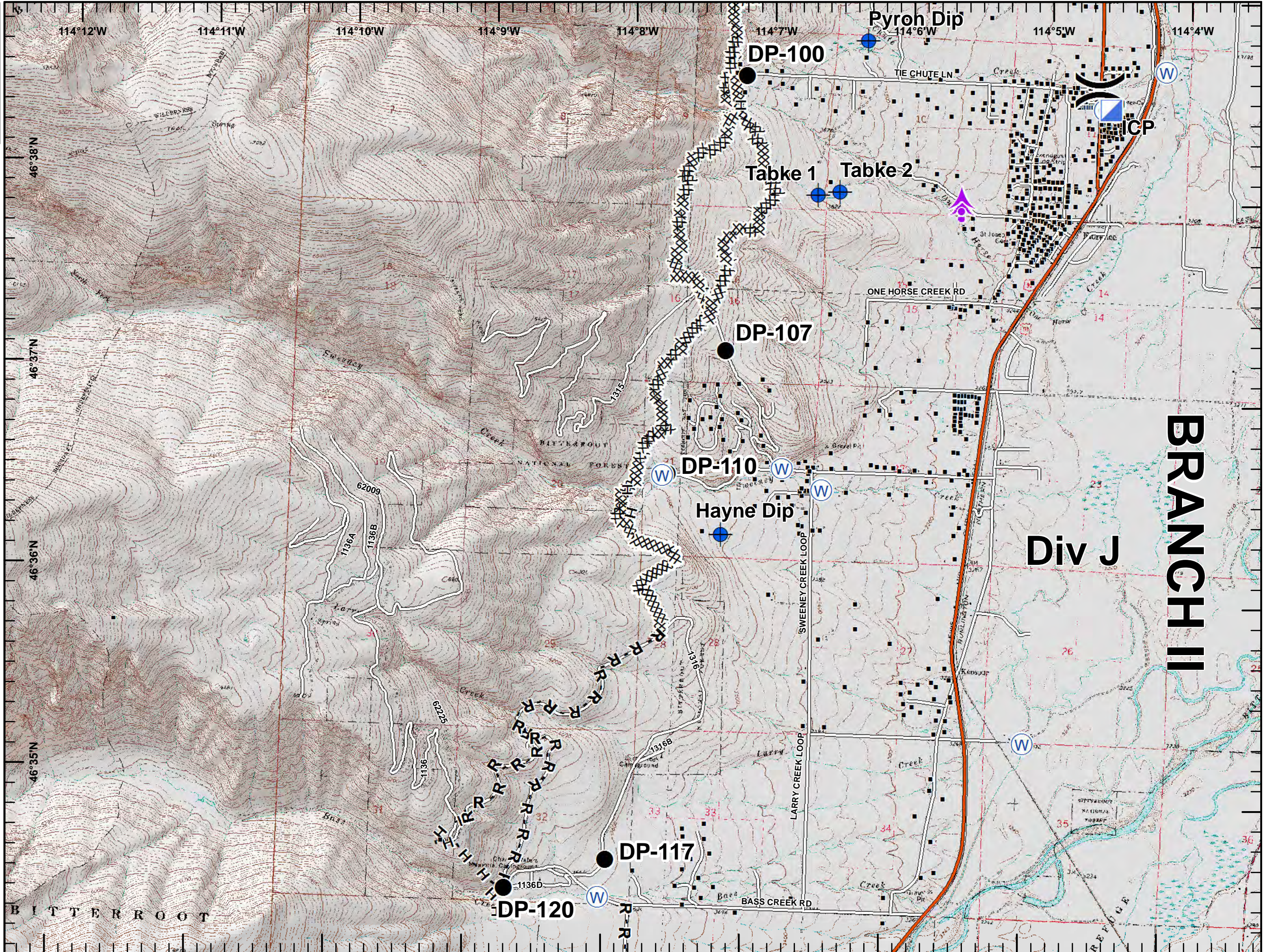


- Completed Dozer Line
- Completed Hand Line
- Road as Completed Line
- Interstate and Highways
- Roads
- State Boundary



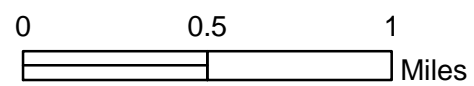


Lolo Peak Fire
 MT-LNF-001288
 IAP Map, Page 6
 Div J
 8/10/2017
 7,644 acres, IR Perimeter
 as of 8/8/2017 @ 2344



- Aerial Hazard
- Camp
- Dip Site
- Drop Point
- ICP
- Water Source
- Division Break
- Structures

- Completed Dozer Line
- Completed Hand Line
- Road as Completed Line
- Interstate and Highways
- Roads
- State Boundary



BRANCH II

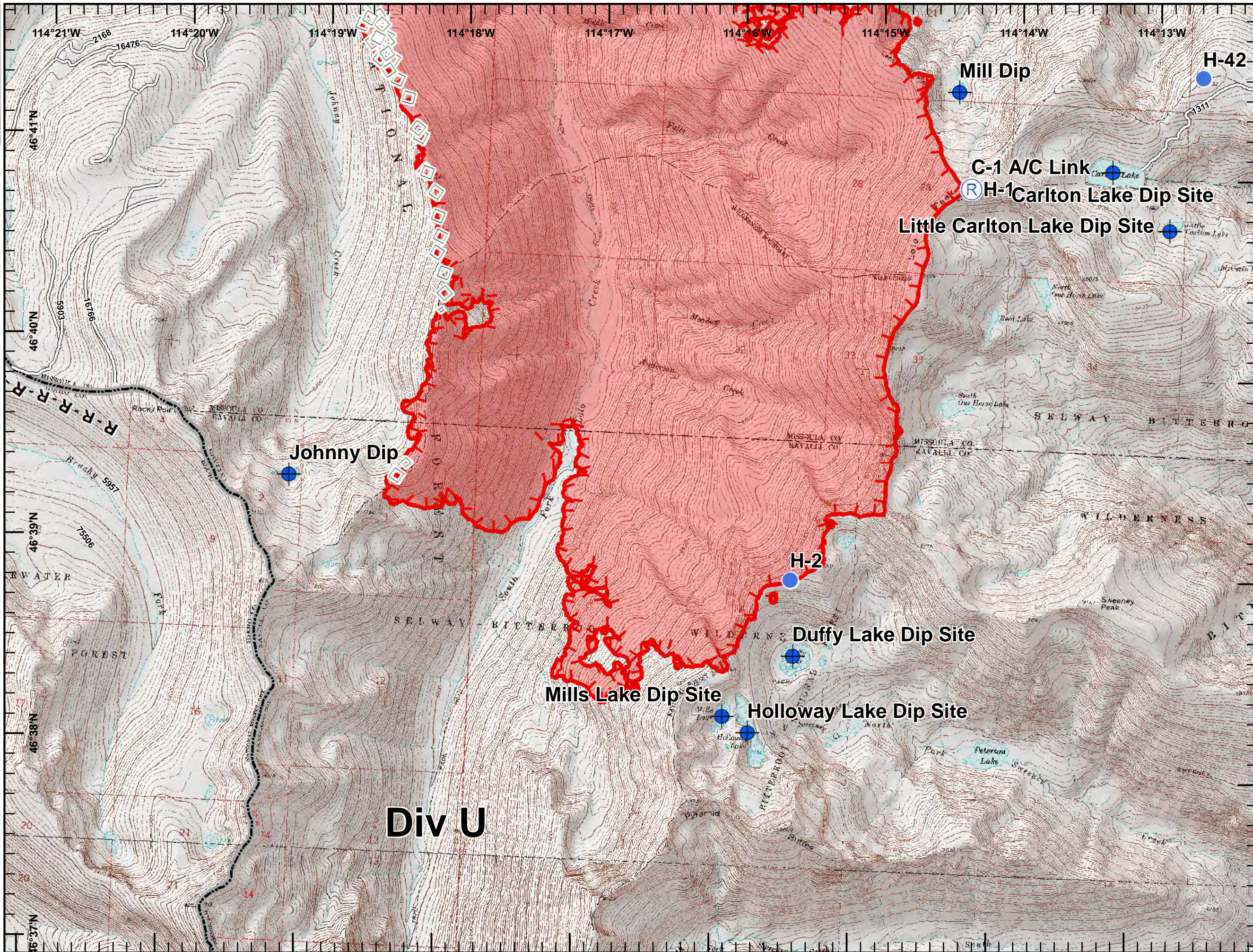
Div J

BITTERROOT



Lolo Peak Fire
 MT-LNF-001288
 IAP Map, Page 7
 Div U
 8/10/2017

7,644 acres, IR Perimeter
 as of 8/8/2017 @ 2344



- Dip Site
- Helispot
- Repeater

R - R Road as Completed Line

- Aerial Retardant Drop
- Uncontrolled Fire Edge
- Roads
- State Boundary
- Wildfire Daily Fire Perimeter

