
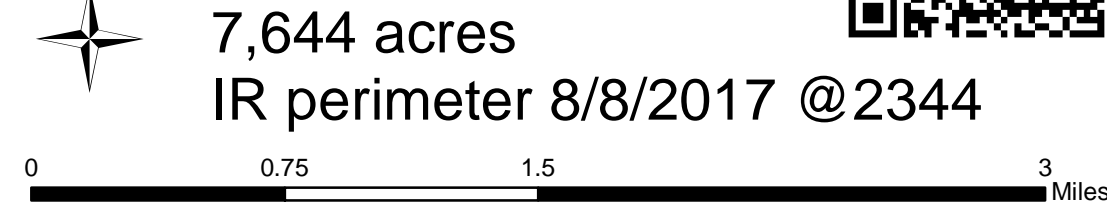
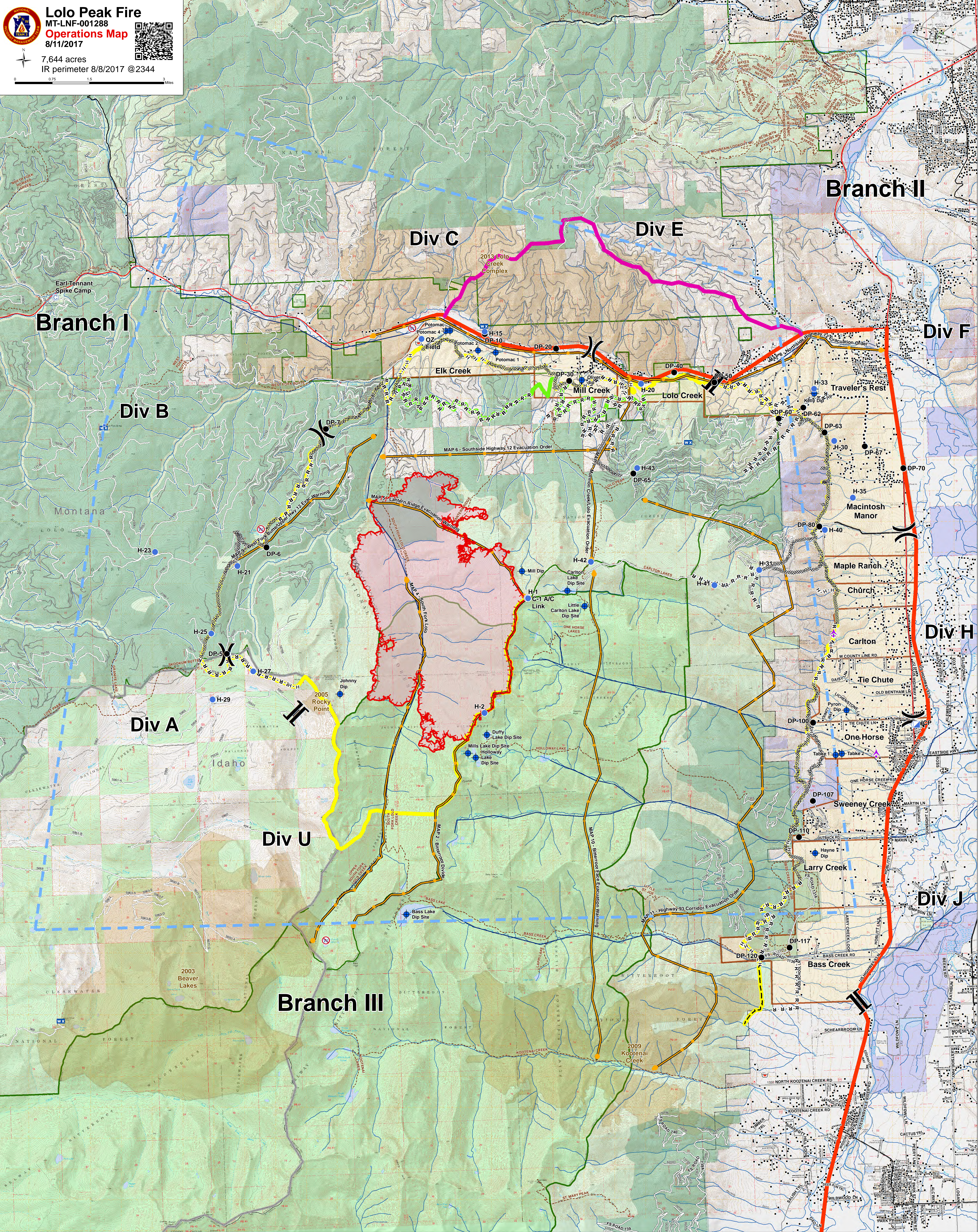


Lolo Peak Fire
 MT-LNF-001288
Operations Map
 8/11/2017

7,644 acres
 IR perimeter 8/8/2017 @2344

| | | | | | | | | |
|---------------|---------------------|-------------------------|------------------------|------------------------|--------------------------|-----------------------|-----------------------------------|-----------------|
| Aerial Hazard | ICP | Retardant/Mud Pit | Completed Dozer Line | Planned Fire Line | Management Action Points | Primary Line | Trails | Wilderness |
| Camp | Internet Access | Restricted Water Source | Completed Hand Line | Planned Secondary Line | Uncontrolled Fire Edge | Alternate Line | Streams | State Boundary |
| Dip Site | Lookout | Division Break | Road as Completed Line | Aerial Retardant Drop | Evacuation Zones | Contingency Line | Values at Risk Bull Trout Streams | Forest Boundary |
| Drop Point | Mobile Weather Unit | Branch Break | Structures | TFR | Emergency Line | Values at Risk Timber | Timber Inv Mgmt | |
| Helispot | Repeater | | | | | | | |