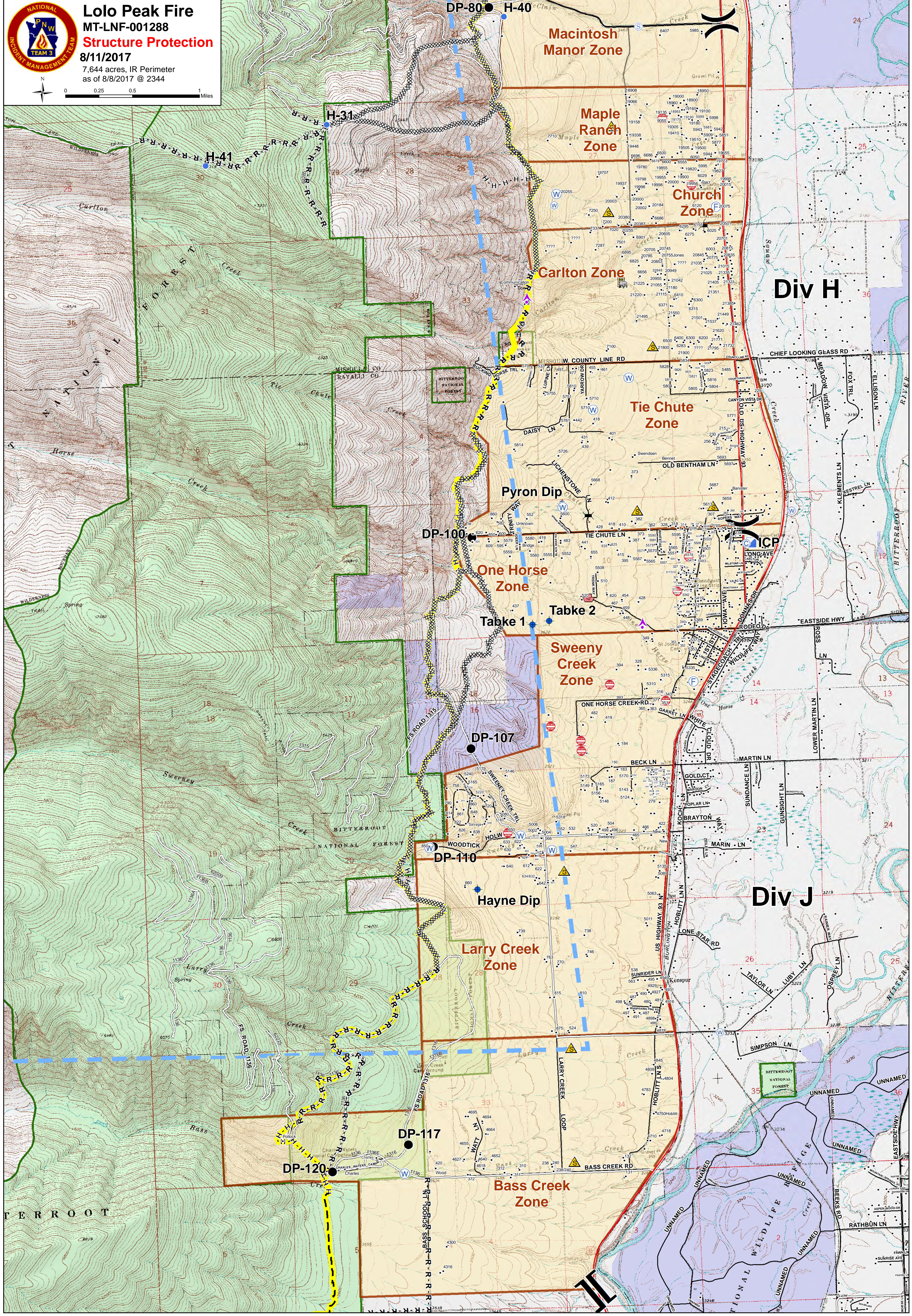
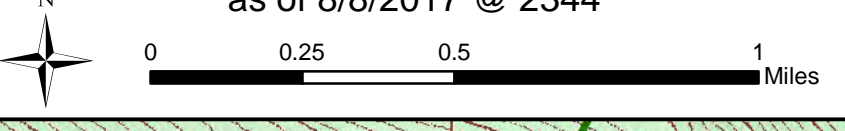




Lolo Peak Fire
 MT-LNF-001288
Structure Protection
 8/11/2017
 7,644 acres, IR Perimeter
 as of 8/8/2017 @ 2344



- | | | | | | | |
|-------------------------------|----------------------|------------------------|------------------|-------------------|--------------|----------------|
| Bridge | Safety Zone | Completed Dozer Line | TFR | US Forest Service | Drop Point | Water Source |
| Dangerous: Threatening People | Water Source | Completed Hand Line | Primary Line | Aerial Hazard | Hotspot | Division Break |
| FD Emergency Staging | Zoo | Road as Completed Line | Evacuation Zones | Camp | ICP | Branch Break |
| Junk Yard Hazards | Structure Assessment | Planned Fire Line | State | Dip Site | Staging Area | |