



Lolo Peak Fire

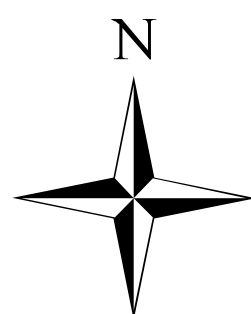
MT-LNF-001288

Briefing Map

8/11/2017

7,644 acres

IR perimeter 8/8/2017 @ 2344



0 1 2 4 Miles

Branch I

Branch II

Div C

Div E

Div F

Div B

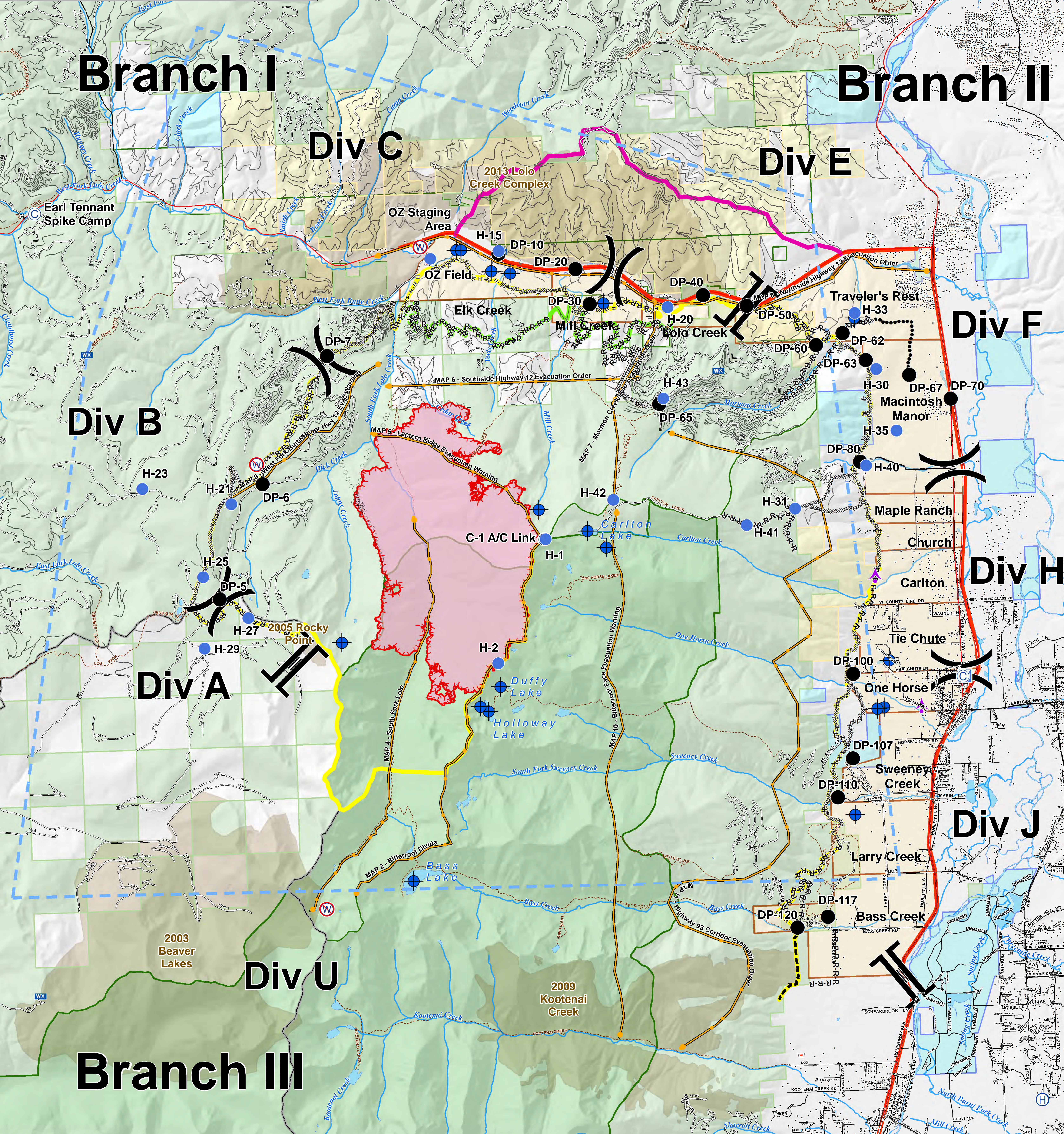
Div H

Div A

Div J

Div U

Branch III



- Drop Point
- ⊙ Camp
- Ⓡ Repeater
- ⌋ Branch Break
- Ⓜ Aerial Retardant Drop
- Ⓜ Primary Line
- Ⓜ Evacuation Zones
- Ⓜ Wilderness
- Helispot
- Ⓜ Helibase
- Ⓜ Retardant/Mud Pit
- Ⓜ Completed Dozer Line
- Ⓜ TFR
- Ⓜ Alternate Line
- Ⓜ Streams
- Ⓜ Other Federal
- Ⓜ Dip Site
- Ⓜ ICP
- Ⓜ Restricted Water Source
- Ⓜ Completed Hand Line
- Ⓜ Management Action Points
- Ⓜ Contingency Line
- Ⓜ Waterbodies
- Ⓜ State
- Ⓜ Aerial Hazard
- Ⓜ Lookout
- Ⓜ W
- Ⓜ R-R-R Road as Completed Line
- Ⓜ Uncontrolled Fire Edge
- Ⓜ Emergency Line
- Ⓜ States
- Ⓜ Wilderness
- Ⓜ US Forest Service
- Ⓜ Mobile Weather Unit
- Ⓜ Division Break
- Ⓜ Highway
- Ⓜ Trails
- Ⓜ Trails
- Ⓜ Weyerhaeuser
- Ⓜ Administrative Forest
- Ⓜ Planned Fire Line
- Ⓜ County
- Ⓜ Local Roads
- Ⓜ Structures
- Ⓜ Weyerhaeuser
- Ⓜ Administrative Forest
- Ⓜ Planned Secondary Line

