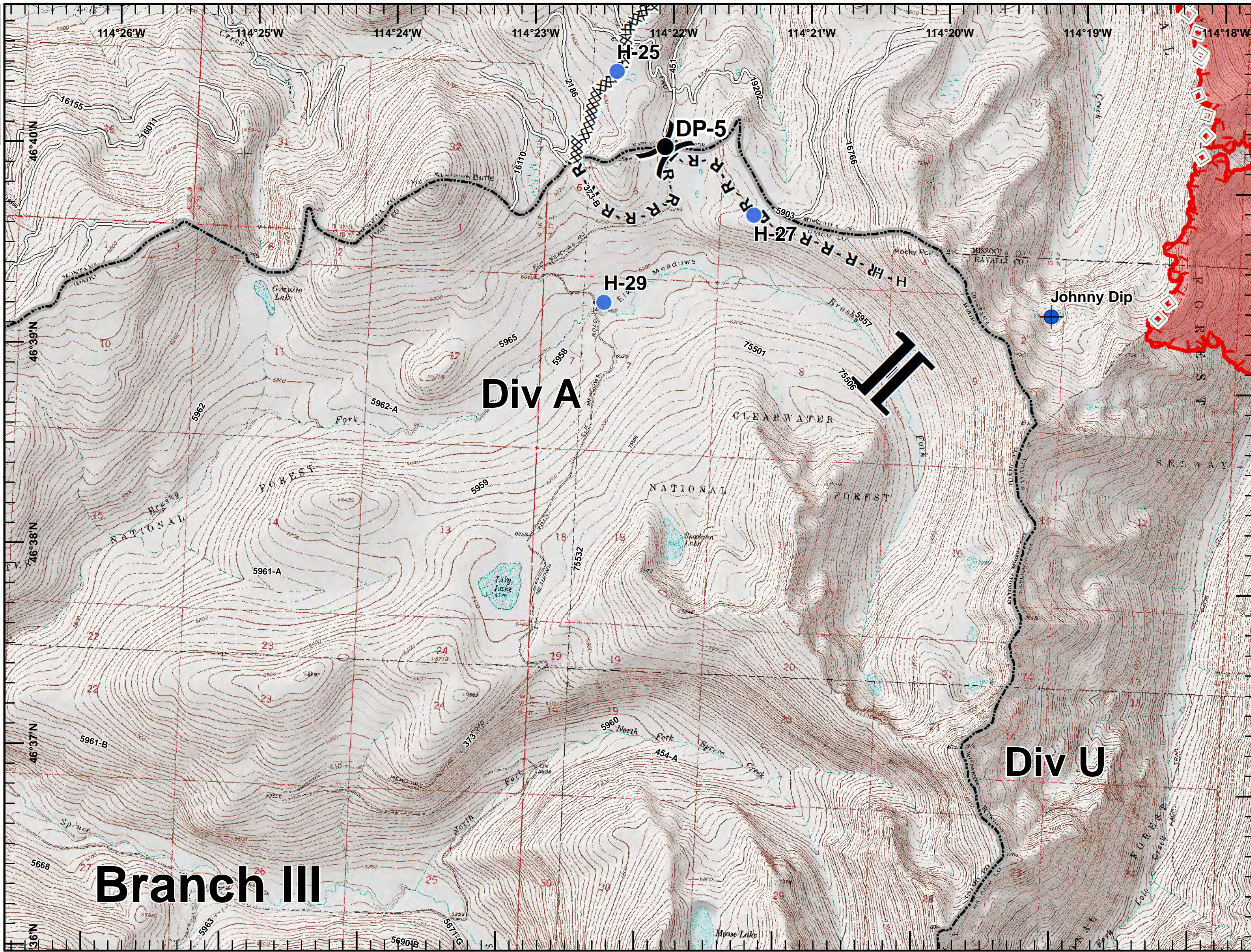


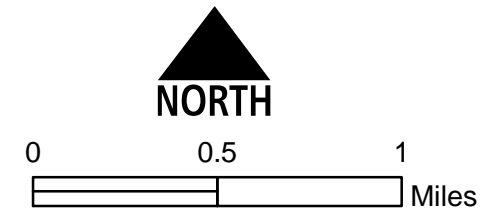


Lolo Peak Fire
 MT-LNF-001288
IAP Map, Page 1
 Div A
 8/11/2017

7,644 acres, IR Perimeter
 as of 8/8/2017 @ 2344



- Dip Site
- Drop Point
- Helispot
- Division Break
- Branch Break
- Completed Dozer Line
- H - H Completed Hand Line
- R - R Road as Completed Line
- Aerial Retardant Drop
- Uncontrolled Fire Edge
- Roads
- State Boundary
- Wildfire Daily Fire Perimeter





Lolo Peak Fire
 MT-LNF-001288
IAP Map, Page 2
Div B
 8/11/2017

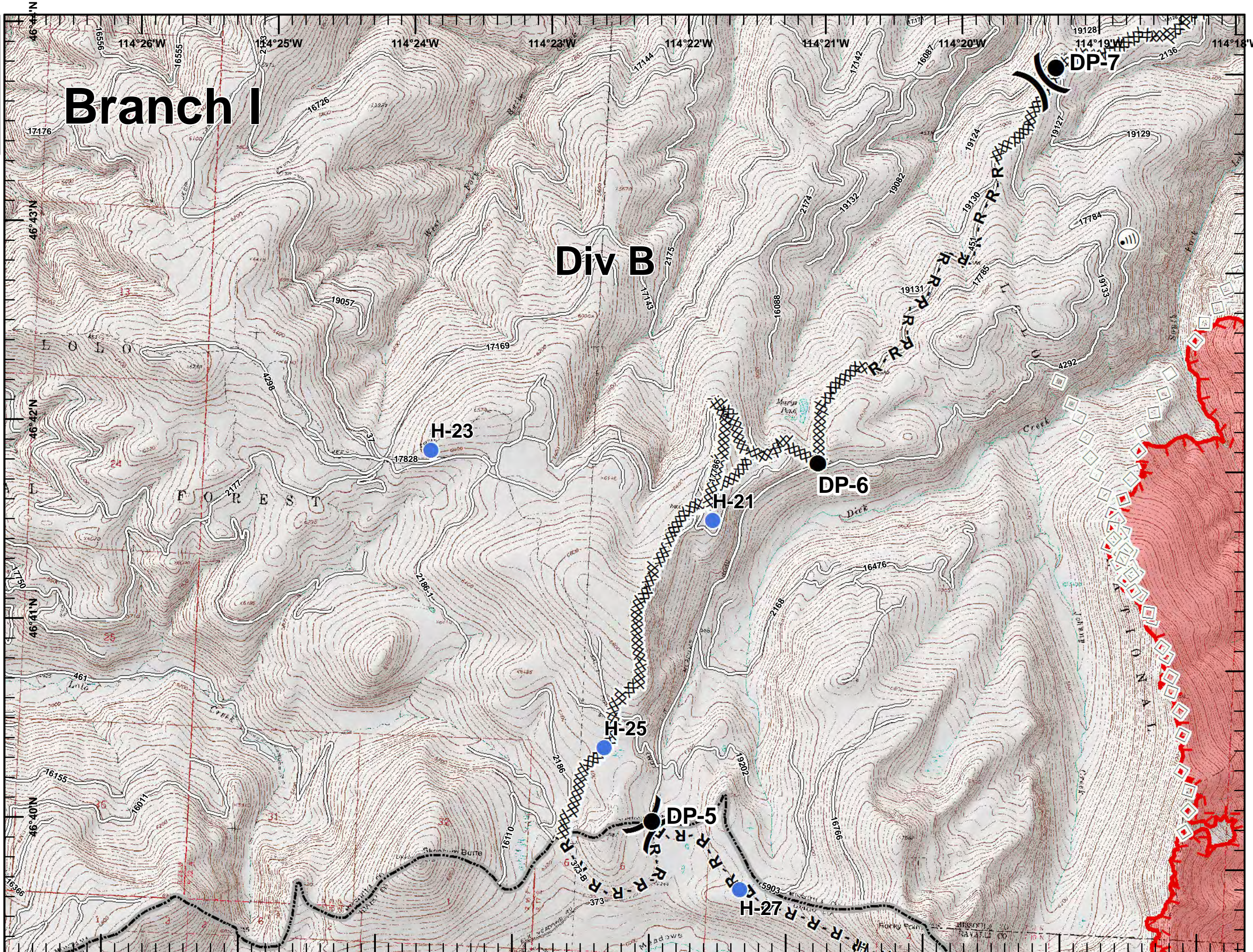
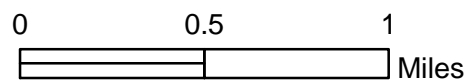
7,644 acres, IR Perimeter
 as of 8/8/2017 @ 2344



Branch I

Div B

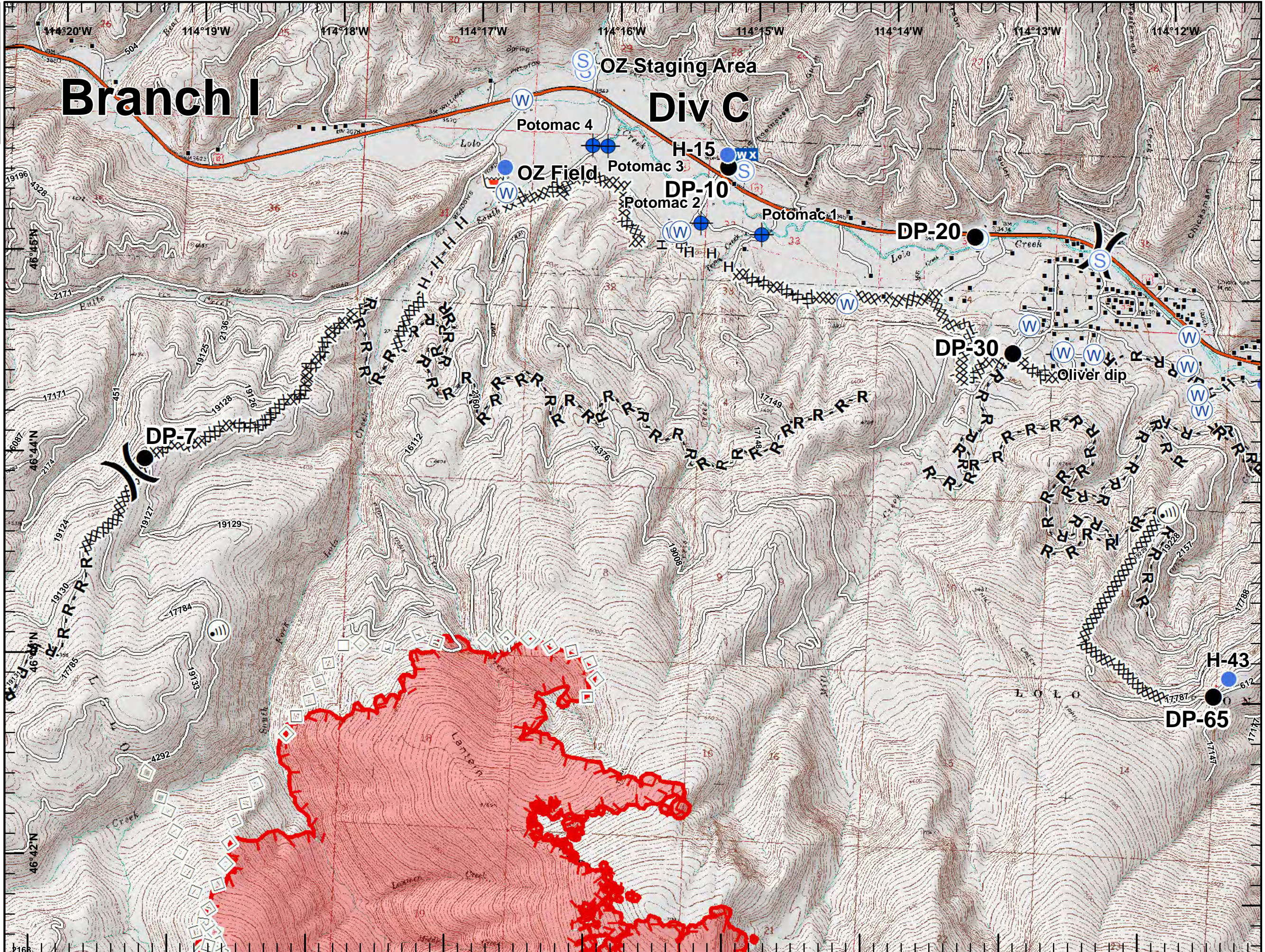
- Drop Point
- Helispot
- Ⓜ Internet Access
- └ Lookout
-) Division Break
- XXXXX Completed Dozer Line
- H - H Completed Hand Line
- R - R Road as Completed Line
- Aerial Retardant Drop
- └ Uncontrolled Fire Edge
- Roads
- ▭ State Boundary
- ▭ Wildfire Daily Fire Perimeter





Lolo Peak Fire
 MT-LNF-001288
 IAP Map, Page 3
 Div C
 8/11/2017

7,644 acres, IR Perimeter
 as of 8/8/2017 @ 2344



Branch I

OZ Staging Area

Div C

Potomac 4

H-15

OZ Field

DP-10

DP-20

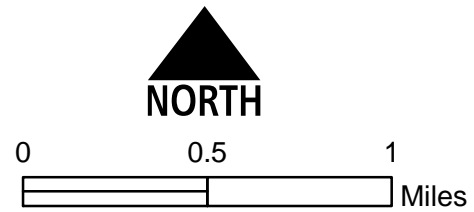
DP-7

DP-30

DP-65

H-43

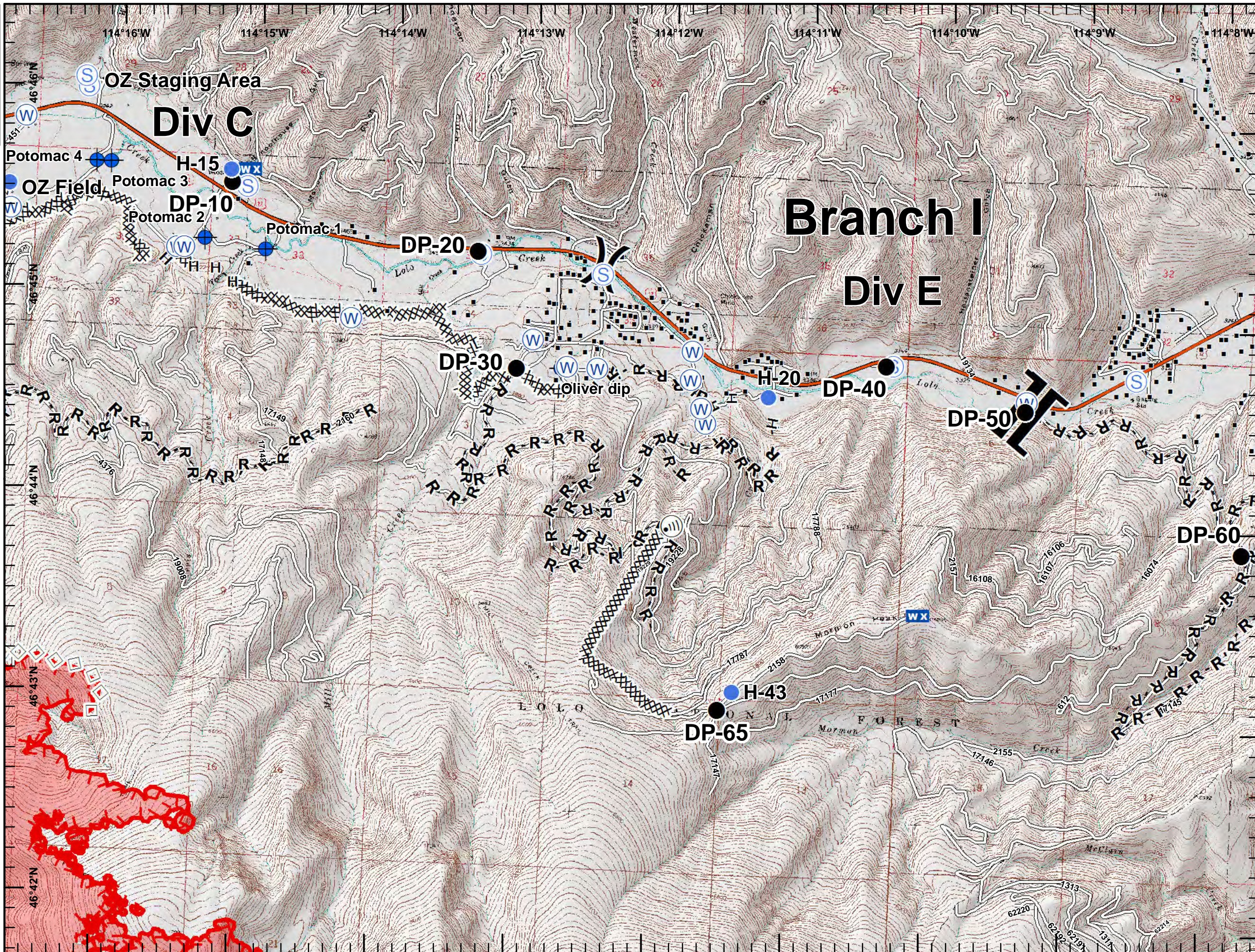
- Dip Site
- Drop Point
- Helispot
- Internet Access
- Mobile Weather Unit
- Retardant/Mud Pit
- Staging Area
- Water Source
- Division Break
- Structures
- Completed Dozer Line
- Completed Hand Line
- Road as Completed Line
- Aerial Retardant Drop
- Uncontrolled Fire Edge
- Interstate and Highways
- Roads
- State Boundary
- Wildfire Daily Fire Perimeter



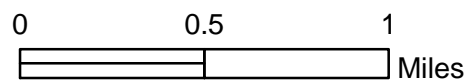


Lolo Peak Fire
 MT-LNF-001288
IAP Map, Page 4
Div E
 8/11/2017

7,644 acres, IR Perimeter
 as of 8/8/2017 @ 2344



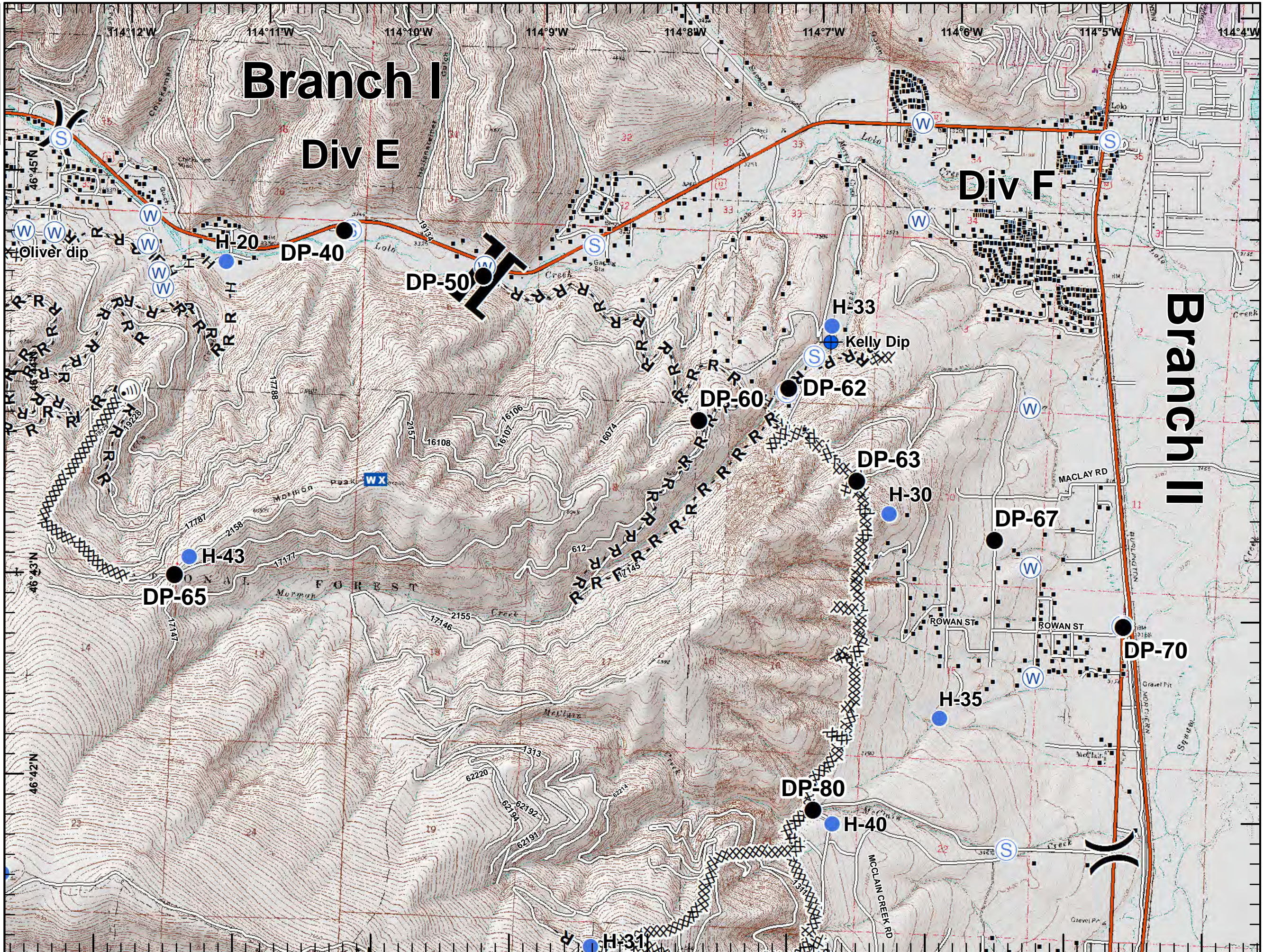
- Dip Site
- Drop Point
- Helispot
- Internet Access
- Mobile Weather Unit
- Retardant/Mud Pit
- Staging Area
- Water Source
- Division Break
- Branch Break
- Structures
- Completed Dozer Line
- Completed Hand Line
- Road as Completed Line
- Aerial Retardant Drop
- Uncontrolled Fire Edge
- Interstate and Highways
- Roads
- State Boundary
- Wildfire Daily Fire Perimeter



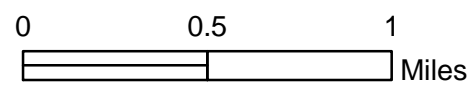


Lolo Peak Fire
 MT-LNF-001288
 IAP Map, Page 5
 Div F
 8/11/2017

7,644 acres, IR Perimeter
 as of 8/8/2017 @ 2344



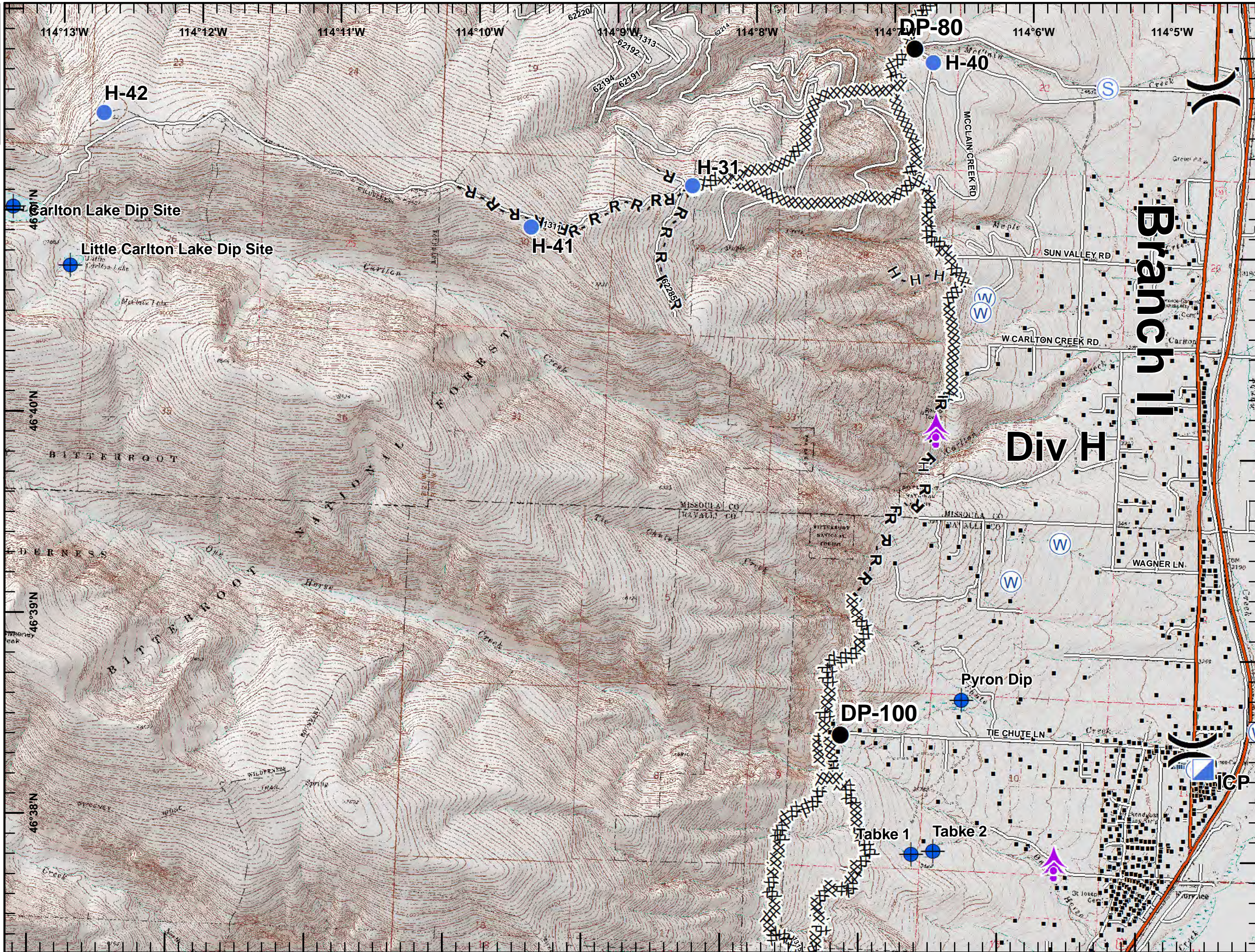
- Dip Site
- Drop Point
- Helispot
- Internet Access
- Mobile Weather Unit
- Staging Area
- Water Source
- Division Break
- Branch Break
- Structures
- Completed Dozer Line
- H - H Completed Hand Line
- R - R Road as Completed Line
- Interstate and Highways
- Roads
- State Boundary





Lolo Peak Fire
 MT-LNF-001288
IAP Map, Page 6
Div H
 8/11/2017

7,644 acres, IR Perimeter
 as of 8/8/2017 @ 2344



Aerial Hazard

Camp

Dip Site

Drop Point

Helispot

ICP

Staging Area

Water Source

Division Break

Structures

Completed Dozer Line

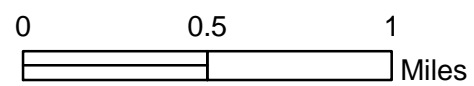
Completed Hand Line

Road as Completed Line

Interstate and Highways

Roads

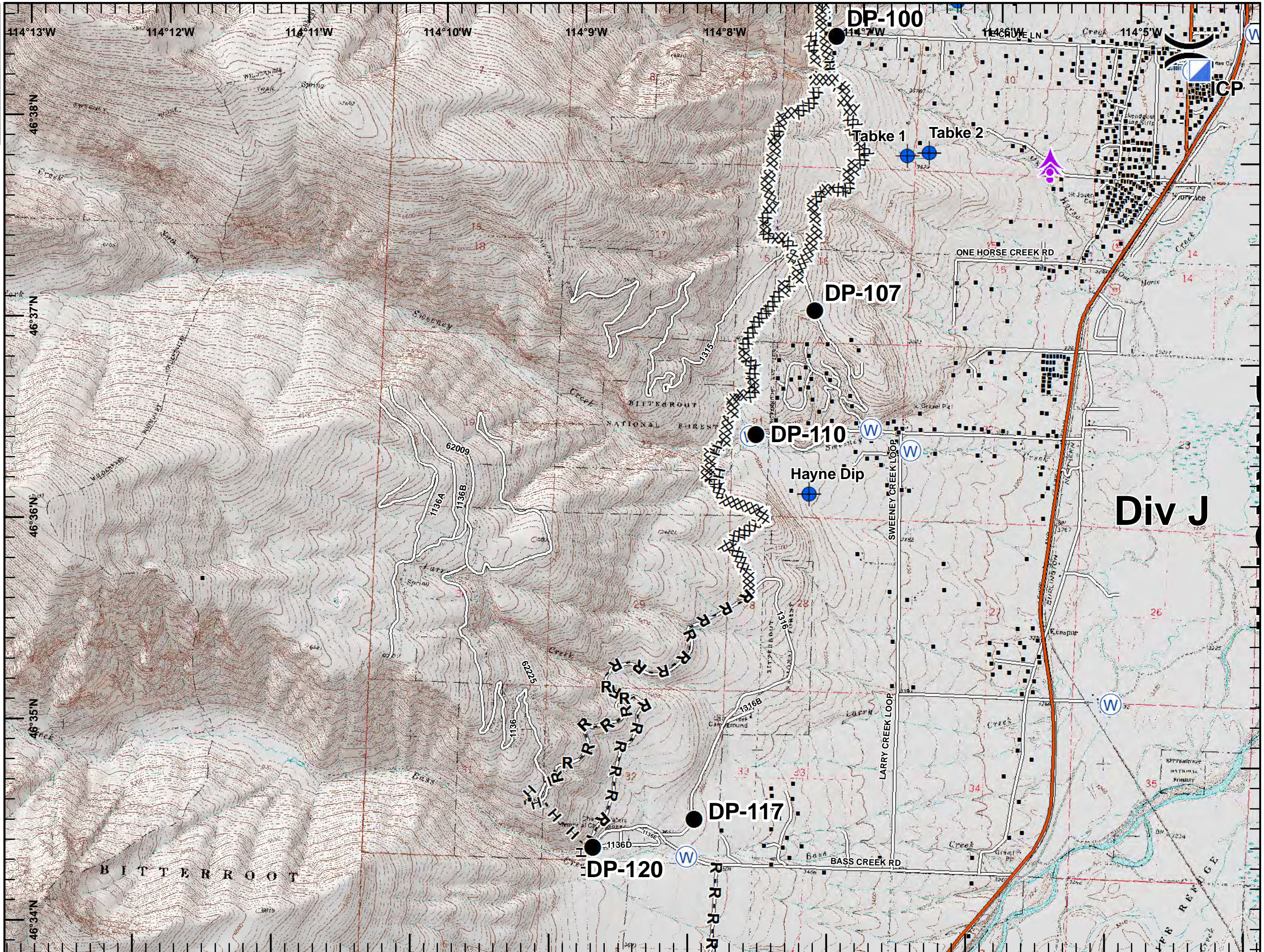
State Boundary



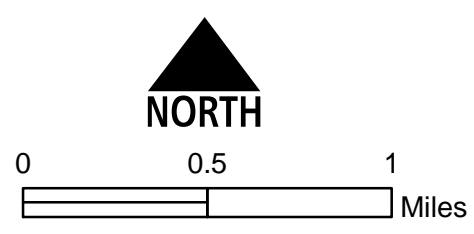


Lolo Peak Fire
 MT-LNF-001288
IAP Map, Page 7
Div J
 8/11/2017

7,644 acres, IR Perimeter
 as of 8/8/2017 @ 2344



- Aerial Hazard
- Camp
- Dip Site
- Drop Point
- ICP
- Water Source
- Division Break
- Structures
- Completed Dozer Line
- Completed Hand Line
- Road as Completed Line
- Interstate and Highways
- Roads
- State Boundary



Div J