




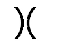




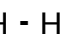
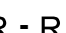


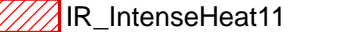
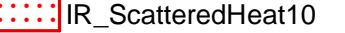

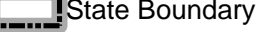

Lolo Peak Fire
 MT-LNF-001288
Contingency Group
 Page 1
 8/12/2017

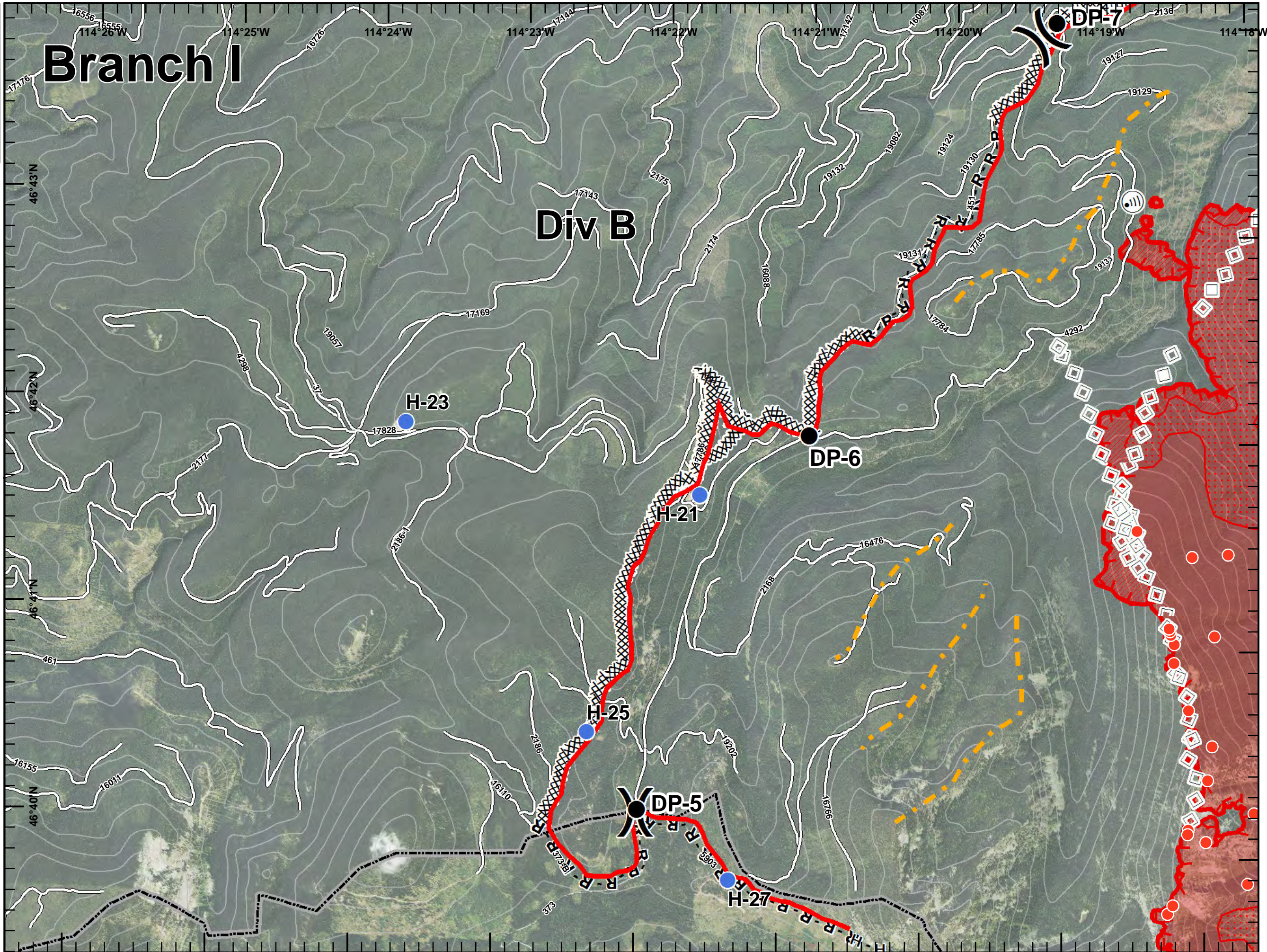
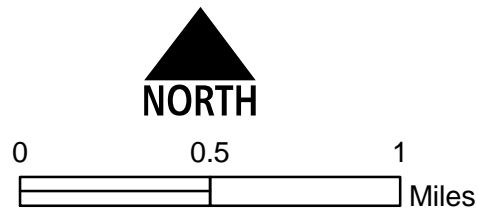


7,903 acres, IR Perimeter
 as of 8/11/2017 @ 0023

Branch I

Div B

- IR_IsolatedHeat9
- Drop Point
- Helispot
-  Internet Access
-  Division Break
-  Phase 2 Aerial Ignitions
-  Phase 1 Hand Ignitions
-  200ft Contours
-  Completed Dozer Line
-  Completed Hand Line
-  Road as Completed Line
-  Aerial Retardant Drop
-  Uncontrolled Fire Edge
-  IR_IntenseHeat11
-  IR_ScatteredHeat10
-  Roads
-  State Boundary
-  Wildfire Daily Fire Perimeter

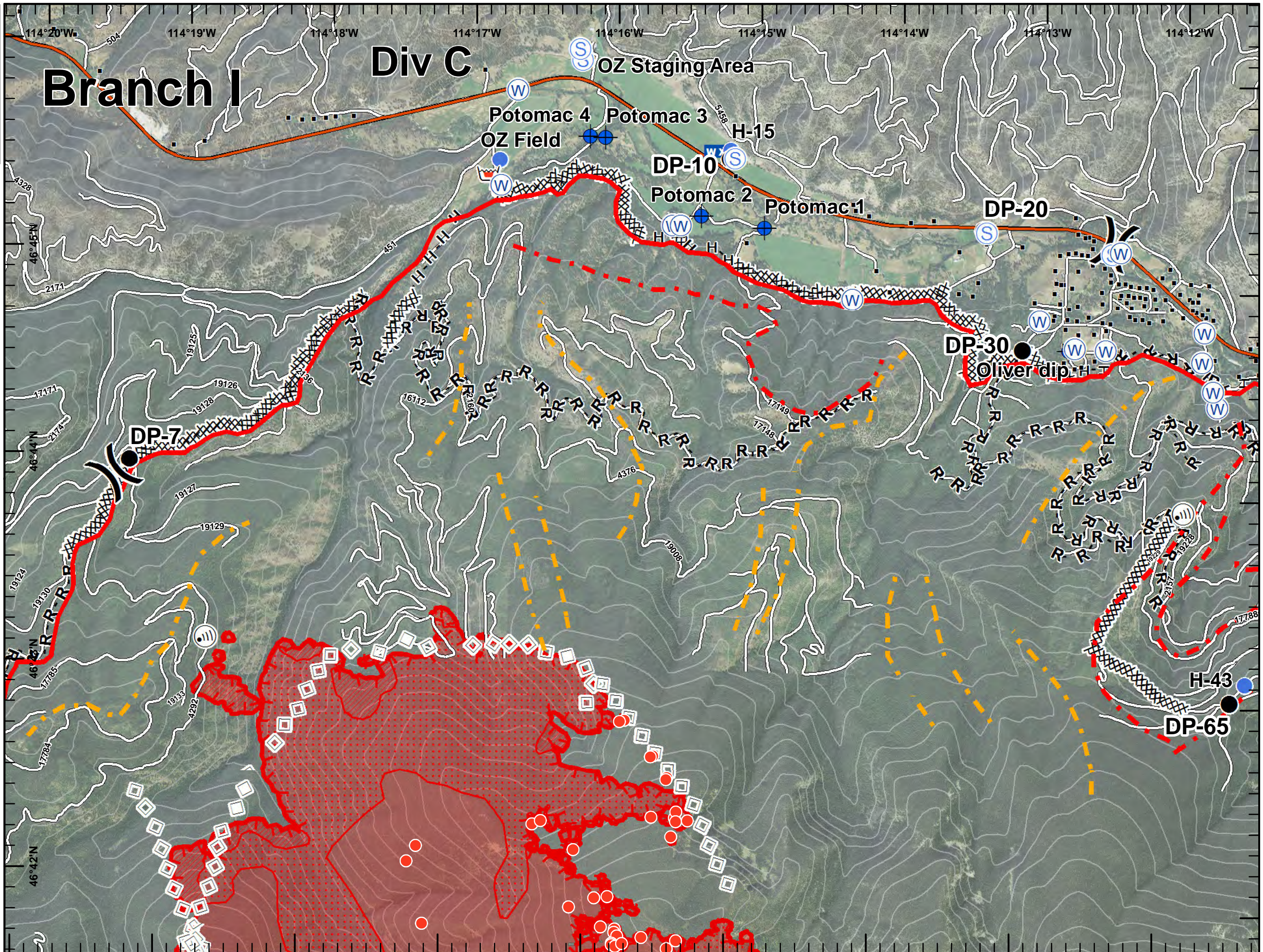




Lolo Peak Fire
 MT-LNF-001288
Contingency Group
 Page 2
 8/12/2017



7,903 acres, IR Perimeter
 as of 8/11/2017 @ 0023



- IR_IsolatedHeat9
- Dip Site
- Drop Point
- Helispot
- Internet Access
- Mobile Weather Unit
- Retardant/Mud Pit
- Staging Area
- Water Source
- Division Break
- Structures
- Phase 1 Aerial Ignitions
- Phase 2 Aerial Ignitions
- Phase 1 Hand Ignitions
- 200ft Contours
- Completed Dozer Line
- H - H Completed Hand Line
- R - R Road as Completed Line
- Aerial Retardant Drop
- Uncontrolled Fire Edge
- Interstate and Highways
- IR_IntenseHeat11
- IR_ScatteredHeat10
- Roads
- Wildfire Daily Fire Perimeter



Lolo Peak Fire

MT-LNF-001288

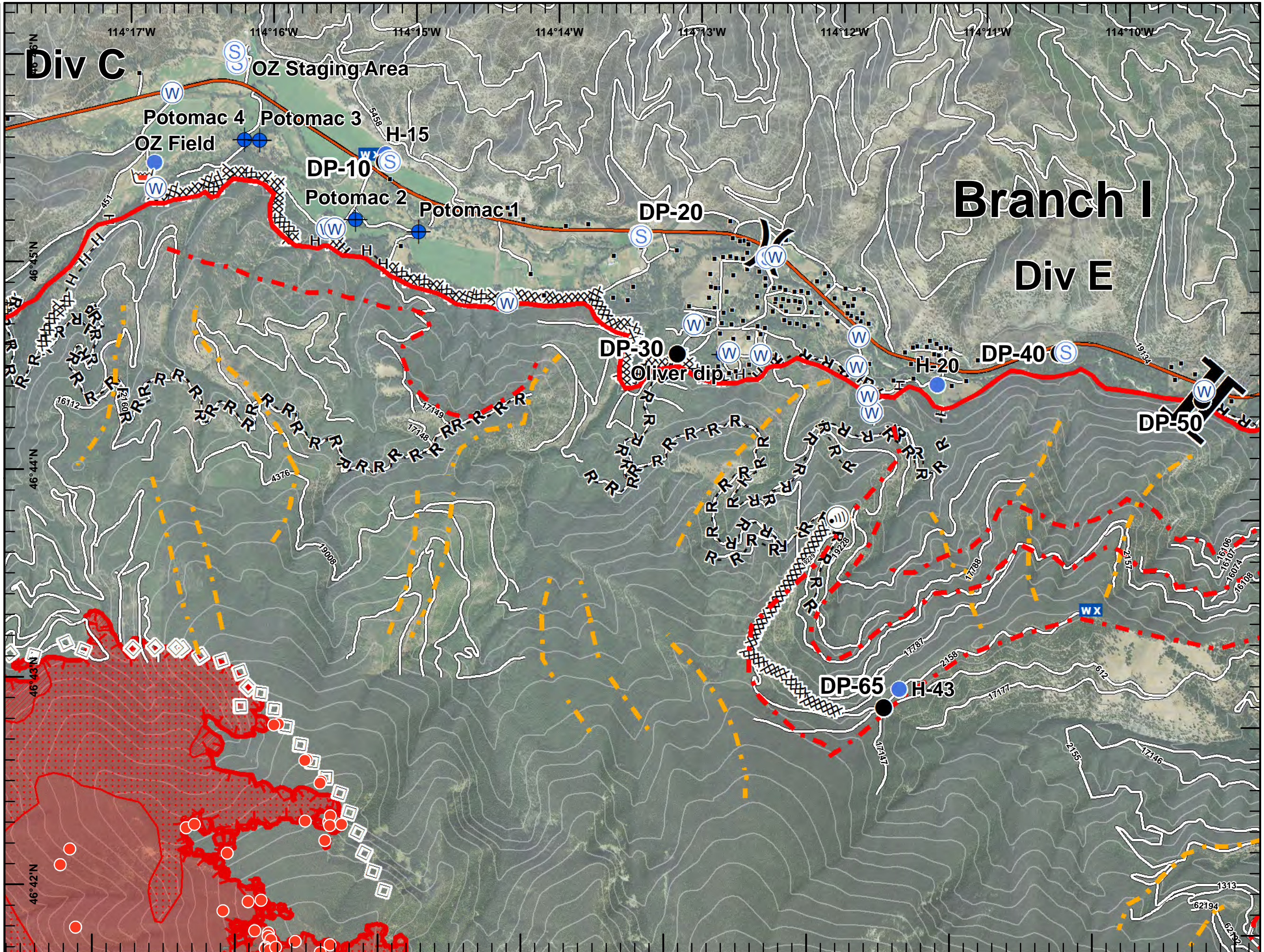
Contingency Group

Page 3

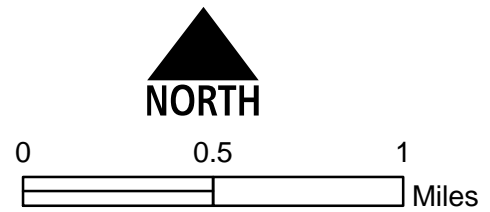
8/12/2017



7,903 acres, IR Perimeter as of 8/11/2017 @ 0023

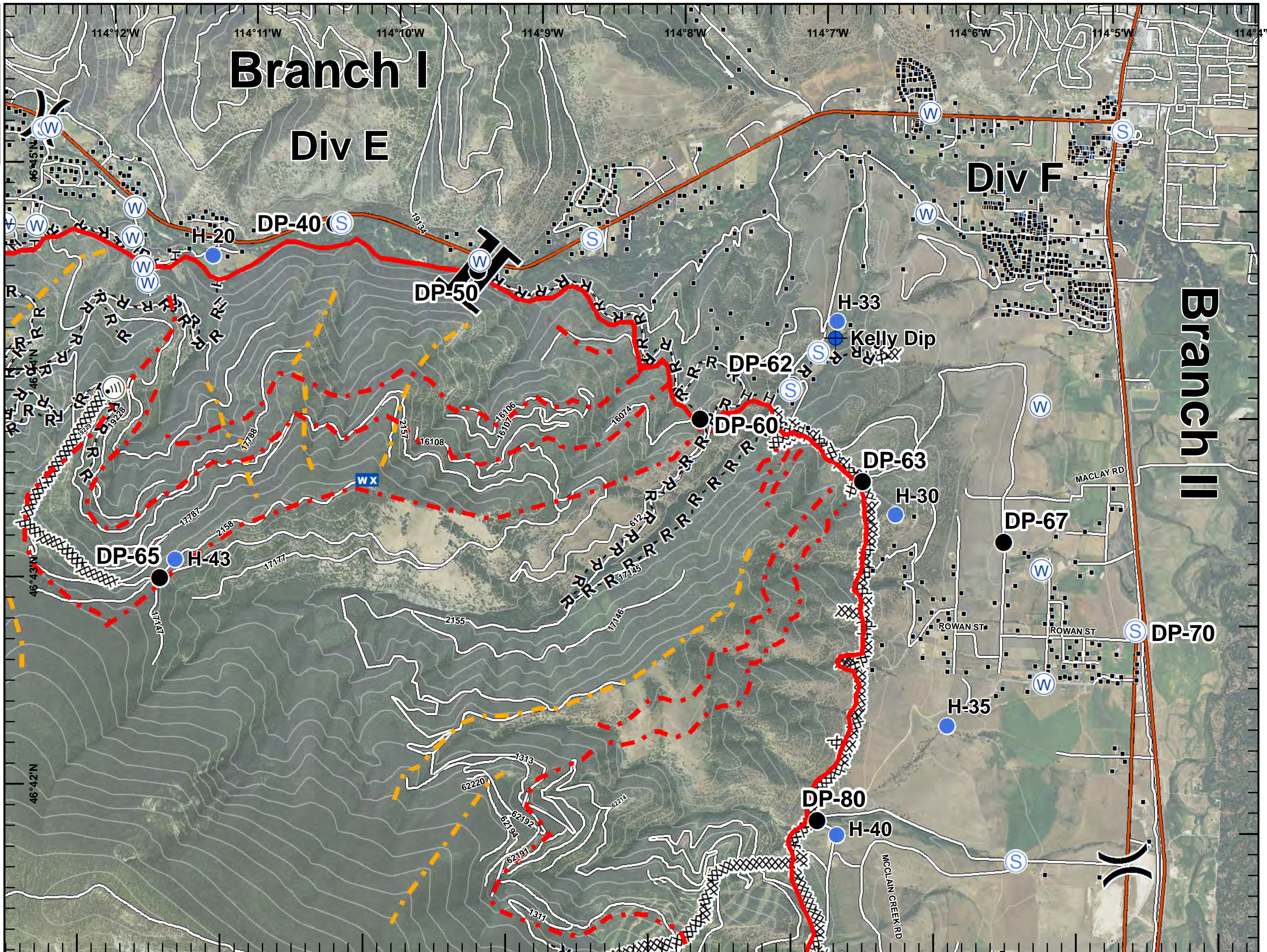


- IR_IsolatedHeat9
- Dip Site
- Drop Point
- Helispot
- Internet Access
- Mobile Weather Unit
- Retardant/Mud Pit
- Staging Area
- Water Source
- Division Break
- Branch Break
- Structures
- Phase 1 Aerial Ignitions
- Phase 2 Aerial Ignitions
- Phase 1 Hand Ignitions
- 200ft Contours
- Completed Dozer Line
- H - H Completed Hand Line
- R - R Road as Completed Line
- Aerial Retardant Drop
- Uncontrolled Fire Edge
- Interstate and Highways
- IR_IntenseHeat11
- IR_ScatteredHeat10
- Roads
- Wildfire Daily Fire Perimeter

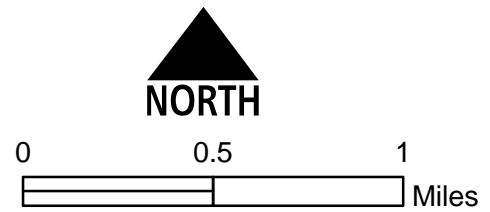


Lolo Peak Fire
 MT-LNF-001288
 Contingency Group
 Page 4
 8/12/2017

7,903 acres, IR Perimeter
 as of 8/11/2017 @ 0023





- Dip Site
- Drop Point
- Helispot
- Internet Access
- Mobile Weather Unit
- Staging Area
- Water Source
- Division Break
- Branch Break
- Structures
- Phase 1 Aerial Ignitions
- Phase 2 Aerial Ignitions
- Phase 1 Hand Ignitions
- 200ft Contours
- Completed Dozer Line
- H - H Completed Hand Line
- R - R Road as Completed Line
- Interstate and Highways
- Roads

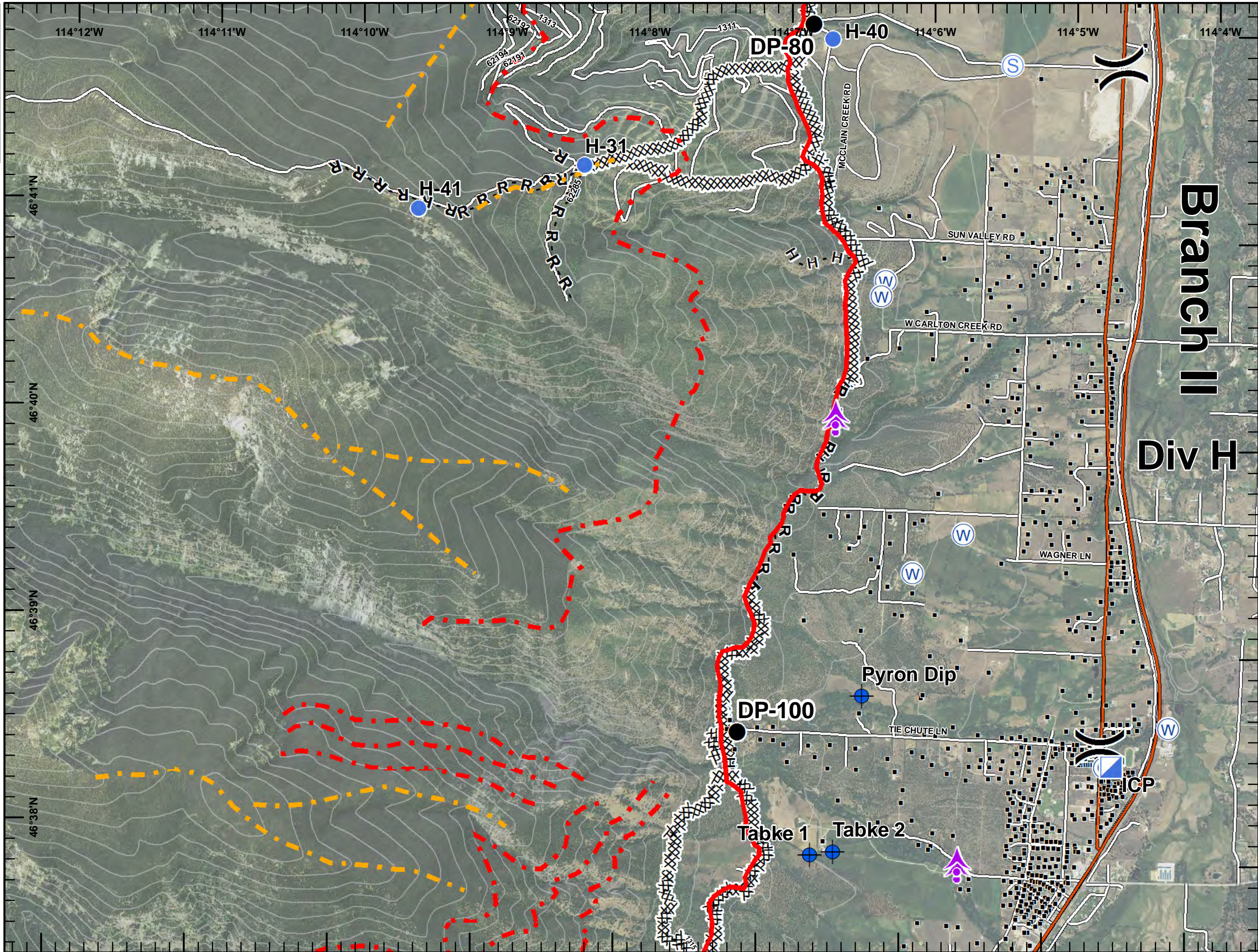




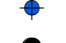




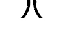






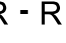

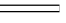




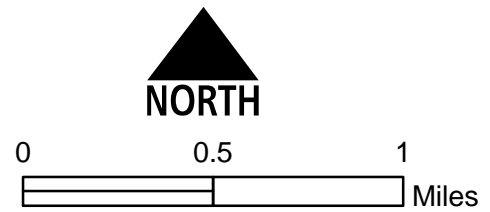
Lolo Peak Fire
 MT-LNF-001288
Contingency Group
 Page 5
 8/12/2017



7,903 acres, IR Perimeter
 as of 8/11/2017 @ 0023


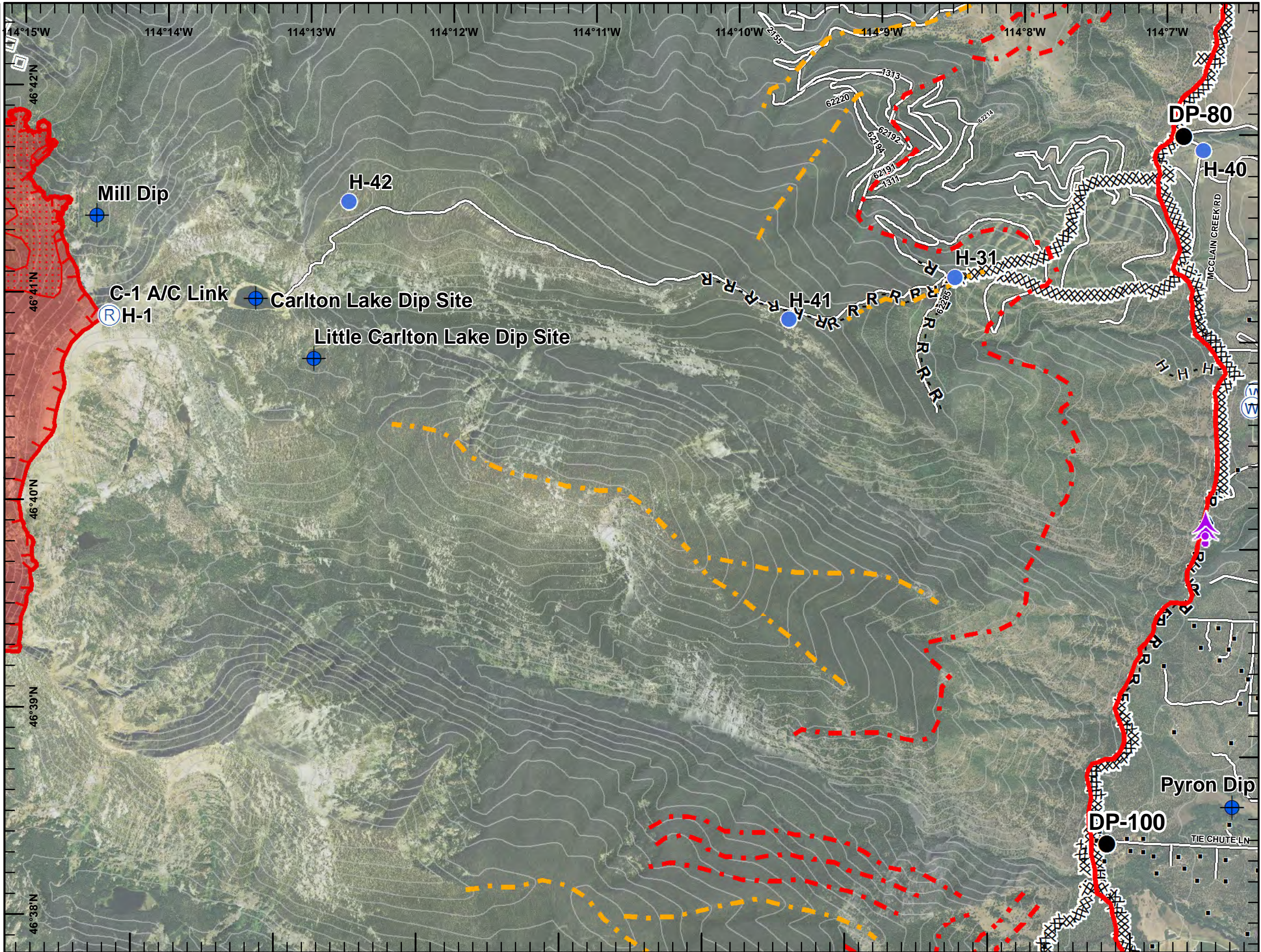














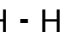

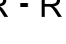





-  Aerial Hazard
-  Camp
-  Dip Site
-  Drop Point
-  Helispot
-  ICP
-  Staging Area
-  Water Source
-  Division Break
-  Structures
-  Phase 1 Aerial Ignitions
-  Phase 2 Aerial Ignitions
-  Phase 1 Hand Ignitions
-  200ft Contours
-  Completed Dozer Line
-  H - H Completed Hand Line
-  R - R Road as Completed Line
-  Interstate and Highways
-  Roads



Lolo Peak Fire
 MT-LNF-001288
Contingency Group
 Page 6
 8/12/2017

7,903 acres, IR Perimeter
 as of 8/11/2017 @ 0023

-  Aerial Hazard
-  Dip Site
-  Drop Point
-  Helispot
-  Repeater
-  Water Source
-  Structures
-  Phase 1 Aerial Ignitions
-  Phase 2 Aerial Ignitions
-  Phase 1 Hand Ignitions
-  200ft Contours
-  Completed Dozer Line
-  H - H Completed Hand Line
-  R - R Road as Completed Line
-  Aerial Retardant Drop
-  Uncontrolled Fire Edge
-  IR_IntenseHeat11
-  IR_ScatteredHeat10
-  Roads
-  Wildfire Daily Fire Perimeter

