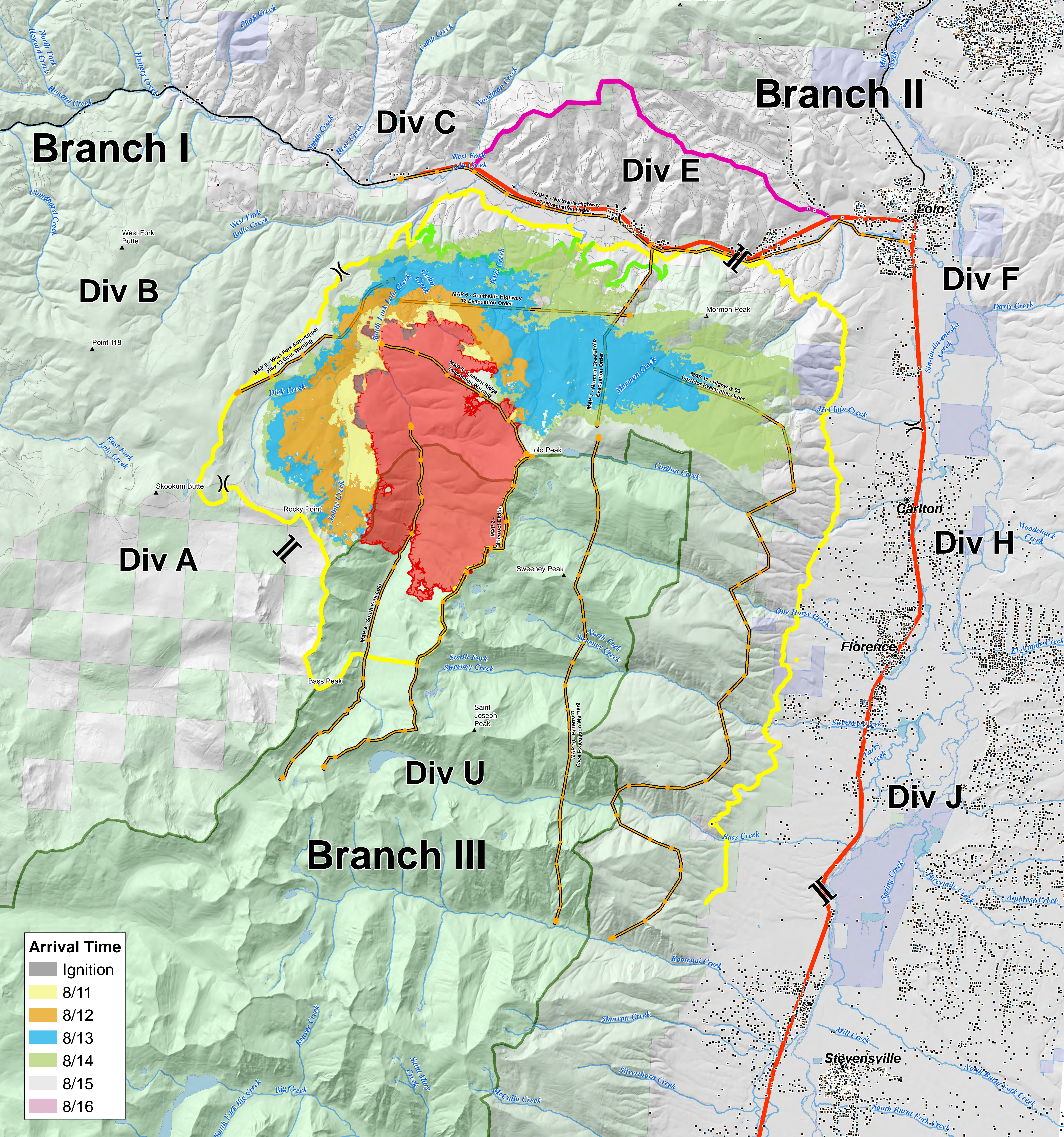




**Lolo Peak Fire**  
 MT-LNF-001288  
**Near-term Fire Behavior**  
**Wind Event (4-day)**  
**8/11/2017**  
 7,903 acres, IR Perimeter  
 as of 8/11/2017 @ 0023



**Arrival Time**

Grey	Ignition
Yellow	8/11
Orange	8/12
Blue	8/13
Light Green	8/14
White	8/15
Pink	8/16

)) Division Break  
 || Branch Break

--- Uncontrolled Fire Edge  
 Wildfire Daily Fire Perimeter

**Contingency Type**  
 Yellow Primary Line  
 Green Alternate Line  
 Orange Contingency Line  
 Pink Emergency Line  
 Brown Management Action Points

**Ownership**  
 Tan Other Federal  
 Light Blue State  
 Green US Forest Service  
 Dark Green Wilderness

