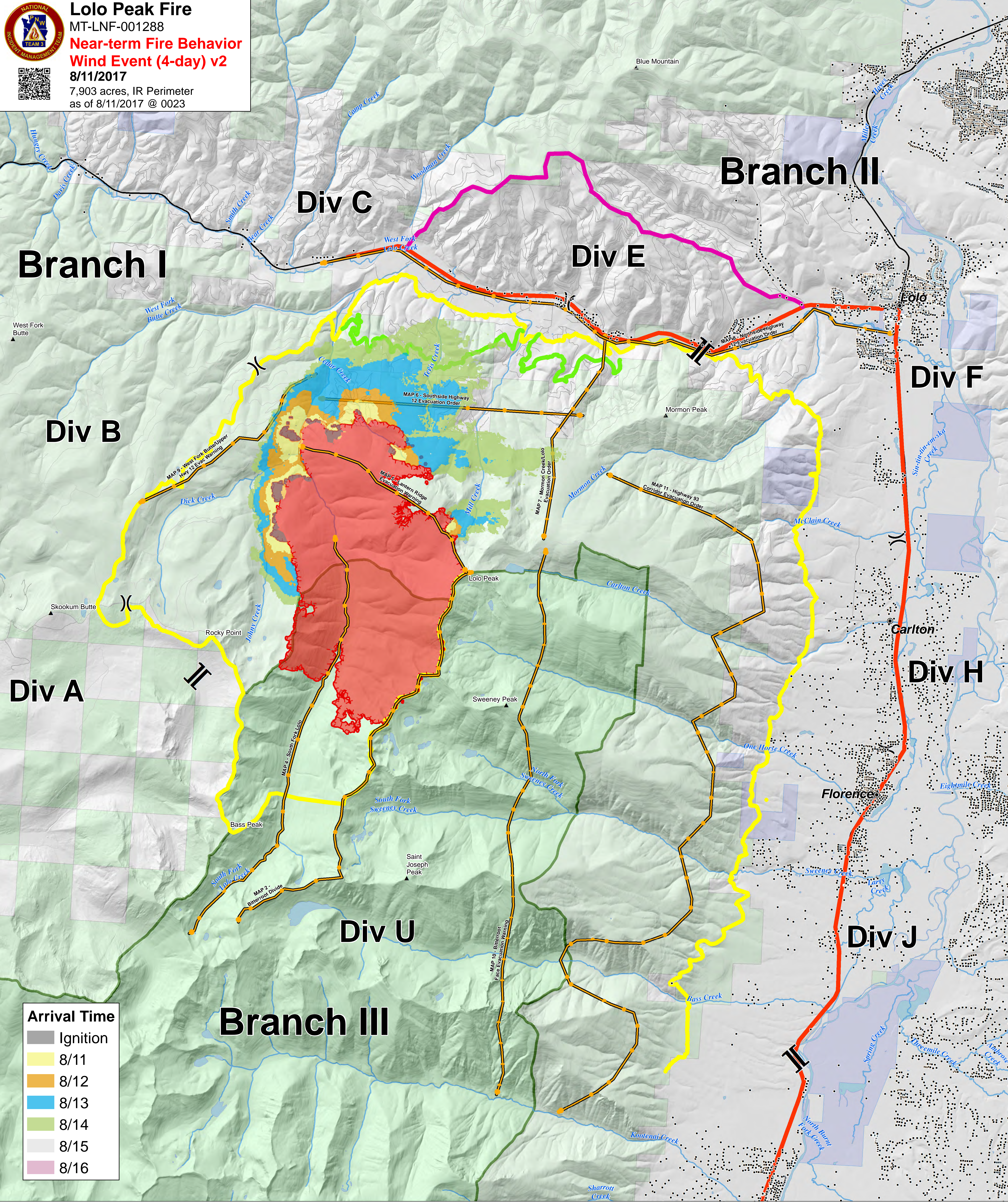




Lolo Peak Fire
 MT-LNF-001288
Near-term Fire Behavior
Wind Event (4-day) v2
8/11/2017
 7,903 acres, IR Perimeter
 as of 8/11/2017 @ 0023



Arrival Time	
Grey	Ignition
Yellow	8/11
Orange	8/12
Blue	8/13
Light Green	8/14
Light Grey	8/15
Pink	8/16

)) Division Break
 || Branch Break

--- Uncontrolled Fire Edge
 Wildfire Daily Fire Perimeter

Contingency Type

Yellow Primary Line
 Green Alternate Line
 Orange Contingency Line
 Pink Emergency Line
 Orange-dot Management Action Points

Ownership

Light Brown Other Federal
 Light Blue State
 Light Green US Forest Service
 Dark Green Wilderness

